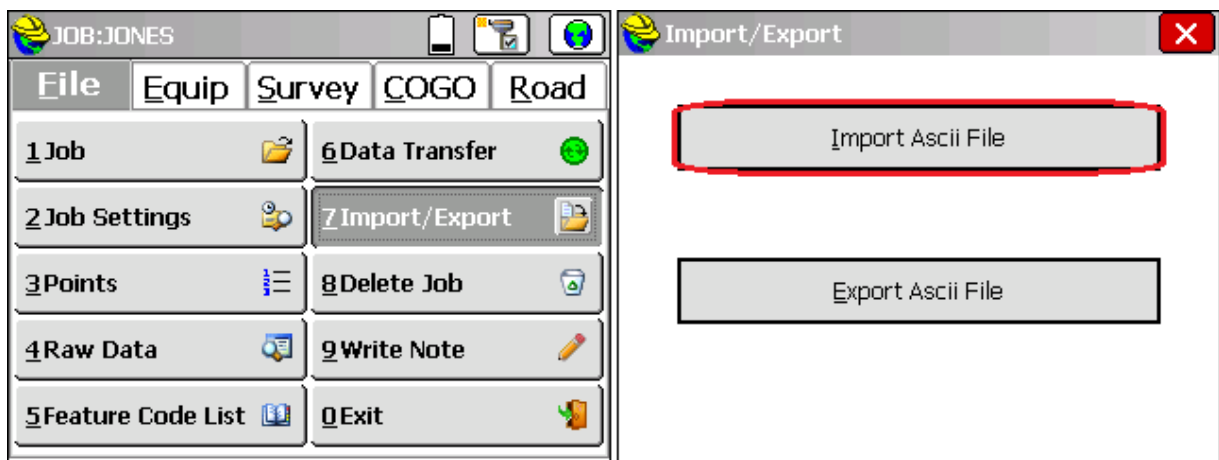
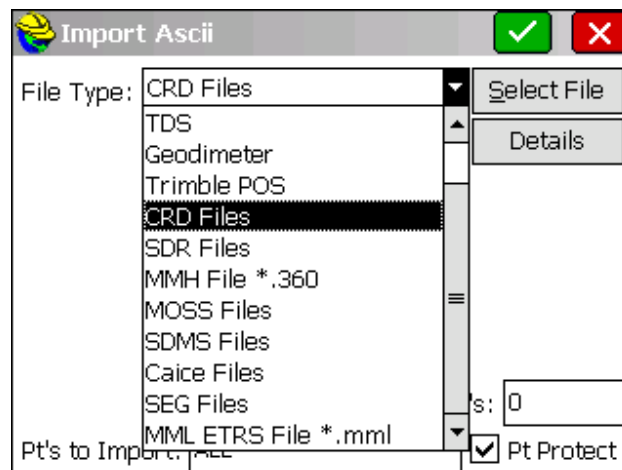


IMPORT CRD FROM FLASH DRIVE TO SURVCE

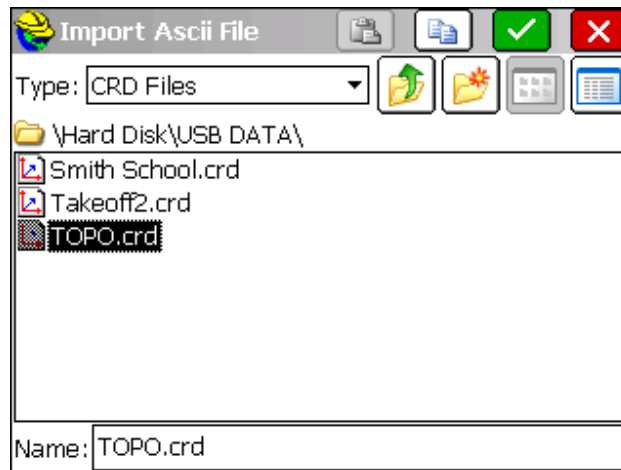
1. Create a folder in your USB Flash Memory drive such as USB Data while its connected to your computer
2. Insert the USB thumb drive into the Surveyor data collector.
3. Tap File / Import Export / Import ASCII File



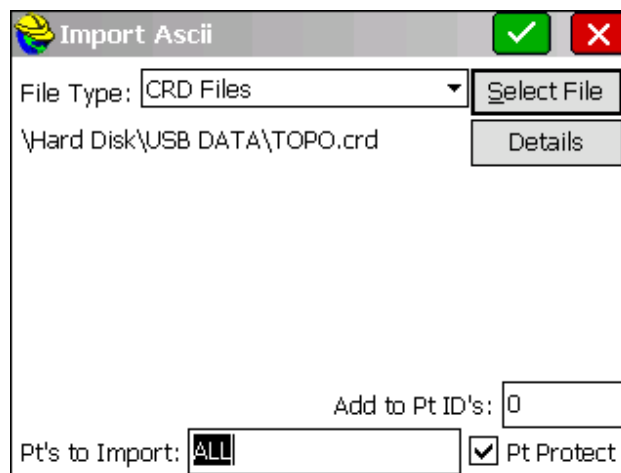
4. Change your File Type to CRD. Then, Tap "Select File" in the top left.



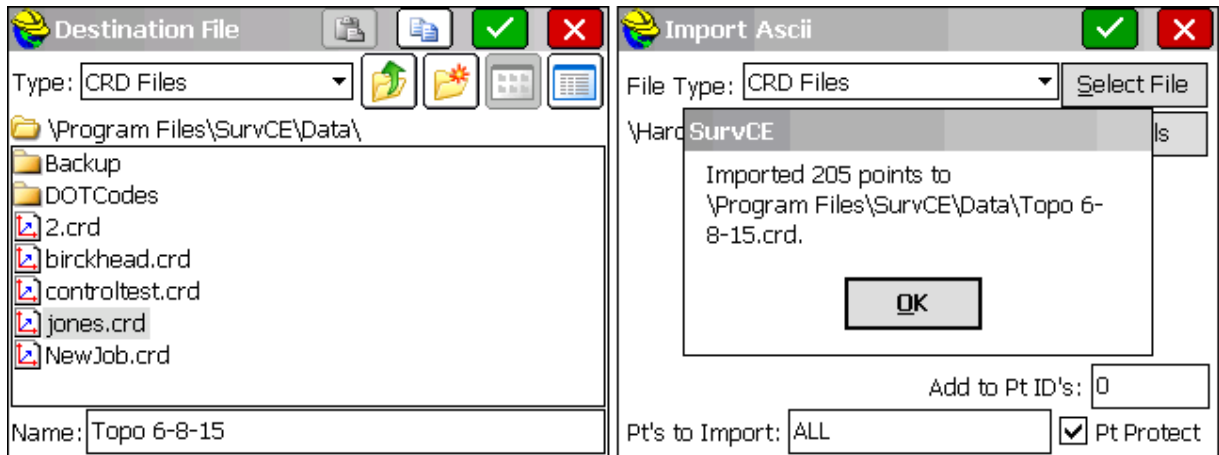
5. Tap the icon of the Folder with an Up Arrow, until you see Hard Disk listed in the window below. Double-Tap Hard Disk. Then, double-tap on the USB Data folder.
6. Tap on the CRD file that you wish to import. Then, tap the Green Check.



7. Confirm that the correct number of points to import is shown at the bottom of the screen; then you may click the green checkmark.



8. Name the Job file, into which the points will be imported. Then, tap the green checkmark.



9. You may now go to the File tab and select Job, to choose your new imported job data.

