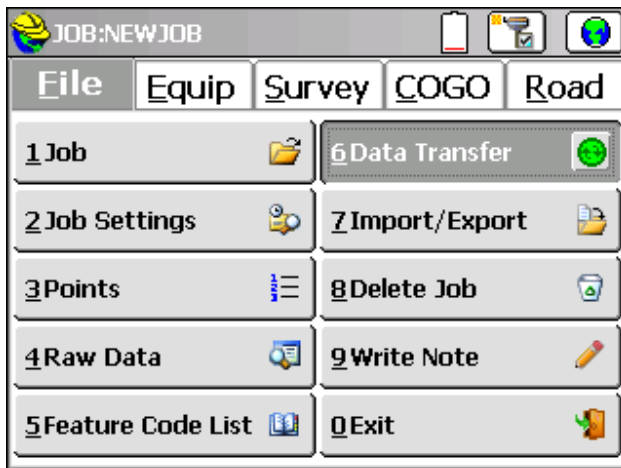
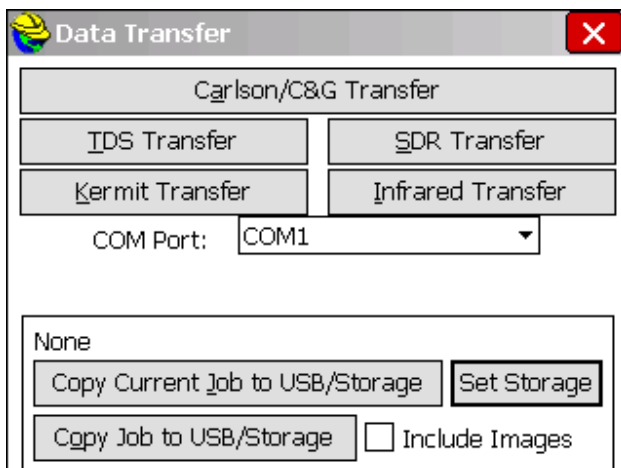


Below is the steps you can use with a USB flash memory stick to transfer data from a SurvCE to a desktop or laptop computer:

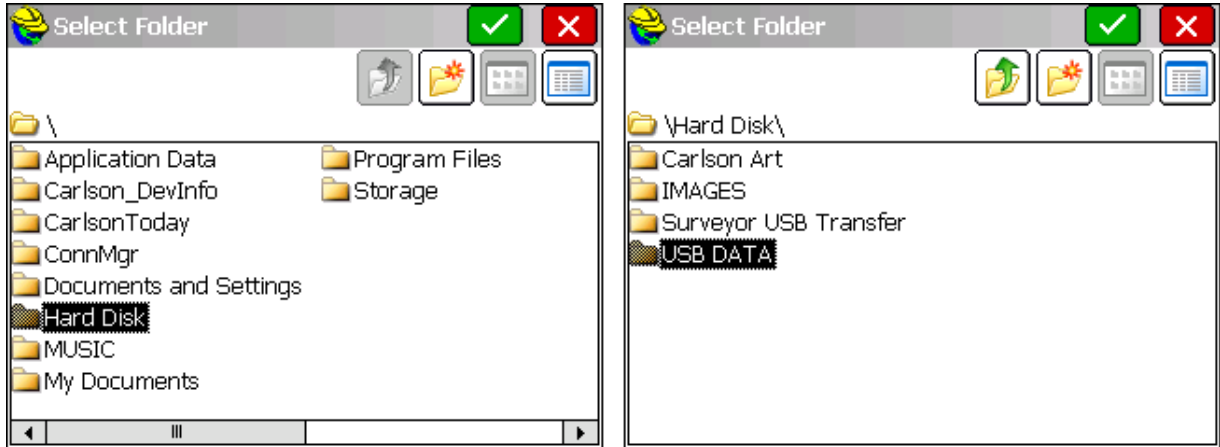
1. Create a folder in your USB Flash Memory drive such as “USB Data” while its connected to your computer
2. Insert the USB thumbdrive into the Surveyor data collector
3. Open the Job that you are working on in SurvCE
4. Tap File / Data Transfer



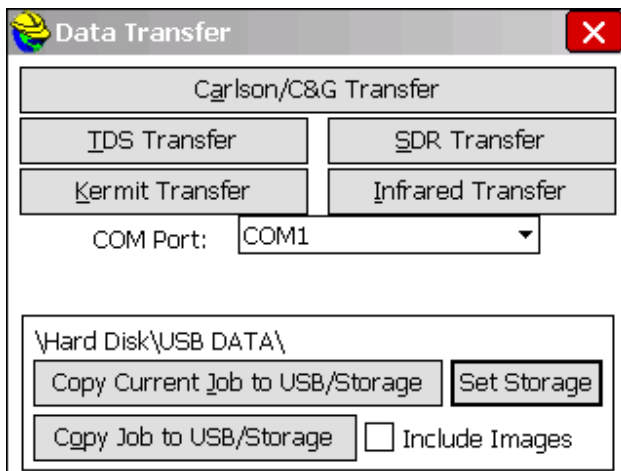
5. Tap “Set Folder”



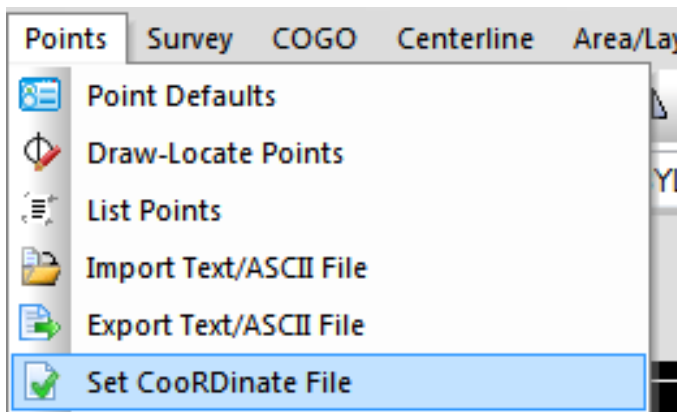
6. Double-tap on Hard Disk. Then, double tap on the “USB Data” folder you had created.



7. Tap the Green Check to set this as your destination folder
8. Now you can tap “Copy Current job to Folder” and it will transfer all the necessary CRD / RW5 and all other job files to the USB thumb drive



9. Plug in your USB flash drive to your laptop or desktop computer
10. Copy the files from the “USB Data” folder on the flash memory drive into a folder on your computer.
11. Launch your Carlson Software program.
12. Go to the Points drop-down and select Set Coordinate File.



13. Then, click on the EXISTING tab, and browse to the CRD we had transferred. Then, click Open.

