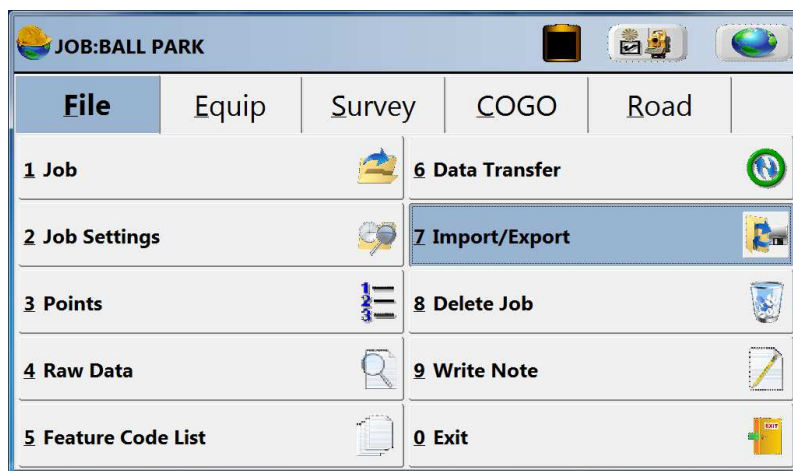
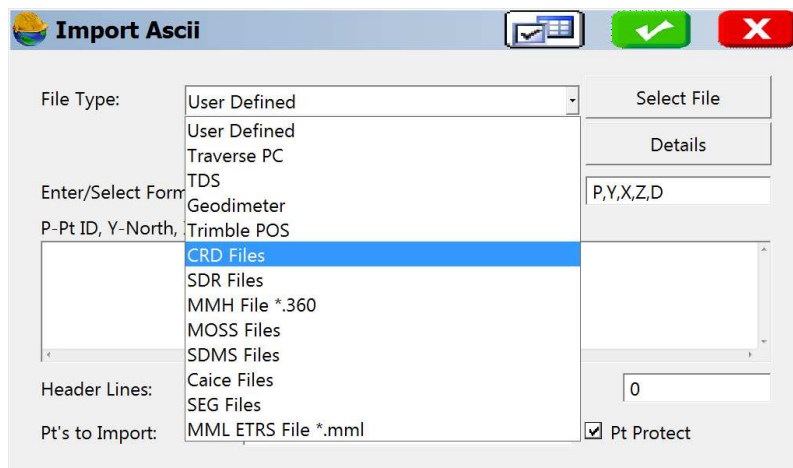


IMPORT CRD FROM FLASH DRIVE TO SURVPC

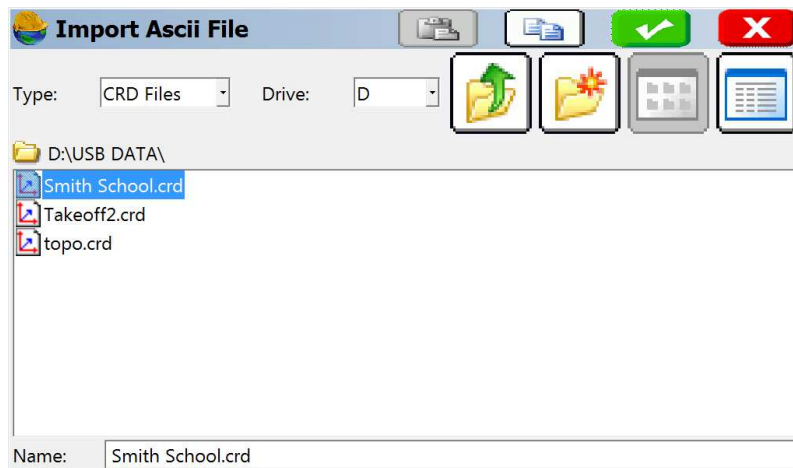
1. Create a folder in your USB Flash Memory drive such as USB Data while its connected to your computer
2. Insert the USB thumb drive into the Supervisor tablet.
3. Tap File / Import Export / Import ASCII File



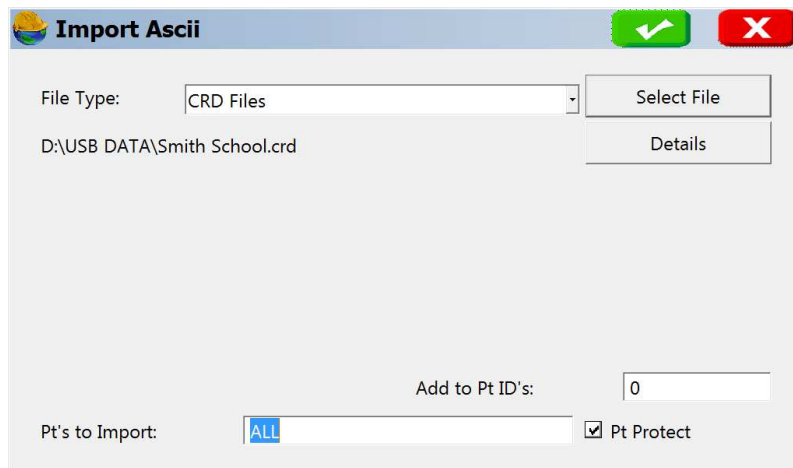
4. Change your File Type to CRD. Then, Tap "Select File" in the top left.



5. Tap the "Drive" drop-down to select the D drive. Double-Tap on the USB Data folder.
6. Tap on the CRD file that you wish to import. Then, tap the Green Check.



7. Confirm that the correct number of points to import is shown at the bottom of the screen; then you may click the green checkmark.



8. Name the Job file, into which the points will be imported. Then, tap the green checkmark.

