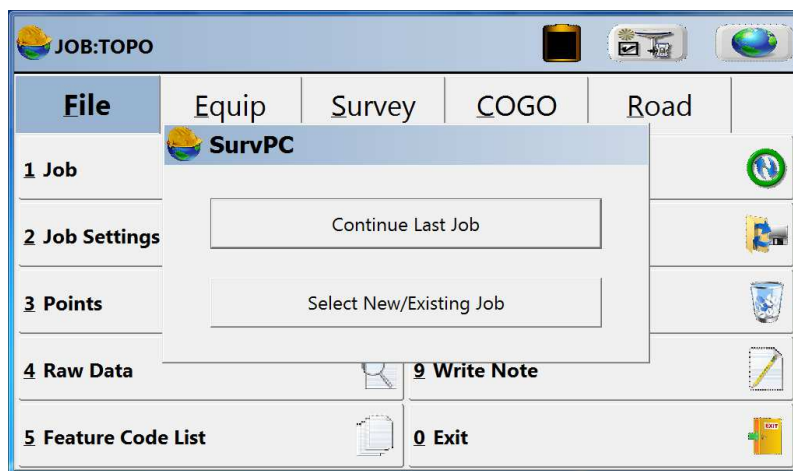
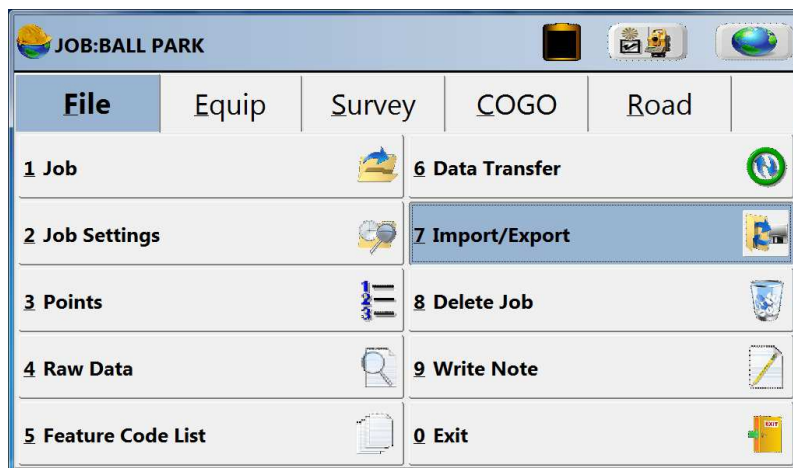


IMPORT TEXT ASCII TO SURVPC

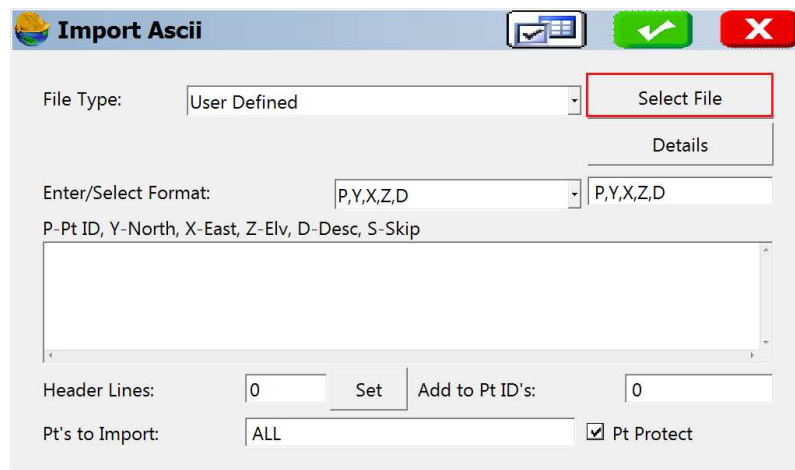
1. Create a folder in your USB Flash Memory drive such as USB Data while its connected to your computer
2. Insert the USB thumb drive into the Supervisor tablet.
3. Open the Job or start a new Job where you want the points loaded into



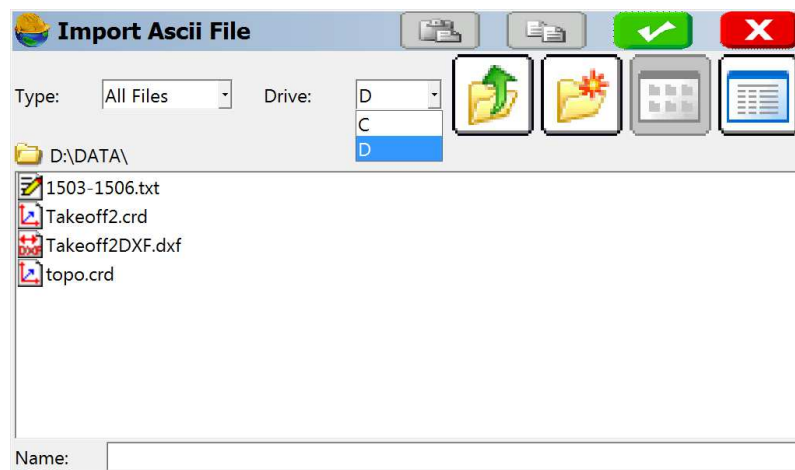
4. Then tap File / Import Export / Import ASCII File



5. Tap "Select File" in the top left

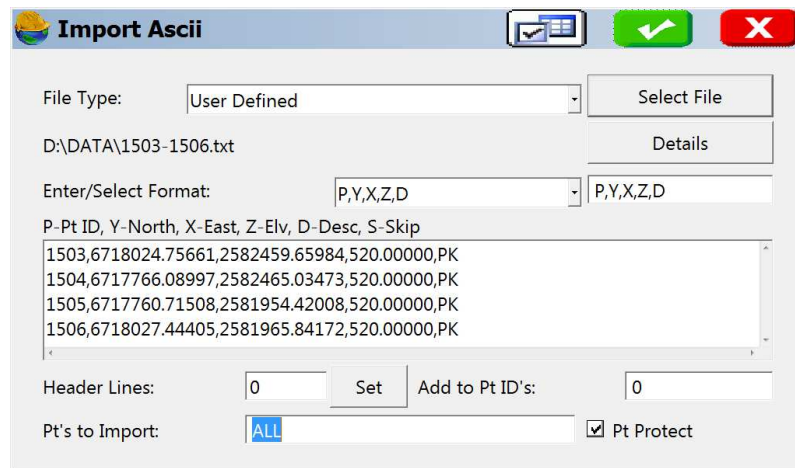


6. Tap the "Drive" drop-down to select the D drive.

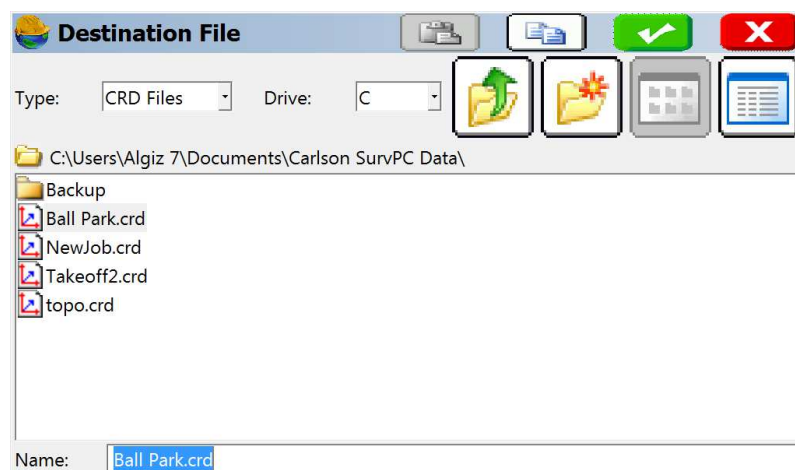


7. Tap on the Text file that you wish to import. Then, tap the Green Check.

8. In the center of the Import ASCII screen, there is a preview window. This window shows a brief preview of the data which you are about to import. Please note whether the data is separated by commas or spaces. This is important, as you will need to tell the program exactly which format it will be reading to import the points.



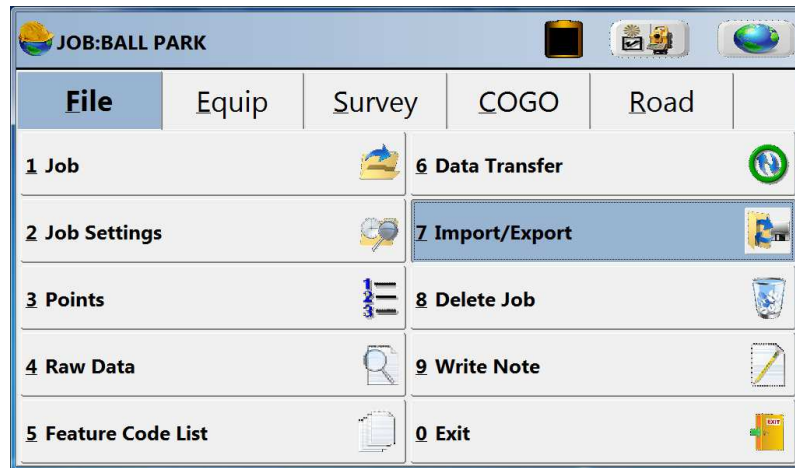
9. Once you are satisfied that the “file format” matches what is shown in the preview window, and you have the correct number of points to import shown at the bottom of the screen; you may click the green checkmark.
10. You now be prompted to select the .crd file, into which the points will be imported.



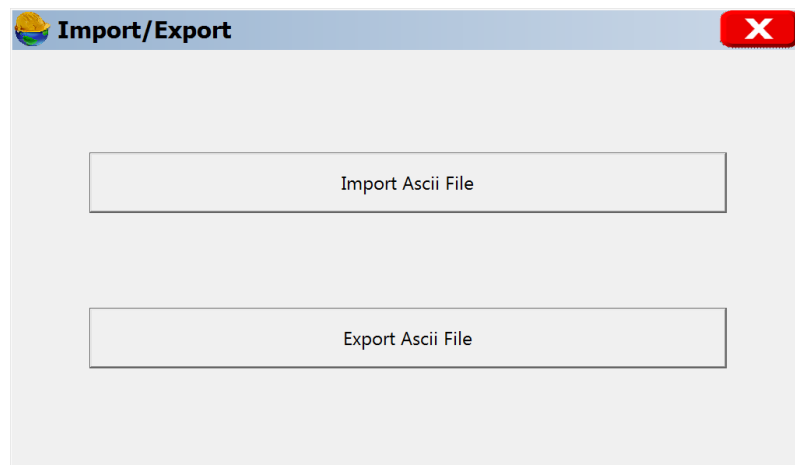
11. Select your CRD file, and then click to green checkmark to import the text file.

EXPORT TEXT ASCII TO SURVPC

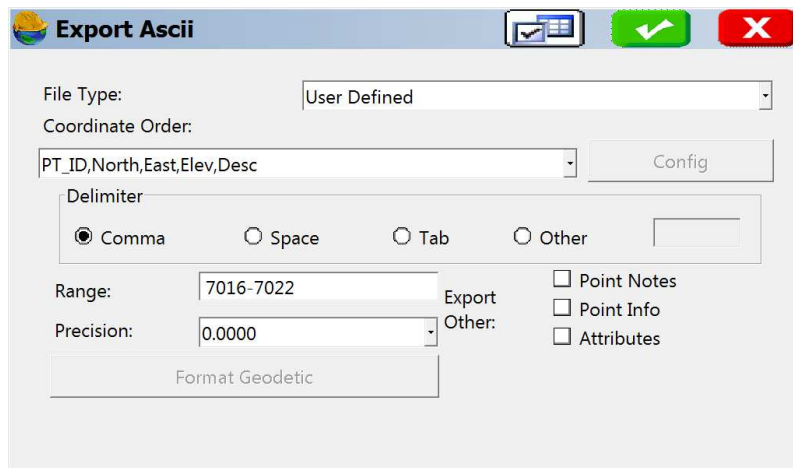
1. From the File menu, select Import/Export.



2. Select Export ASCII File. This command converts point data from the CRD file into a Text format.



3. Leave the File Type set to User Defined. Then, enter the range of points that you wish to Export. If you would like to export the entire coordinate file, you may type ALL. Then, click on the green checkmark.



4. Tap the "Drive" drop-down to select the D drive. Double-Tap on the Data folder. Then, click the green checkmark to complete the process.

