

# CST Berger Quick Start

## CST 202/CST 205

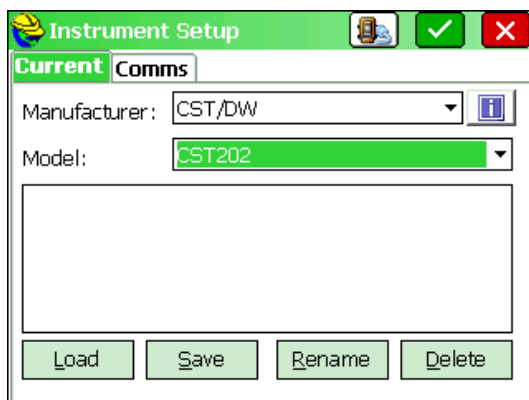
*Note: The CST Berger RS232 instrument cable is NOT a standard Topcon cable. The cable will fit, but the wiring is different. Contact CST to purchase a proper cable for third party communication.*

### Total Station Setup

- 1) Power on total station and turn scope as directed on the screen, to get to the main measurement screen.
- 2) Press the ESC key once to get to the info screen
- 3) Press F4, for CNFG
- 4) Press 3->Key Function, then 1->Define
- 5) Scroll to the second row, fourth column using the left/right arrow keys, then use the up/down arrow keys to redefine that button to COMM
- 6) Press ENTER to save changes, and then escape twice to get back to the main menu.
- 7) Press F1 for Meas. Press PAGE to get to the second tab of menu items.
- 8) Press the newly defined key, F4 for COMM. The total station is now in the correct communication mode for third party software.

### SurvCE Setup

- 1) Launch SurvCE. Go to Equip->Total Station
- 2) Choose Manufacturer: CST/DW, Model: CST202 (or CST205)



- 3) On The Comms tab, choose the correct com port for your data collector. All other communications are hard coded for this total station.
- 4) Press the connect icon (left of the green check) to confirm communication, and then the green check to configure the instrument.

*Note: There is a baud rate setting on the total station, but this is not used in COMM mode. COMM mode always uses baud rate 1200, 8, N, 1.*