
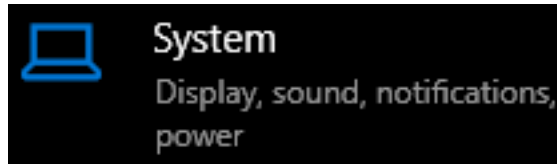
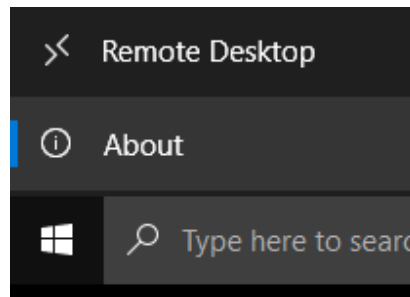


If your workstation is having difficulty accessing network licenses from your network server, you may “point the program” to the license manager by setting an environment variable, on the workstation.

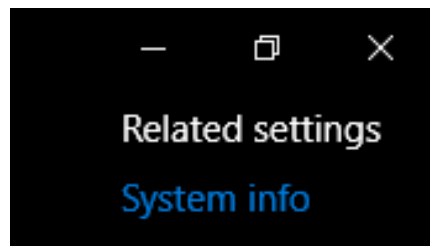
1. Left Click on the Windows icon, found on the bottom, left-hand corner of your computer screen.
Then, Click on the Settings icon. 
2. Select System from the Windows Settings menu.



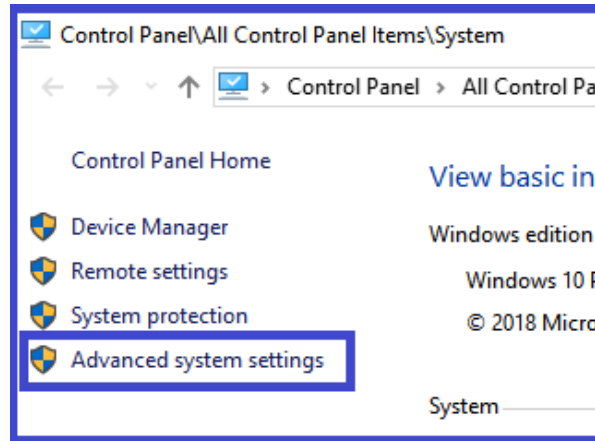
3. Select About from the Settings menu, on the left-hand side of the screen.



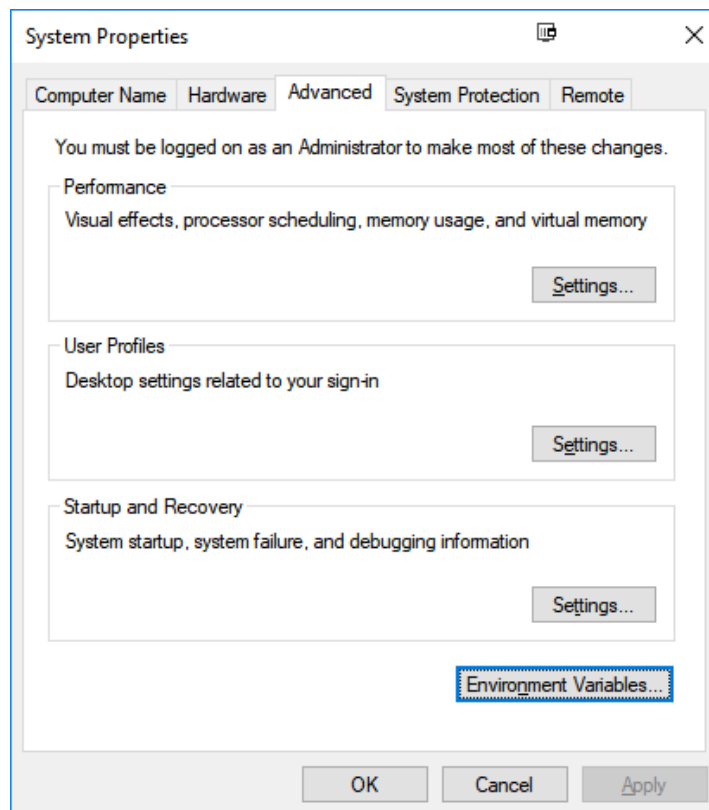
4. Click on System info, under Related settings, on the top-right corner of the computer screen.



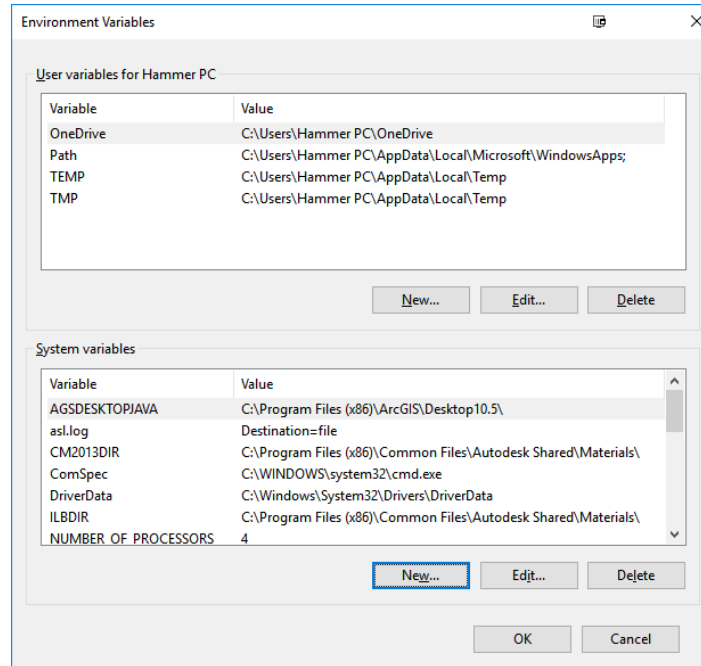
5. Click on Advanced system settings, on the top left-hand side of the screen.



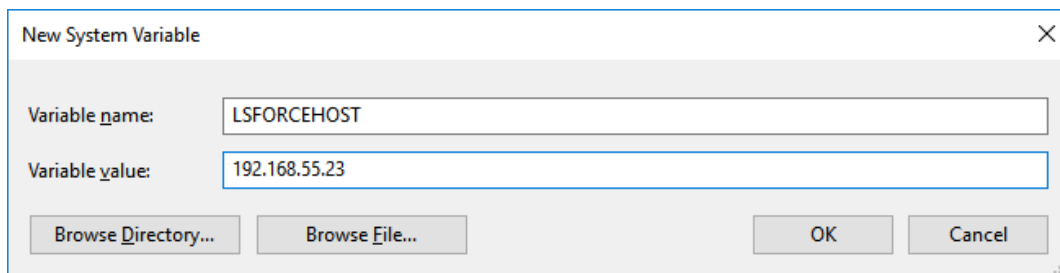
6. Click on the Environment Variables button, on the bottom, right-hand corner of the Advanced tab, in System Properties.



- The Environment Variables screen is divided into 2 sections; with User Variables at the top and System Variables at the bottom.
- Click on the New button, under System Variables.



- The Variable Name will be: **LSFORCEHOST**
- The Variable Value will be the Name, or IP address, of the server. *The image below shows an example of an IP address.*



- Click OK to save the new variable.