

## Installing SurvCE Via Windows Mobile Device Center

Windows Mobile Device Center is required to be installed on your PC in order to install, or update, Carlson SurvCE.

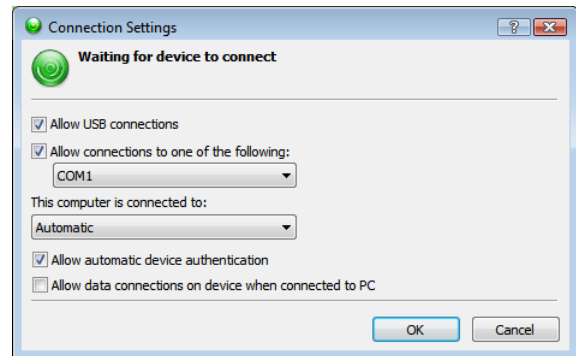
To download and install WMDC on your desktop computer, visit:

- **32-bit version download**  
<http://www.microsoft.com/downloads/details.aspx?FamilyId=46F72DF1-E46A-4A5F-A791-09F07AAA1914&displaylang=en>
- **64-bit version download**  
<http://www.microsoft.com/downloads/details.aspx?FamilyId=4F68EB56-7825-43B2-AC89-2030ED98ED95&displaylang=en>

When using WMDC be sure to use the proper type of cable to connect with your PC.

*Data collectors with only a serial port (9 pin) will require the use of a Null Modem cable.*

1. Note which port on the data collector you are plugging into (i.e. USB, 1, 2, 3, etc.).
2. Launch WMDC. It can be found under Programs in your Start Menu.
3. Once you have opened WMDC, place your cursor over Mobile Device Settings to show the option for CONNECTION SETTINGS.  
Click on Connection Settings.



4. Once you access to the CONNECTION SETTINGS, you will need to select the method by which you make your connection.
  - For USB, simply check "Allow USB".
  - For a Serial cable connection, check the box above the port selection box marked for the serial cable. Then, choose the port which you will use to connect with the PC.



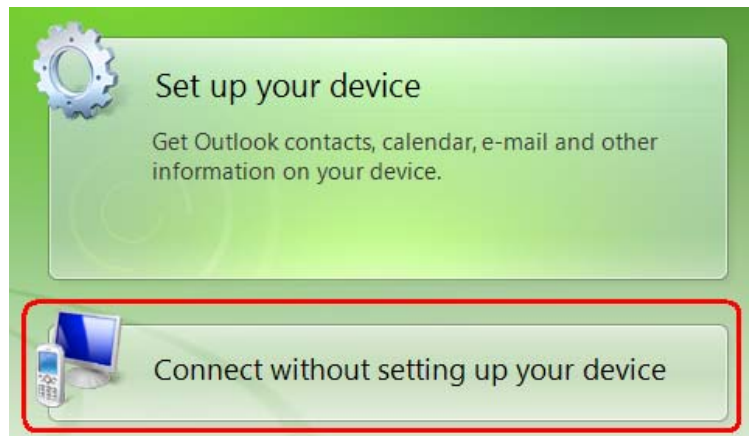
5. Lastly, click OKAY.

6. Now, when you plug your data collector into the computer, WMDC should attempt to connect to the device. If WMDC is not triggered by the cable being plugged in, you may need to reboot your PC.

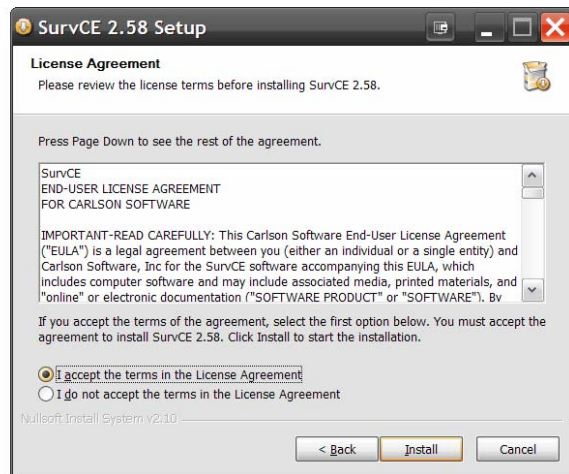
***If you are using a Carlson Explorer:***

*While the image of the PC and remote device is showing, double tap the PC LINK icon on the Windows desktop of the data collector. This will open a window with a message telling you that it is connecting to the PC. You may need to tap the PC LINK icon on your collector a few times until a small computer appears and stays on the taskbar. The WMDC icon on the PC taskbar will also turn green and make a connection sound*

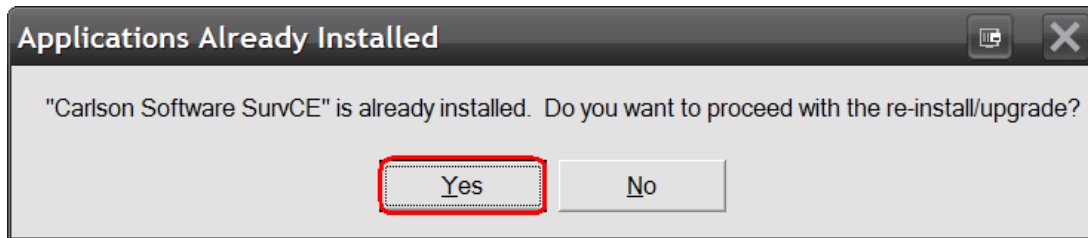
7. Now that your data collector is “connected” to your PC, you will be asked to create a partnership. Press cancel. You do not need to set up a partnership. You will be set up for as guest in order to connect.



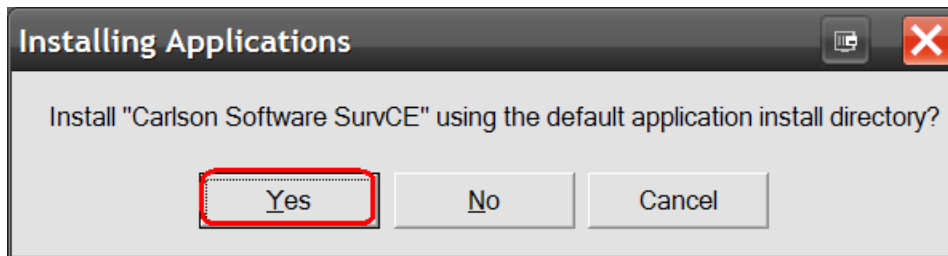
8. Locate the SurvCE.exe where you have it saved on your PC. Then, double tap it to run it.
9. The Carlson Setup install wizard will launch. Click NEXT. Then, click YES.



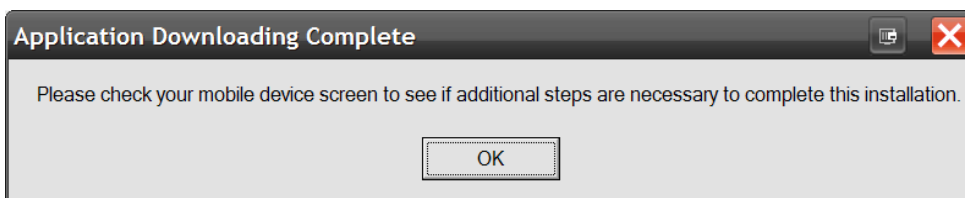
10. Enter the name of the collector user and the name of your company.
11. You will now be asked if you want to overwrite your existing Carlson Software.  
Click YES.



12. You will then be asked if you want the update to be saved in the default directory.  
Click YES.



13. Once the download is complete from the PC, you will be asked to refer to your collector for any further instructions.



14. On the collector, tap the screen to copy the files to the system.
15. Once the SurvCE installation has been completed, please go to the START menu on the data collector. Select PROGRAMS, TOOLS, and then, WARM BOOT.

**You're software should now be successfully installed on your data collector.**