

## Procedure for Installing SurvCE Via Microsoft Activesync

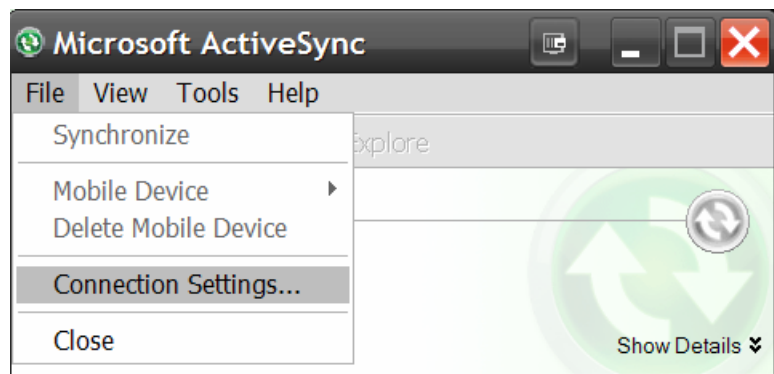
ActiveSync is required to be installed on your PC in order to install, or update, Carlson SurvCE. To install ActiveSync on your desktop computer, visit:

<http://www.microsoft.com/download/en/details.aspx?id=15>

When using ActiveSync be sure to use the proper type of cable to connect with your PC.

*Data collectors with only a serial port (9 pin) will require the use of a Null Modem cable.*

1. Note which port on the data collector you are plugging into (i.e. 1, 2, 3, etc.).
2. Launch ActiveSync. In most cases it can be found on your taskbar as a small, gray, circular icon with two arrows running clockwise.
3. Once you have opened ActiveSync, click on the File drop-down menu and select CONNECTION SETTINGS.



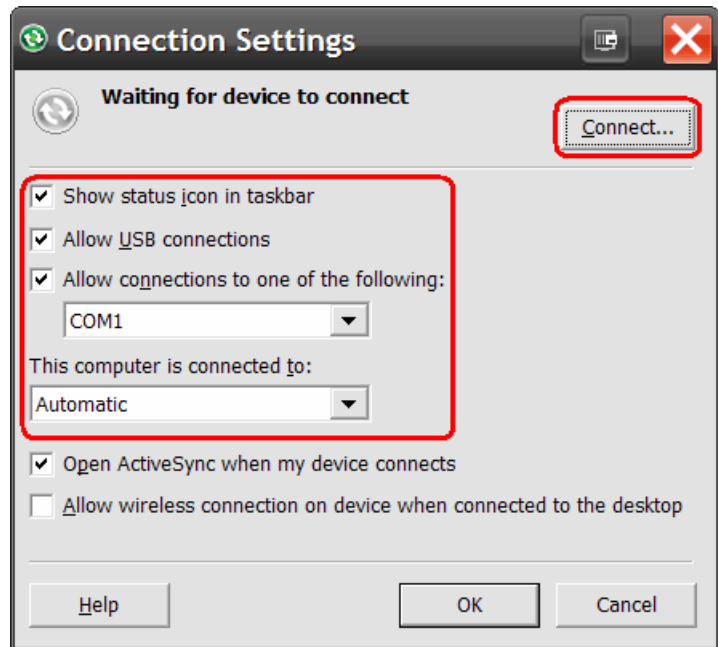
*If you find that you cannot open Connection Settings, you may need to run through the Get Connected sequence once before gaining access to the controls.*

*You will be prompted to make sure that your collector is properly connected to the PC. By selecting Next you will trigger a connection sequence. Once the connection has failed, you will have access to Connection Settings.*



4. Once you have been given access to the CONNECTION SETTINGS, you will need to select the method by which you make your connection.

- For USB, simply check “Allow USB”.
- For a Serial cable connection, check the box above the port selection box marked for the serial cable. Then, choose the port which you will use to connect with the PC.



5. Lastly, click OKAY.

6. Open the FILE pull down, again, and select CONNECTION SETTINGS.

7. Then, select CONNECT on the upper right hand corner of the screen. This will bring you to another window, asking you to make sure that your device is plugged in and ready to connect. Click Next.

8. You will now see an image of a PC sending information to a smaller computer.

***If you are using a Carlson Explorer:***

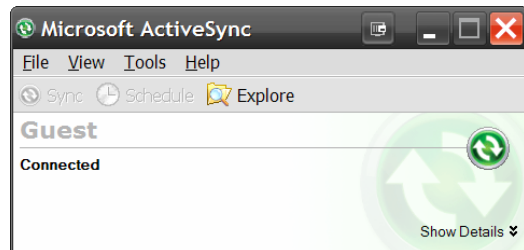
*While the image of the PC and remote device is showing, double tap the PC LINK icon on the Windows desktop of the data collector. This will open a window with a message telling you that it is connecting to the PC. You may need to tap the PC LINK icon on your collector a few times until a small computer appears and stays on the taskbar. The ActiveSync icon on the PC taskbar will also turn green and make a connection sound*



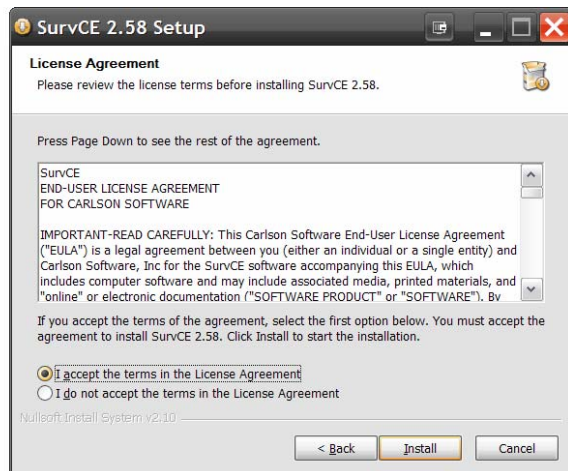
9. Your PC will now prompt you to create a partnership. Press cancel. You do not need to set up a partnership. You will be set up for as guest in order to connect.



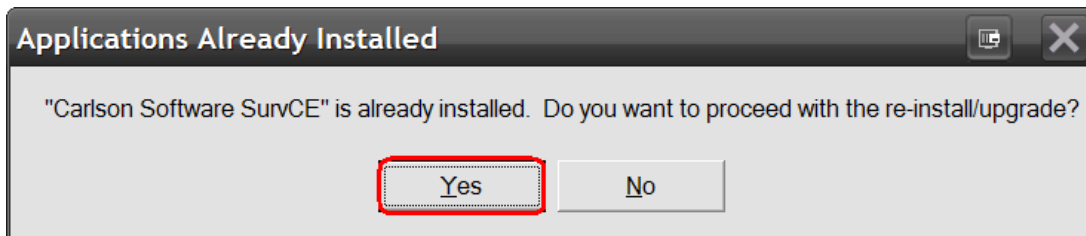
You do not need to set up a partnership. You will be set up for as guest in order to connect.



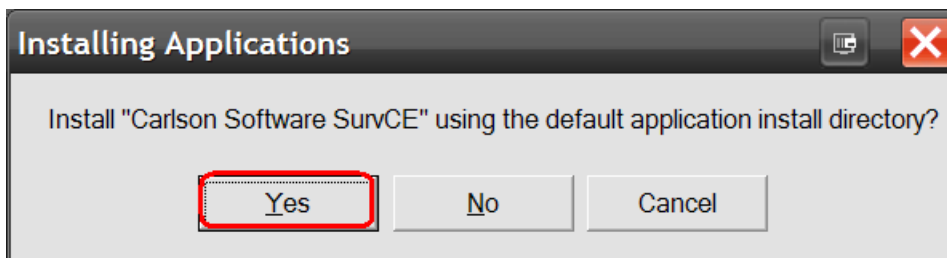
10. Locate the SurvCE.exe where you have it saved on your PC. Then, double tap it to run it.
11. The Carlson Setup install wizard will launch. Click NEXT. Then, click YES.



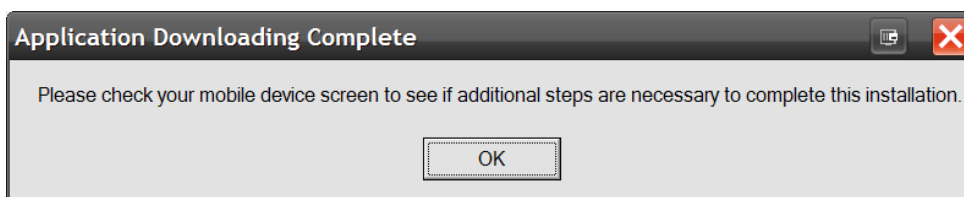
12. Enter the name of the collector user and the name of your company.
13. You will now be asked if you want to overwrite your existing Carlson Software. Click YES.



14. You will then be asked if you want the update to be saved in the default directory. Click YES.



15. Once the download is complete from the PC, you will be asked to refer to your collector for any further instructions.



16. On the collector, tap the screen to copy the files to the system.
17. Once the SurvCE installation has been completed, please go to the START menu on the data collector. Select PROGRAMS, TOOLS, and then, WARM BOOT.

**You're software should now be successfully installed on your data collector.**