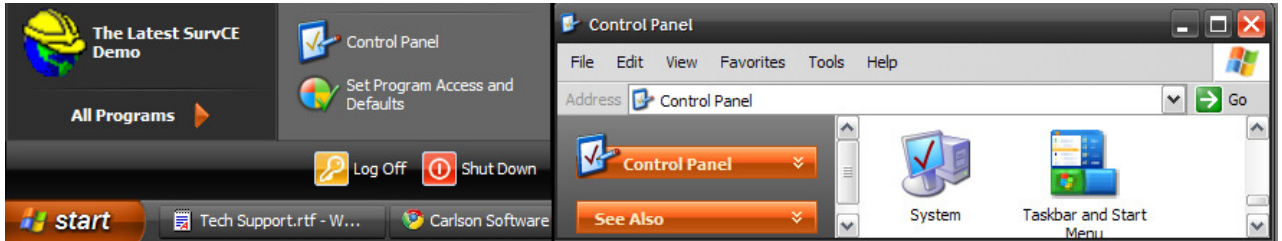


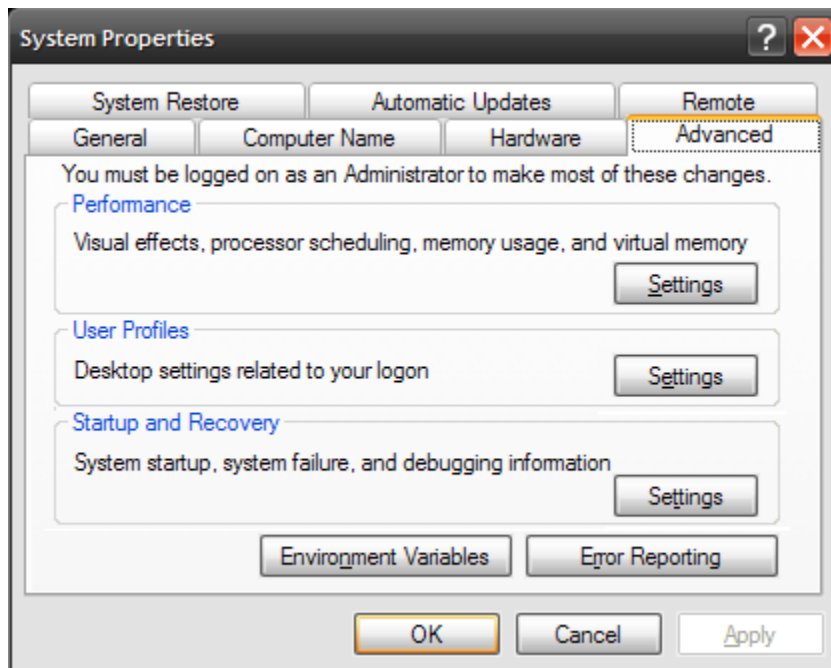
If you are **unable to see any servers on the subnet** you will need to specify the license server by setting an environment variable pointing to server's name or IP address (Rainbow recommends the IP address):

\* On Windows NT, 2000 and XP:

1. Open the Control Panel and then open System.



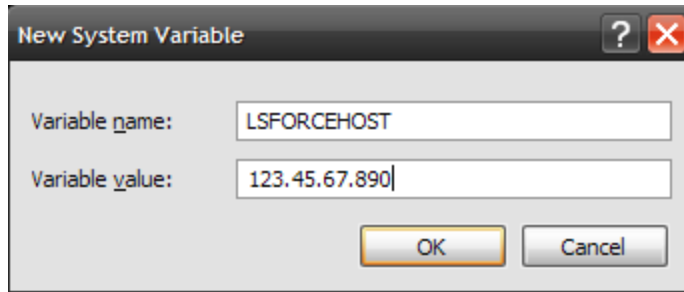
2. Click on the Advanced tab and click on Environment Variables.



3. Click on New and use:

- LSFORCEHOST for the Variable name, and,
- The servername or the serverIPaddress for the Variable value.

4. Click OK to save.



5. Open the command prompt and type SET, followed by Enter.
6. You should see a line something like:  
SET LSFORCEHOST=SERVERNAME, where  
SERVERNAME is the server name or IP address specific for  
your setup.

```
C:\WINDOWS\system32\cmd.exe
Microsoft Windows XP [Version 5.1.2600]
(C) Copyright 1985-2001 Microsoft Corp.

C:\Documents and Settings\Brian>set
ALLUSERSPROFILE=C:\Documents and Settings\All Users\WINDOWS
APPDATA=C:\Documents and Settings\Brian\Application Data
asl.log=Destination=file;OnFirstLog=command.environment
CLASSPATH=.;C:\Program Files\Java\jre6\lib\ext\QTJava.zip
CLIENTNAME=Console
CommonProgramFiles=C:\Program Files\Common Files
COMPUTERNAME=stranger
ComSpec=C:\WINDOWS\system32\cmd.exe
FP_NO_HOST_CHECK=NO
HOMEDRIVE=C:
HOMEPATH=\Documents and Settings\Brian
LOGONSERVER=\.\stranger
LSFORCEHOST=123.45.67.890
NUMBER_OF_PROCESSORS=1
OS=Windows_NT
Path=C:\Program Files\Common Files\Microsoft Shared\Windows Live;C:\WINDOWS\system32;C:\WINDOWS;C:\WINDOWS\system32\WBEM;C:\Program Files\ATI Technologies\ATI Control Panel;C:\Program Files\Common Files\Autodesk Shared\;C:\Program Files\Leica Geosystems\Shared;"C:\Program Files\Common Files\Autodesk Shared\";C:\Program Files\Common Files\Carlson Shared\Bin;C:\Program Files\cvst;C:\Program Files\QuickTime\QTSystem\
```