

SS900 Radio and Geodimeter Setup Guide

Prepared: 7-20-2007

Here's the setup (using a null modem cable between the base and 600+):



A. Configure Total Station:



This is the power supply. You can also use a battery pack.

The cable from the power supply goes to the Geodimeter.



At this point, you should have the 9-pin serial cable plugged into the data collector.



After hitting PWR and calibrating the machine, this is the standard window:



Now, press the MNU button on the Geodimeter keypad.



Then click 4 on the keypad to take you to the Data com window:



Then click 1. Select device, which brings you to this window:





Carlson Software Inc.
102 West 2nd Street
Maysville, KY 41056

www.carlsonsw.com
Phone: (606) 564-5028
Fax: (606) 564-6422

Then click 2. Serial:

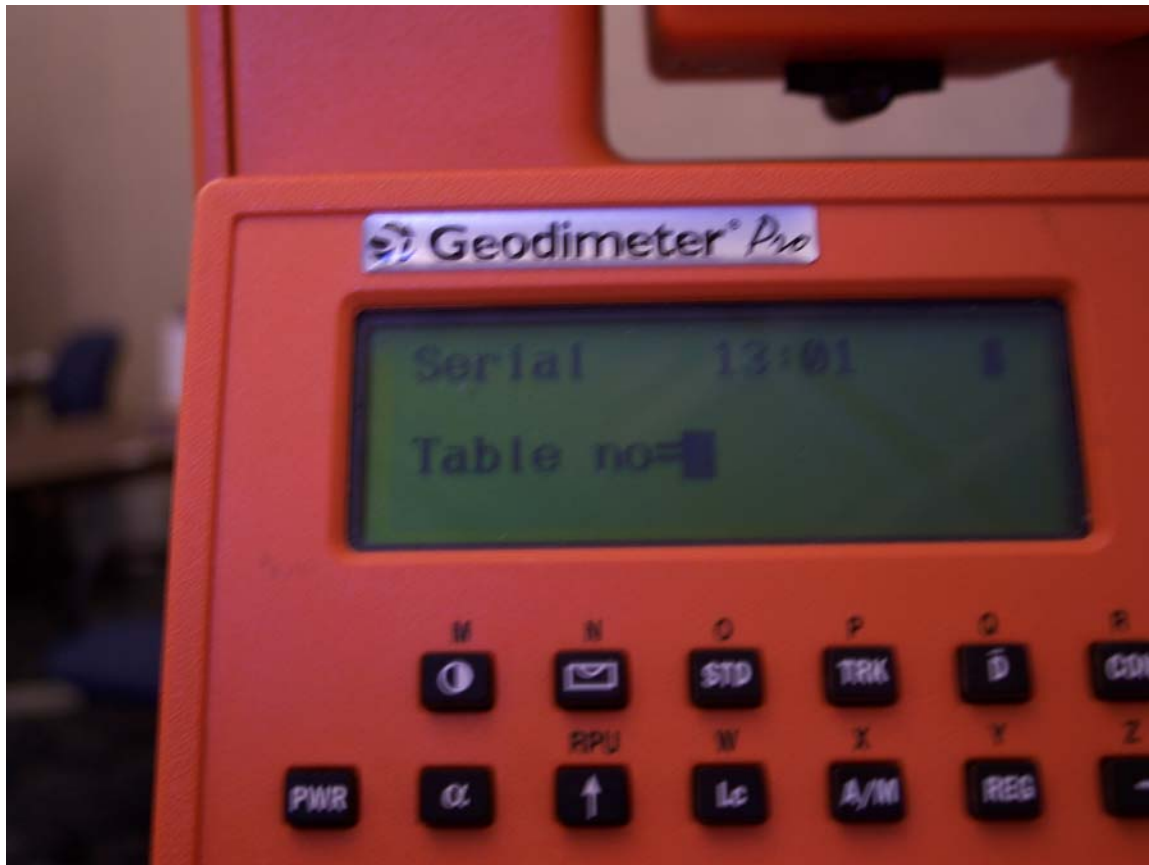


Click the ENT button on the keypad.



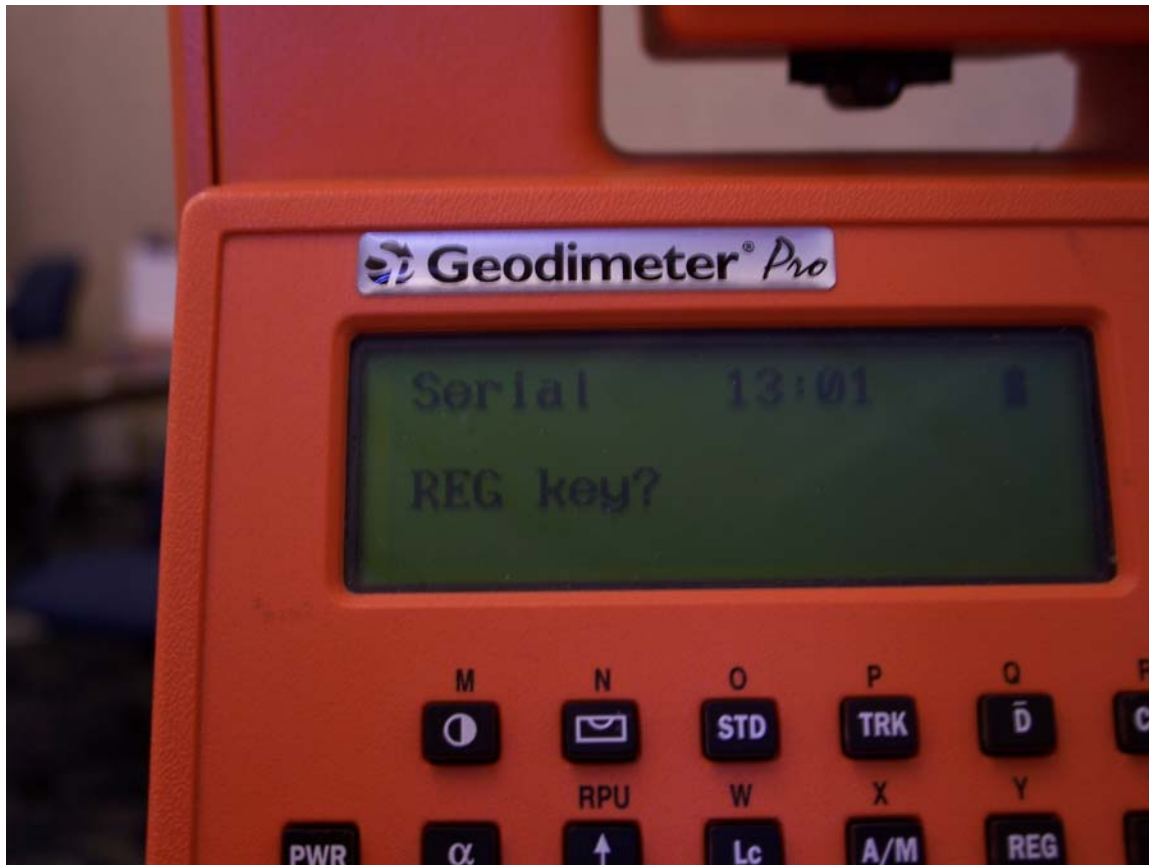
Click ENT again if the settings are correct. If they are not correct, then change them and click ENT.

Now, after that you will come to this window:



Click ENT.

Then this window will appear:



Click ENT again.

Then you will be back at the first window which looks like this:



Now hit the RPU button, with the arrow pointing straight up.

That will bring you to a window which looks like this:



Then click 3. Remote which leads you to this screen:



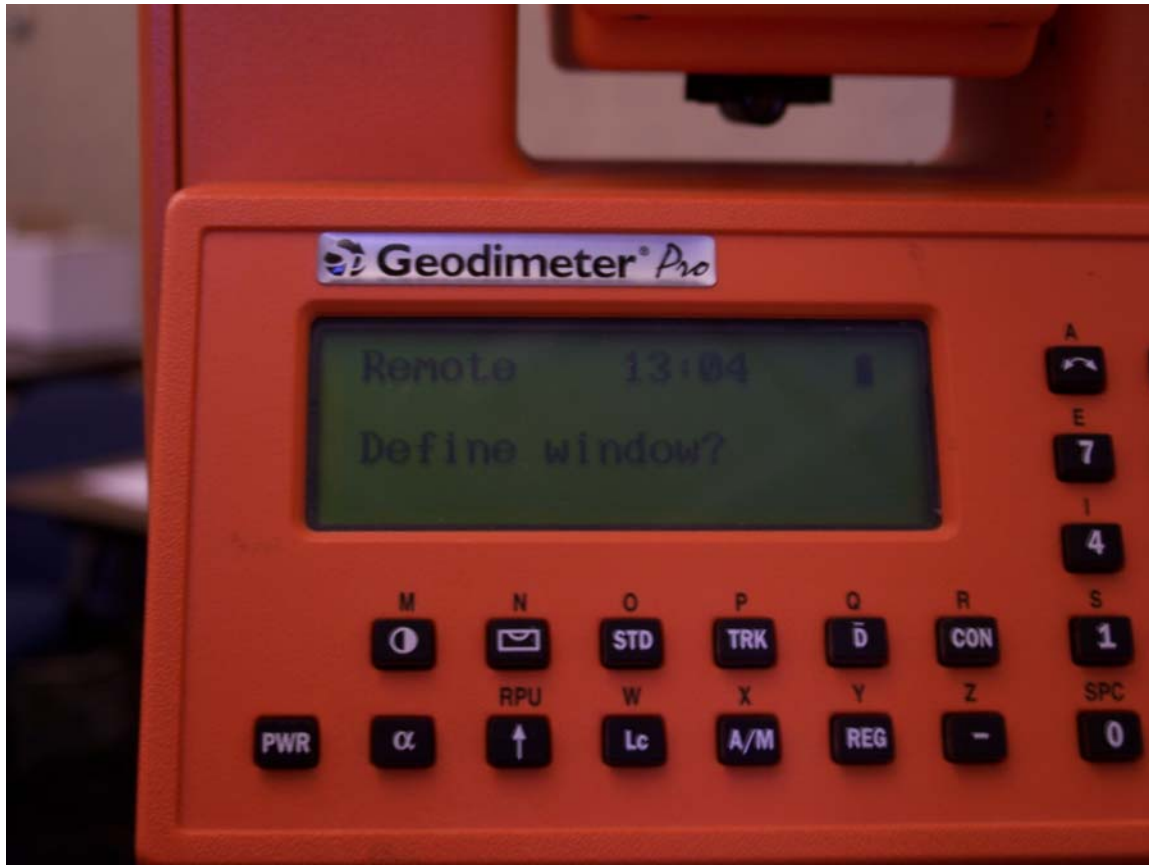


Carlson Software Inc.
102 West 2nd Street
Maysville, KY 41056

www.carlsonsw.com
Phone: (606) 564-5028
Fax: (606) 564-6422

Then click 1. OK.

Your new window will look like this:



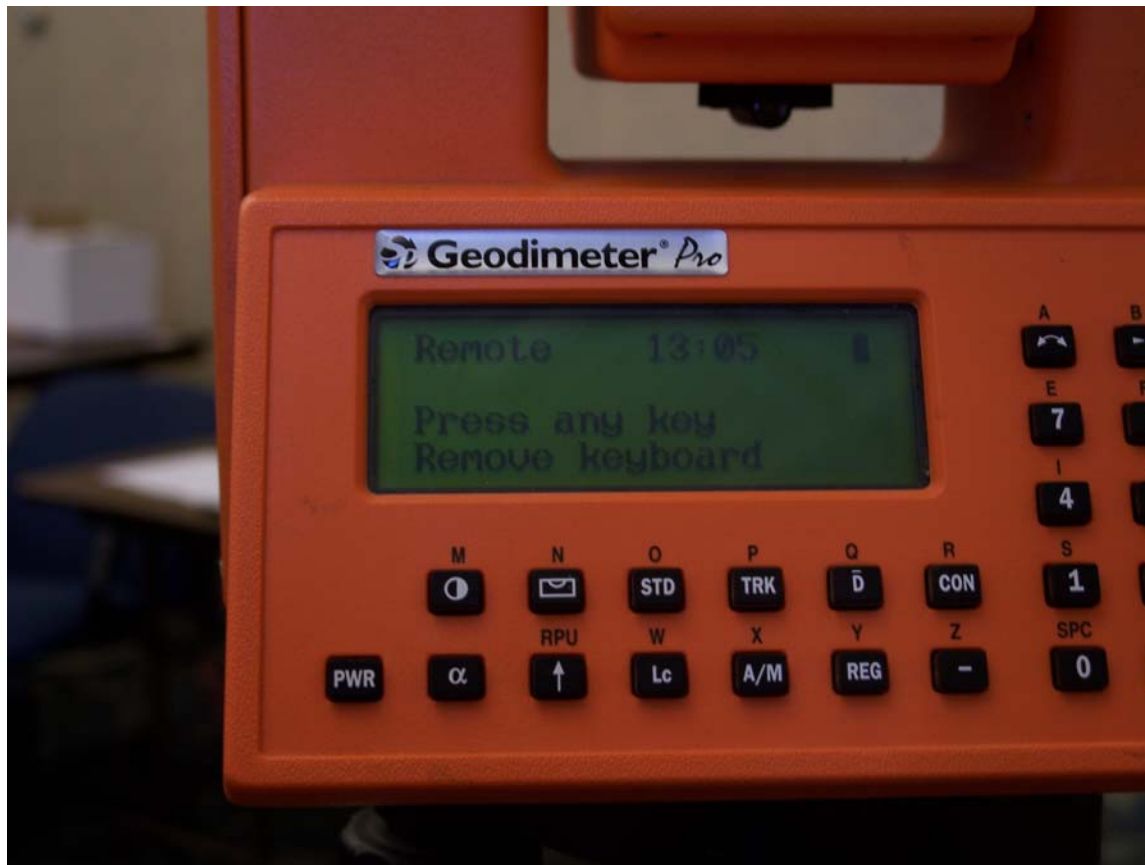
Click the (←) or the No button (same button).

Then the window will look like this:



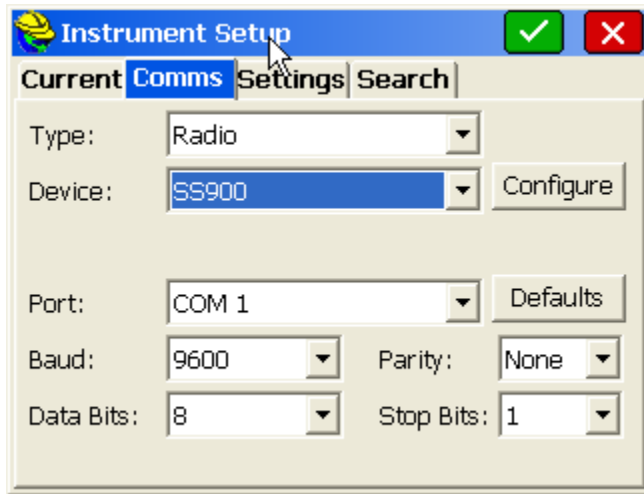
Again, click the (←)/No button.

Then you will be prompted to press any key and remove the keyboard. You must remove the keyboard:

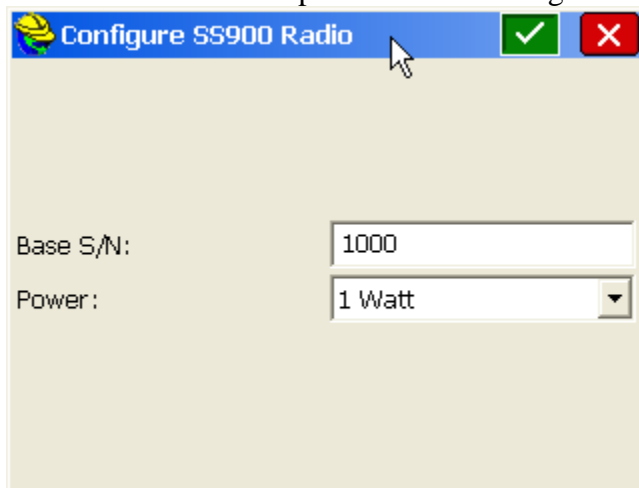


B. Configure Base Radio:

1. Connect Explorer 600+ to base radio using included null modem cable.
2. Start SurvCE and go to Equipment->Total Station Setup.
3. Choose Manufacturer: Trimble 5600; Device: Dir Robotic or Dir Robotic DR Series.
4. Go to Comms tab.
5. Configure per screen below:



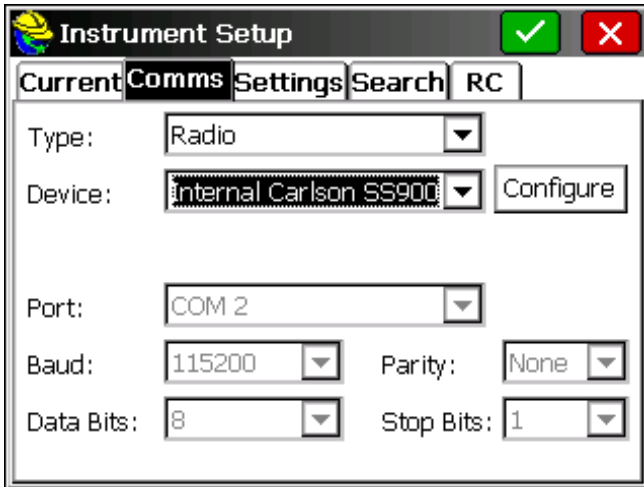
6. Press “configure” and input your base serial number (located on back of base radio) and choose the desired power level. Press green check box.



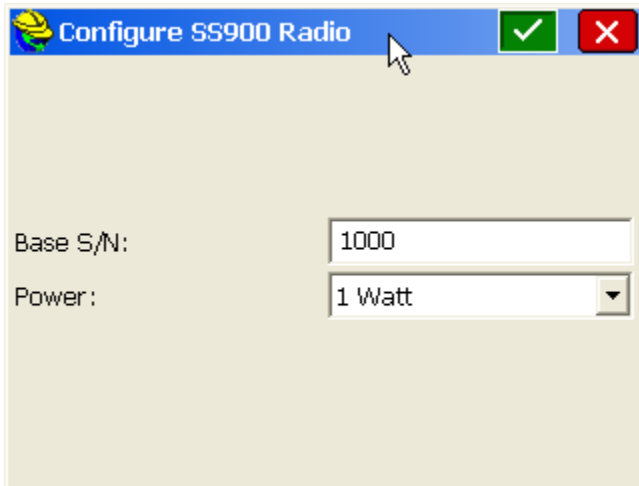
7. Connect instrument to base radio.

C. Configure Rover Radio:

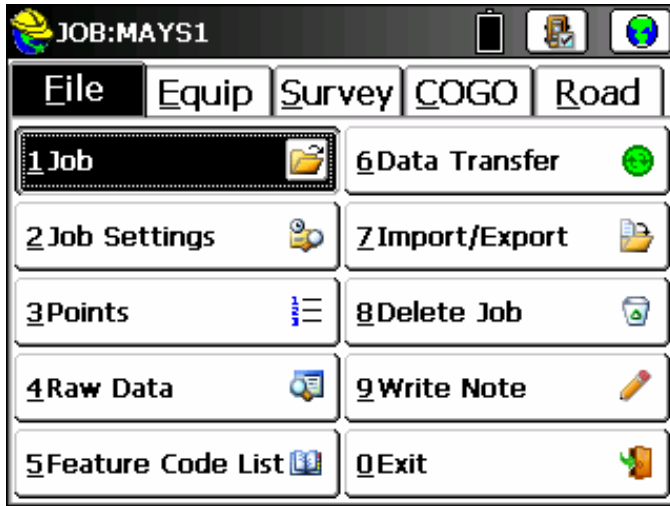
1. In SurvCE on Comms tab change “Device” to Internal SS900 Radio. Com settings at bottom of dialog will grey out:



2. Press “Configure” and configure per screen below. Serial number entered in step B6 above should match serial number entered here. Select power level:



3. Press green check box to return to Comms tab.
4. Press green check box to establish communication and return to Equipment tab:



5. Setup is now complete. You can start working.