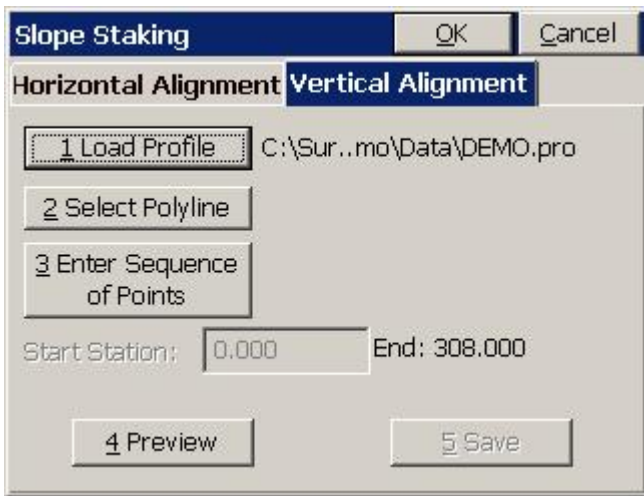


Carlson SurvCE: Creating and Viewing Profiles from Points

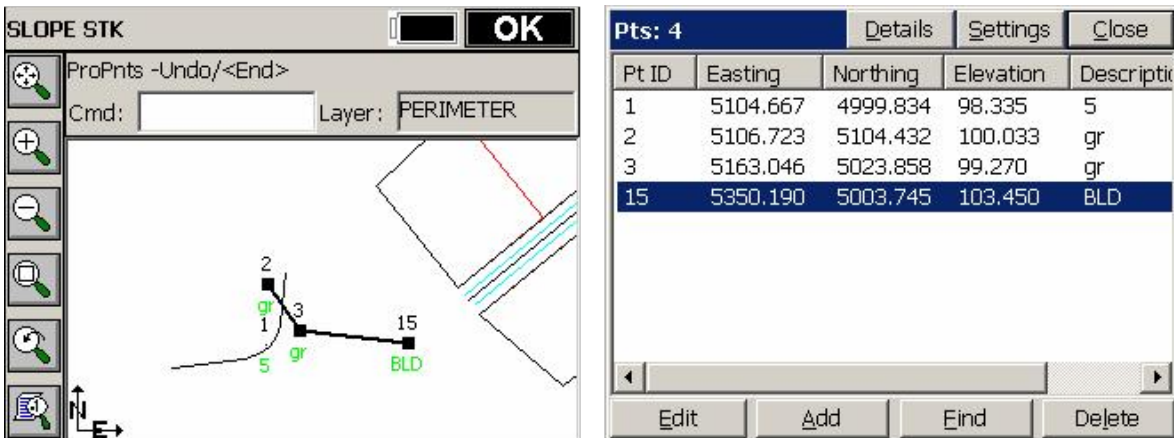
The Input-Edit Profile command, found under the Roads menu, does not have profile (long section) entry from points. It expects station (chainage) and elevation to be entered. Several commands in Carlson SurvCE, however, do allow the creation of profiles from points as a side-effect or fringe benefit of that command. These commands are distinguished by the Horizontal Alignment and Vertical Alignment tab buttons. They appear in:

- (1) Slope Staking using Point-Defined Alignments within Roads
- (2) Stakeout Centerline within Stakeout Line/Arc under Surv
- (3) Offset Stakeout under Surv

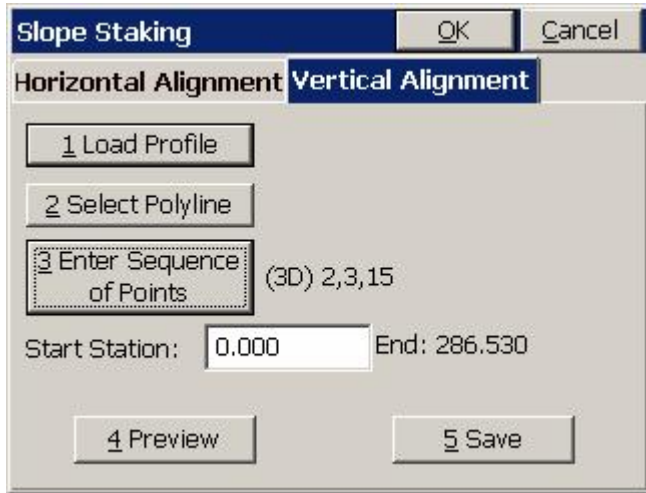
These three commands (two are themselves sub-options) have a common screen layout, as shown below:



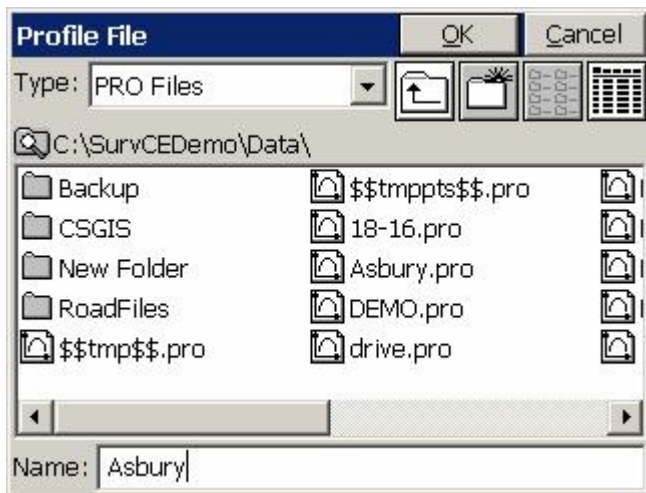
If the Vertical Alignment tab is selected, then points can be entered by point number or picking from the screen by tapping option 3 above.



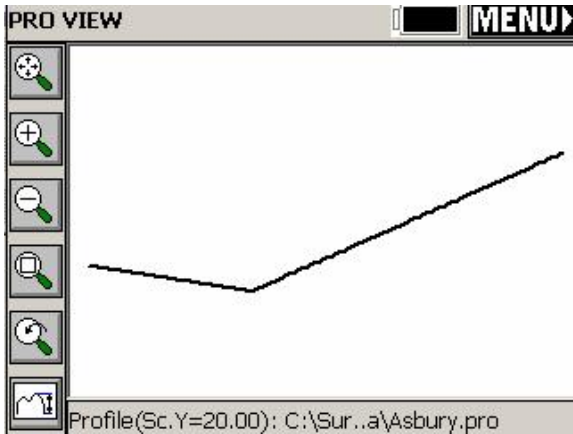
At this point, you can enter the point sequence as 2 (Enter) then 3 (Enter) then 15 (Enter), or simply pick the points on the screen. The points are then connected with temporary symbols and a solid line for visual confirmation. When you press OK, you will have a point-defined vertical alignment, which you can then save by tapping the Save button in the lower right of the screen.



Note the end station (chainage) is shown as 286.530. When you click Save, you can name the vertical alignment (profile/long section).



At this point, you can cancel the command you were in (to make the profile). Now you can re-use this profile in any command for any purpose, view it and edit it. It can be viewed at any scale exaggeration desired using the command Draw Profile under the Roads menu.



You can also use Input-Edit Profile to edit the profile data, and enter distances down the alignment to check elevations at particular stations or chainage locations.

| Input-Edit Profile | | | | Clear | Close |
|-------------------------------|----------|---|---|---------|-------|
| C:\SurvCEDemo\Data\Asbury.pro | | | | | |
| PVI Station | PVI El | Slope % | VC Lng | | |
| 0 | 100.0335 | XXXXXXXX | XXXXXXXX | | |
| 98.3083 | 99.27 | -0.7766 | 0 | ▲ | |
| 286.53 | 103.45 | 2.2208 | 0 | ▼ | |
| | | | | | |
| Check Sta | 149.75 | <input type="checkbox"/> Show Zeroes | <input type="checkbox"/> Slope as Ratio | | |
| El: 100.4124 | | <input type="checkbox"/> Circular Curve | | | |
| Load | Add | Remove | High-Low | Save As | |

The plan view linework, to match the profile view, can be drawn using the Draw pulldown in the Map screen (2D Polyline or 3D Polyline). Any lines can also be erased or offset using the Offset command.

