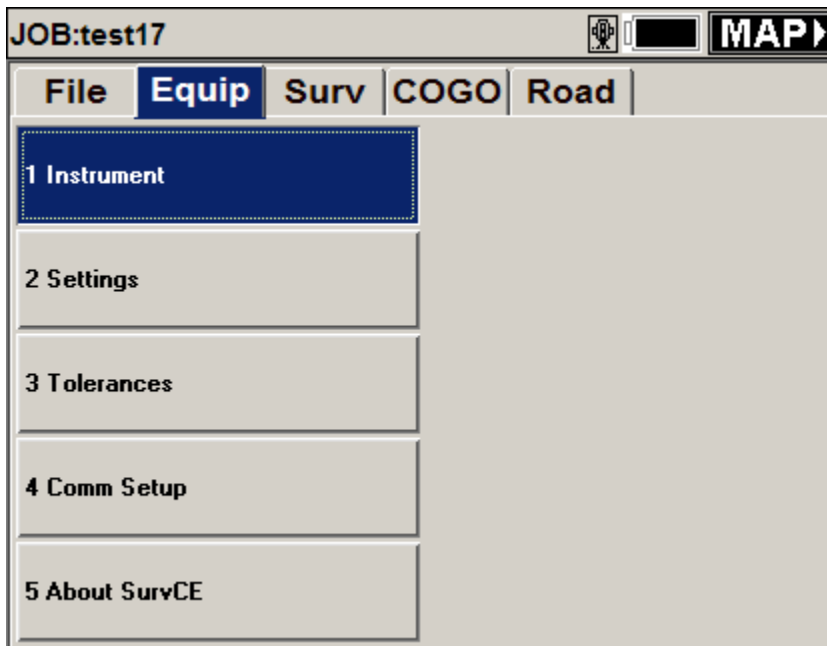


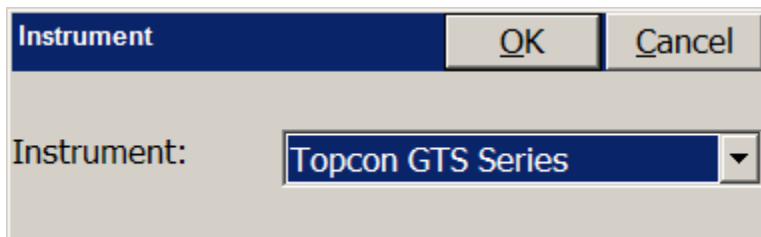
## Topcon GTS 220 Connection Instructions

1. Go to the “Equip” tab in SurvCE

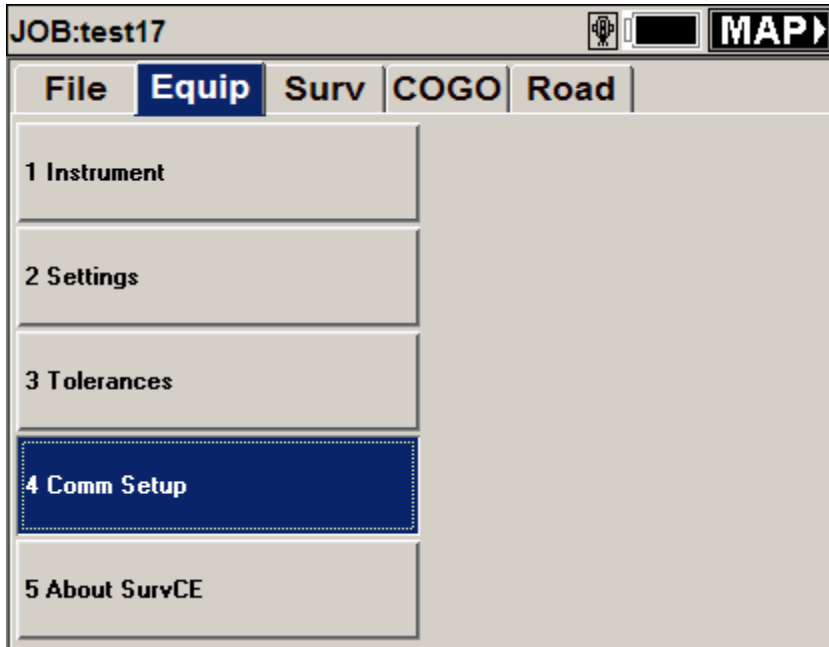


2. Click on “Instrument”

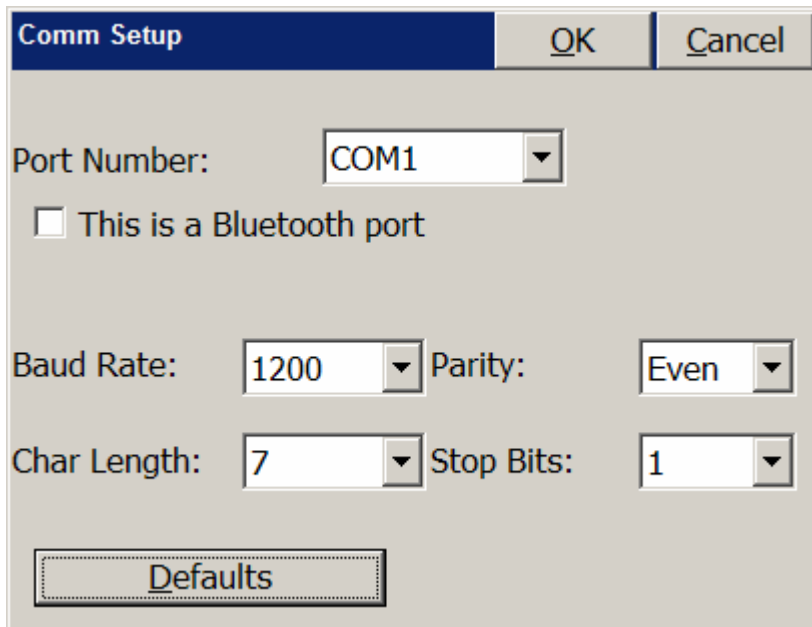
3. Choose “Topcon GTS Series” and press “OK”



4. Choose “Comm Setup” from the “Equip” tab.



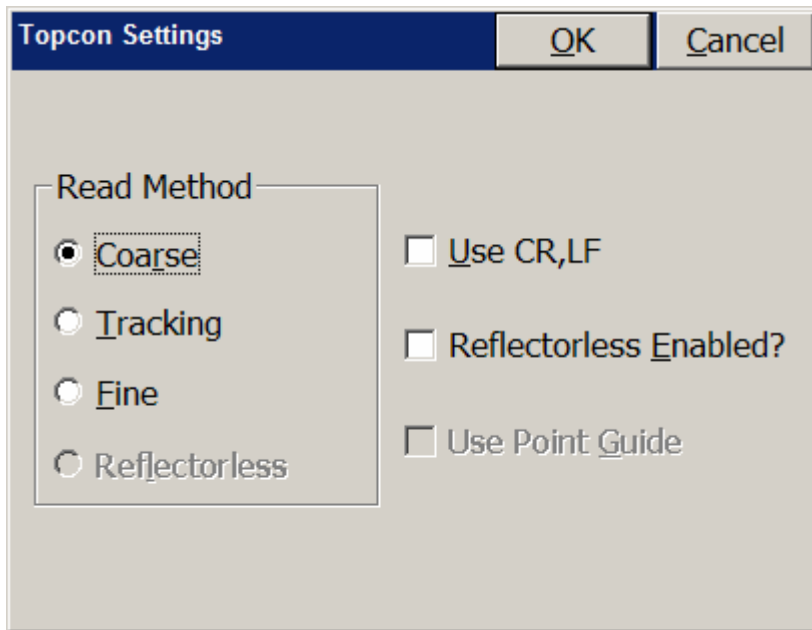
5. Choose “Port Number : COM1”, “Baud Rate: 1200”, “Parity: Even”, “Char Length: 7”, “Stop Bits: 1” like the diagram below:



6. Press “OK”

7. Choose “Settings” from the “Equip” tab.

8. Choose “Read Method: Course”.



**9. Press “OK”**

**10. You are ready to begin using SurvCE!**