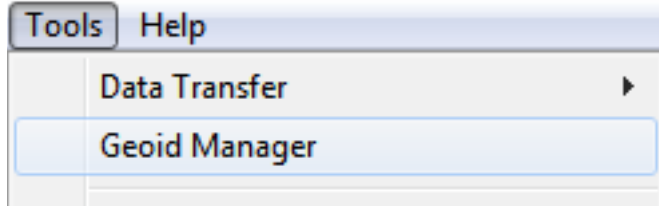


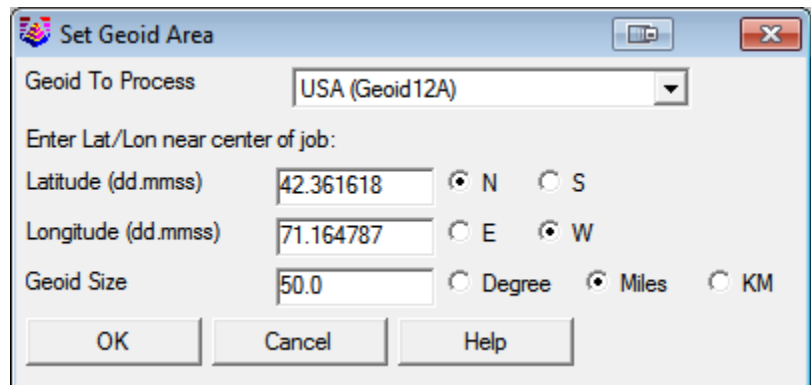
To create a Geoid, click on the Tools drop-down and select Geoid Manager.



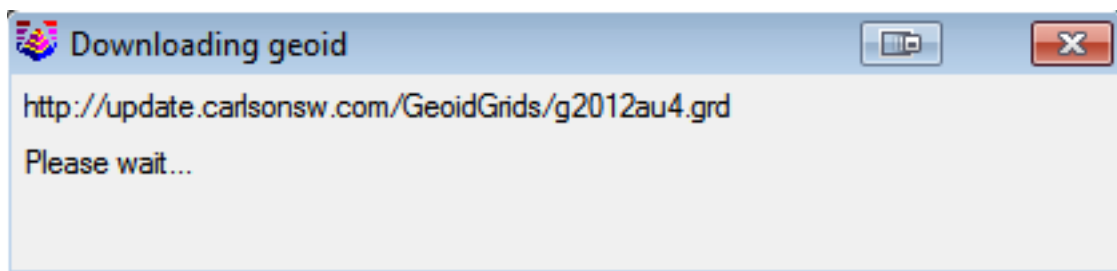
This command will carve out a portion of from a specified Geoid. Since Geoid grids are very large, this procedure will carve out a precise portion of it, to avoid overloading the memory on the remote device running SurvCE.

You will be prompted for the approximate latitude and longitude of the job, and the size of the area desired in miles, kilometers or degrees of latitude and longitude. To define a Geoid area, make sure that this criterion is met.

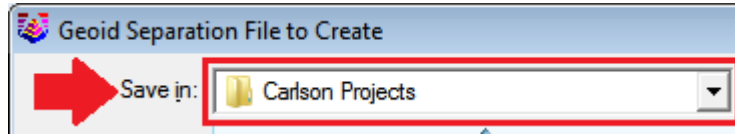
1. Specify the geoid type.
2. Enter the latitude and longitude near the center of the job area.
3. Specify the Grid size in miles, kilometers, or degrees .



Click OK to enable the program to connect to our server via the internet, to carve the specified area for your grid file.



When the process is complete, you will be prompted to name, and save, your .gsf file. Please note where the program will be saving the file.

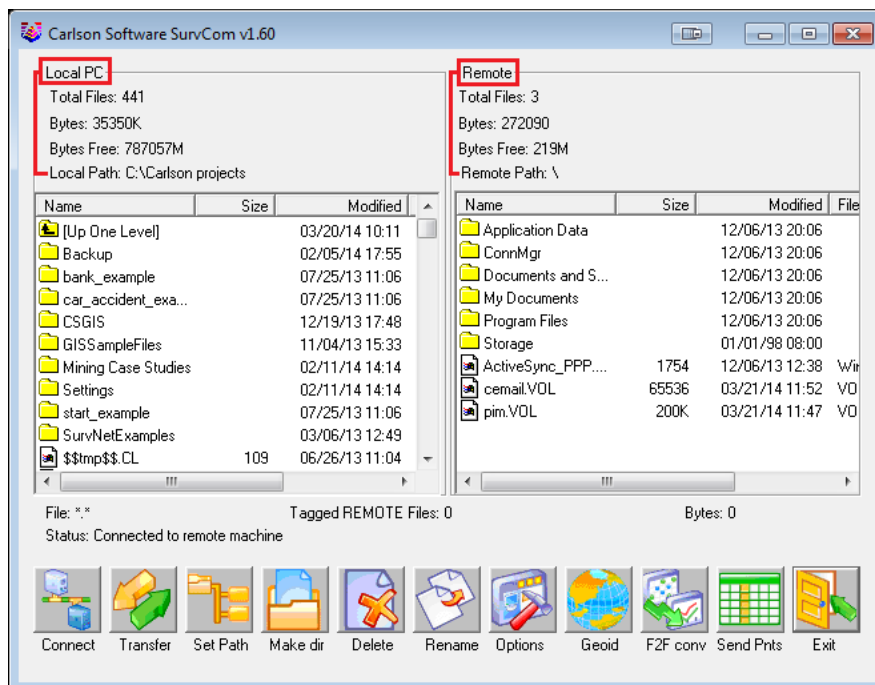





Transferring the GSF to the Data Collector

1. Click on the Tools drop-down. Select Data Transfer, then SurvCE/Fast Survey.

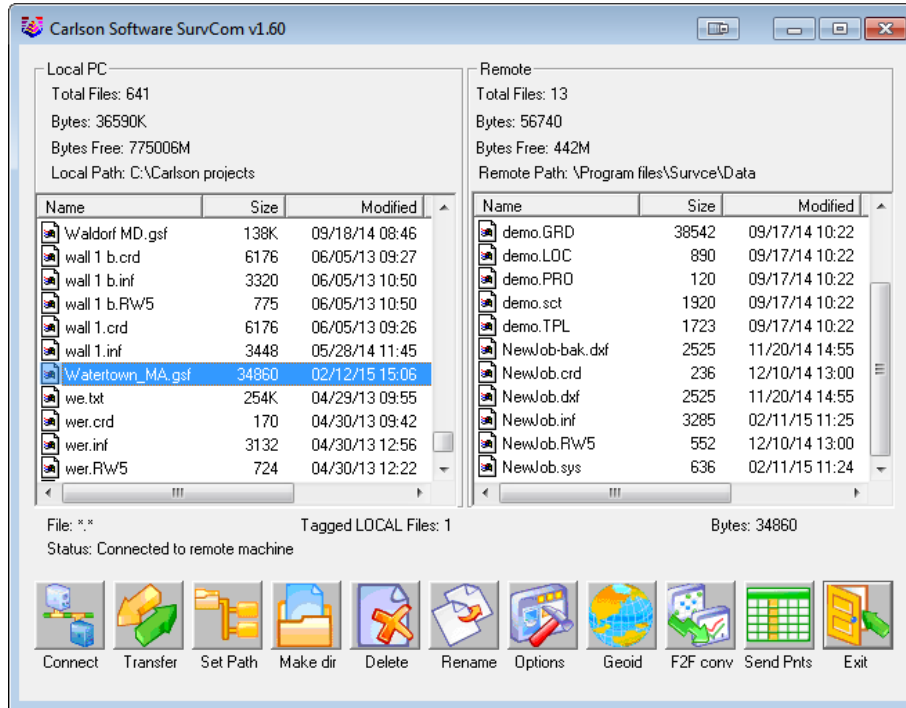


2. The SurvCom window is divided into two panes. Each window pane shows where the program is currently looking at data. This is referred to as the Data Path. The Local Path displays the data on your PC on the left-hand side. The Remote Path displays data in your data collector on the right-hand side. The Remote path should always be set to the DATA folder, of your data collector.



To set the path to the data folder: First, double-tap on  Program Files
Then, double-click on  SurvCE
Then, double-click on  Data

3. Browse to the .gsf file, that you wish to transfer. Then, double-click on the file name to transfer it.



A message will be shown, telling you that the file was transferred successfully to your data collector, and the .gsf can now be found in the Remote pane of the SurvCom window.

4. On the data collector go to the Equip tab / Tap Localization / tap the GPS tab / tap "Geoid File" button / select the file we just created / Tap OK / Tap OK

