

## Table of Contents

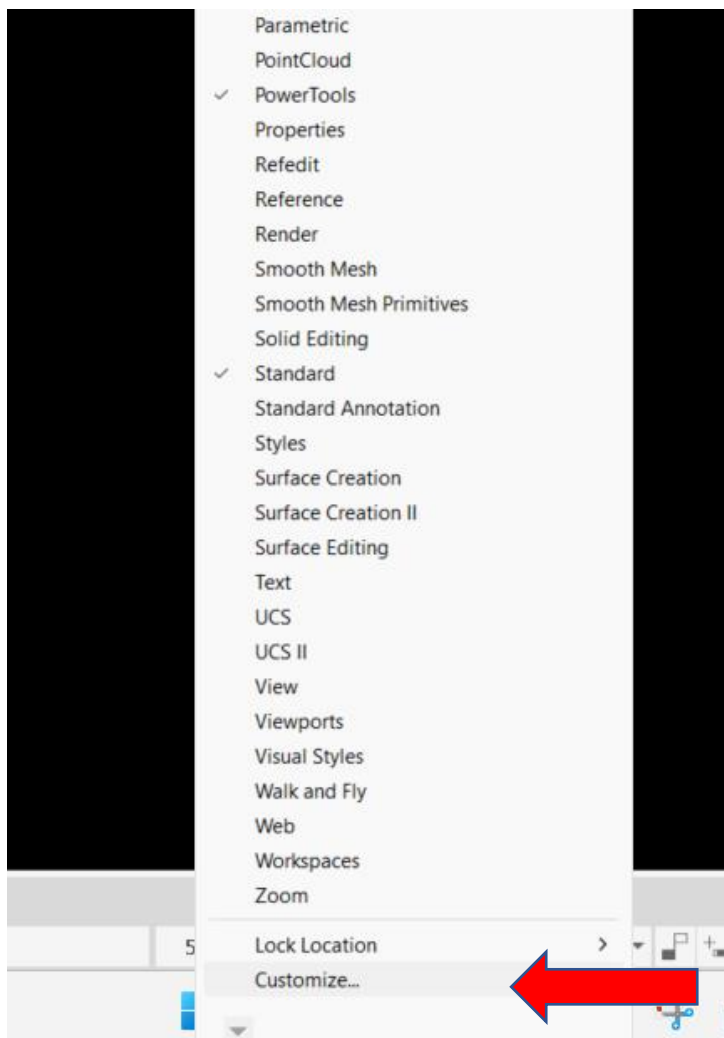
1	INTRODUCTION.....	1
2	CUI.....	1
3	Create a new Toolbar.....	3
4	New Commands.....	3

## 1 INTRODUCTION

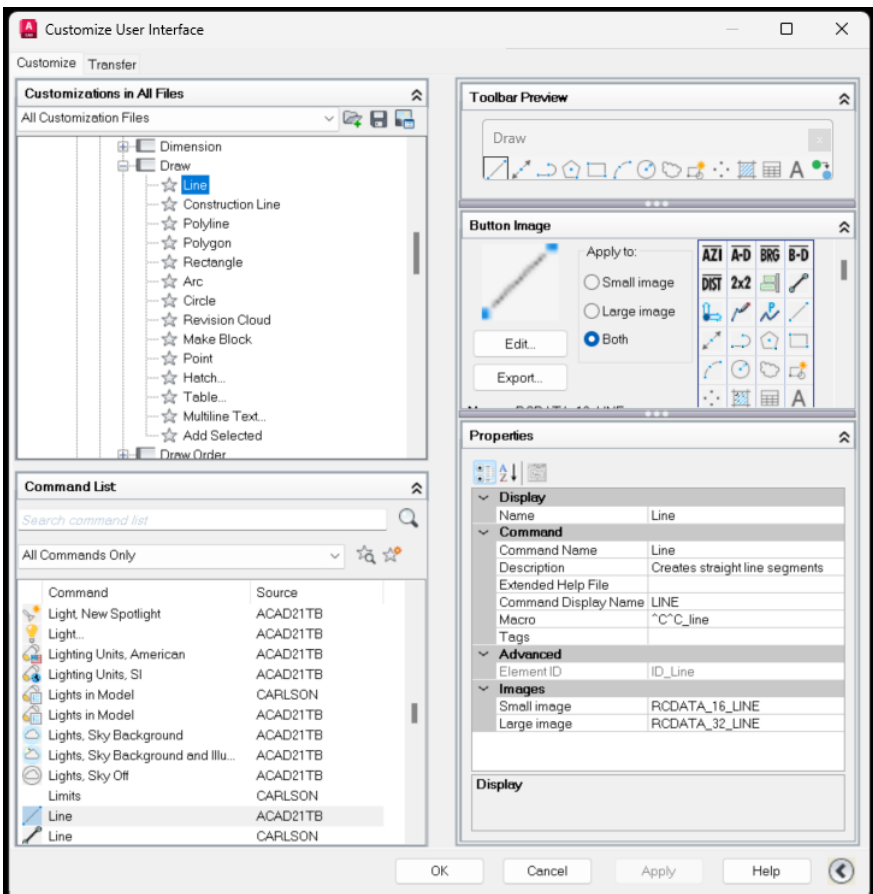
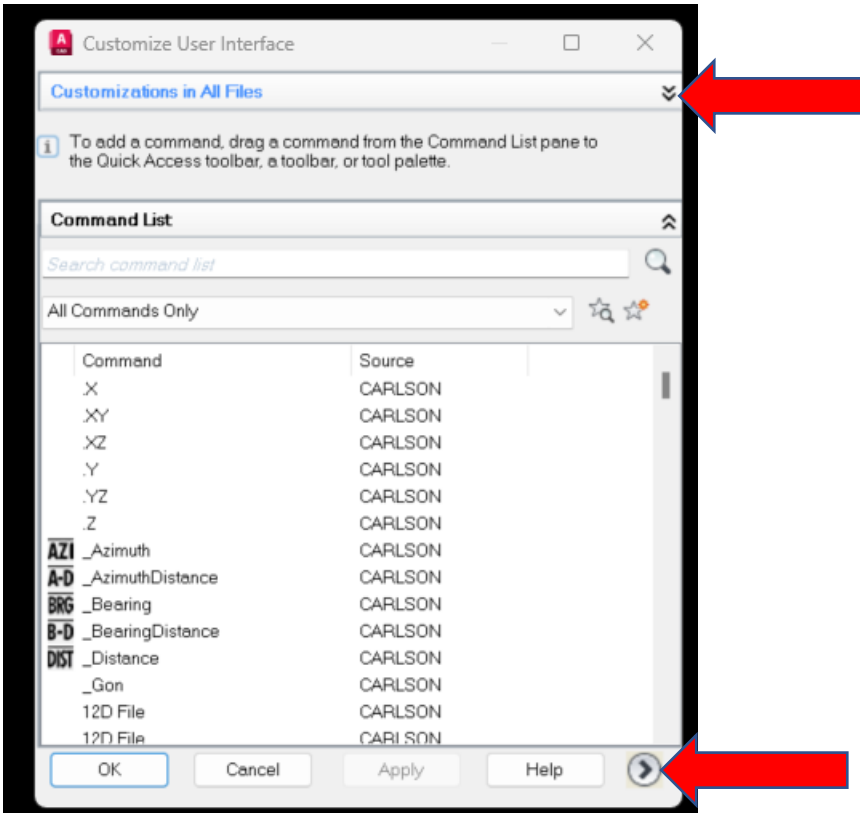
It is sometimes necessary to create Command buttons, especially if more than one command is required to complete a task. This guide will help create new **Toolbars** and **Commands**.

## 2 CUI

**CUI** (or Customize User Interface) is where the commands & buttons are saved. To access this area either type **CUI** into the command line or in the a toolbar, right click and scroll to the bottom then select '**Customize**'. The second method will place you in the toolbar.

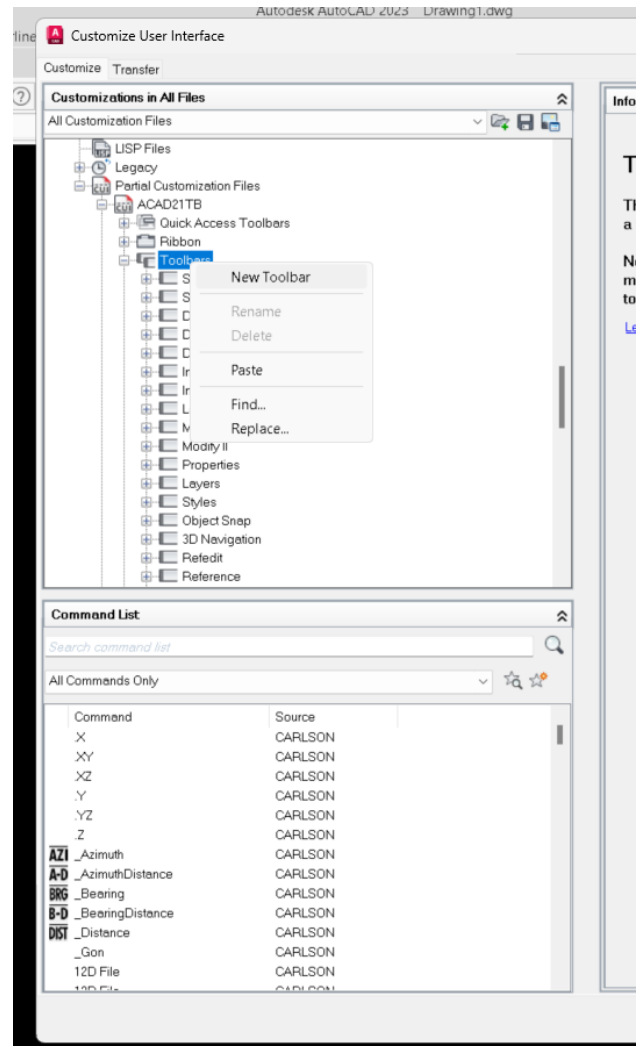
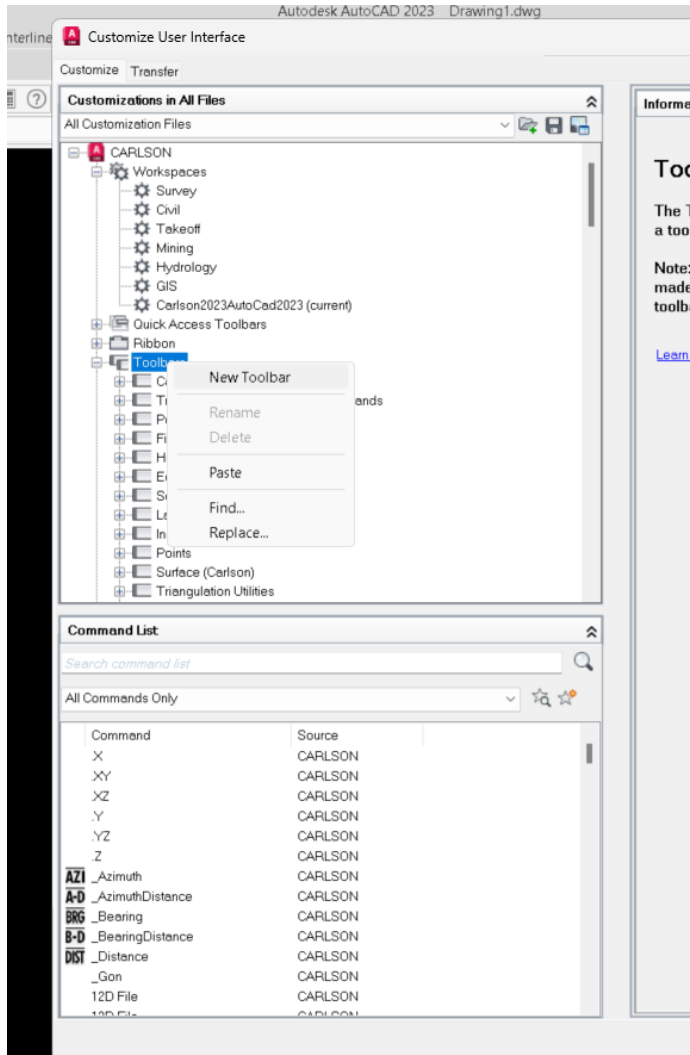


The Customize User Interface Edit box should be expanded by selecting the down arrows (top right) and the expansion arrow (bottom right)



### 3 Create a new Toolbar

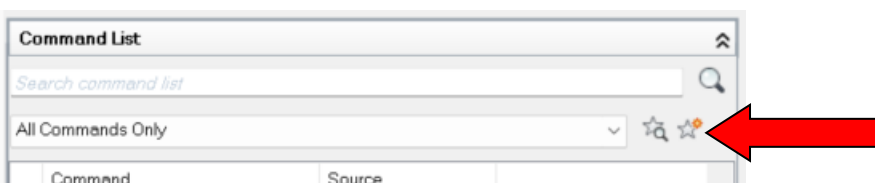
You may wish to create a new toolbar and place all the new commands in one area. To do this either go to the **Carlson/Toolbars** or scroll down to the **Partial Customization Files/ACAD21TB/Toolbars**. While highlighting the Toolbars right click and add **New Toolbar**, this should then be renamed.



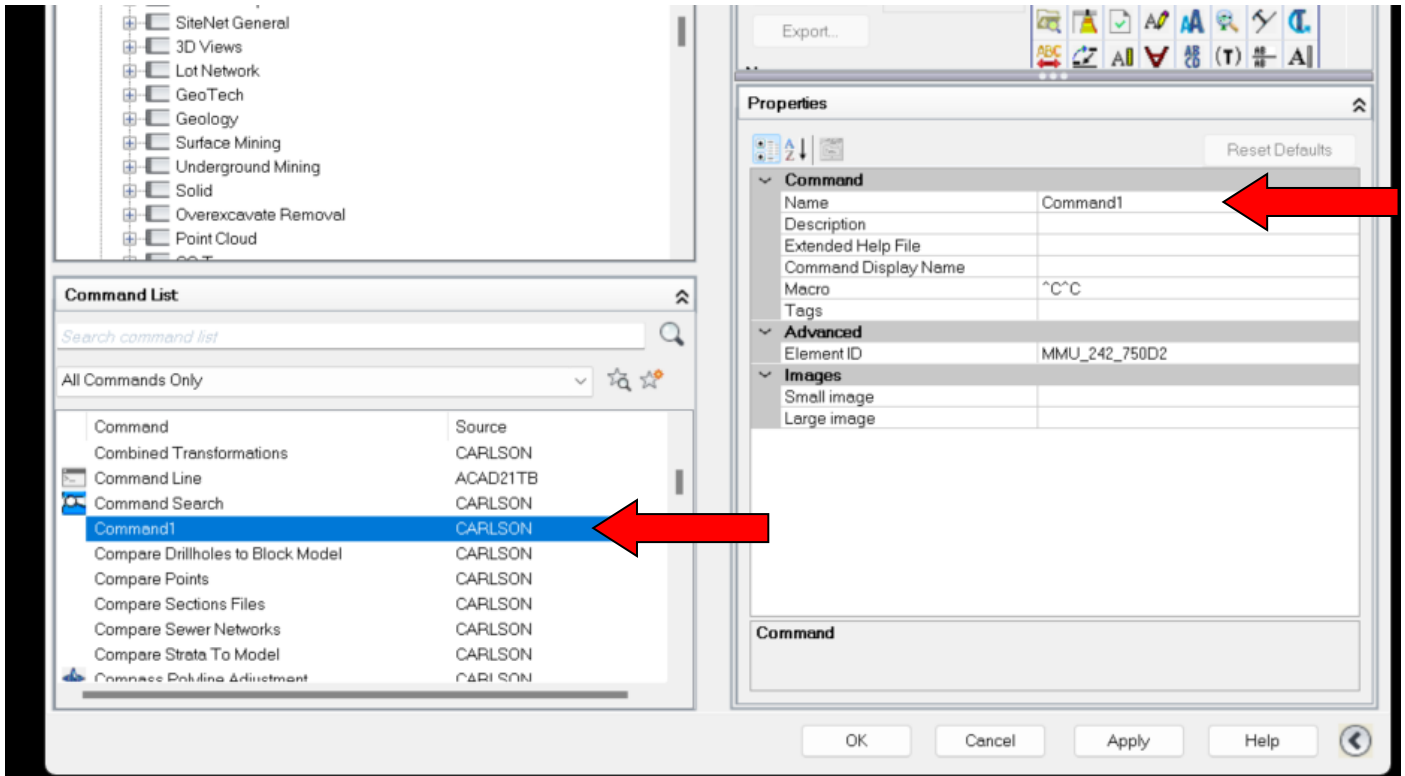
### 4 New Commands

Commands from the **Command List** can be added to or removed from current toolbars. Commands that are removed can always be added back from the **Command List**.

To create a new **Command**, first select the star (with a star).



This will create a new **Command1** in the list.



On the right side of the box, under **Properties**, the **Command1** can be changed to a name that relates to the new command. A description can be added in the **Description** line, this text will appear when the cross hair hover over the button on the main screen.

Attached with this guide is a Word document with some useful commands and a brief description. These would replace the ^C^C on the **Macro** line.

An image can either be selected from the list or created in the **Button Image** area.

Once the command has been created it needs to be moved up into an existing Toolbar or the new Toolbar.

Below is an example of the command: **Reset Units**

The Name is: **Reset Units**

Description: **Reset Units**

Macro: **^C^C\_-units;2;3;2;4;270d0'0";y;graphscr**

Small & Large Image has been created in the **Button Image Edit**.

