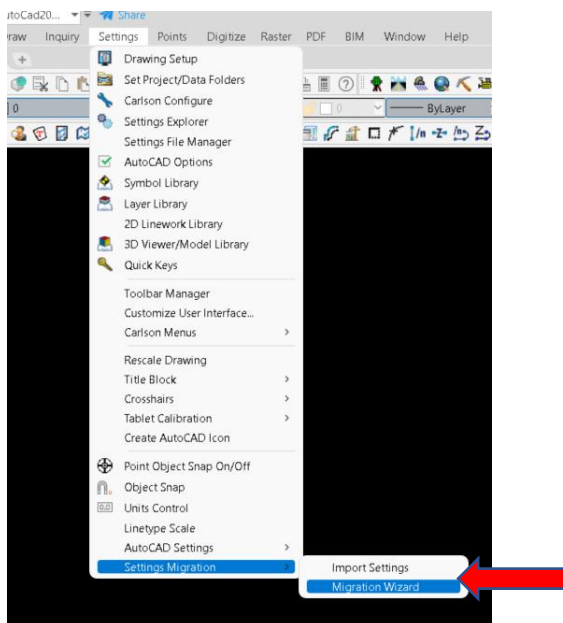


Table of Contents

1	Introduction	1
2	Settings.....	2
3	AutoCAD® Options.....	3
3.1	FILES:	4
3.1.1	Support File search Path	4
3.1.2	Printer Support File Path/	5
3.1.3	Template Settings	7
3.2	DISPLAY:	8
3.3	OPEN AND SAVE:.....	9
3.4	PLOT and PUBLISH:	10
3.5	SYSTEM:.....	10
3.6	USER PREFERENCE:	11
3.7	DRAFTING:.....	12
3.8	3D MODELING:.....	12
3.9	SELECTION:.....	13
3.10	Profiles	13
4	Conclusion.....	14

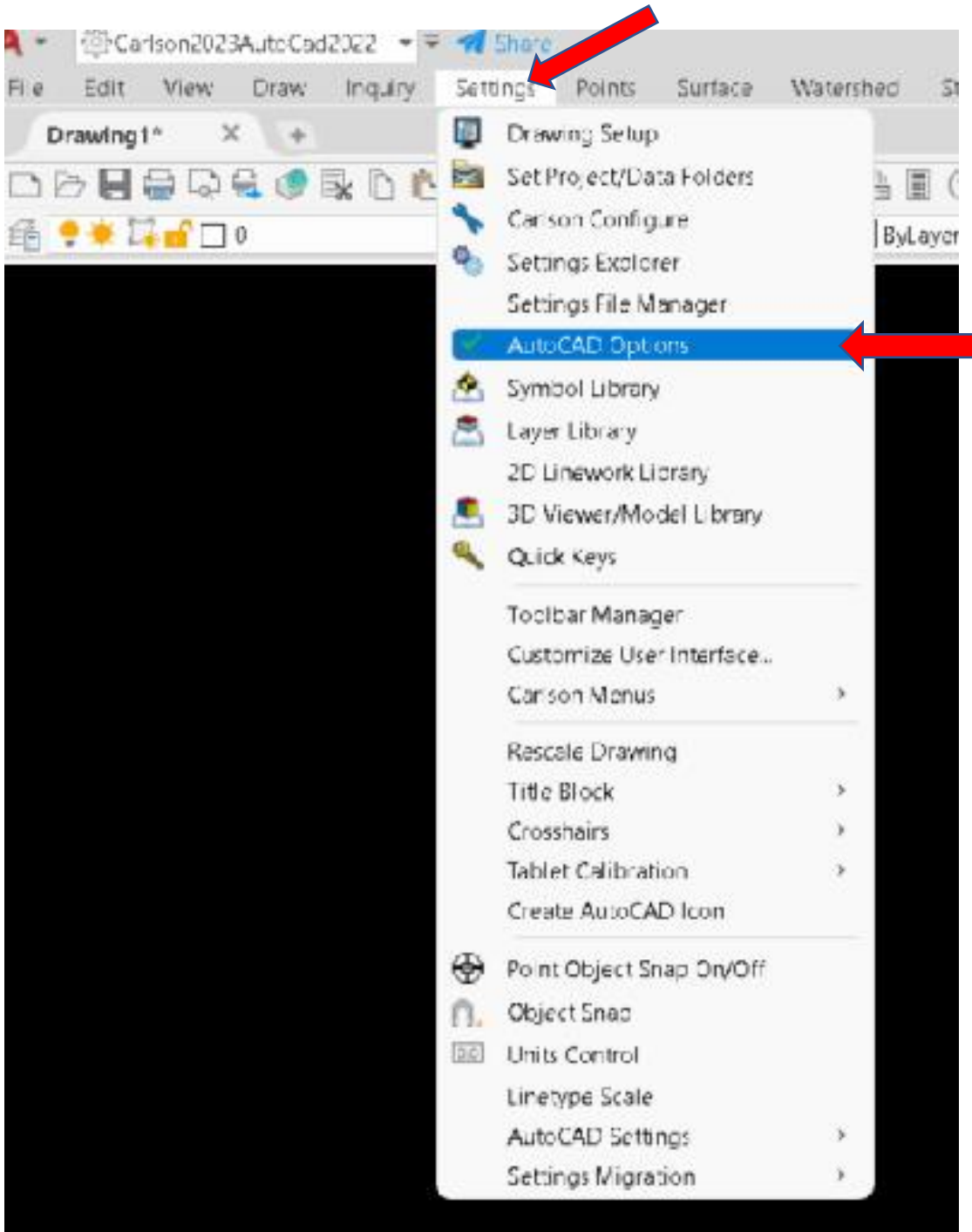
1 Introduction

AutoCAD® has default setting that can be changed. This is a beginner’s guide to change some of these setting to help it run more smoothly. As you advance, you can refer back to this guide to settings you may wish to change. If you upgrade either the Carlson modules, AutoCAD® or change computers, you can migrate these settings over using the ‘Migration Wizard’



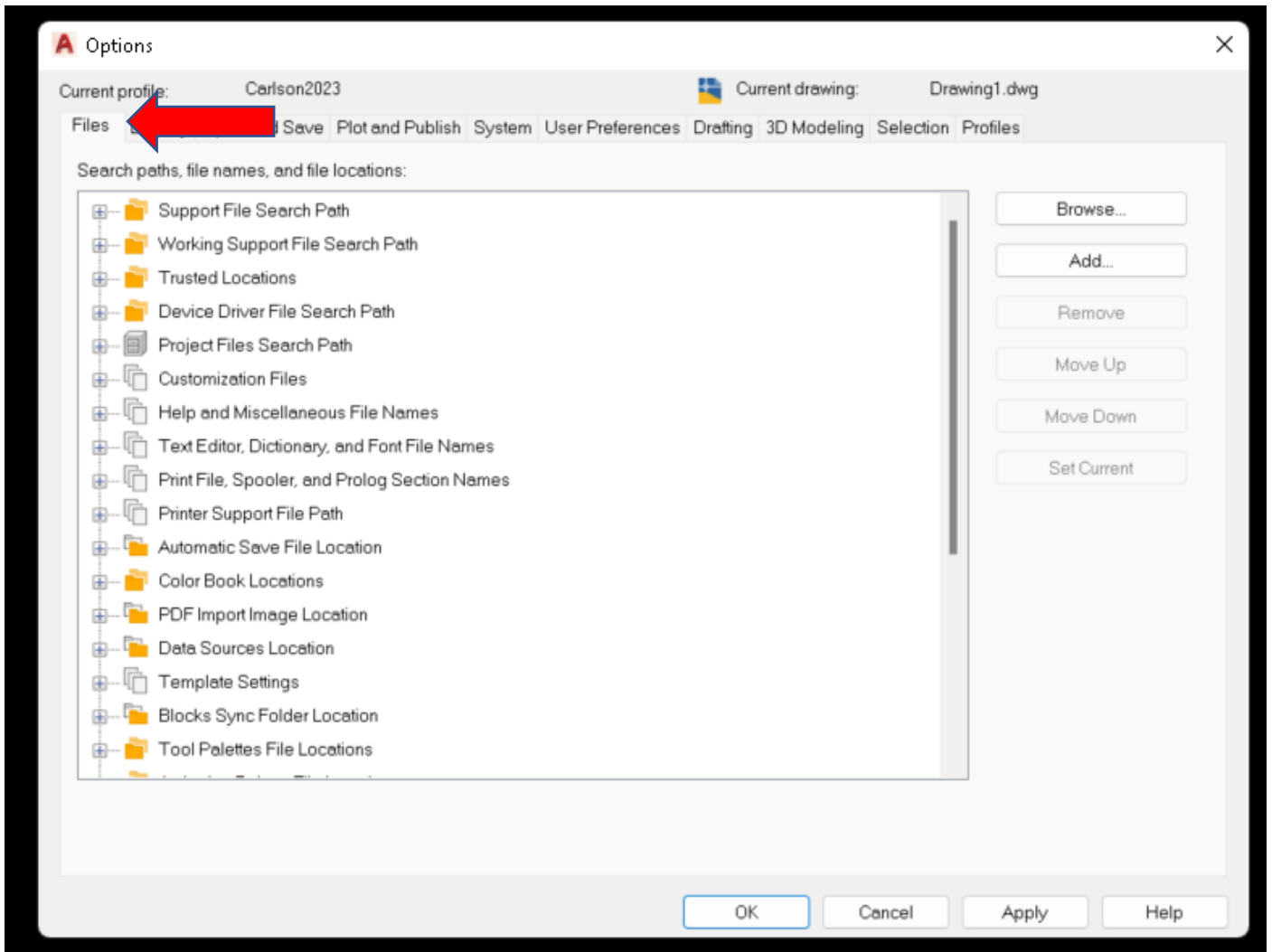
2 Settings

First you need to go into the **AutoCAD Options** which you will find under **Settings** in the drop-down menu.



3 AutoCAD® Options

We will work from left to right with the tabs.



3.1 FILES:

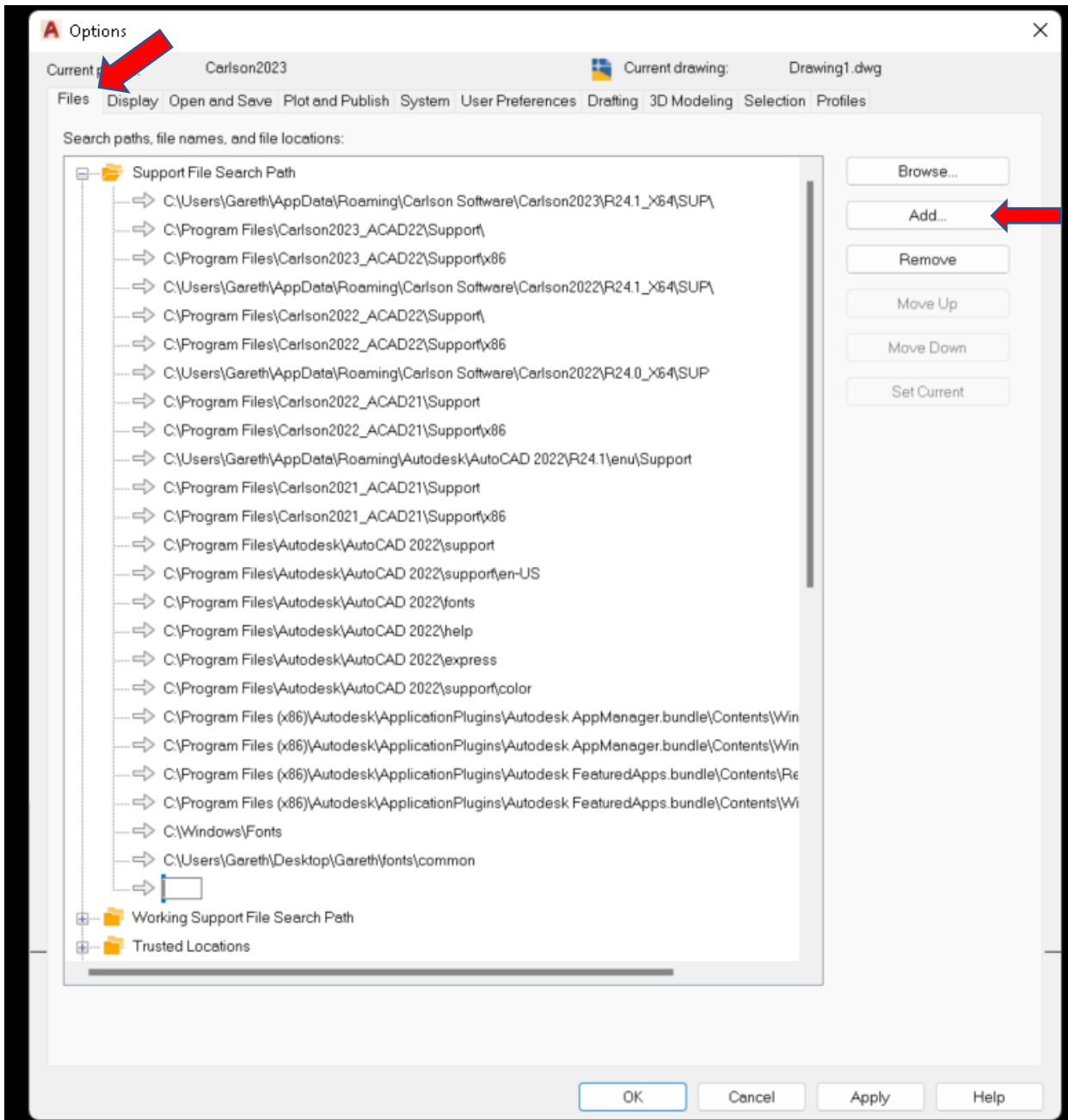
3.1.1 Support File search Path

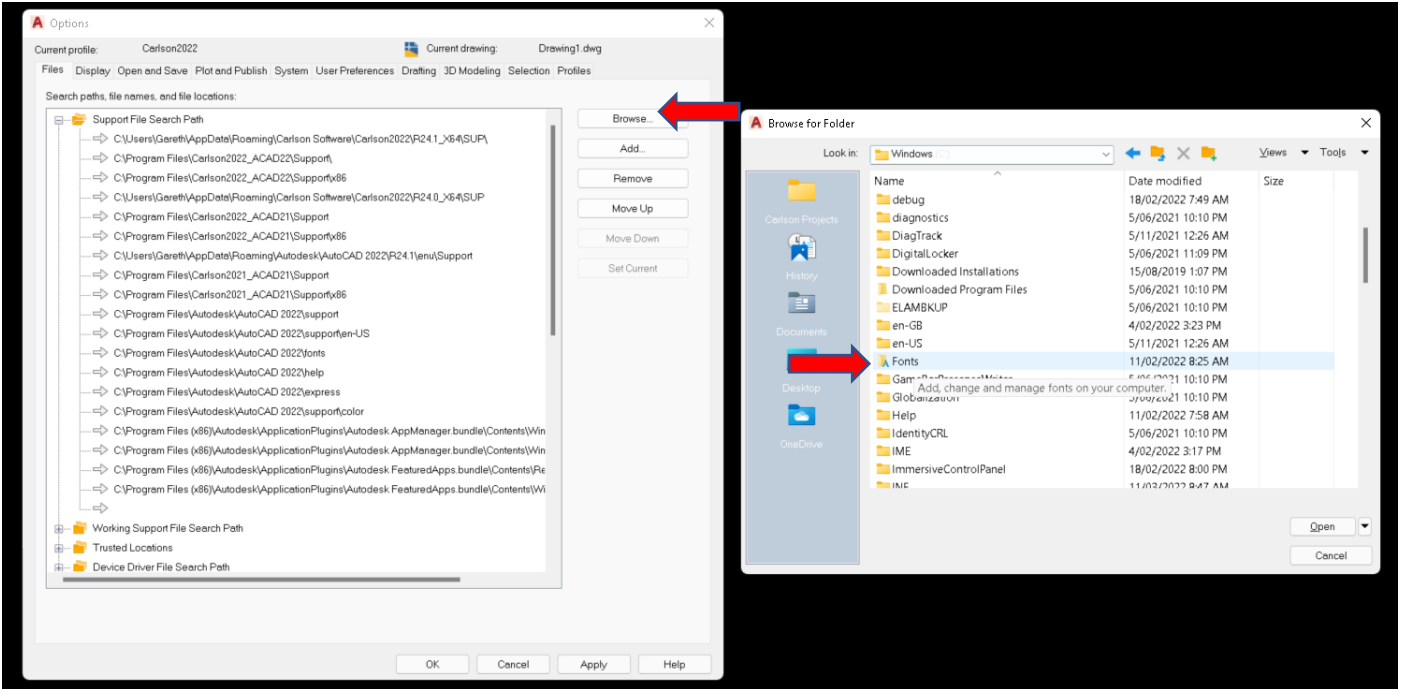
This is for any files that will be needed to create a drawing.

It is recommended that Window Fonts be added.

'Add' then 'Browse' to C:\Windows\Fonts

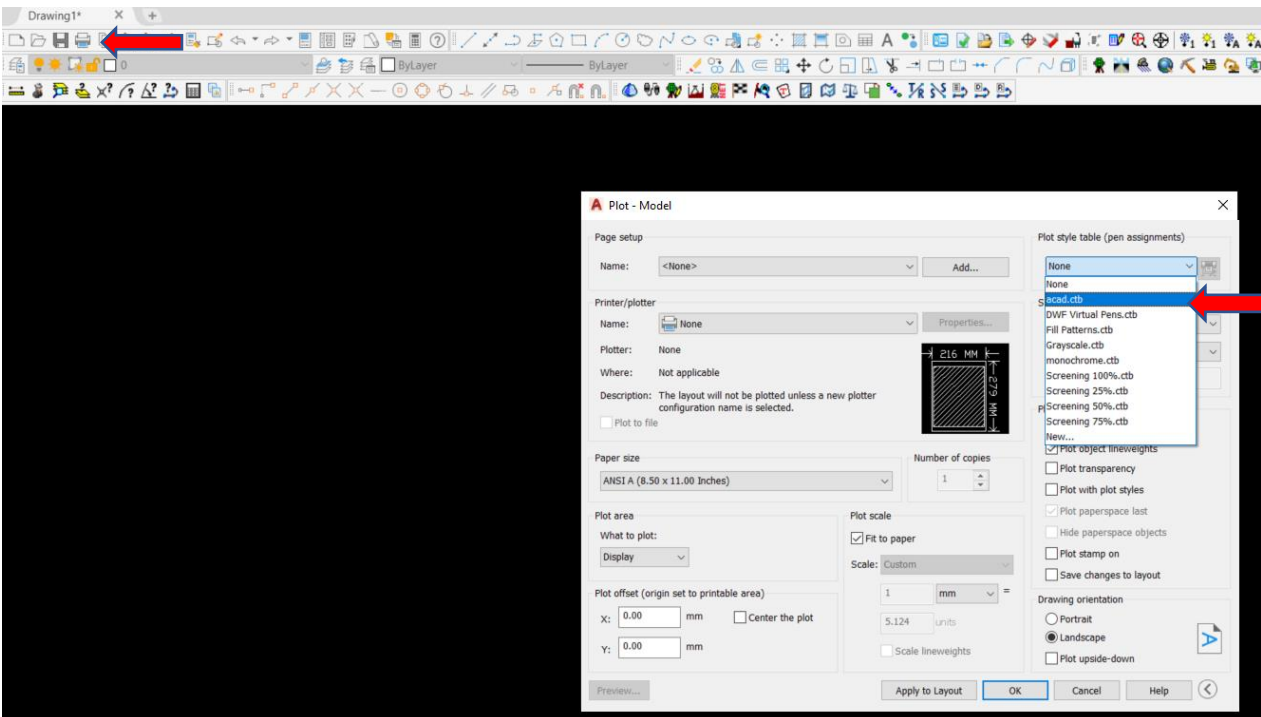
It is also worth setting up a folder on your computer to add fonts when they come from outside sources, this folder will also be need to be added under 'Support File search Path'.

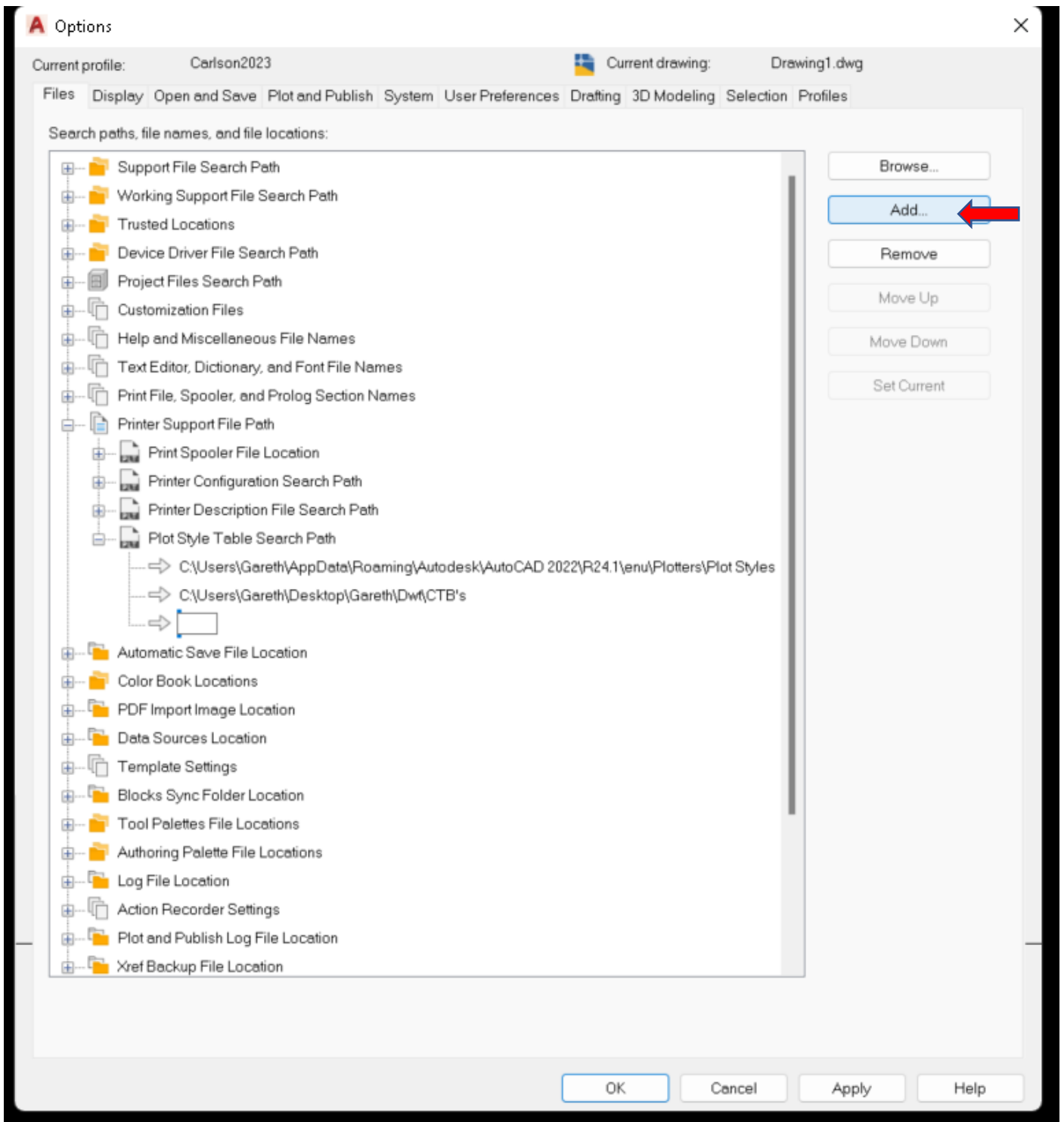




3.1.2 Printer Support File Path/ PlotStyle Table Search Path

When you need to print/plot a drawing a .ctb (pen assignments) file is required, there are default ones available (see below) but as you advance you can create your own unique plot styles for certain drawing types. It is recommended that you create a folder on your computer that these .ctb file can be kept. Outside sources may also provide a .ctb file for you so that the drawing they supplied can be printed the same way as they intended, these plot styles should also be stored in this folder which will need to be added to the 'Plot Style Table Search Path' (see below).

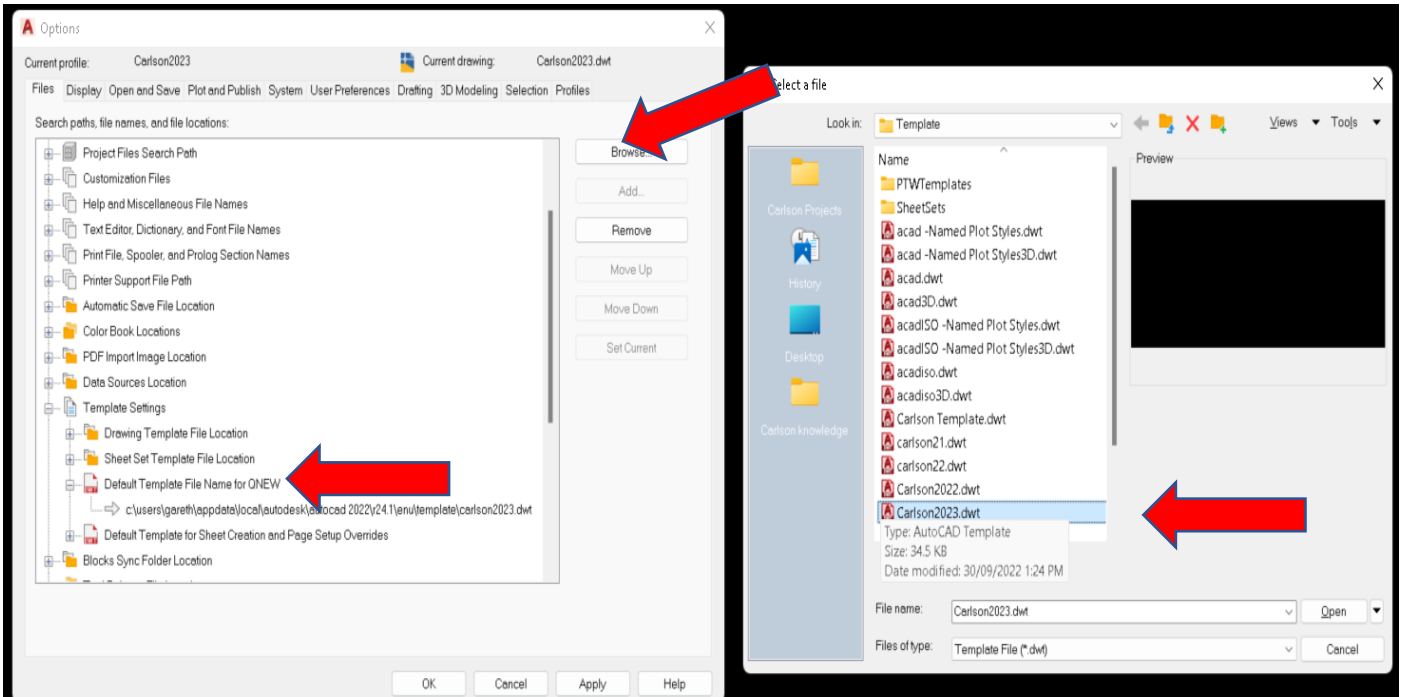




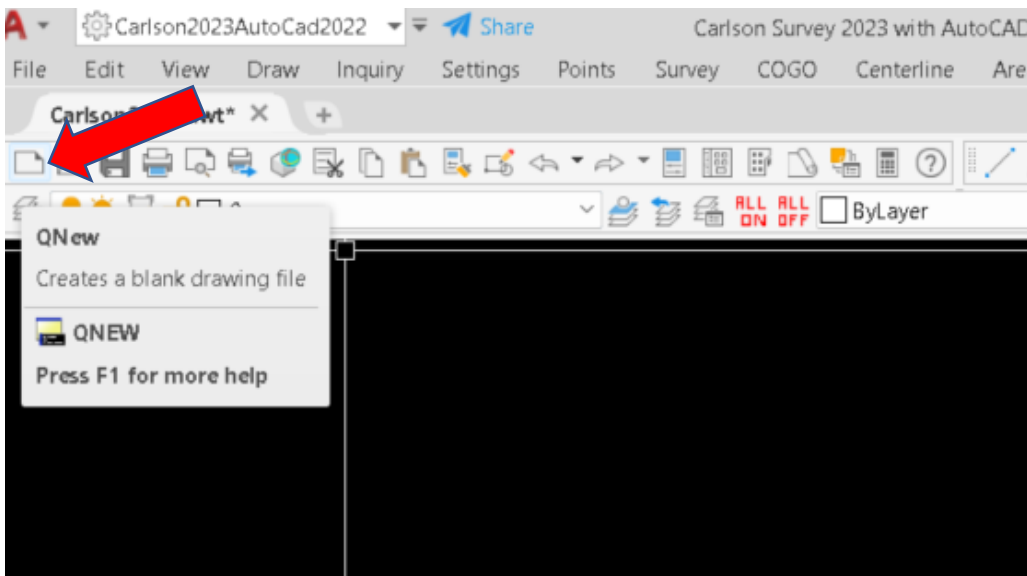
3.1.3 Template Settings

Default Template File Name for QNEW

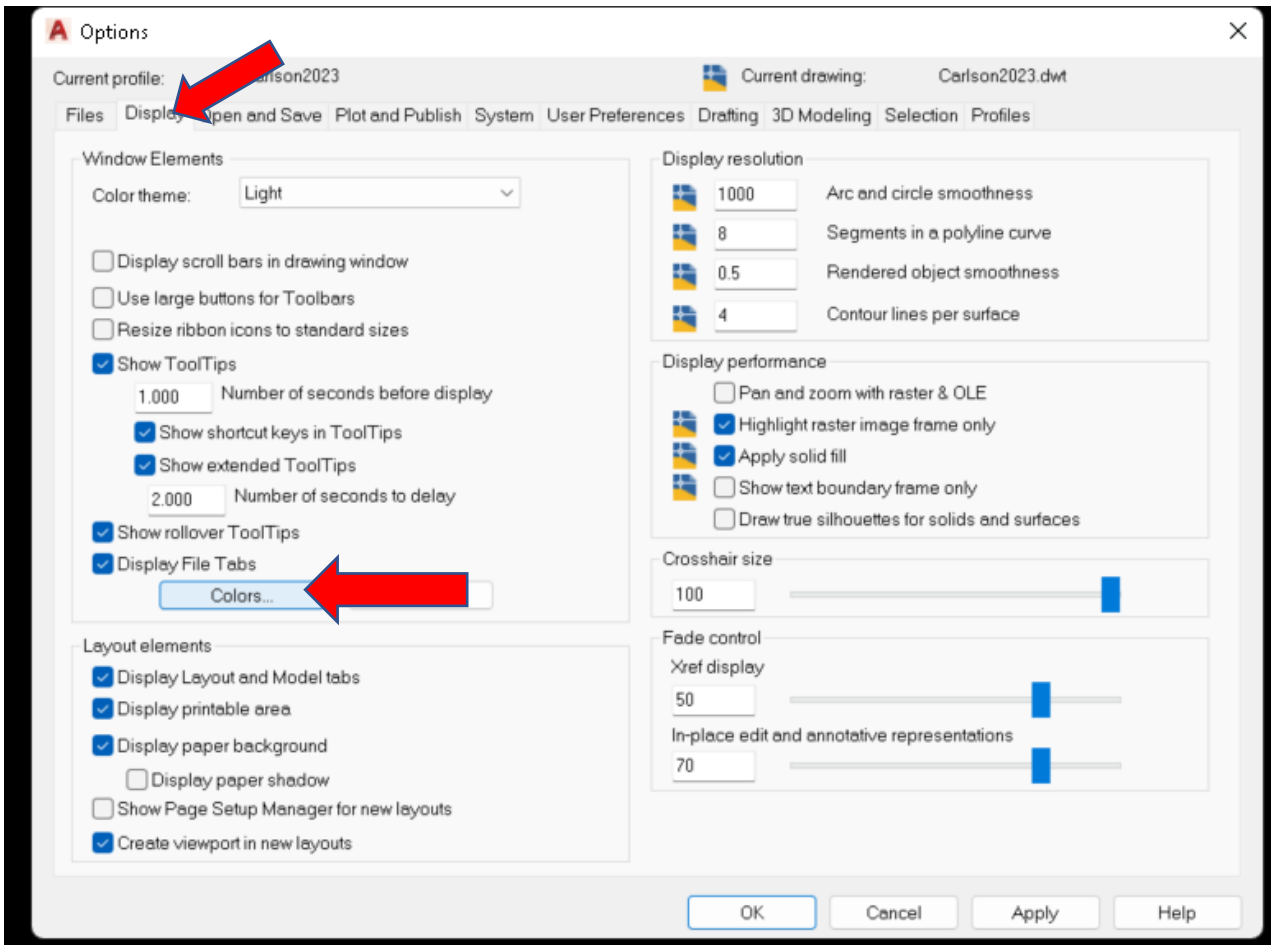
This is the area where you can add a standard drawing template for use with the **QNEW** button or `qnew` in the command line. It is recommended that you start with a blank drawing, make the amendments you require e.g. set units, then save this as a `.dwt` (template drawing) somewhere on your computer, then add this location.



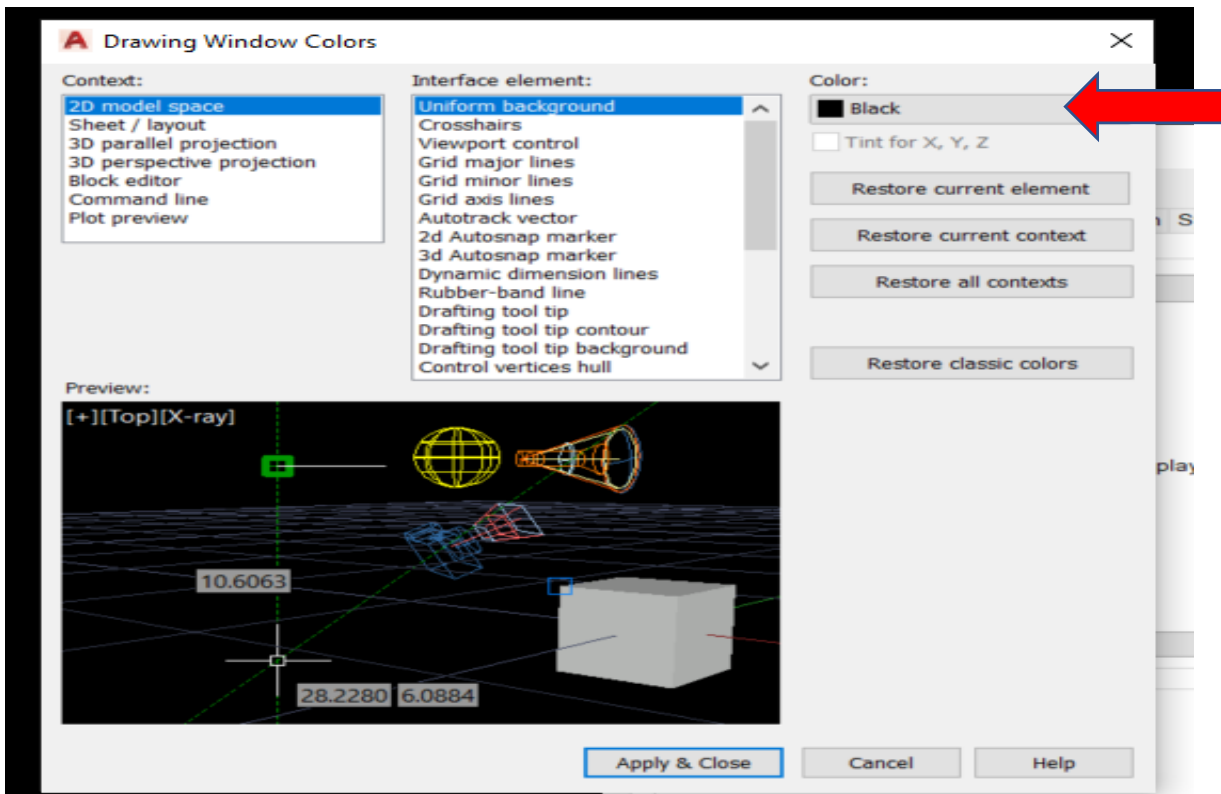
Here is the QNew button that creates a blank drawing set to those defaults.



3.2 DISPLAY:



It may be preferable to change the colours to Black & White depending on your computer screen resolution.



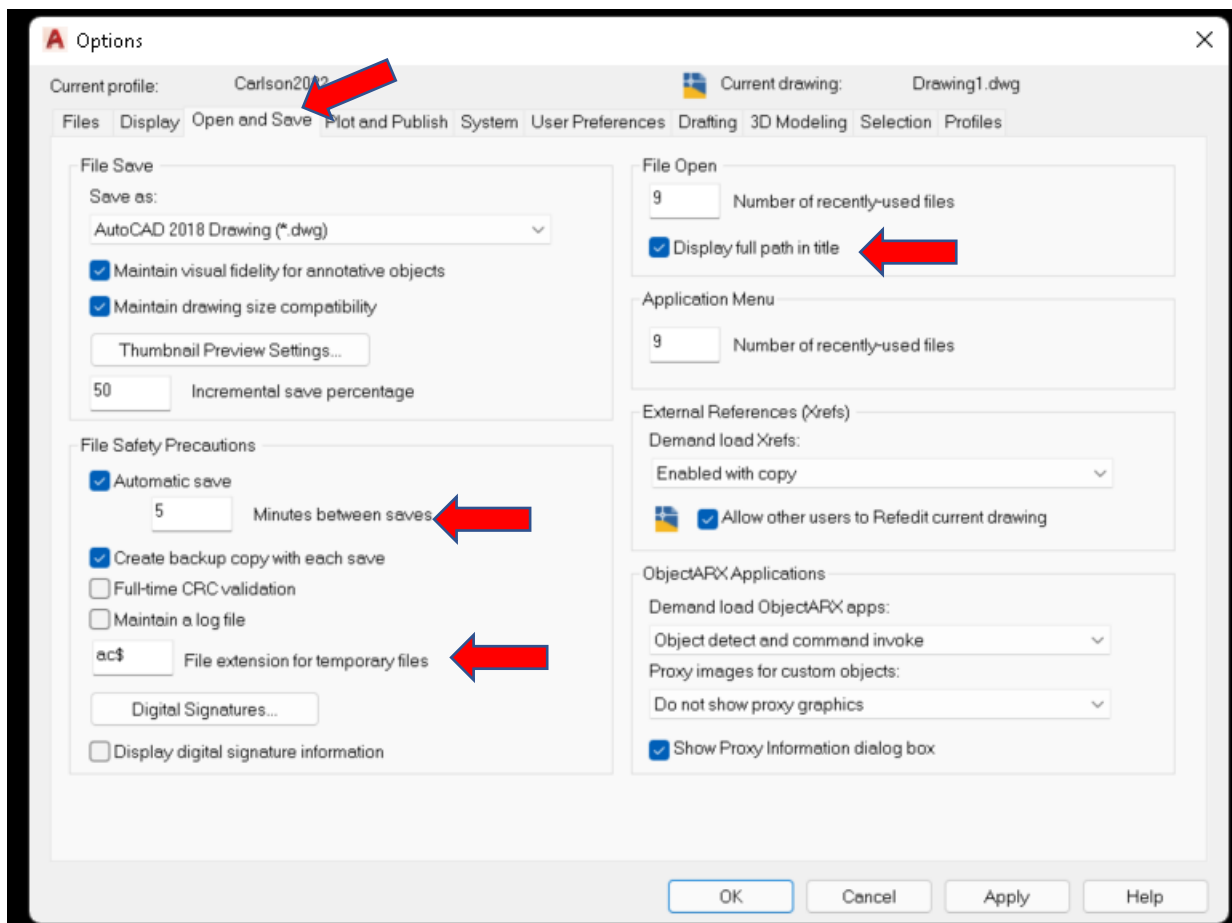
3.3 OPEN AND SAVE:

Take care as to which version you save your drawings in as others may not be able to open it if it's too recent, if you save it to 2018 and they work with 2010 they will have difficulty opening your drawing.

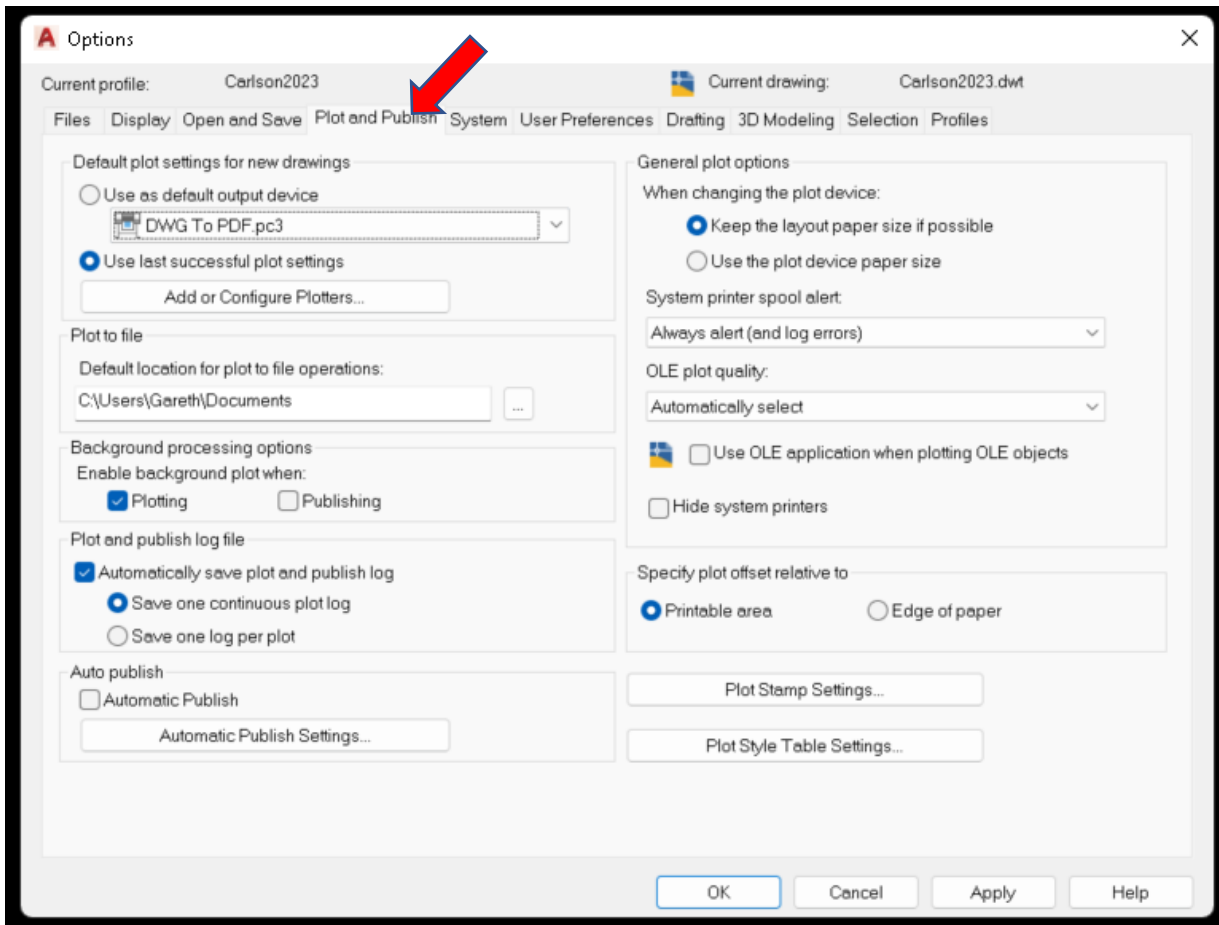
Other important fields here are 'Number of recently-used files' set this to 9

'Display full path in title' ticked

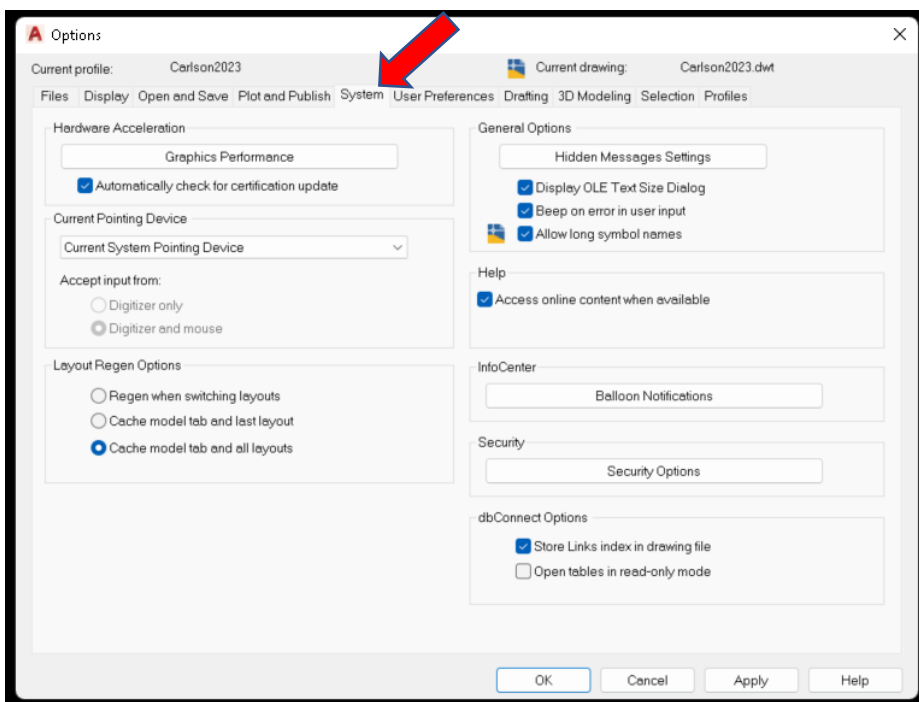
'Minutes between saves' set to 5, this will help minimise the amount of work lost if you have a crash. Temporary saved drawing can be found under Windows(C)>users>Your Name>AppData>Local>Temp they will have a .sv\$ extension so will need to be changed to a .dwg extension for viewing.



3.4 PLOT and PUBLISH:



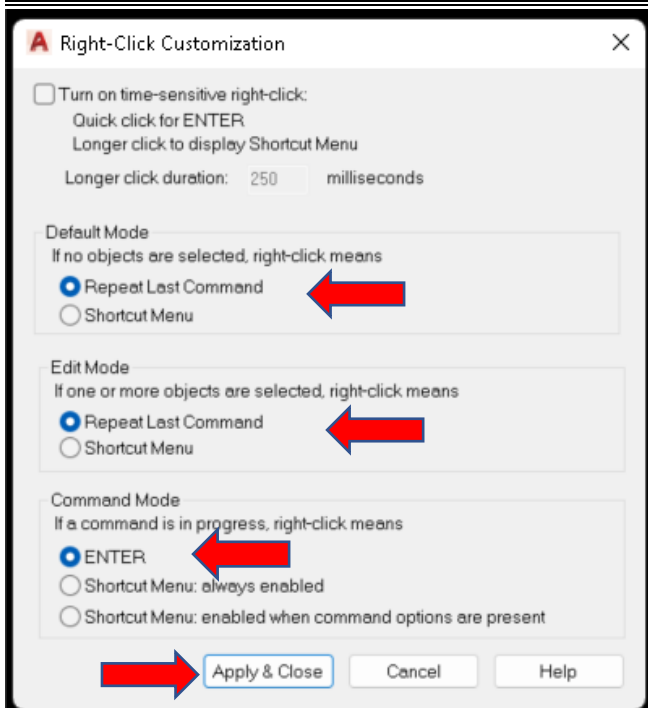
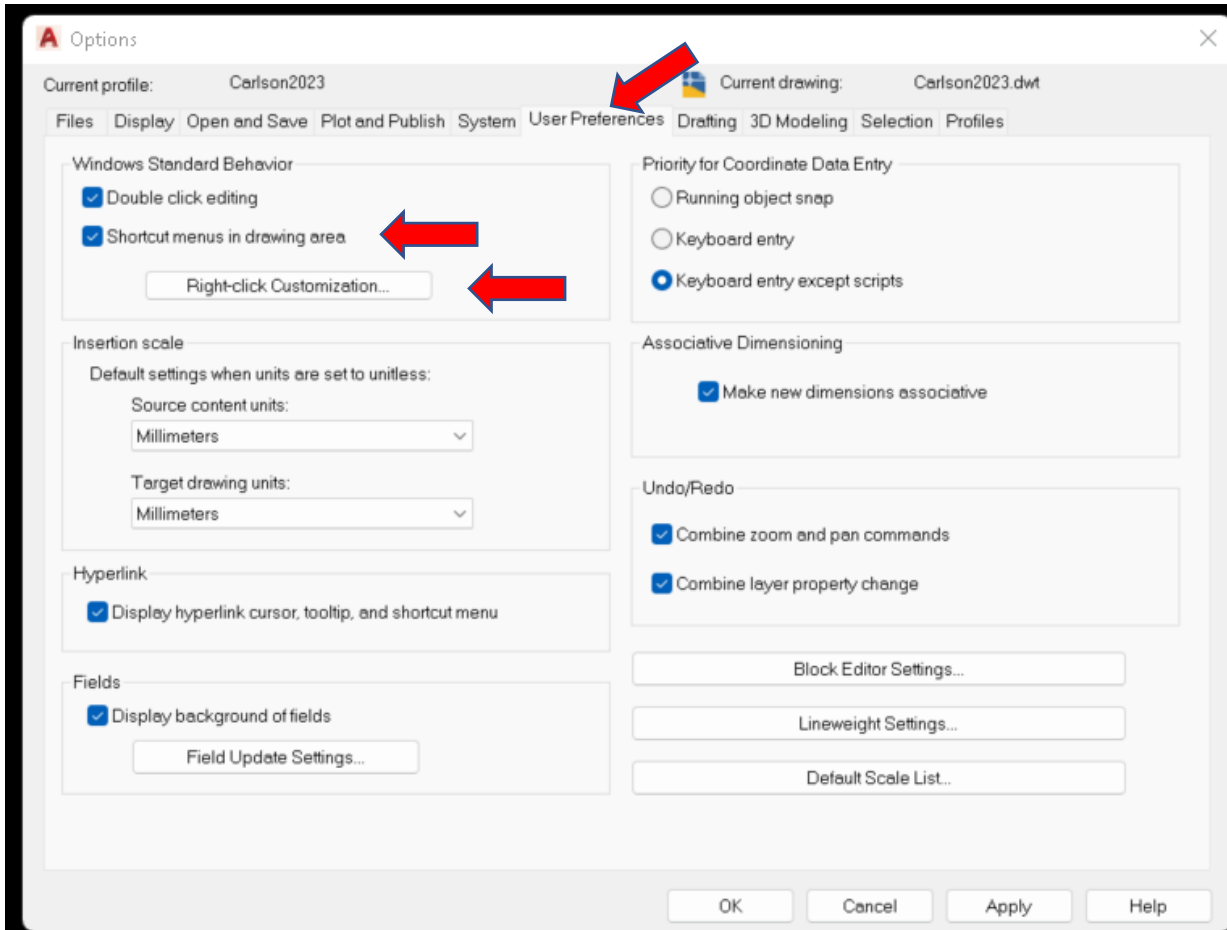
3.5 SYSTEM:



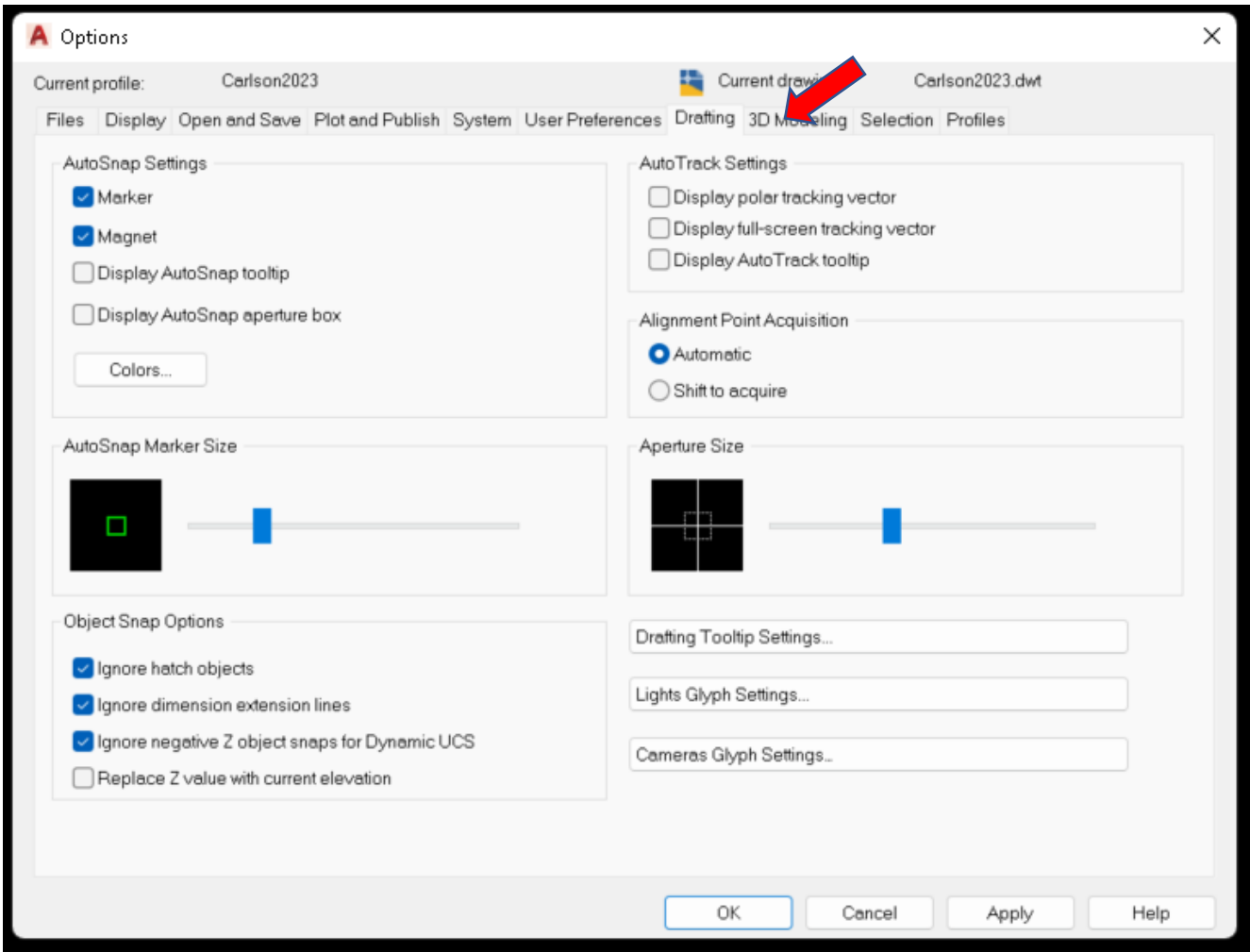
3.6 USER PREFERENCE:

Tick **'Shortcut menus in drawing area'** then select **'Right-click Customization'** and then select **'Repeat last command'**, **'Repeat last command'**, **'ENTER'**. - **Apply and Close**

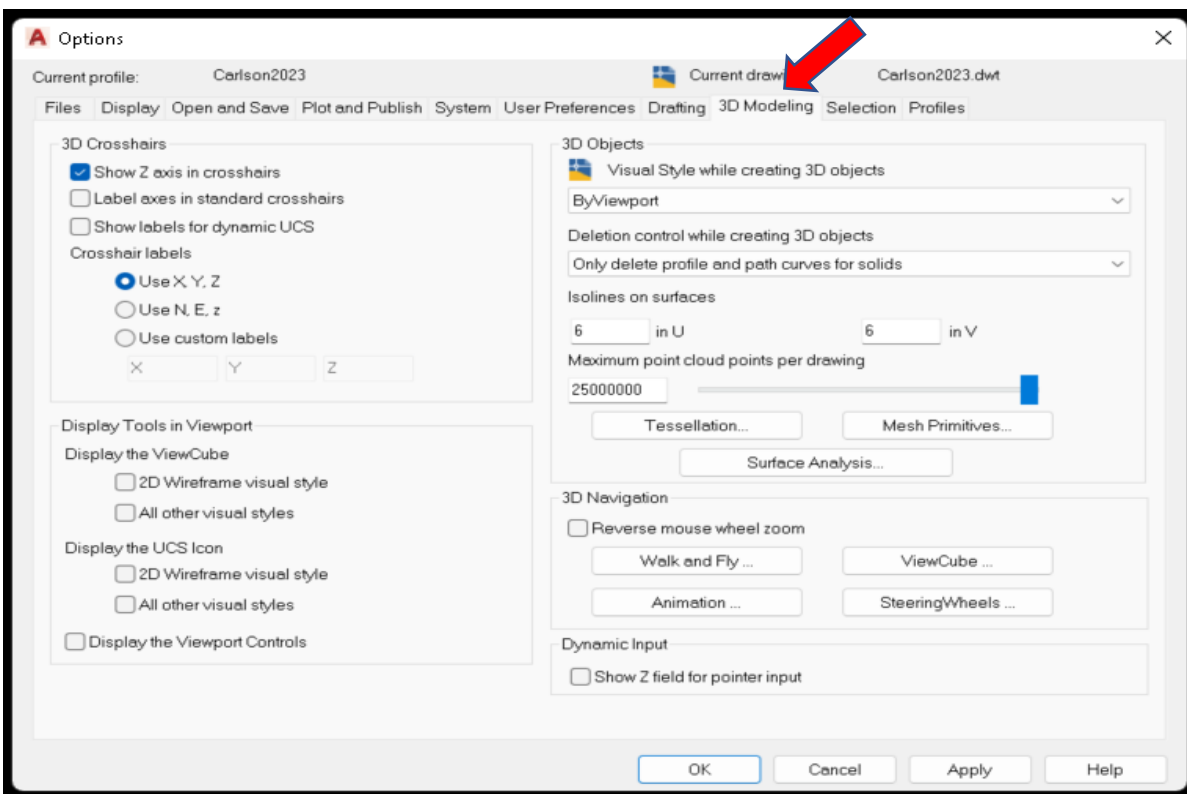
This is extremely useful and saves time.



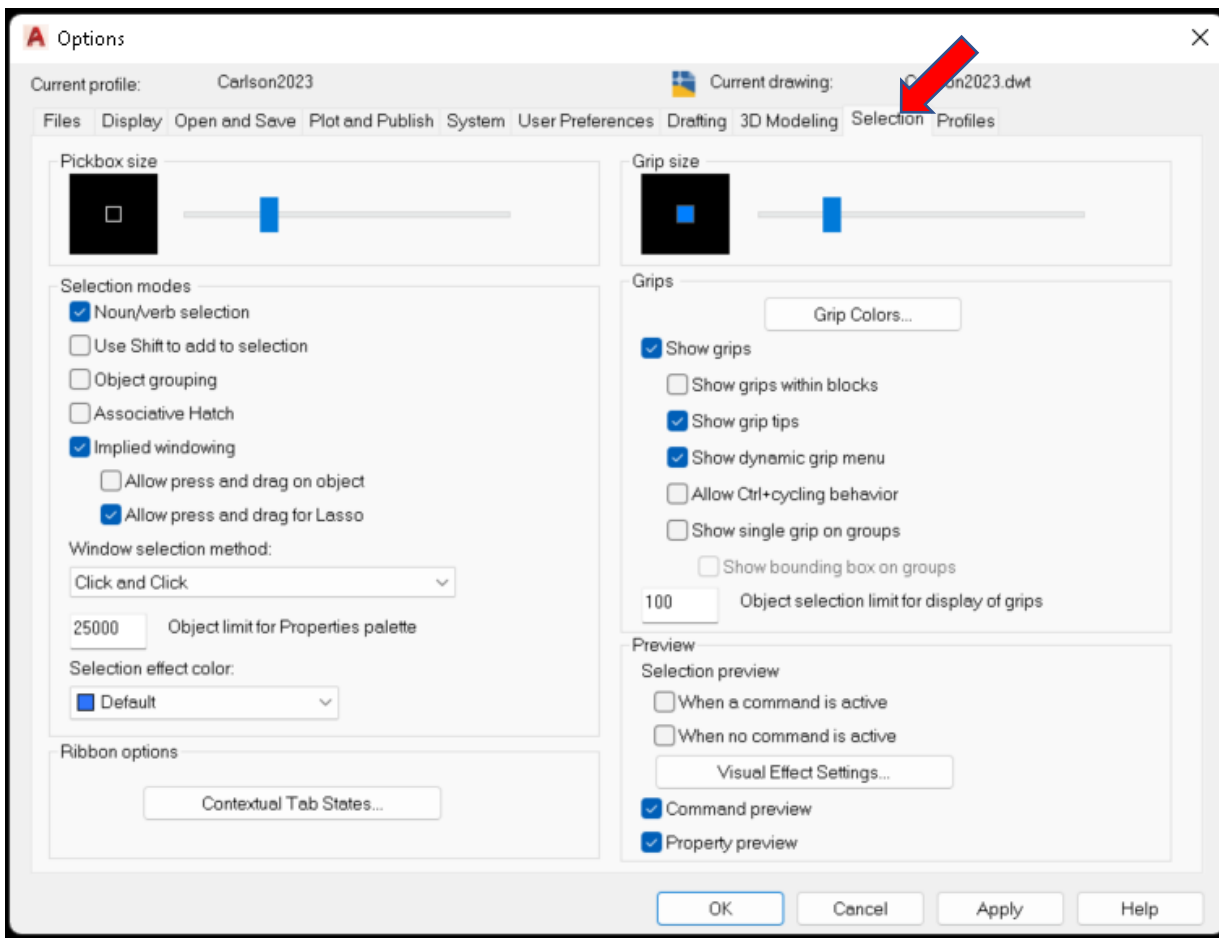
3.7 DRAFTING:



3.8 3D MODELING:

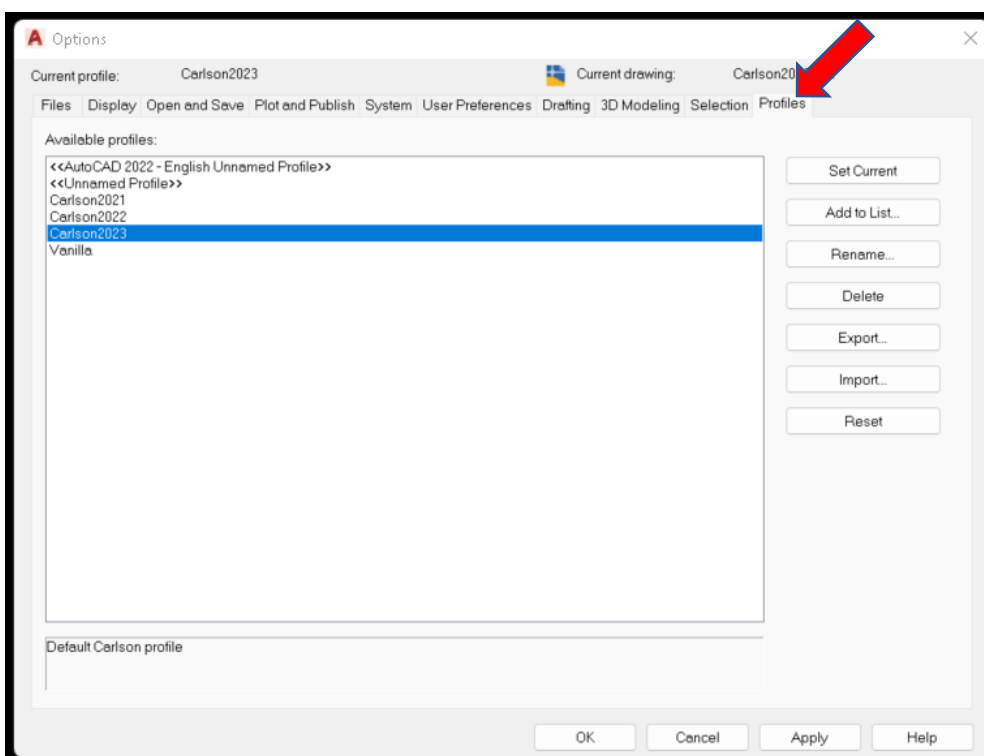


3.9 SELECTION:



3.10 Profiles

You can save previous profiles and swap when needs be.



4 Conclusion

Of course, all these settings are personal preferences and will need to be amended to your style of working. Once your AutoCAD settings are set you can move onto the Carlson settings and then be migrated when required.