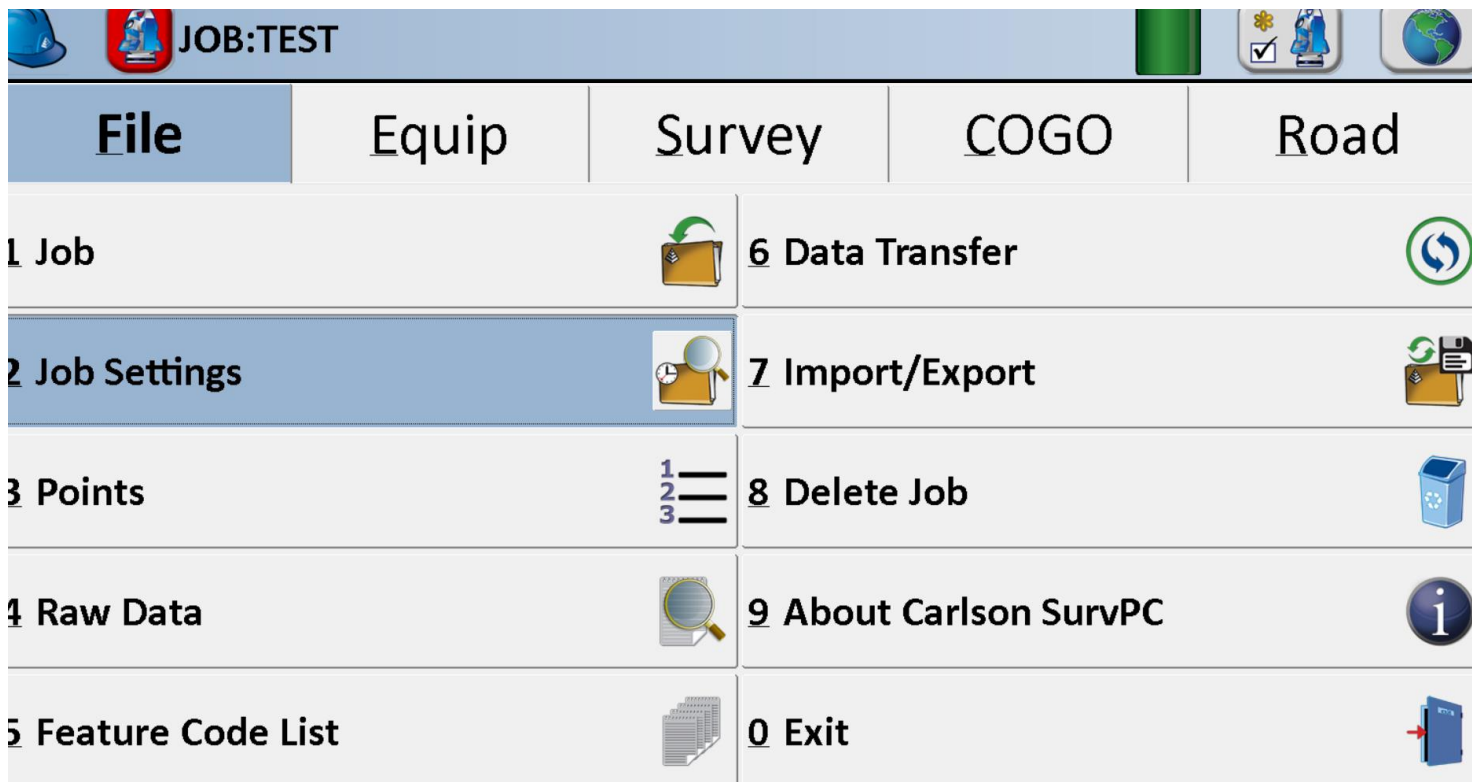


Table of Contents

1	Set up Projection.....	1
2	System.....	2
3	Format.....	4
4	Raw Data-PRJ file	4
5	Map View to import SHP file(s).....	5

1 Set up Projection

Under the **FILE** tab, **Job Settings** needs to be selected.



2 System

Next, select the **System** tab and confirm that the current settings are in metric and the Projection is for the area the job is in, if needs be, go to the **Edit projection List** and select from the Projections available, for this example AUSTRALIA/GDA94/MGA zone 50 E114-120

Job Settings [✓] [✗]

New Job	System	Format	Options	Stake
Distance:	Metric			
Display Input:	Decimal Meters			
Angle:	Degrees, Minutes, Seconds	Time:	Local	
Lat/Lon:	Degrees, Minutes, Seconds	Date:	DD/MM/YYYY	
Zero Azimuth:	North	Edit Projection List ←		
Geoid:	None Set			
Projection:	USA/NAD83/AL East			

or load one from the list. If the projection is not available the go to the **Add Predefined**

Coordinate Projection [✓]

Name	Source
AUSTRALIA/GDA2020/MGA zone 56 E150-156	Carlson
AUSTRALIA/GDA94/MGA zone 55 E144-150	Carlson

Buttons: Delete, View, Add Predefined ←, Add User Defined



Select Australia from the drop-down menu

Coordinate Projection [✓] [✗]

Country: USA/NAD83

- USA STATE MI
- USA STATE OR
- USA Territories
- USA Las Vegas
- ANGOLA
- AUSTRALIA**
- AUSTRIA
- ARGENTINA
- BARBADOS
- BELGIUM
- BOSNIA
- BRAZIL


Select Zone 50 (in this case) and click the green tick

Coordinate Projection  

Country: AUSTRALIA

GDA94/MGA zone 49 E108-114
GDA94/MGA zone 50 E114-120
GDA94/MGA zone 51 E120-126
GDA94/MGA zone 52 E126-132
GDA94/MGA zone 53 E132-138
GDA94/MGA zone 54 E138-144
GDA94/MGA zone 55 E144-150



Select Zone 50 (in this case) and click the green tick.

Coordinate Projection 

Name	Source
AUSTRALIA/GDA2020/MGA zone 56 E150-156	Carlson
AUSTRALIA/GDA94/MGA zone 55 E144-150	Carlson
AUSTRALIA/GDA94/MGA zone 50 E114-120	Carlson

Buttons: Delete, Add Predefined, View, Add User Defined

Click the green tick

Job Settings  

New Job | **System** | Format | Options | Stake

Distance: Metric

Display Input: Decimal Meters

Angle: Degrees, Minutes, Seconds | Time: Local

Lat/Lon: Degrees, Minutes, Seconds | Date: DD/MM/YYYY

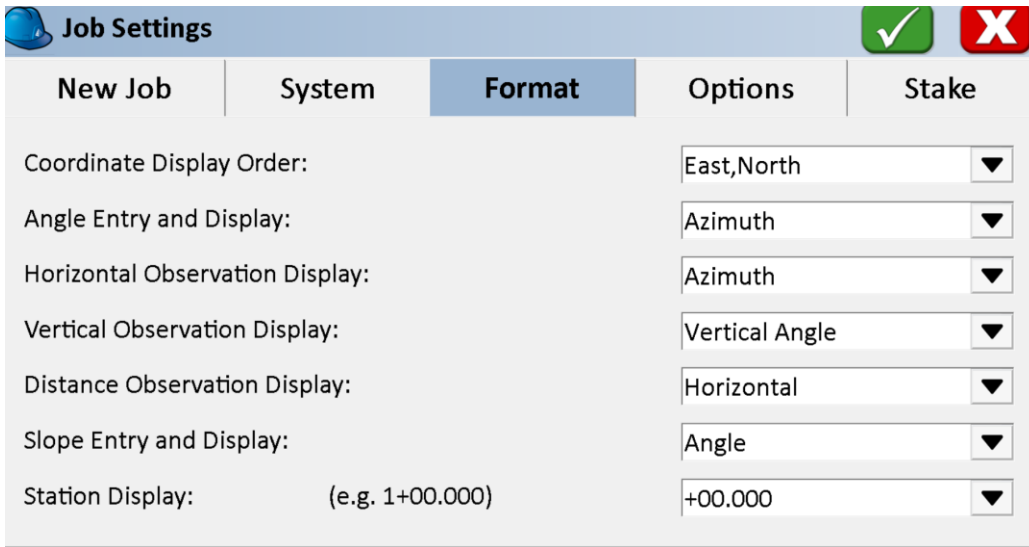
Zero Azimuth: North

Geoid: None Set | Edit Projection List

Projection: AUSTRALIA/GDA94/MGA zone 50 E114-120

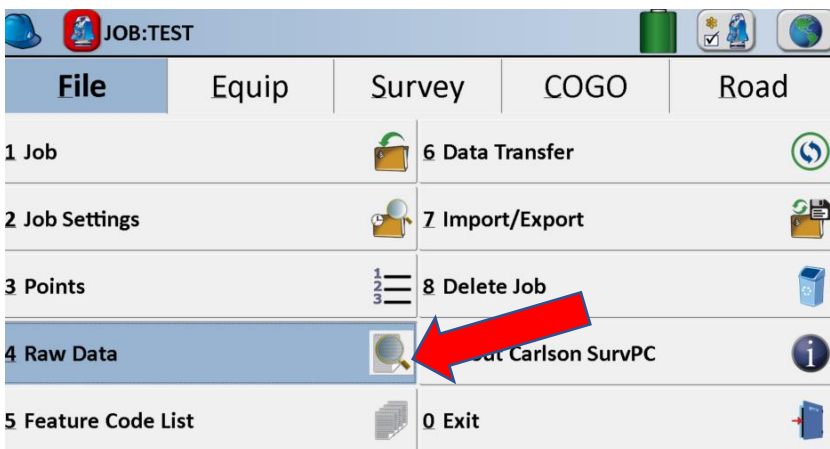
3 Format

While in **Job settings** it is advised that the **Format** be checked.

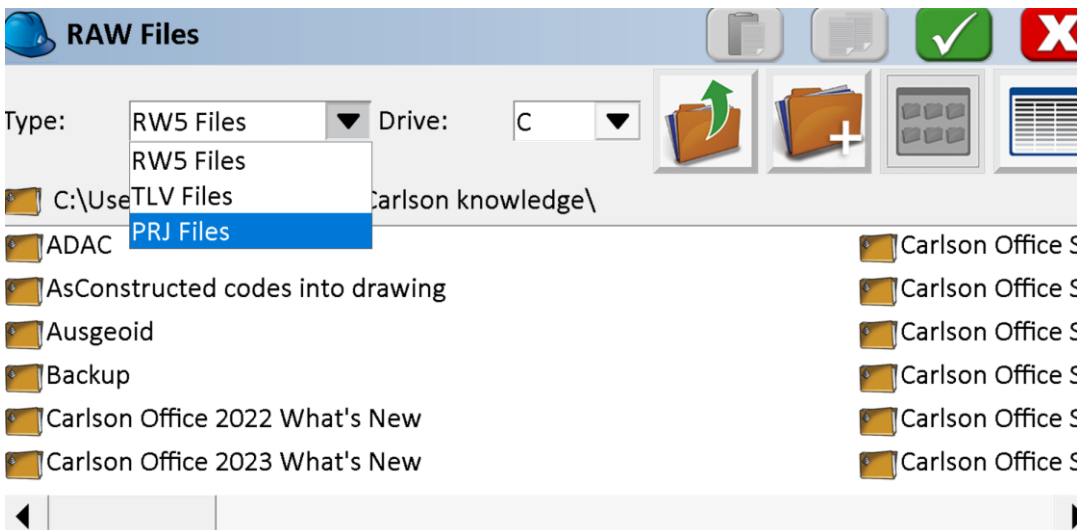


4 Raw Data-PRJ file

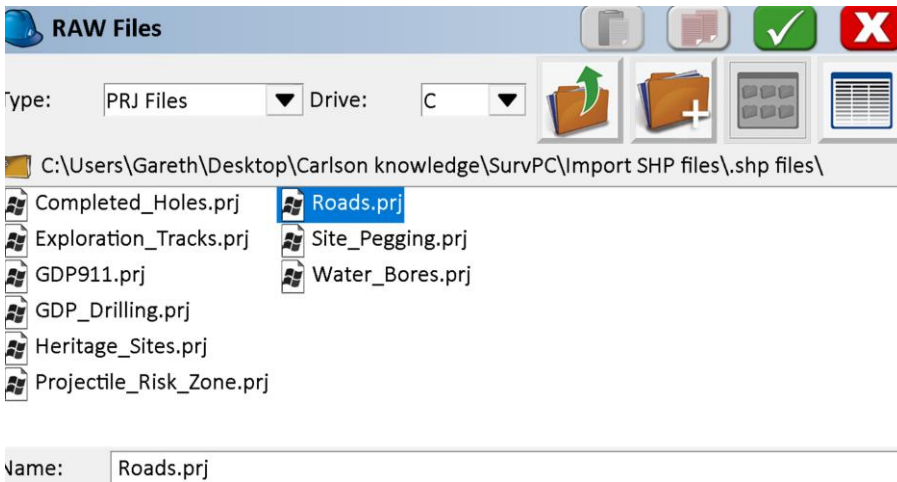
Under the **File** tab, select **Raw Data**



Select PRJ Files from the drop-down.



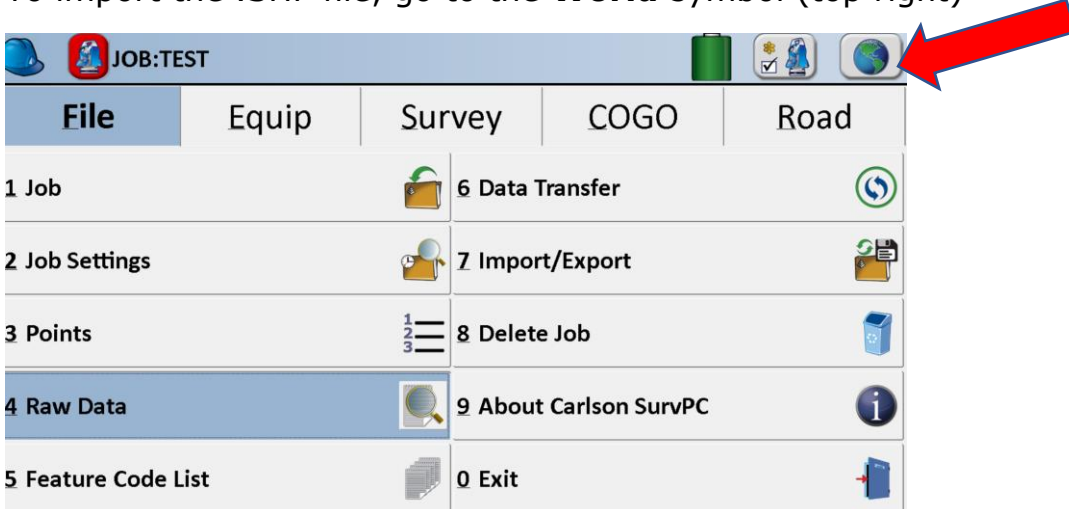
Now select the .PRJ file associated with the job.



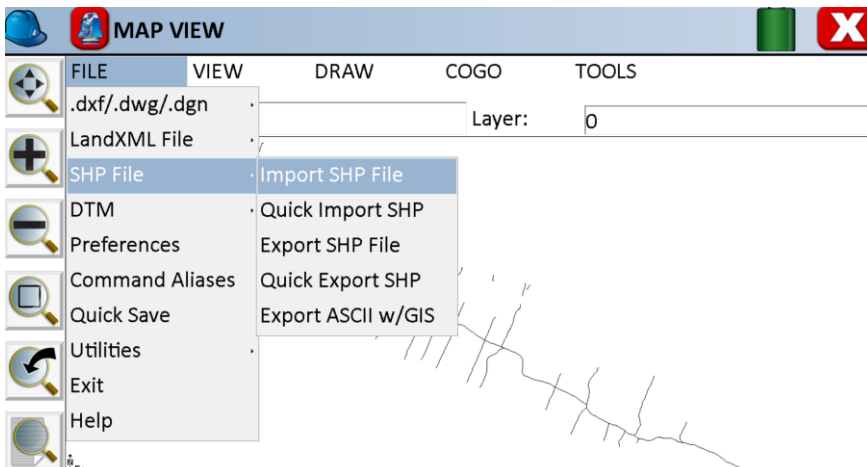
Click the green tick.

5 Map View to import SHP file(s)



To import the .SHP file, go to the **World** symbol (top right)



Select **File\SHP File\Import SHP File** and select the file, for multiple files this will need to be repeated.




Each time a .SHP file is selected a **Code Name** may be required, then chlick the **green tick** and once the process has completed, then the **orange arrow**.


Import from SHP  


Current SHP:


Type:ARC

Overwrite Existing Point IDs
 Use New Point IDs



Attribute > Point ID:  GIS

Attribute > Point Desc:  GIS

Layer: 

Code Name: 

The .SHP files should now be loaded.

MAP VIEW  

FILE VIEW DRAW COGO TOOLS

Cmd: Layer:

