

Table of Contents

1	SETTINGS SERVER.....	1
2	USING THE SETTINGS SERVER.....	3
2.1	Initial Setup	3
2.2	Configuration	3
2.3	How does this work?.....	7

1 SETTINGS SERVER

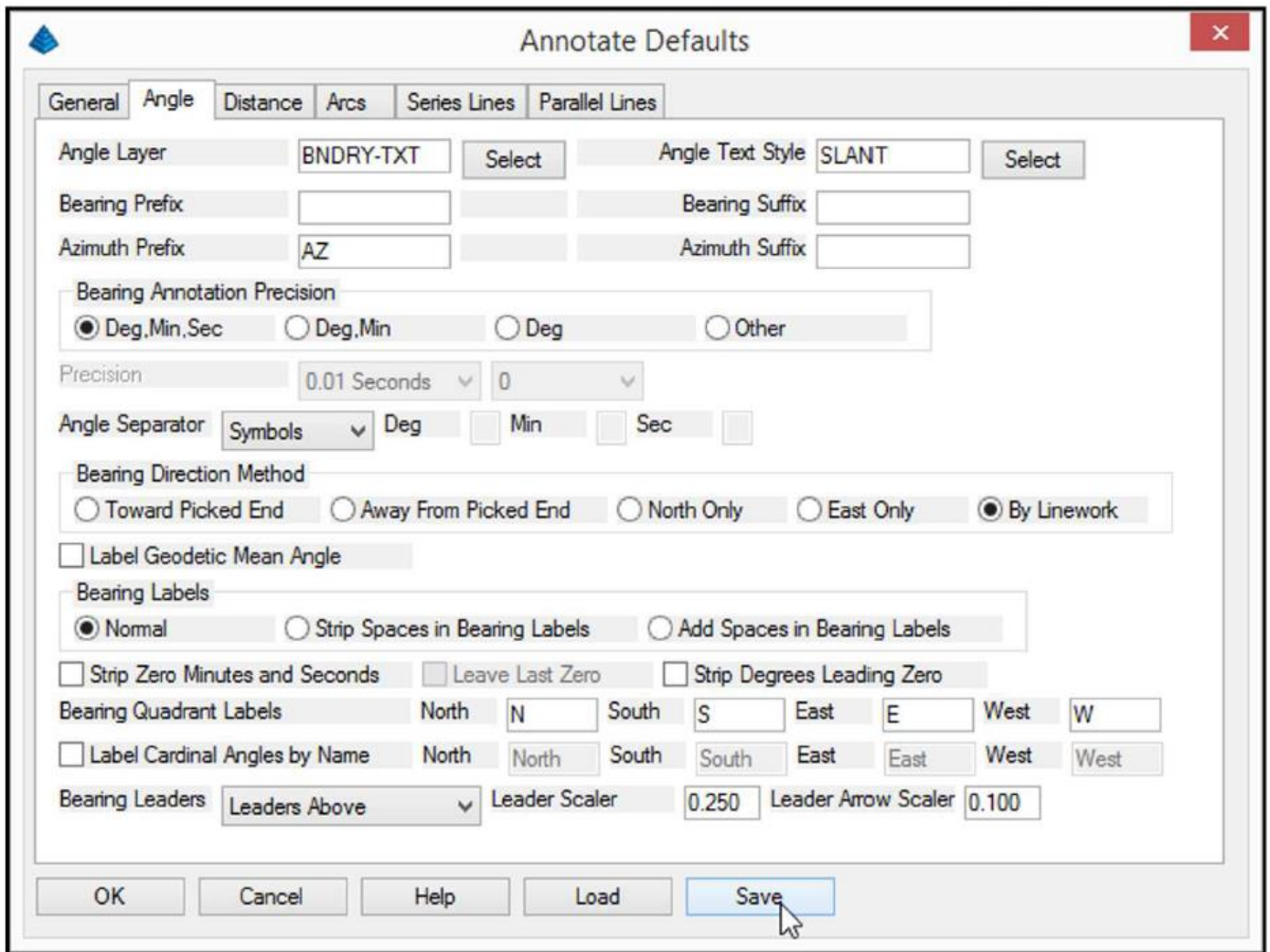
The Carlson Setting Server is designed to allow user control over a variety of the settings that are used throughout Carlson Software. The basic use of this feature is to create a folder or folders on a company server that contains all of the various configuration files, default settings, symbols, linetypes etc. that need to be used throughout the company. The Settings Server then distributes those files to any computer logged into the server either automatically or manually. Of course, there are multiple ways to control this distribution and ways of ensuring limited access to those files.

When first installing Carlson Software and accepting the defaults "as is", various support and settings files are installed. These files effect the way Carlson operates and looks as you add data and draft a plan. Files that control annotations, triangulations settings, field to finish codes, profile settings and general configurations are all examples of potential files that could be shared across a network that would help ensure consistency in both the underlying data and appearance of a project. By default, Settings Files are stored in the folder **C:\Carlson Projects\Settings**. These files are for basic setup and configuring Carlson.

Examples of Settings files:

- CFG Configuration File
- FLD Field to Finish Code Table
- PFS Profile Settings
- ADF Annotate Defaults
- AAN Auto Annotate Settings
- TRI Contour and Surface Model Settings

In most module dialog boxes you will see an option to Save or Load an external file containing settings such as those listed above.



If you save these files on a server, anyone that has access can simply load those files as need. The purpose of the Settings Server is to push those files out to users in a more efficient manner and/or make using the settings contained therein mandatory.

The Support Files may be placed in various locations depending on which platform you are running but it may be in a very deep location like.

C:/Users/Owner/AppData/Roaming/CarlsonSoftware/Carlson2018/R22.0_X64/SUP which is even more of a reason to consider using the Settings Server.

Examples of Support Files:

- DWG Symbols
- LIN Linetypes
- PAT Hatch Patterns
- DWT Drawing Template

You may also make use of the **User** Folder as well as a custom or **Other** Folder.

This guide does not cover all of the possibilities for setting up and implementing Carlson settings. It is however a working example of an effective company application for maintaining some in-house standards. Start simple, get it working and then grow from there.

2 USING THE SETTINGS SERVER

2.1 Initial Setup

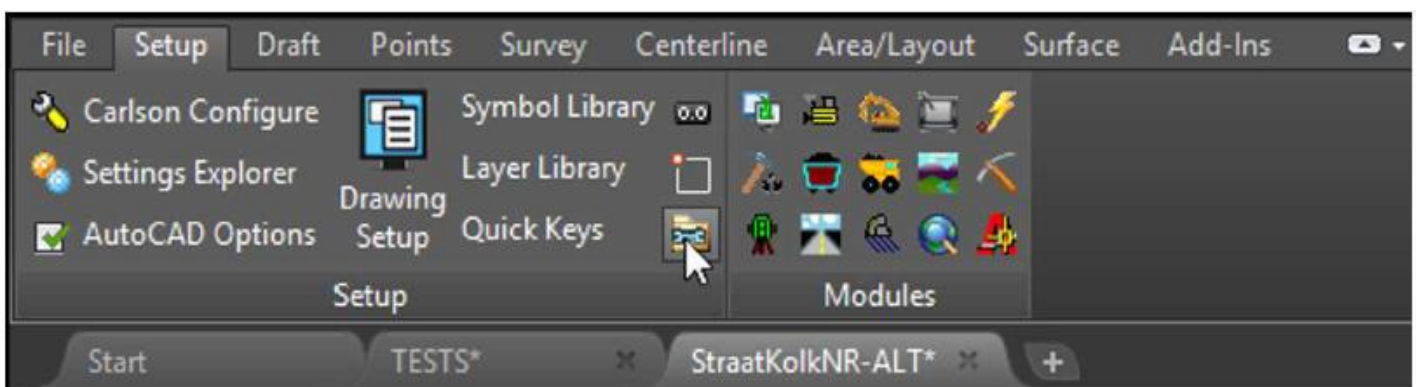
Step one is to decide what standards you would like to implement company wide. This sounds obvious but more times than not, company managers have not really considered just how or why a set of standards should be created or used. These can be very simple. For example, annotation defaults for bearings, distances and curve information can be saved in an ADF file from the annotations default dialog box or the Carlson configuration file can be saved as a CFG from the Configure dialog box. Once you have made a decision on what standards or defaults you would like to implement, save the necessary files and create a folder on the server to hold them.



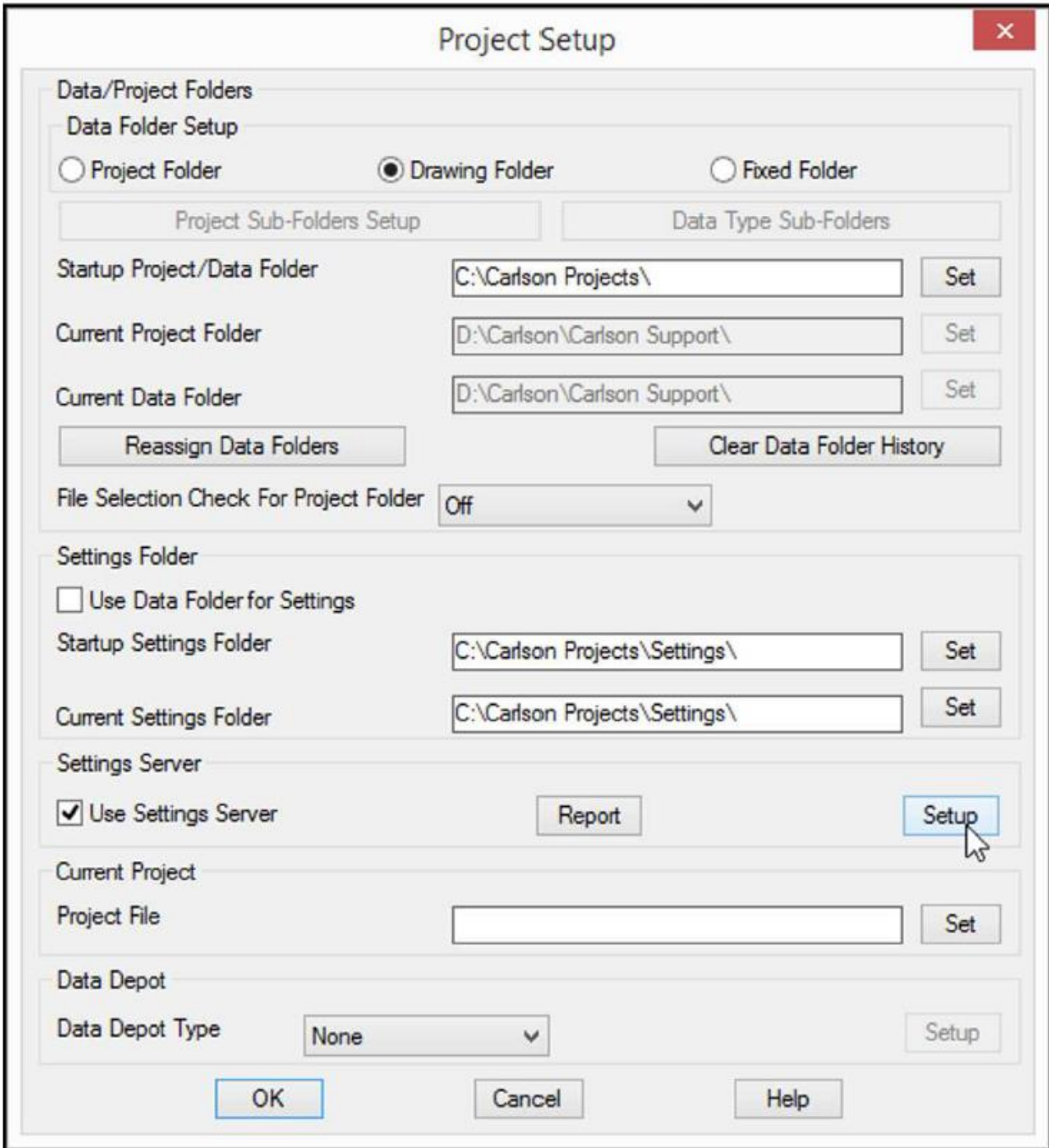
Note: The general Carlson Configuration (CFG) file contains most all of the underlying settings files contained in all the modules. You need not think that you have to create hundreds of external files to make this work. As a matter of fact if you tend to have a singular set of companywide standards, you may only need the CFG, FLO and a hand full of other specific files.

2.2 Configuration

1. From the Setup Ribbon: Select **Set Project Data Folders**.

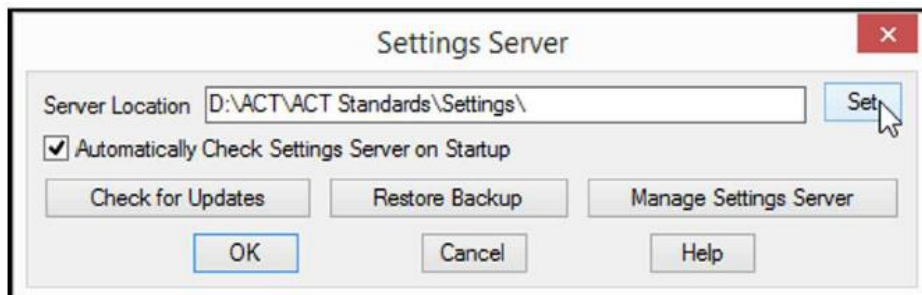


2. Enable the **Use Settings Sever** option and click **Setup**.



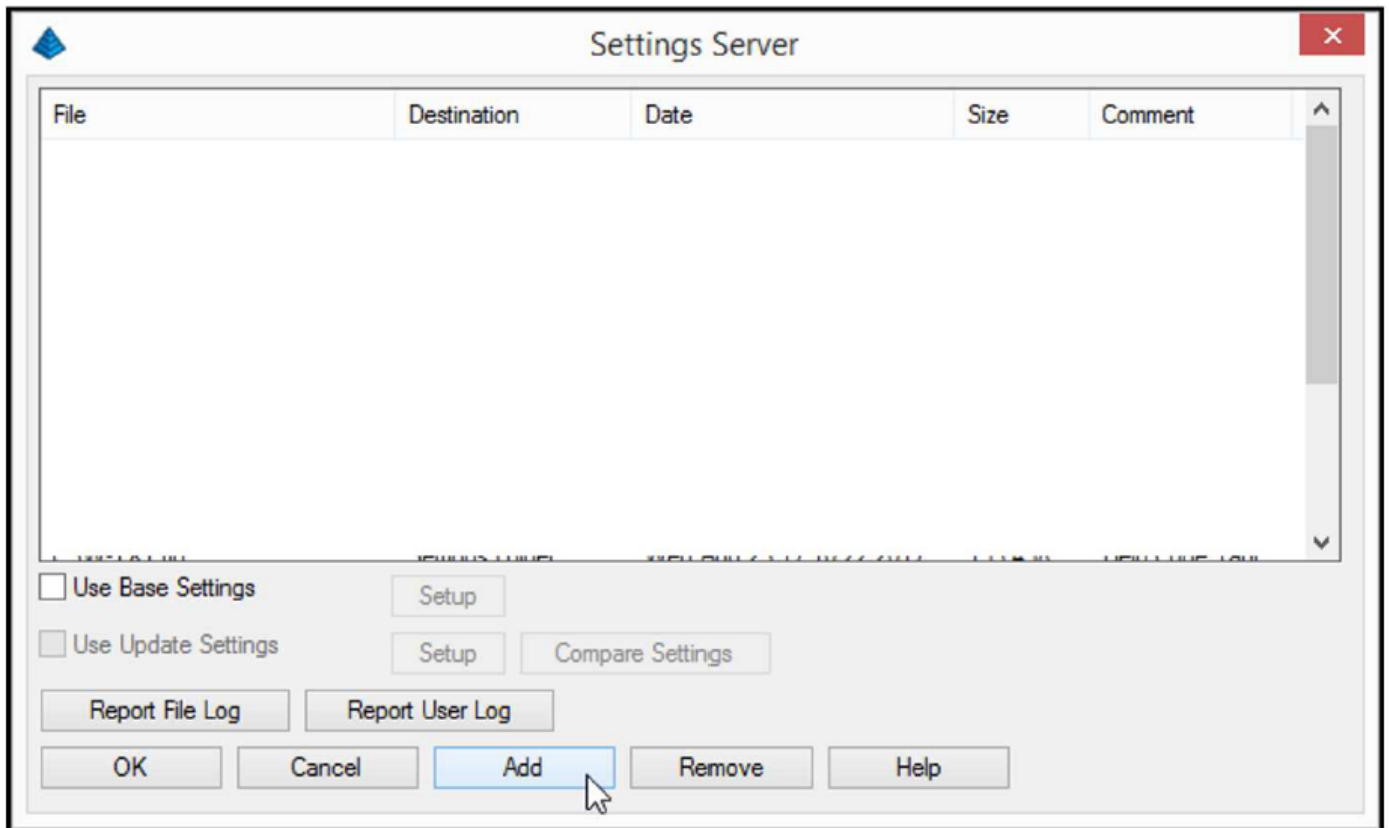
The screenshot shows the 'Project Setup' dialog box. The 'Data/Project Folders' section is expanded, showing 'Data Folder Setup' with three radio buttons: 'Project Folder', 'Drawing Folder' (selected), and 'Fixed Folder'. Below this are two tabs: 'Project Sub-Folders Setup' and 'Data Type Sub-Folders'. The 'Startup Project/Data Folder' is set to 'C:\Carlson Projects\'', 'Current Project Folder' is 'D:\Carlson\Carlson Support\'', and 'Current Data Folder' is 'D:\Carlson\Carlson Support\''. There are buttons for 'Reassign Data Folders' and 'Clear Data Folder History'. The 'File Selection Check For Project Folder' is set to 'Off'. The 'Settings Folder' section has 'Use Data Folder for Settings' unchecked, with 'Startup Settings Folder' and 'Current Settings Folder' both set to 'C:\Carlson Projects\Settings\''. The 'Settings Server' section has 'Use Settings Server' checked, with 'Report' and 'Setup' buttons. The 'Current Project' section has 'Project File' empty. The 'Data Depot' section has 'Data Depot Type' set to 'None'. At the bottom are 'OK', 'Cancel', and 'Help' buttons.

3. Click **Set** and browse to the server and select the folder location you previously created.
4. Click <OK>



The screenshot shows the 'Settings Server' dialog box. The 'Server Location' is 'D:\ACT\ACT Standards\Settings\' and the 'Set' button is highlighted with a mouse cursor. The 'Automatically Check Settings Server on Startup' checkbox is checked. There are buttons for 'Check for Updates', 'Restore Backup', and 'Manage Settings Server'. At the bottom are 'OK', 'Cancel', and 'Help' buttons.

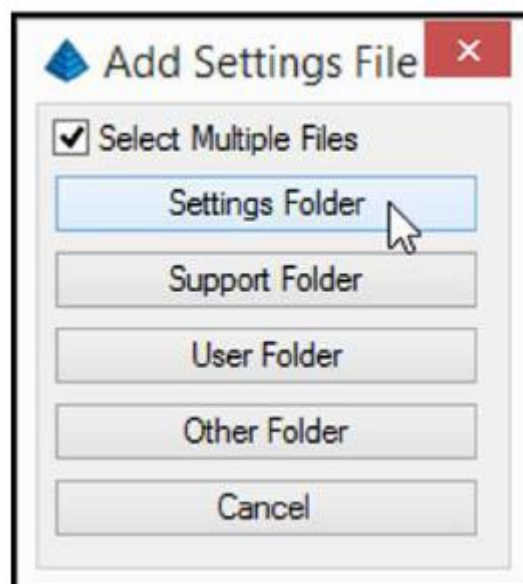
5. Select **Manage Settings Server**.



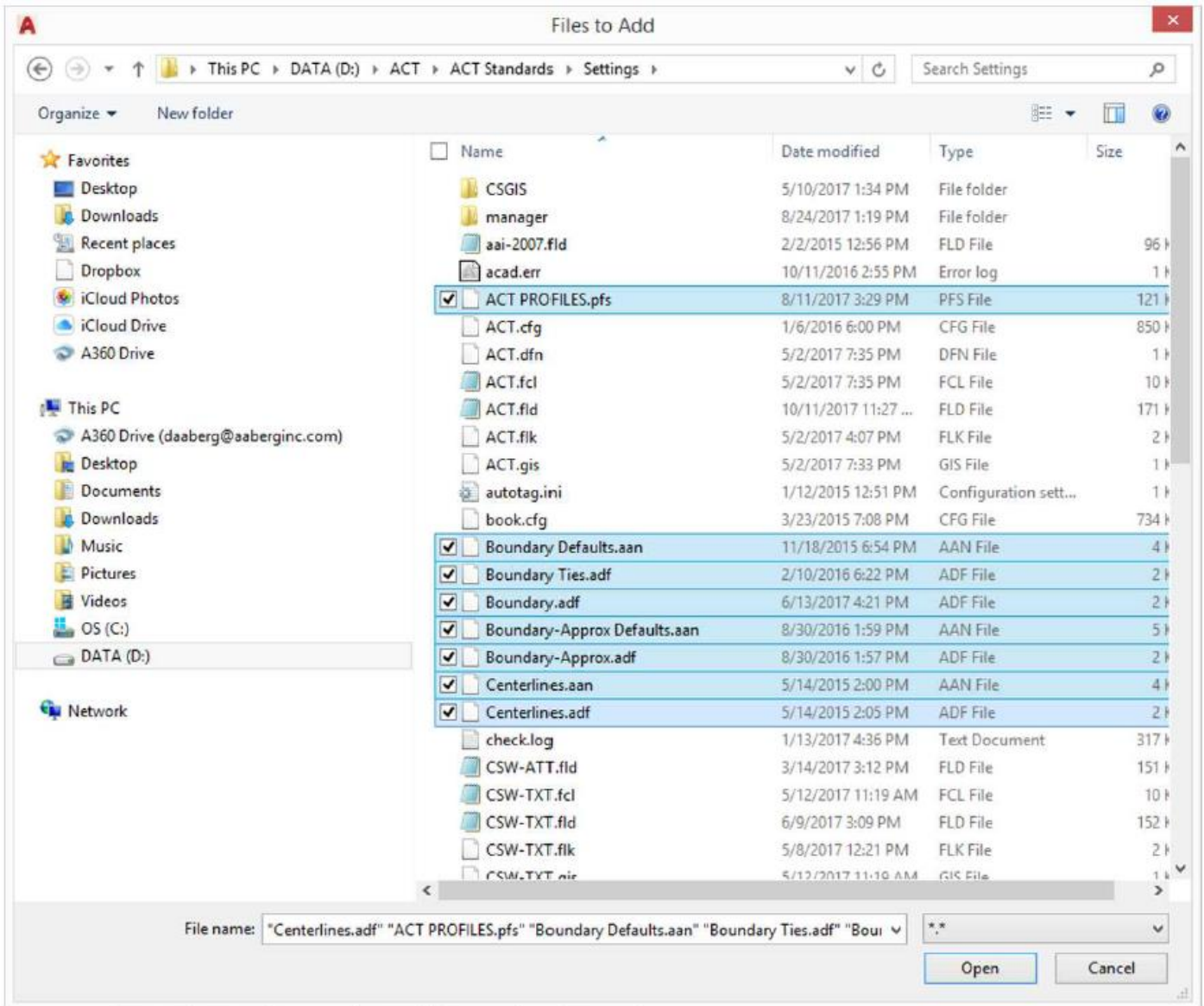
6. Select **Add**.

At this point you have an option of which type of files you are going to add to the Settings Server. In this example we wish to add some settings files.

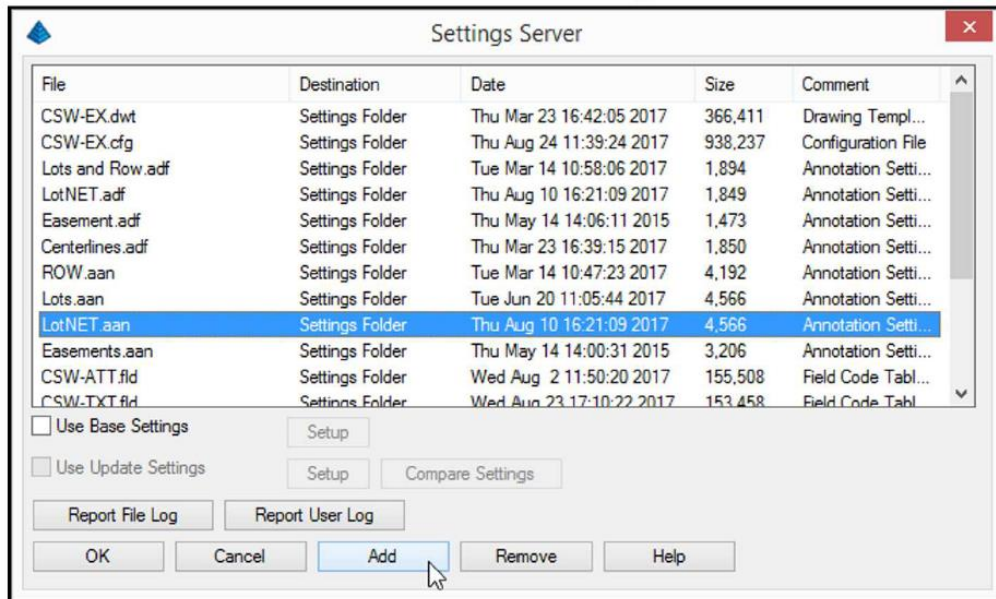
7. Enable the **Select Multiple Files** option.
8. Select **Settings Folder**.



9. Browse to the network folder and select the desired files.



10. Click **Open**.

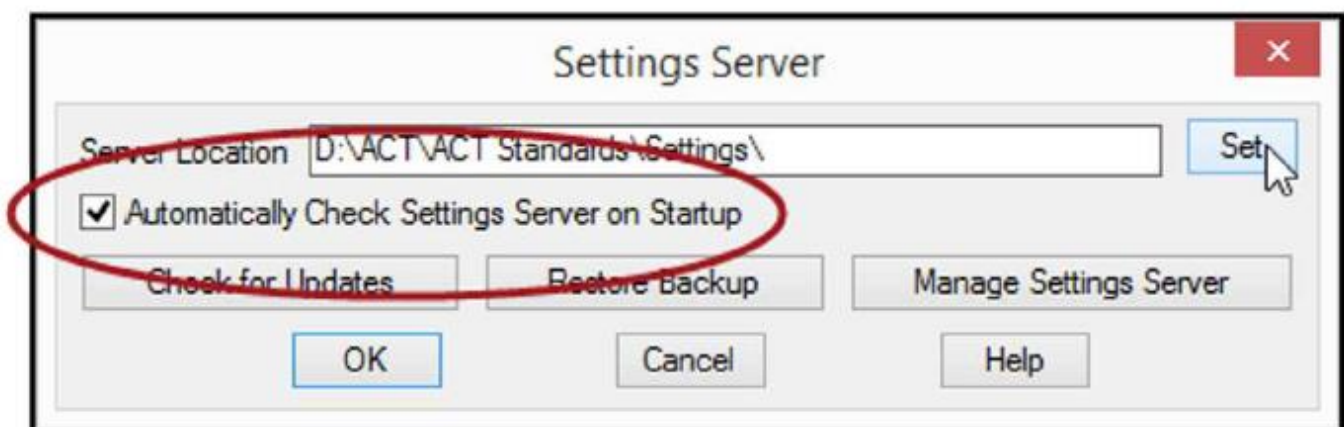


The files selected are displayed in the Settings Server dialog box. Continue the process to add all desired files for settings, support or user defined folders.

2.3 How does this work?

Essentially Carlson copies the files in the Settings Server to the appropriate location on each local hard drive and uses them when performing the various commands. Any changes made to a settings file will be automatically or manually updated potentially each time a user opens Carlson. This can be useful for setting up a new computer, updating remote computers and installing new releases. The update settings control how each computer will be updated.

The option to automatically check settings on startup is a great option to ensure consistency.



Use Base Settings

With this option Base Settings are copied to each workstation only once. After this initial setup, the workstation settings can be changed by that user. This option would not be appropriate if your desire is to control settings companywide.

Use Update Settings

Update Settings are copied to each workstation each time the workstation checks the Settings Server. These Update Settings can be used to make sure certain settings are kept set on workstations.

You can use the Setup button settings in the Settings Explorer command to review and edit the settings for each file.

Compare Settings

This function reports the difference between the Base Settings and the Update Settings.

Report File Log

This button reports the date and time each file is distributed per user.

Report User Log

This command reports the date and time that users have checked into the Settings Server and it reports the version and build date of Carlson that they are running.