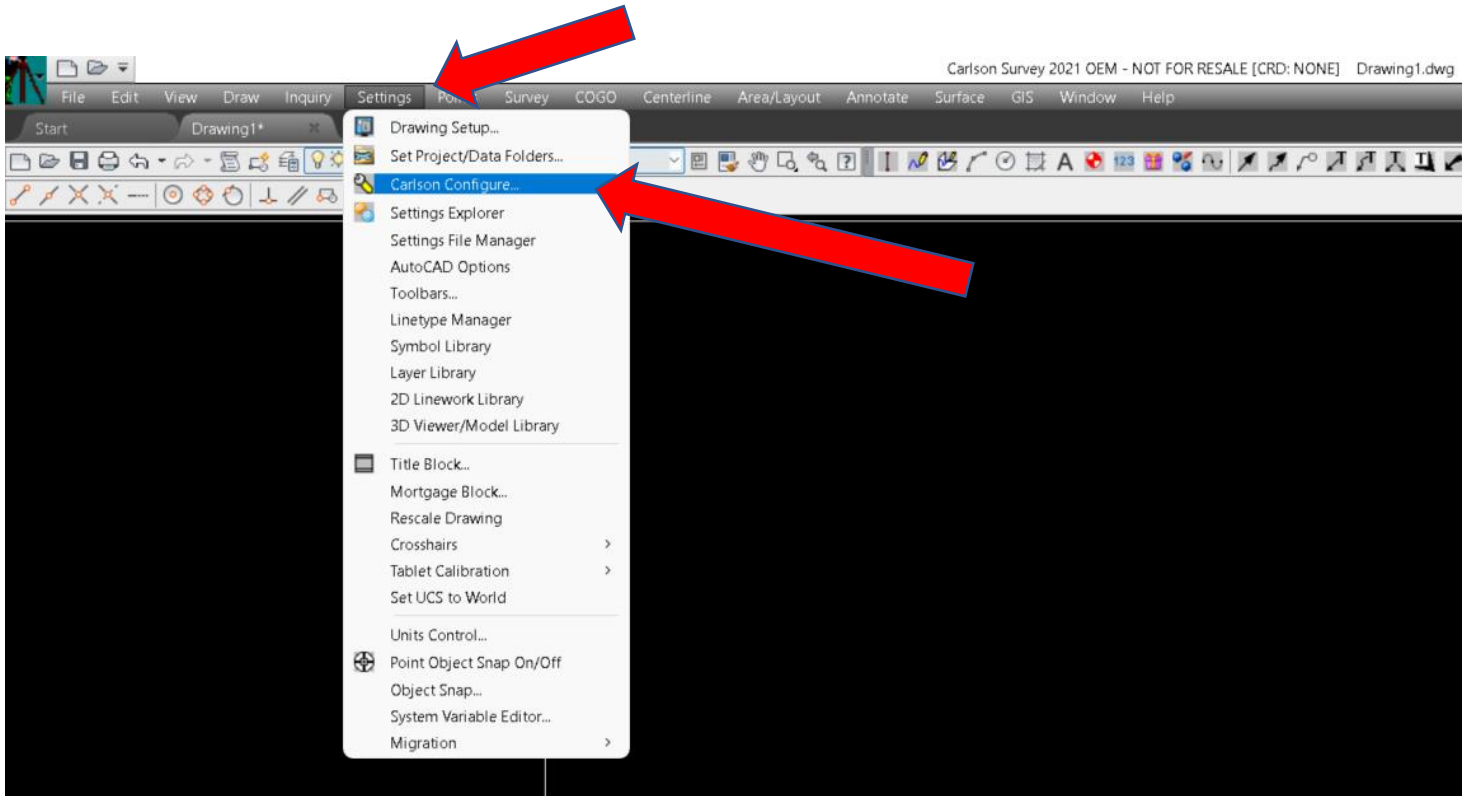
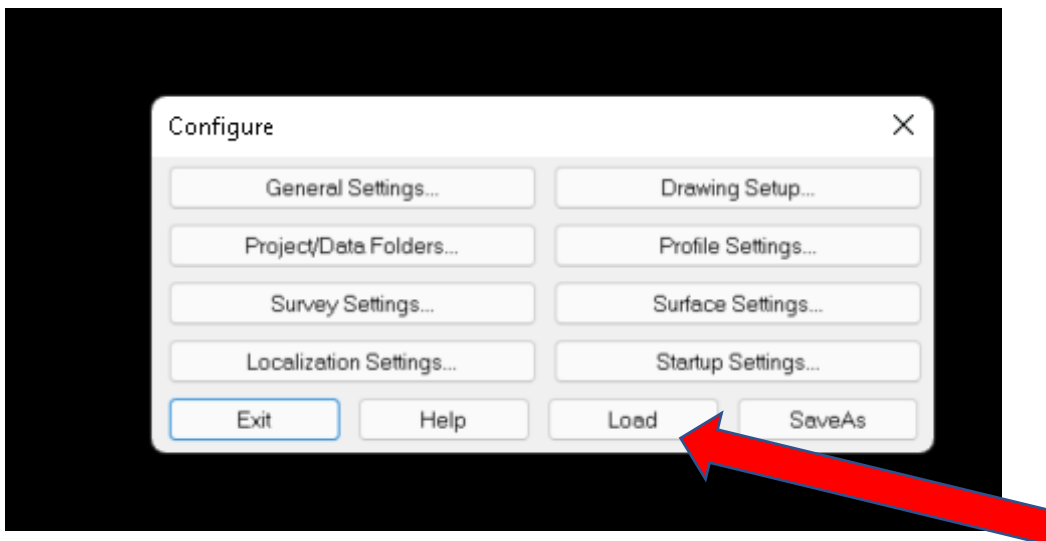


# How to load Metric Configure file:

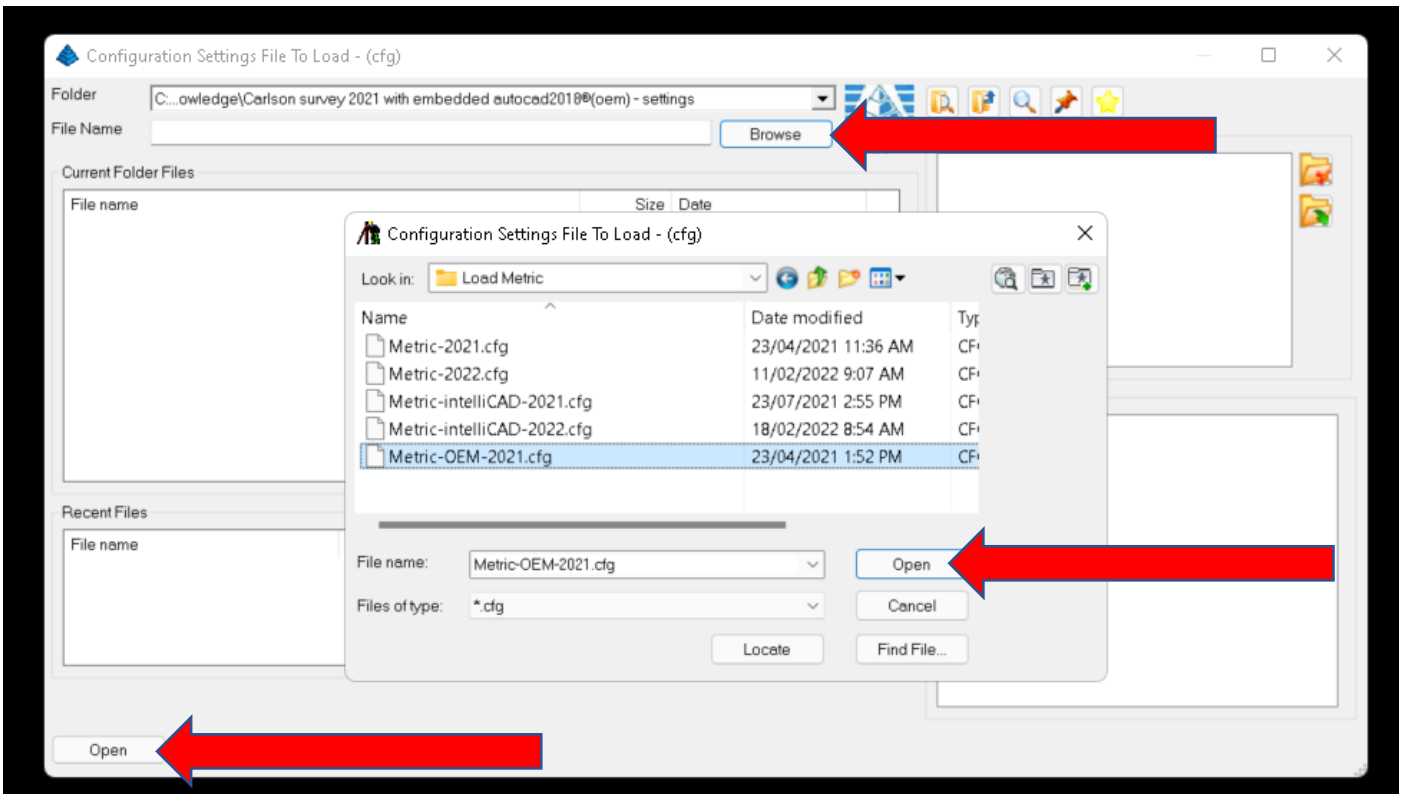
1. Save the attached 'Metric-OEM-2021.cfg' file on your computer & make note of where you saved it as you will need it in the next step.
2. Open up Carlson Survey with embedded AutoCAD(OEM)
3. Go to Settings/Carlson Configure



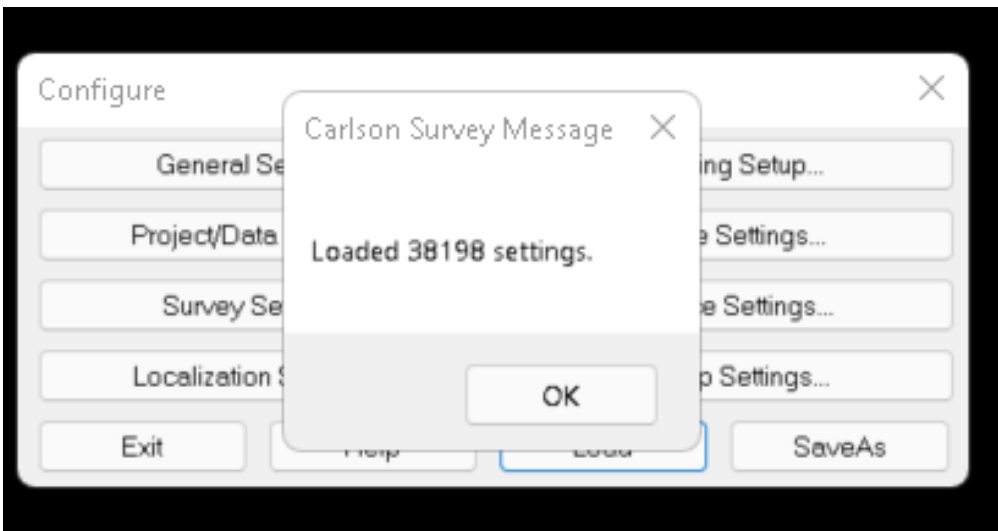
4. Click 'Load'



5. Browse to where you had saved the 'Metric-OEM-2021.cfg' earlier and click 'Open' & 'Open'



There should be around 38198 settings loaded.



If you make any changes to your Configure file then 'SaveAs' for later installs.

**Note:-** Carlson has 'Load' & 'SaveAs' all through the program and these will be covered in other guides.