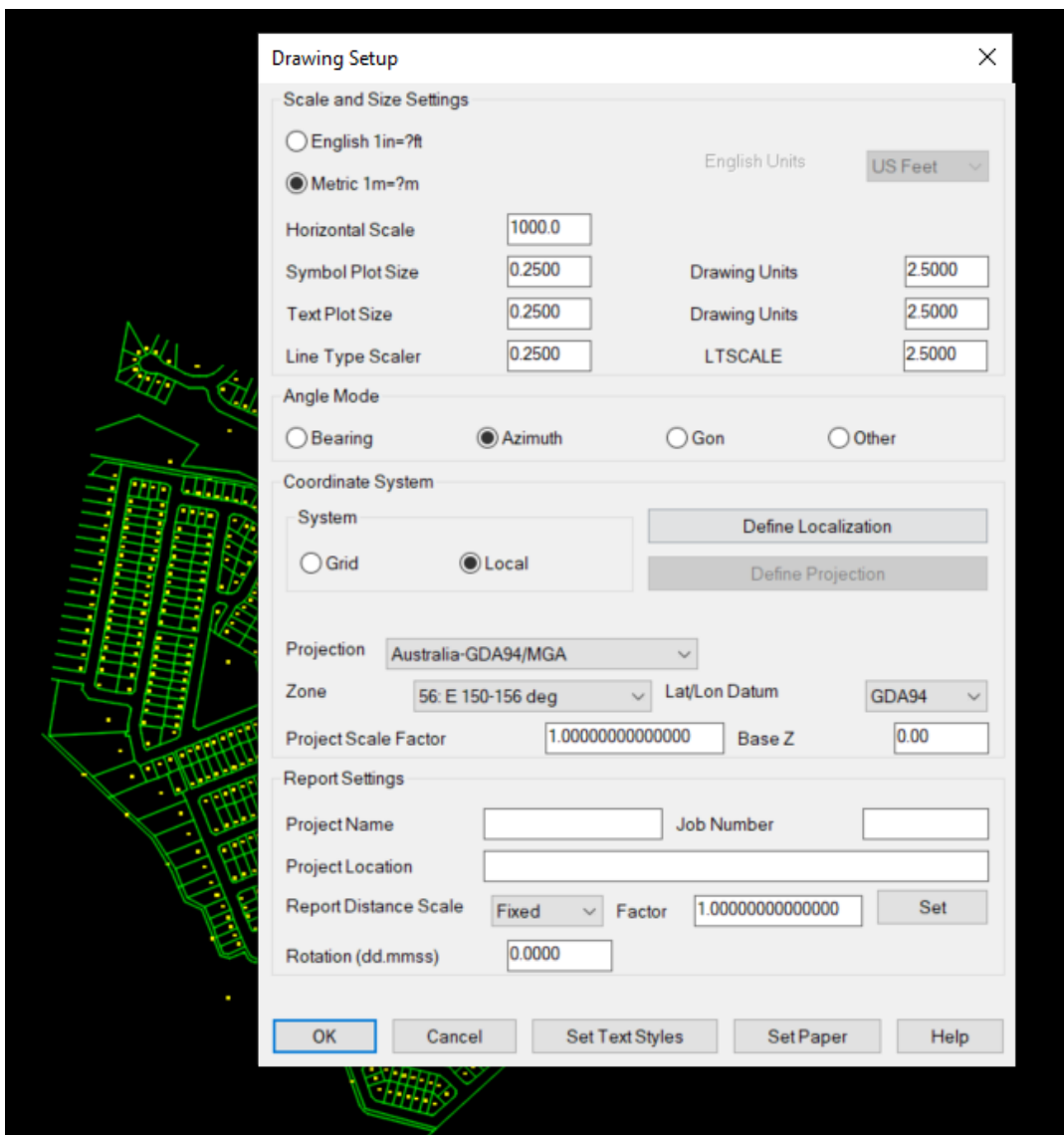
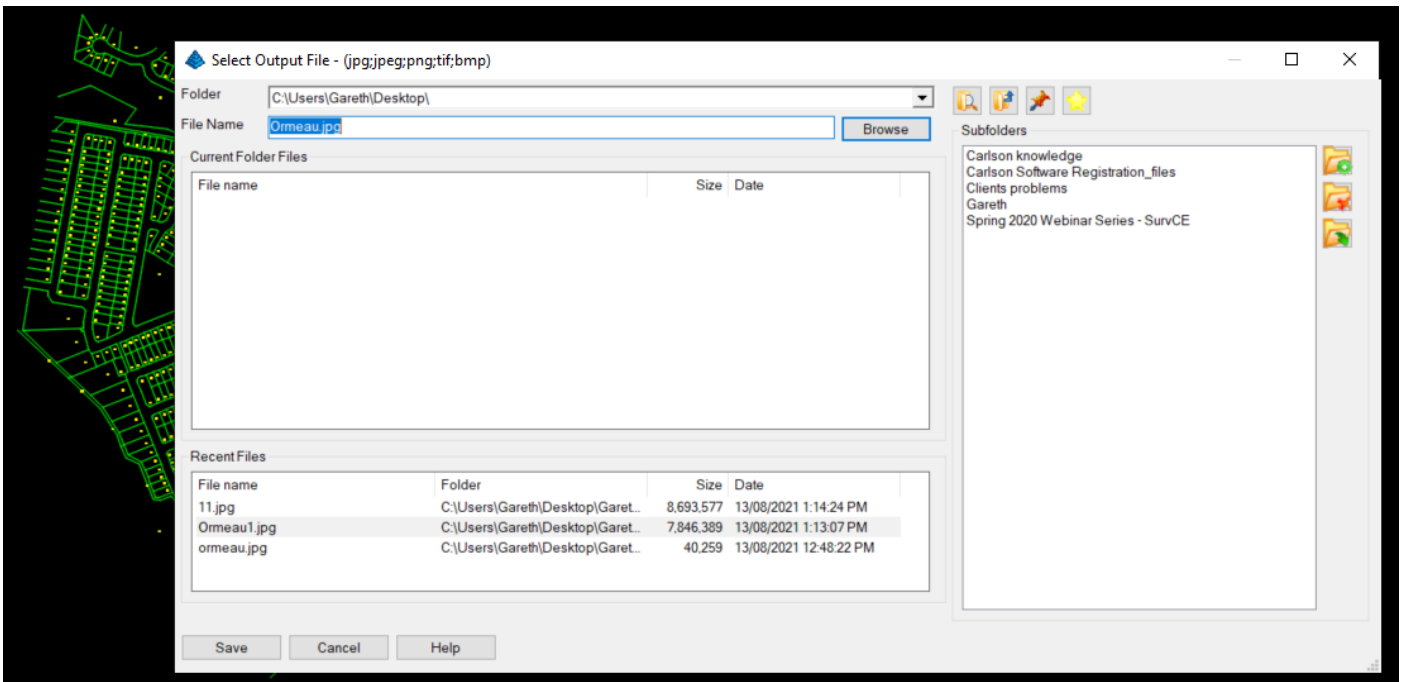


Insert Google Image

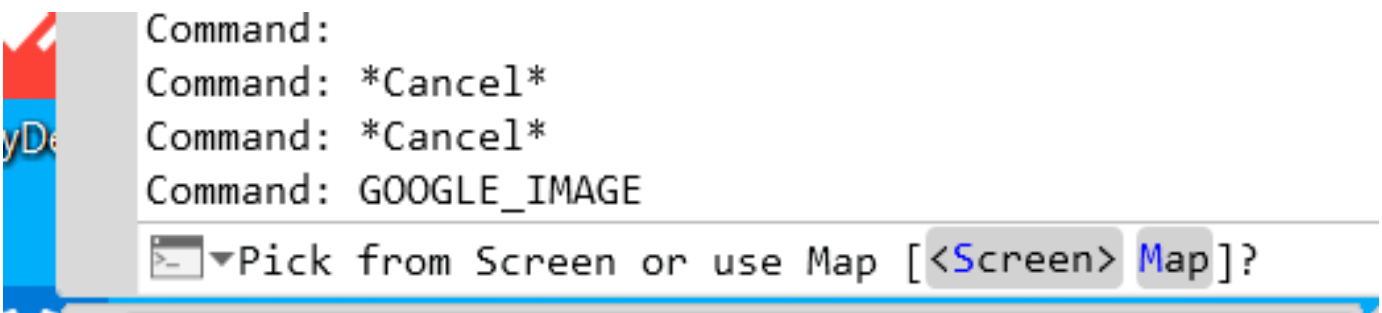
This command inserts a geo-referenced image into the drawing using the Google Earth imagery server. This command requires an internet connection. In order to automatically place the geo-referenced image in the drawing, the drawing must also be geo-referenced by defining the grid projection in the Settings > Drawing Setup command. If the drawing isn't geo-referenced, you still can place the image by manually picking the location.



Type 'google_image' into the command line. The command starts by prompting for the image file to create. The Google Earth image will be saved to this file name and then inserted into the drawing.



Next the program prompts to pick the area in the drawing for the image. You can either screen pick two points to window the area for the image, or use the Map option to graphically set the image area. In the Map dialog, use the mouse wheel to zoom in/out and click-n-drag the mouse to pan. You can also enter a place name or address in the Search field to set the view.



Once an area has been selected for the image the 'Place Google Earth Image' dialog box appears where the **Resolution**, **Map Type** and **Layer** will be set.

Resolution: controls the size of the image file. The Preview window shows the number of pixels for the currently selected Resolution.

Map Type: selects the type of image to create.

Bounds: shows the currently selected area in decimal lat/lon. Pick the Set button to pick a new area in the drawing.

File: the image file to create.

Layer: sets the layer for the image in the drawing.

Place in background: sets the display order for the image to back.

