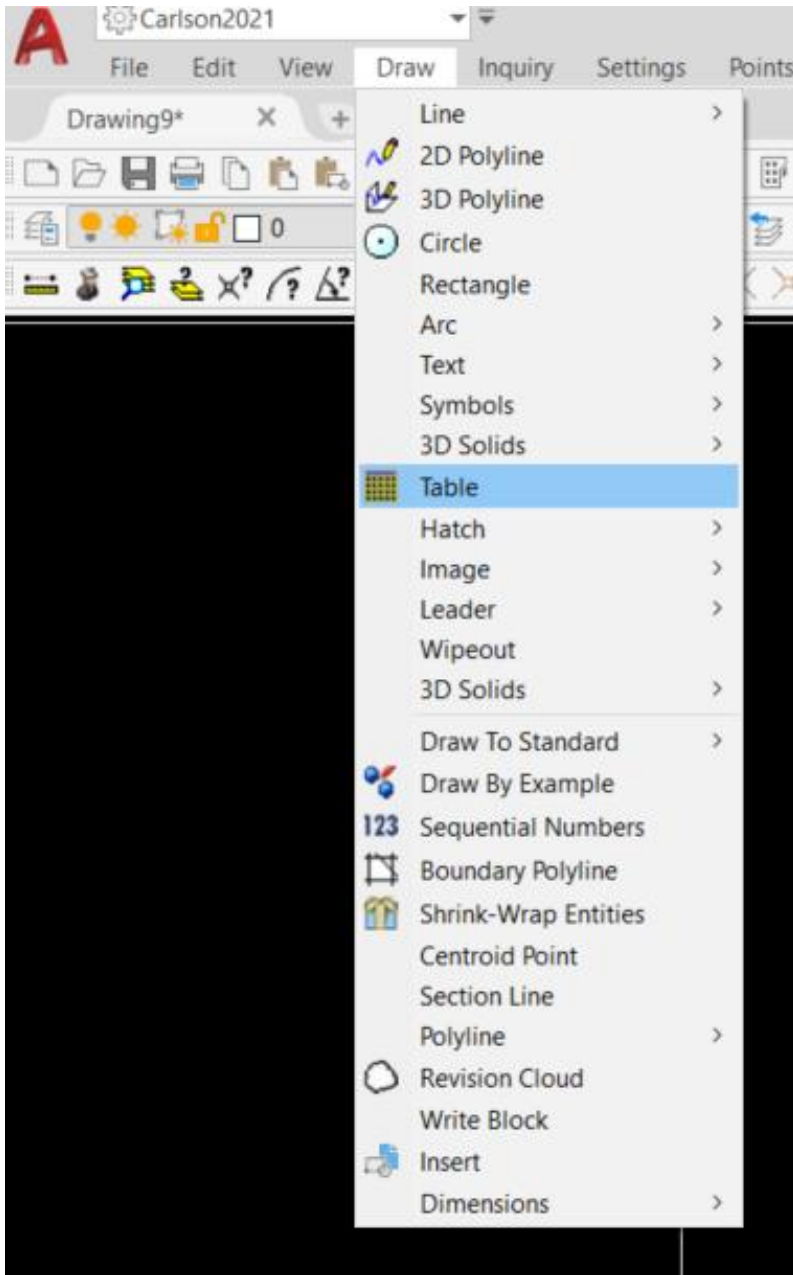
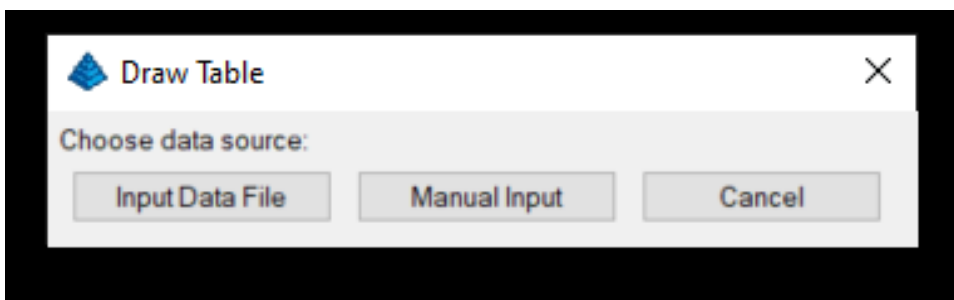


Add Tables to a drawing

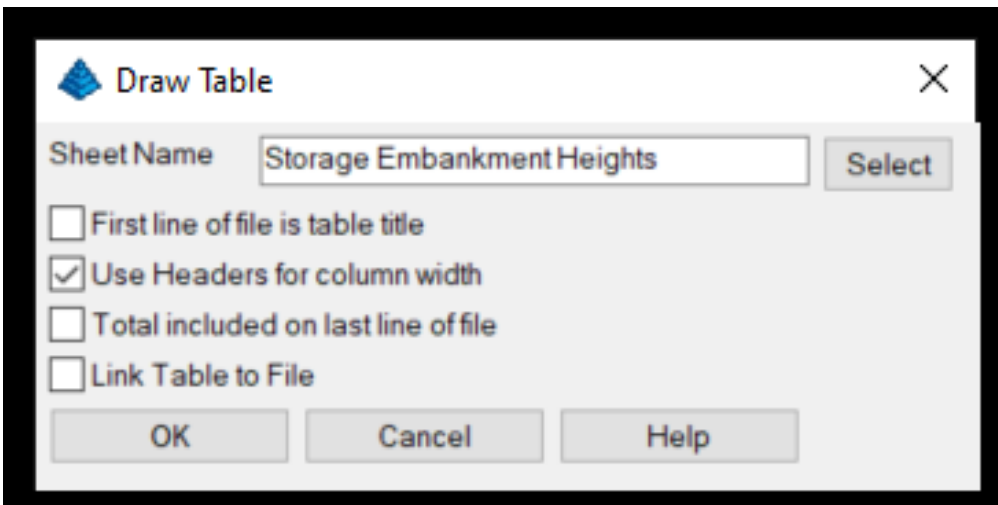
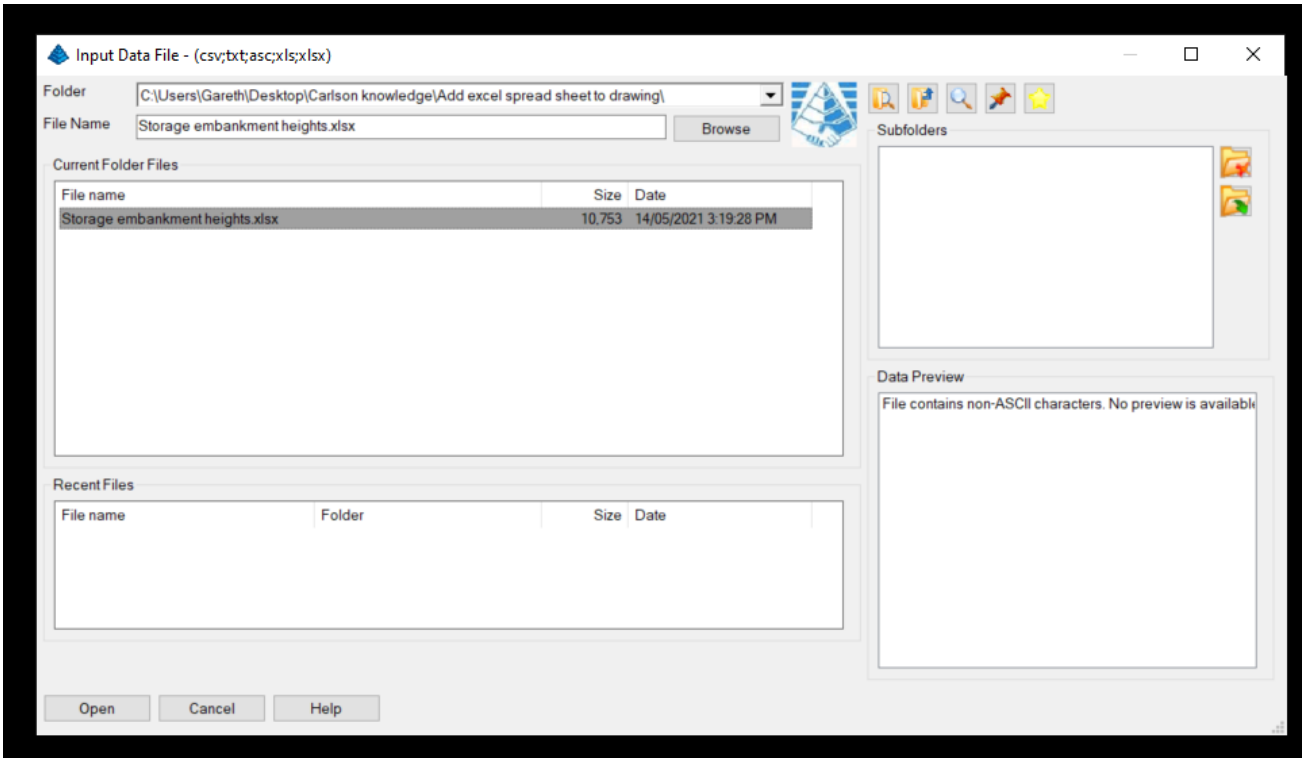
To add a Table to a drawing go to drop down menu 'Draw' then 'Table' or alternately type into the command bar 'csv2tbl'



The following screen should appear

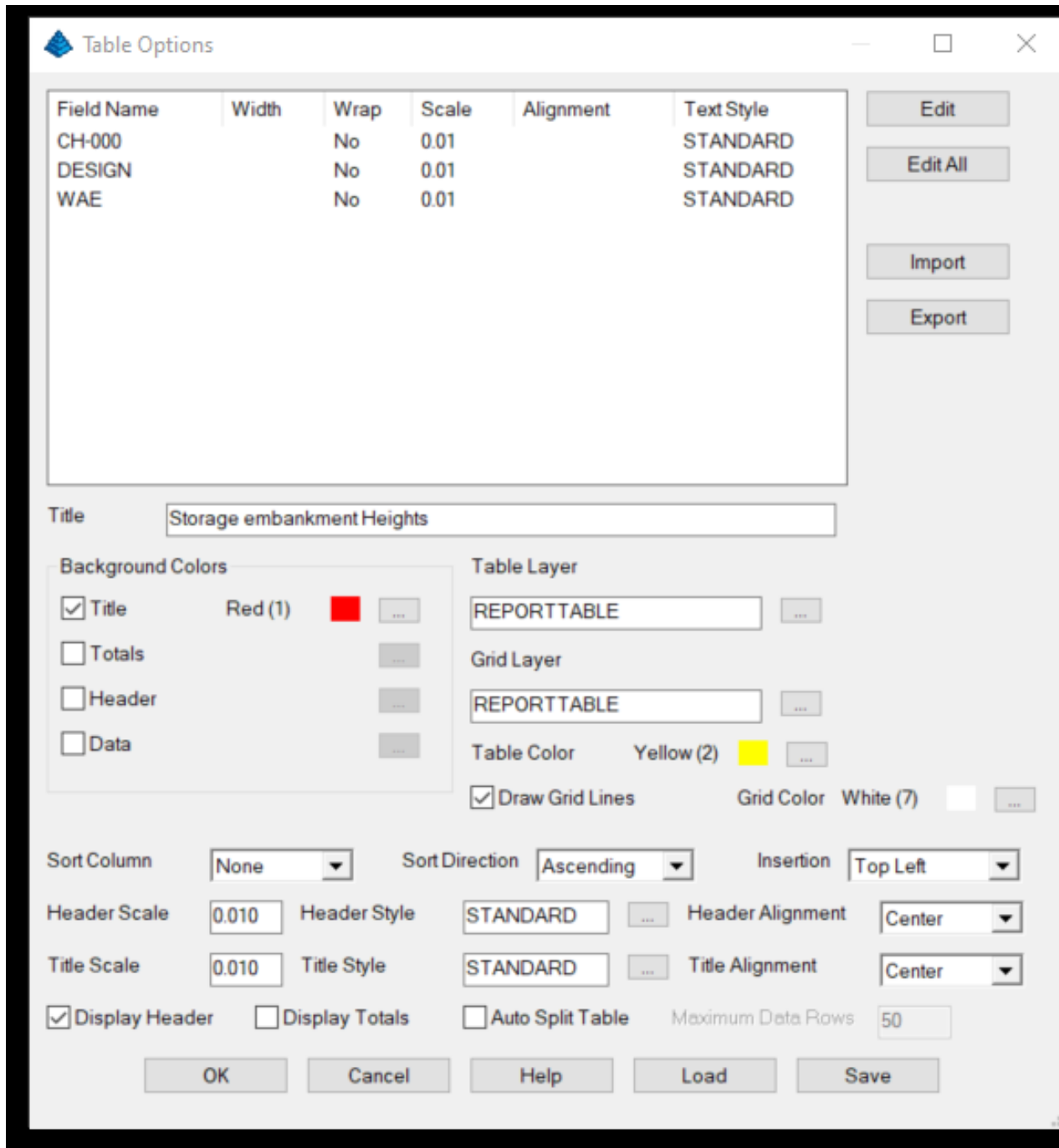


Select 'Input Data File' and browse to where the Table is that needs to be inserted into the drawing.



In this case 'Storage Embankment Heights' is the sheet selected from the a Excel file.

Next select a location for the table in the drawing and once done then the following screen will appear. This is where options on the style and look of the table need to be made, a title for the table can also be added. This style may take several attempts to get right but once it is correct it can be saved and then loaded in other drawings.



Field Name	Width	Wrap	Scale	Alignment	Text Style
CH-000		No	0.01		STANDARD
DESIGN		No	0.01		STANDARD
WAE		No	0.01		STANDARD

Title: Storage embankment Heights

Background Colors: Title (Red (1)), Totals, Header, Data

Table Layer: REPORT TABLE

Grid Layer: REPORT TABLE

Table Color: Yellow (2)

Grid Color: White (7)

Draw Grid Lines

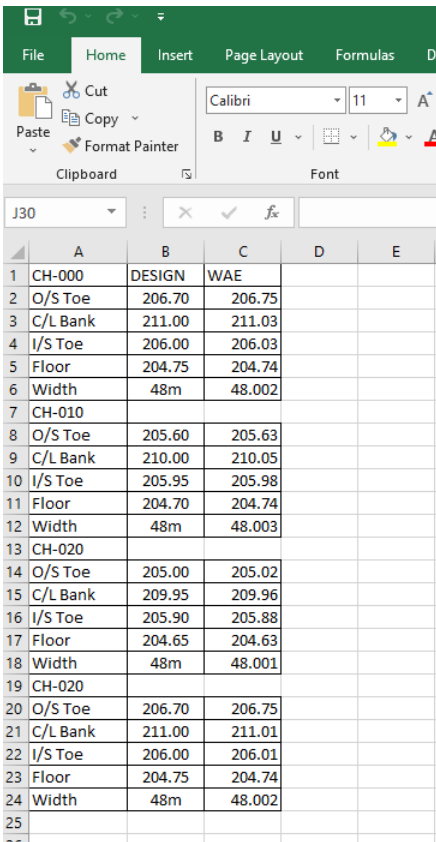
Sort Column: None, Sort Direction: Ascending, Insertion: Top Left

Header Scale: 0.010, Header Style: STANDARD, Header Alignment: Center

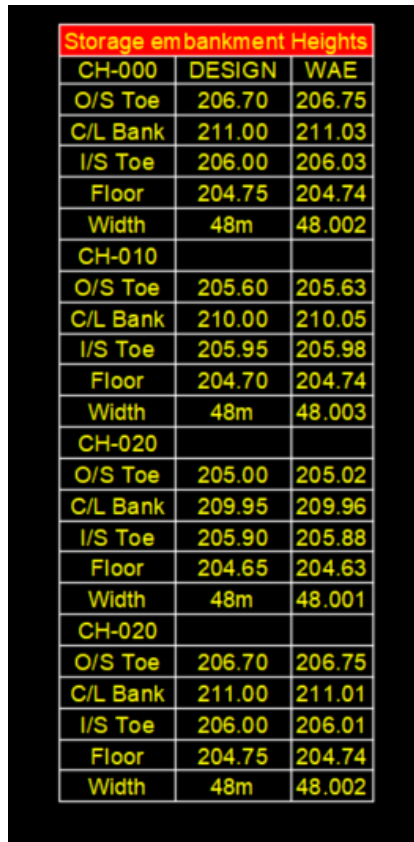
Title Scale: 0.010, Title Style: STANDARD, Title Alignment: Center

Display Header, Display Totals, Auto Split Table, Maximum Data Rows: 50

This Excel spread sheet (left) will look like this in the drawing (right)

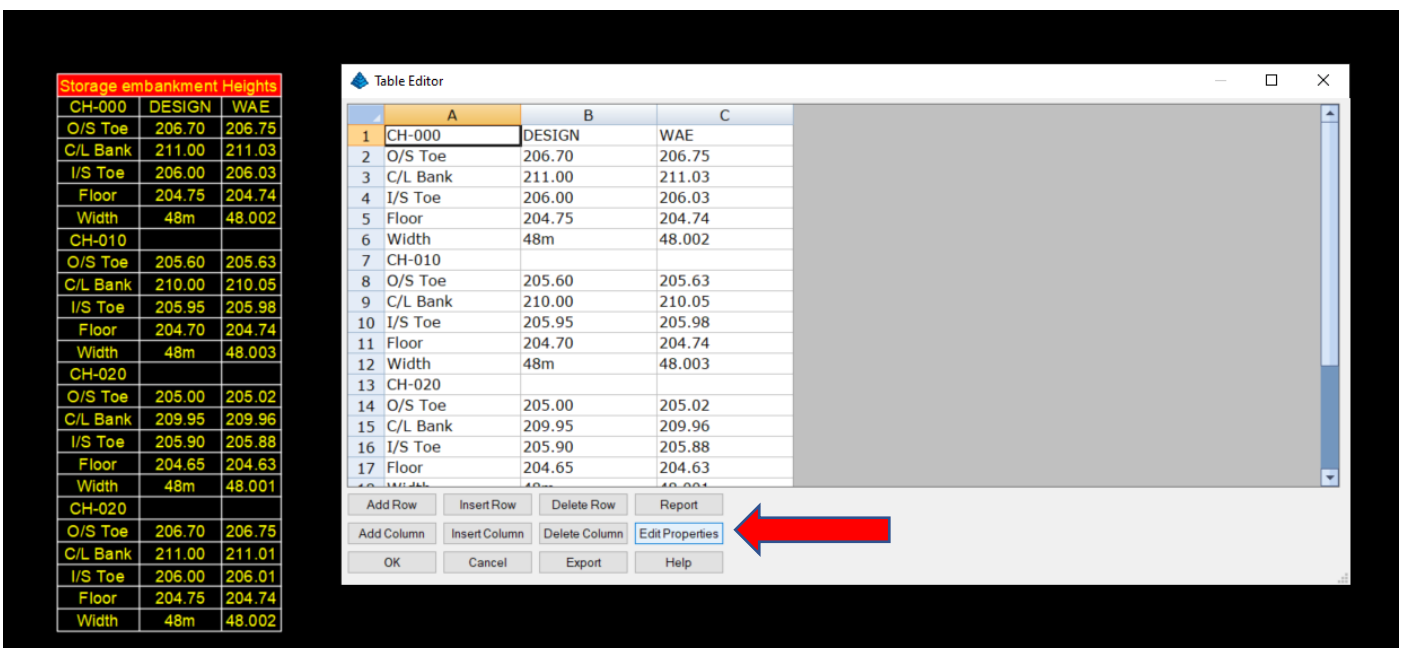


	A	B	C	D	E
1	CH-000	DESIGN	WAE		
2	O/S Toe	206.70	206.75		
3	C/L Bank	211.00	211.03		
4	I/S Toe	206.00	206.03		
5	Floor	204.75	204.74		
6	Width	48m	48.002		
7	CH-010				
8	O/S Toe	205.60	205.63		
9	C/L Bank	210.00	210.05		
10	I/S Toe	205.95	205.98		
11	Floor	204.70	204.74		
12	Width	48m	48.003		
13	CH-020				
14	O/S Toe	205.00	205.02		
15	C/L Bank	209.95	209.96		
16	I/S Toe	205.90	205.88		
17	Floor	204.65	204.63		
18	Width	48m	48.001		
19	CH-020				
20	O/S Toe	206.70	206.75		
21	C/L Bank	211.00	211.01		
22	I/S Toe	206.00	206.01		
23	Floor	204.75	204.74		
24	Width	48m	48.002		



Storage embankment Heights		
CH-000	DESIGN	WAE
O/S Toe	206.70	206.75
C/L Bank	211.00	211.03
I/S Toe	206.00	206.03
Floor	204.75	204.74
Width	48m	48.002
CH-010		
O/S Toe	205.60	205.63
C/L Bank	210.00	210.05
I/S Toe	205.95	205.98
Floor	204.70	204.74
Width	48m	48.003
CH-020		
O/S Toe	205.00	205.02
C/L Bank	209.95	209.96
I/S Toe	205.90	205.88
Floor	204.65	204.63
Width	48m	48.001
CH-020		
O/S Toe	206.70	206.75
C/L Bank	211.00	211.01
I/S Toe	206.00	206.01
Floor	204.75	204.74
Width	48m	48.002

Double clicking on the table in the drawing will allow amendments to be made to both the table contents and the look of the table via 'Edit Properties'



Storage embankment Heights		
CH-000	DESIGN	WAE
O/S Toe	206.70	206.75
C/L Bank	211.00	211.03
I/S Toe	206.00	206.03
Floor	204.75	204.74
Width	48m	48.002
CH-010		
O/S Toe	205.60	205.63
C/L Bank	210.00	210.05
I/S Toe	205.95	205.98
Floor	204.70	204.74
Width	48m	48.003
CH-020		
O/S Toe	205.00	205.02
C/L Bank	209.95	209.96
I/S Toe	205.90	205.88
Floor	204.65	204.63
Width	48m	48.001
CH-020		
O/S Toe	206.70	206.75
C/L Bank	211.00	211.01
I/S Toe	206.00	206.01
Floor	204.75	204.74
Width	48m	48.002

Table Editor

	A	B	C
1	CH-000	DESIGN	WAE
2	O/S Toe	206.70	206.75
3	C/L Bank	211.00	211.03
4	I/S Toe	206.00	206.03
5	Floor	204.75	204.74
6	Width	48m	48.002
7	CH-010		
8	O/S Toe	205.60	205.63
9	C/L Bank	210.00	210.05
10	I/S Toe	205.95	205.98
11	Floor	204.70	204.74
12	Width	48m	48.003
13	CH-020		
14	O/S Toe	205.00	205.02
15	C/L Bank	209.95	209.96
16	I/S Toe	205.90	205.88
17	Floor	204.65	204.63
18	Width	48m	48.001