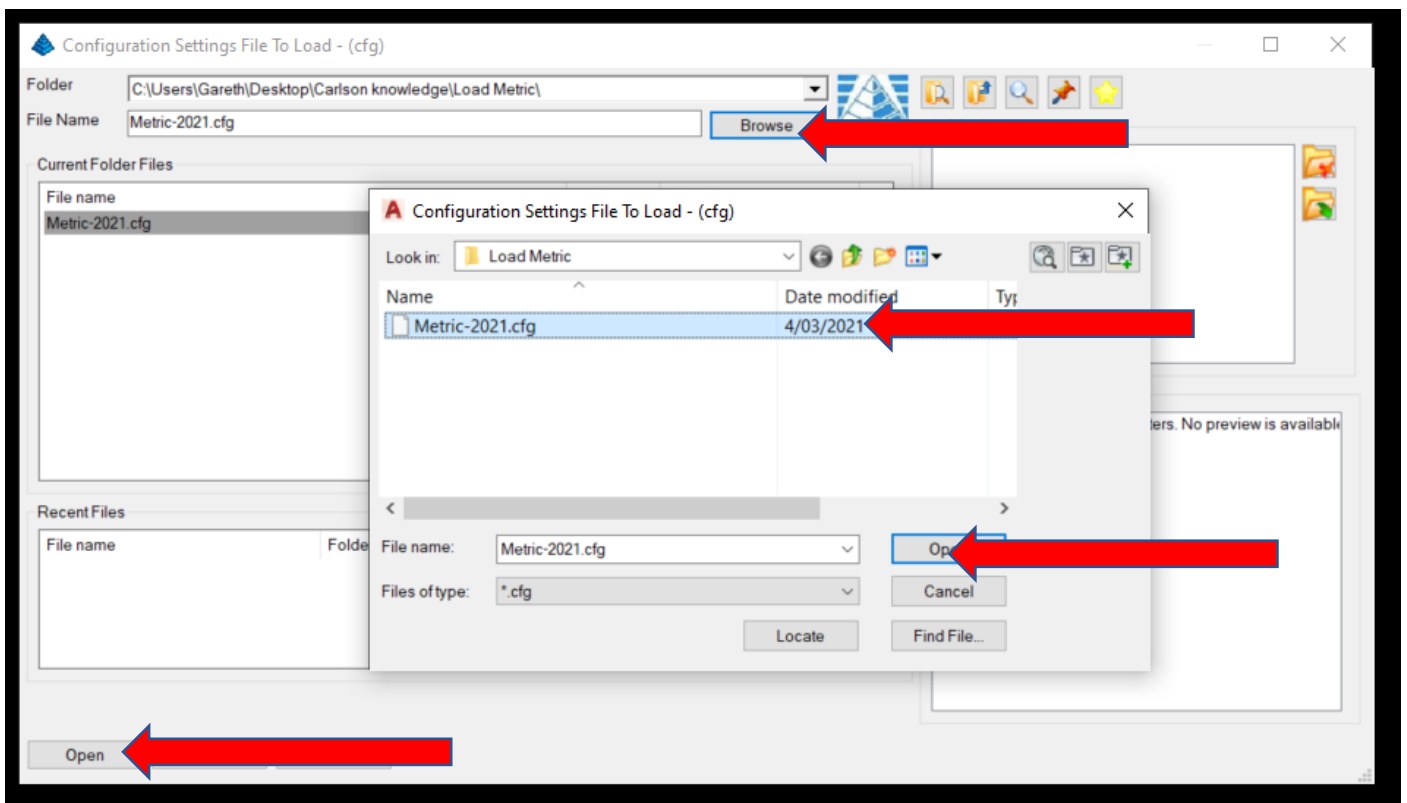
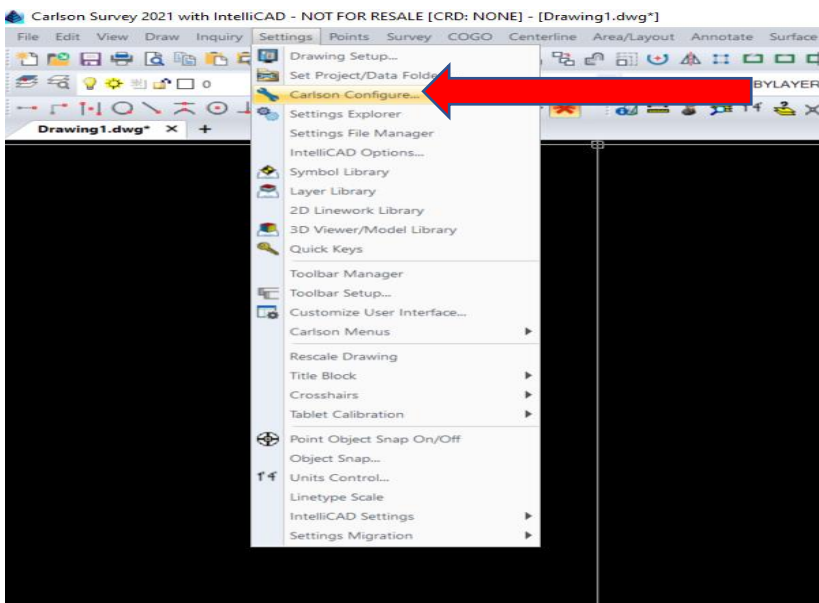


Importing & reducing As Construction data for Survey

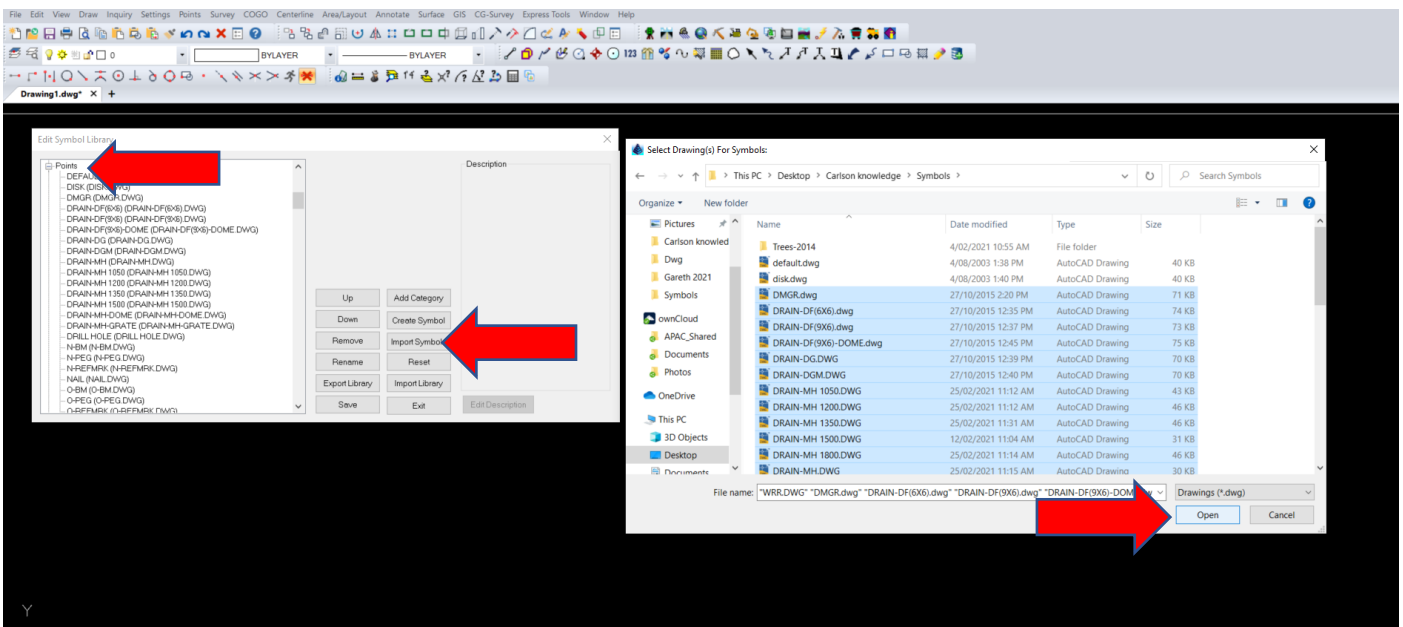
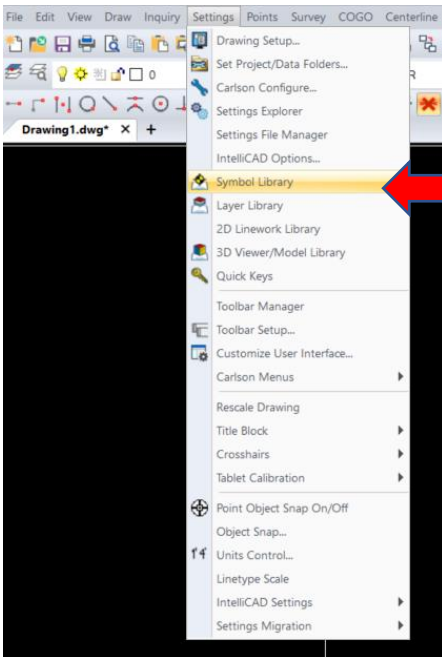
If you are running Survey, all Carlson modules will be able to reduce As Constructed codes from the attached

[Australia AsConstructed layers for ADAC- Codes.fld](#)

1. Save the Metric-2021.cfg file (Attached) then open Survey and load (see below) so that metric system is installed, there should be 37181 settings loaded.



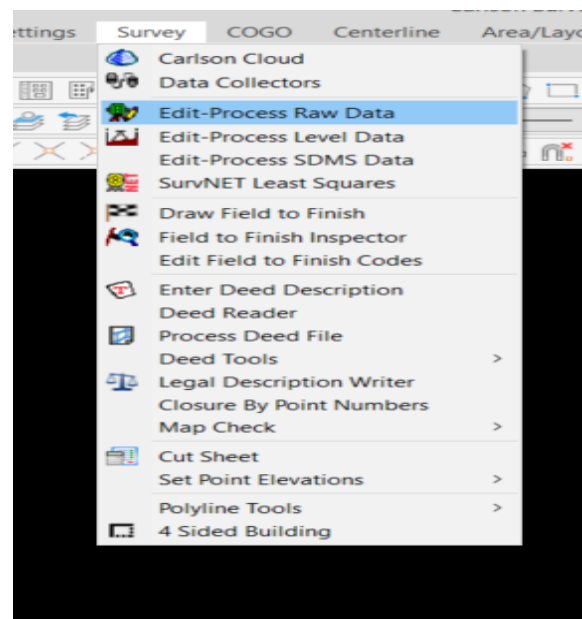
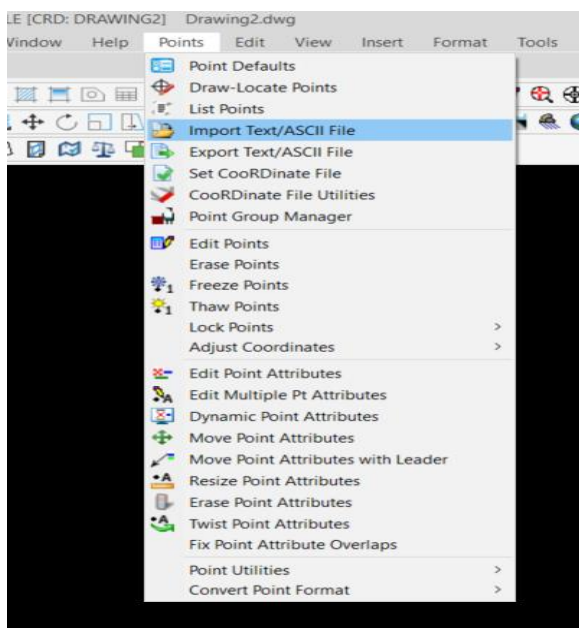
2. Unzip the attached 'Australia AsConstructed ADAC Symbols.zip' folder and save on your computer. To import the symbol files (.dwg) into the appropriate area go to - Settings/Symbol Library/Points



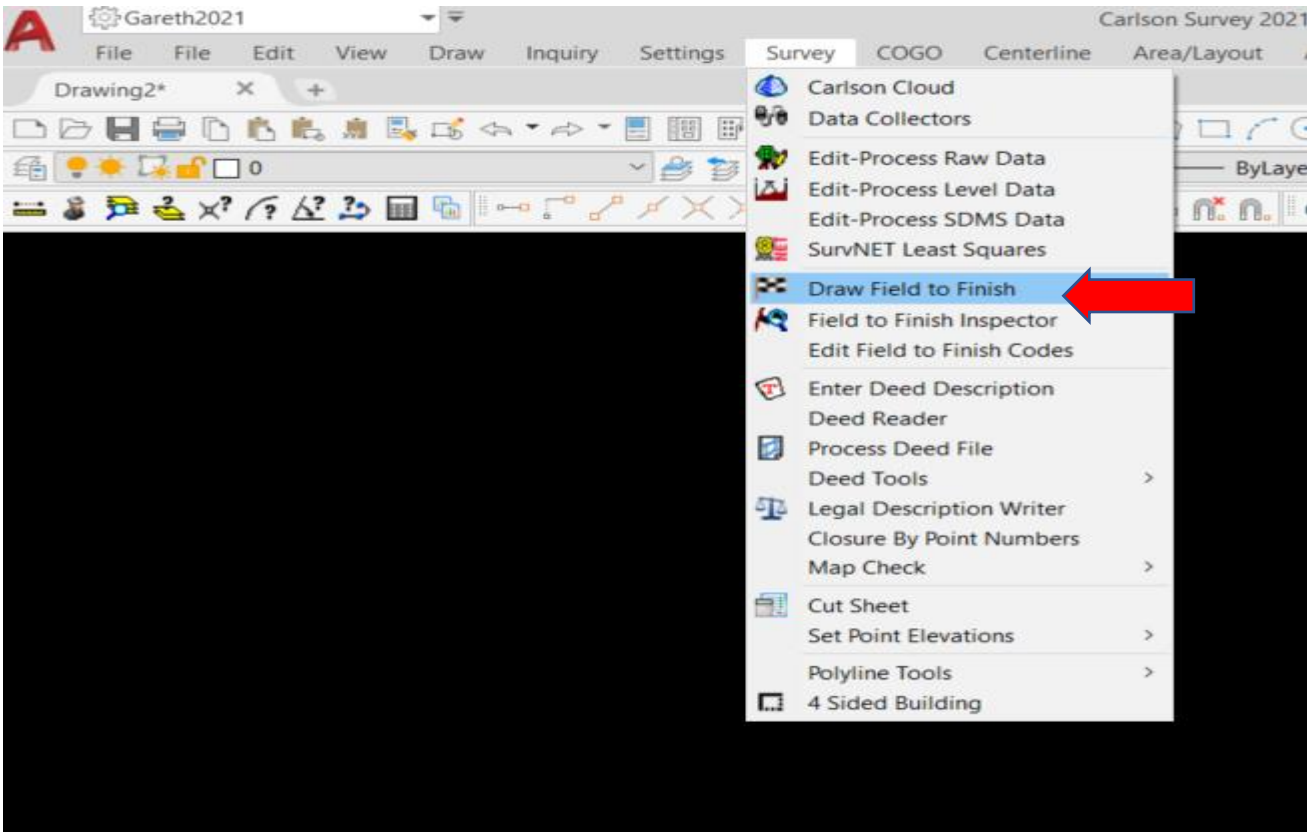
3. Use codes from the attached 'Australia Asconstructed layers for ADAC- Codes Table.txt' in your instrument.

4. If wanting a line/Polyline than add 01 after the code, each new line/Polyline will need a different number. E.g. RM01, RM02 or alternately start the line/Polyline with +7 and end with -7 E.g RM+7,RM,RM,RM,RM,RM,RM-7 (See special codes)

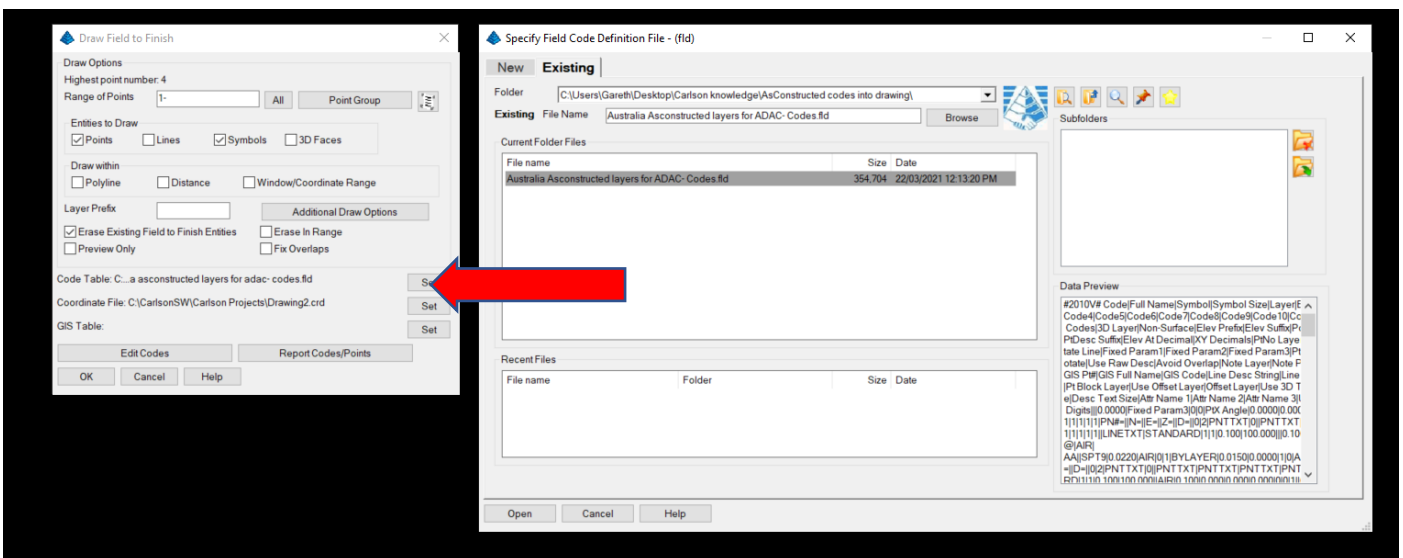
5. Import field data into drawing either by Points/Import Text/ASCII File or via Survey/Edit-Process Raw Data



6. Run 'Draw Field To Finish' using 'Australia AsConstructed layers for ADAC- Codes.fld'



You may need to set 'Australia AsConstructed layers for ADAC- Codes.fld'



7. If any codes are large in the drawing than FTF has not recognised the code so it will need to be edited under Points/Edit Points or create a code in 'Draw Field to finish' under "Edit Codes"

