

The Carlson BRx7 GNSS receiver requires SurvCE or SurvPC Version 6.11 or higher.

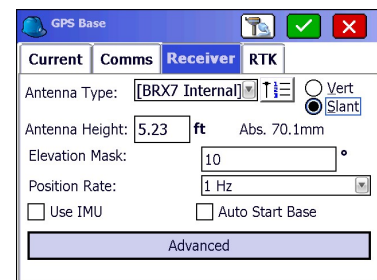
**Here is the instructions for connecting a BRx7 base and rover using the internal UHF radios:**

1) Power on your BRx7 base and then tap Equip / GPS Base and set it for Manufacturer: Carlson and Model: BRx7

2) Tap the "Comms" tab and set it for "Type: Bluetooth" and "BT Type: Windows Mobile" and tap the "wrenches" icon to the right. Tap "Find Device" and follow the prompts to select the serial number of your BRx7 base then tap the Bluetooth plug icon in the top middle

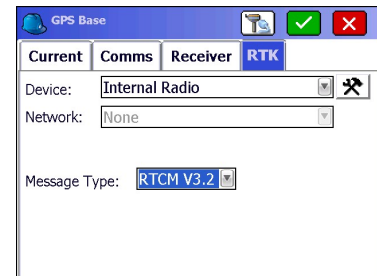


3) Then tap the Receiver tab and tap next to "**Slant**" and measure up to the line where the top Blue cap meets the bottom Grey housing as shown in the image above (*where the Arrow points to the red line*) for your base Antenna Height



4) Attach the silver metal bracket to the bottom of the BRx7 base then attach the short cable to the UHF antenna port under the dust cap. Then connect the **QT400-T 403-470 MHz** antenna to the bracket so it points straight up in the air.

5) Tap the RTK tab and set it for "Device: **Internal Radio**" and "Message Type: **RTCM V3.2**"



6) Tap the "wrenches" next to "Device: Internal Radio" and then tap the "**Advanced Settings**" button at the bottom. Tap green check to accept responsibility

7) Fill out the radio using the settings below then tap the Green Check:

Protocol: **Satel**

Power: **1 watt**

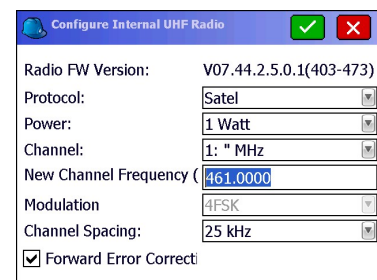
Channel: 1: 0 Mhz

New Channel Frequency: **461.0000**

Channel Spacing: **25khz**

Forward Error Correction: **Checked On**

*\*\*\*If you have an FCC licensed frequency or a custom frequency you want to use you can type this into the "New Channel Frequency" box and it will program Channel #1 to the new frequency.*

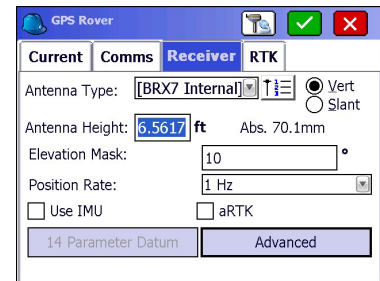


8) Tap the Green Check and use one of the options in the “From New Position” or the “From Known position” to start the GPS base

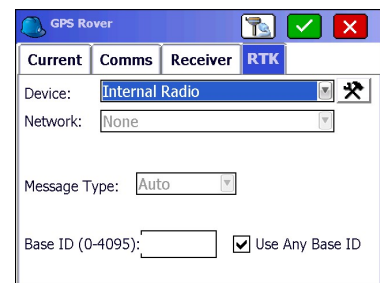
9) Power on the BRx7 Rover and make sure the **UHF antenna** is screwed in to bottom of the receiver

10) Tap Equip / GPS Rover and repeat Step #2 above to connect to the Rover by Bluetooth

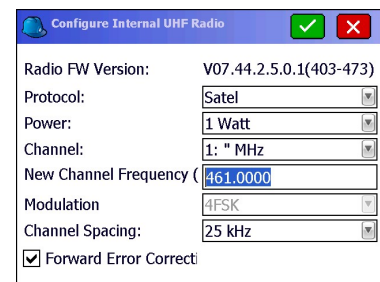
11) In the Receiver tab type in the Antenna height of 6.5617 feet set to “Vert” for vertical if you are using the 2 meter pole that comes with it



12) Tap the RTK tab and set it for "Device: **Internal Radio**" and make sure to check the box next to "Use any Base ID"



13) Tap the "wrenches" next to "Device: Internal Radio" and then tap the “**Advanced Settings**” button at the bottom. Tap green check to accept responsibility



14) Fill this screen out using the exact same settings as the ones you used for the base setup above then tap the Green Check to save your changes:

Protocol: **Satel**  
Power: **1 watt**  
Channel: 1: 0 Mhz  
New Channel Frequency: **461.0000**  
Channel Spacing: **25khz**  
Forward Error Correction: **Checked On**

*\*\*\*If you used a custom frequency for the base other than 461.0000 you will need to type in the same exact frequency you used for your Base Radio in the “New Channel Frequency” box below “1: 0MHz” to make sure your Rover radio is properly matched with the base radio*

15) Now you can tap the Green Check to initialize the Rover and go into Equip / Monitor Skyplot and check to see if you are getting a FIXED solution