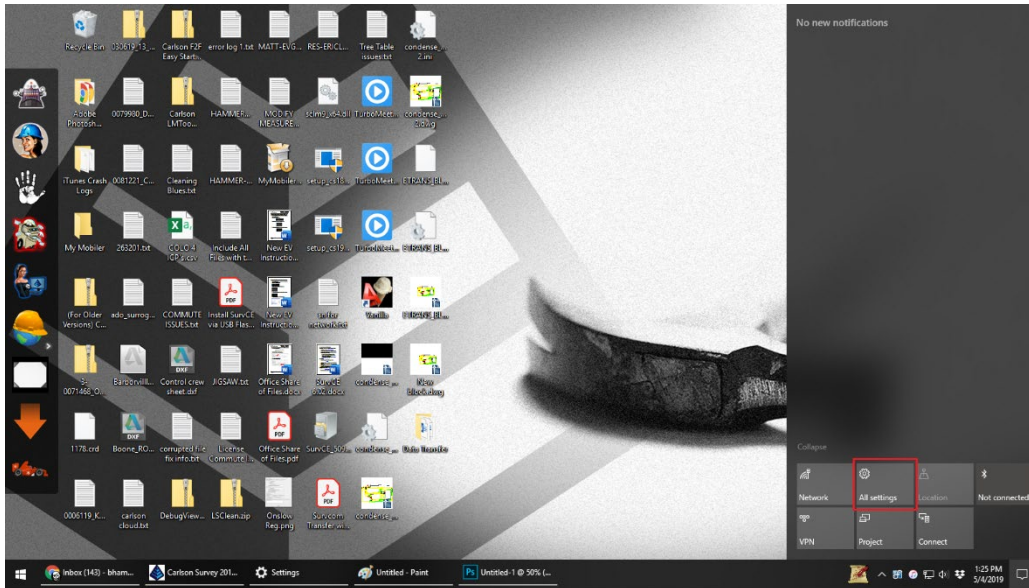


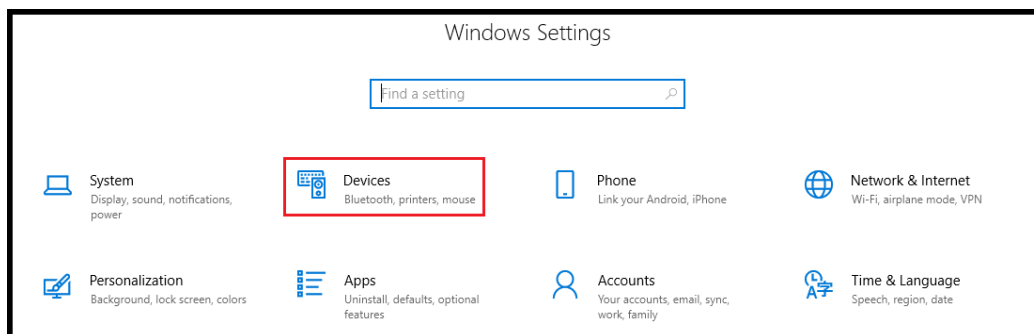
## Part 1: Connecting Your Data Collector to Your PC Via Bluetooth

### Activate Bluetooth on the PC/Laptop

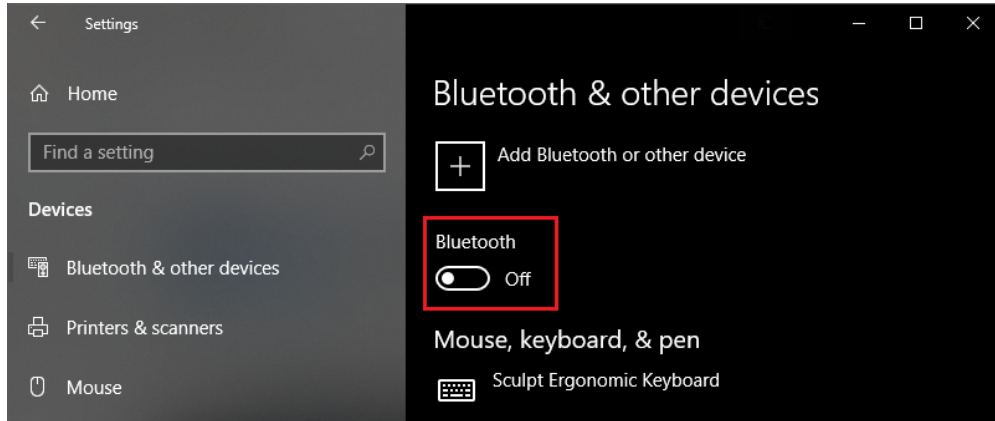
1. Tap on the **Action Center** box, which appears on the bottom, righthand edge of the screen, beside the Date and Time.
2. In the same Action Center location; Tap on **All Settings**.



3. Select **Devices** in Windows Settings.

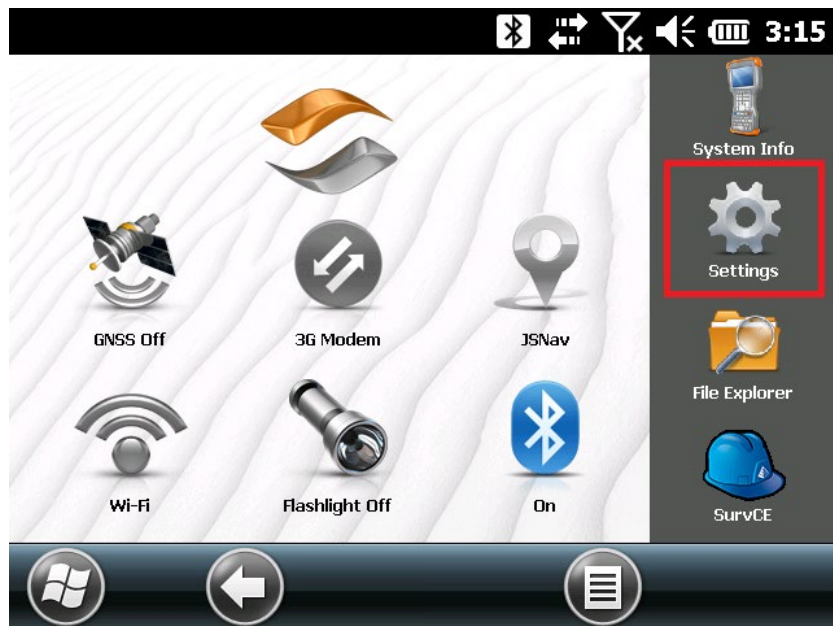


4. Turn Bluetooth on.



### Configuring Bluetooth On the Mobile Device

1. Exit out of SurvCE, by tapping on **Exit**, under the **File** tab.
2. Tap on the **Settings** icon, on the main screen of the data collector.



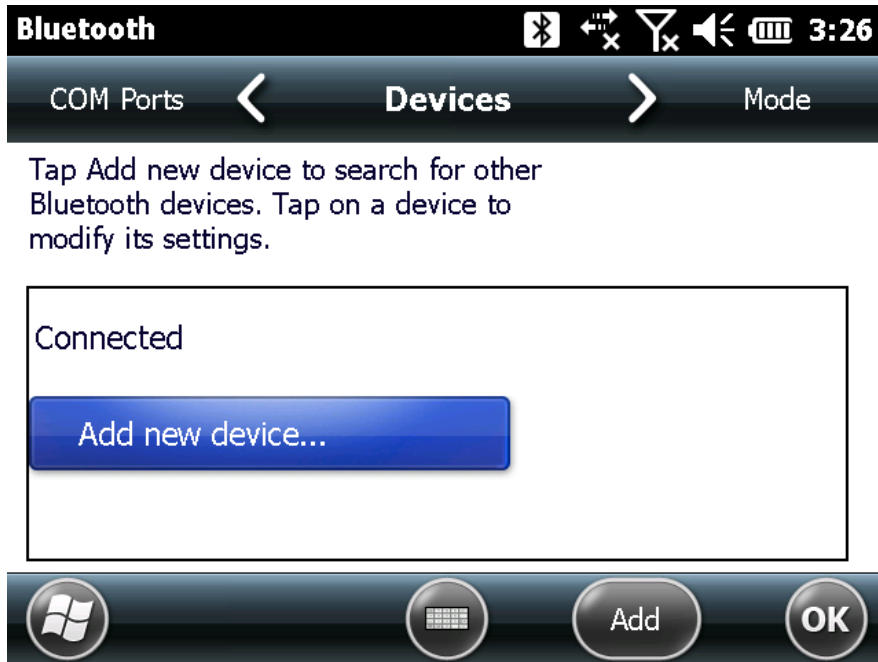
3. Tap on **Connections**.



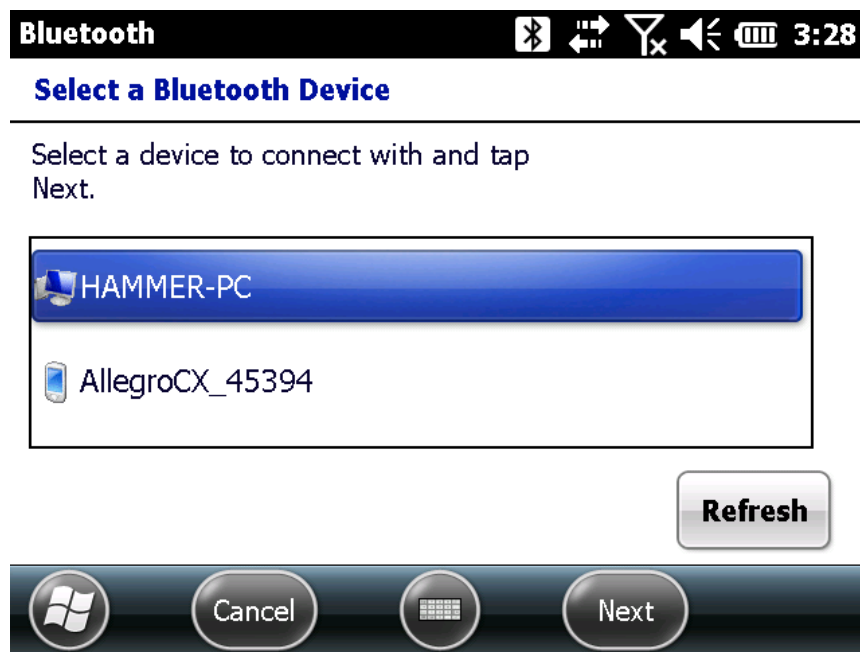
4. Tap on **Bluetooth**.



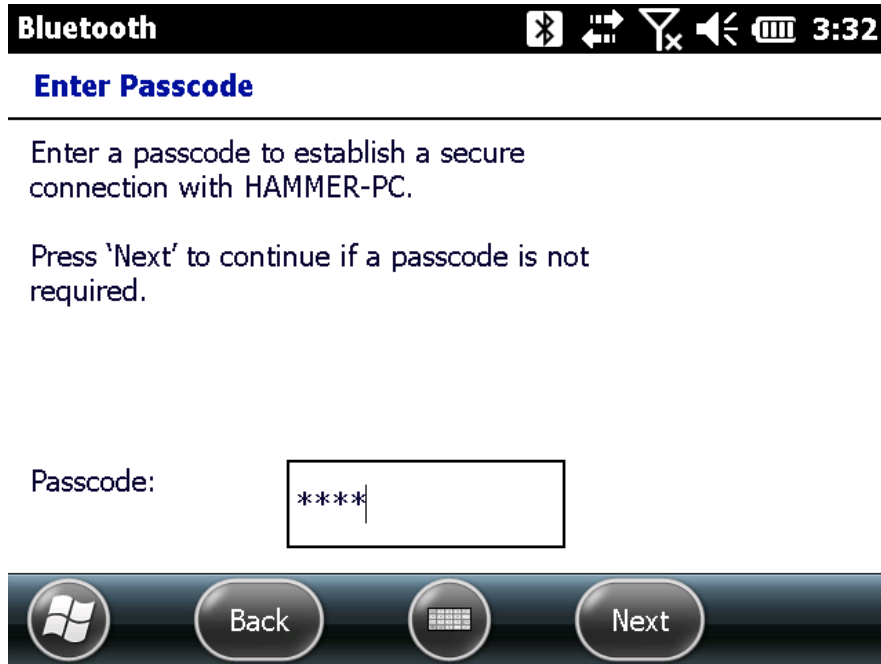
5. Tap Add new device.



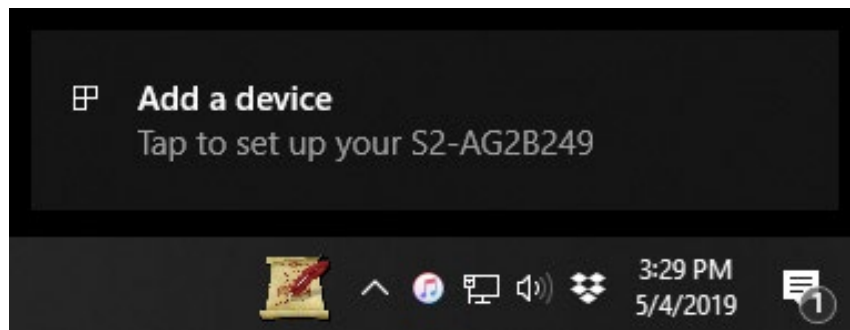
6. The data collector will search for you PC/Laptop. Highlight the desired computer. Then, Tap Next.



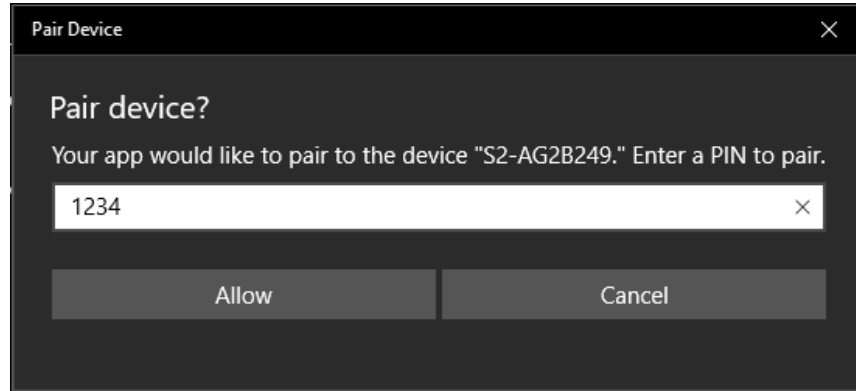
- The data collector will ask you to create a unique passcode to establish a secure connection with your PC/Laptop. Enter a Passcode. Then, tap **Next**.



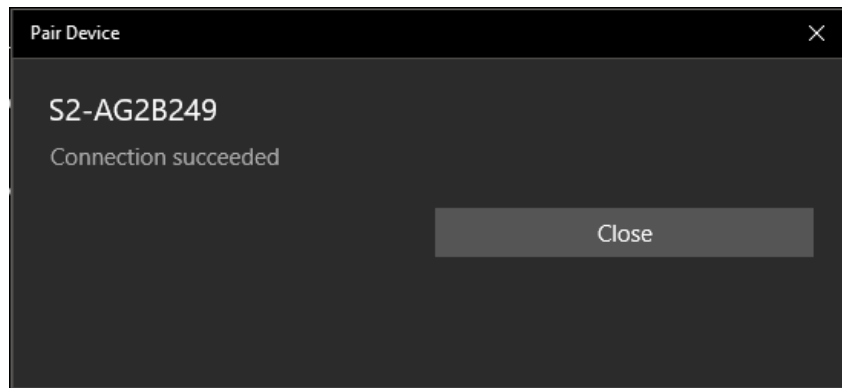
- This will elicit a response from your PC/Laptop. Click to **Add the device**.



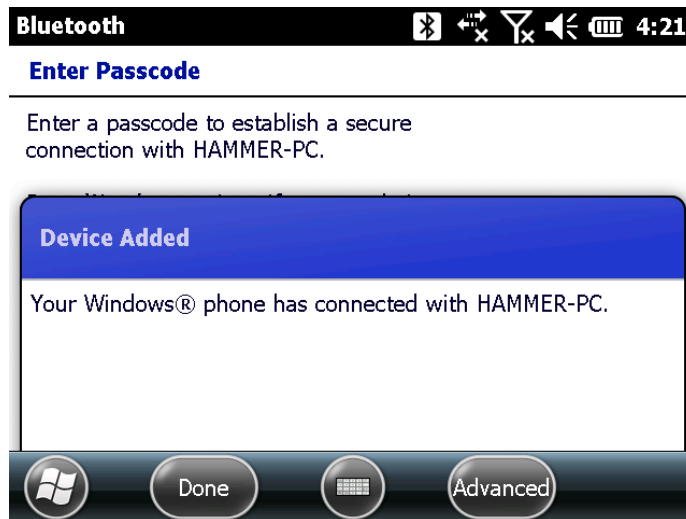
9. Enter the passcode to pair with the data collector. Then, tap **Allow**.



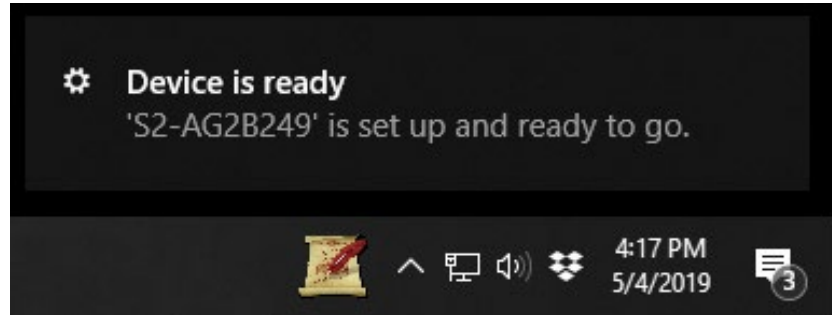
10. When successfully connected, Tap **Close**.



11. If the connection was successful, you will see the following message on your data collector.



Your PC/Laptop will show this message by the clock on the taskbar.



## **Part 2: Establishing An Activesync Connection with Windows Mobile Device Center**

1. Tap on the Windows Start Menu icon, on the bottom, left-hand corner of the data collector's main screen.

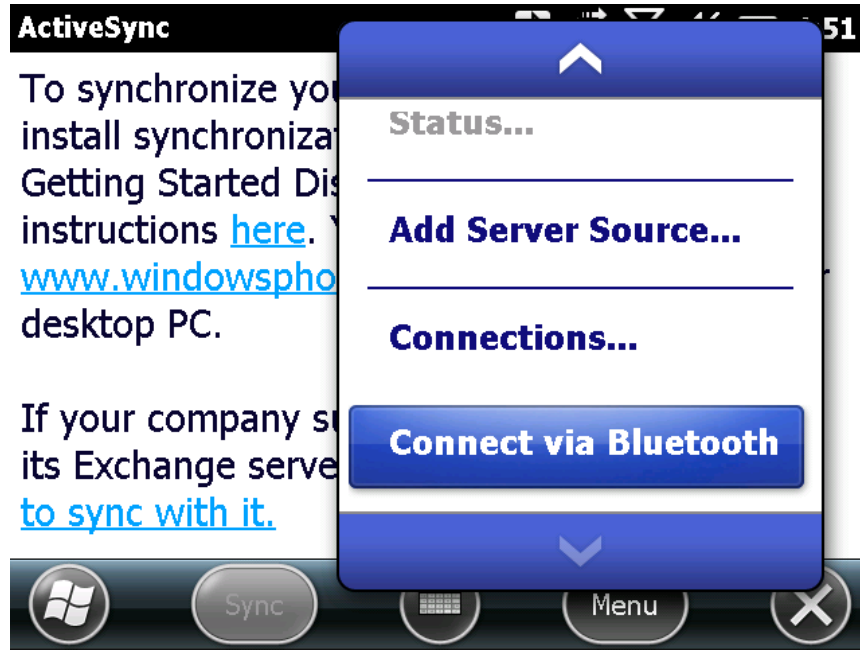


2. Scroll through the Start menu to find, and select, Activesync.

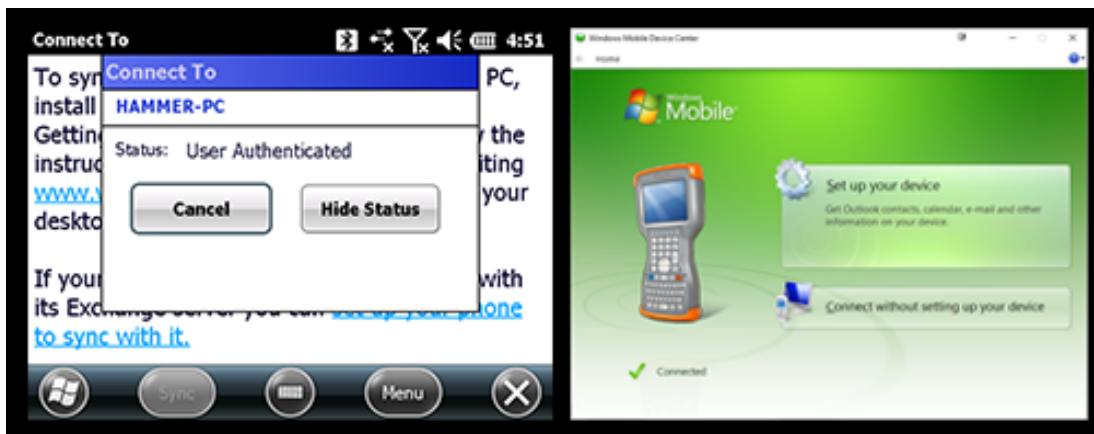




3. Tap on the **Menu** button, in Activesync. Then, scroll to select **Connect via Bluetooth**.



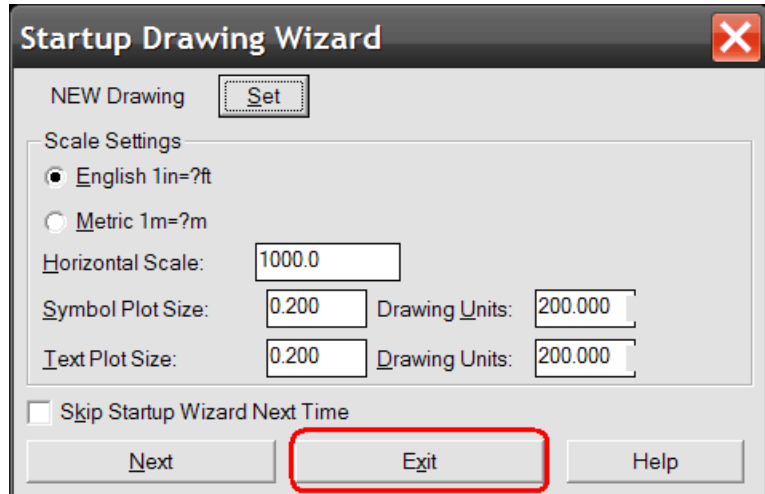
4. Once the data collector is “authorized”, the PC/Laptop will launch Windows Mobile Device Center.



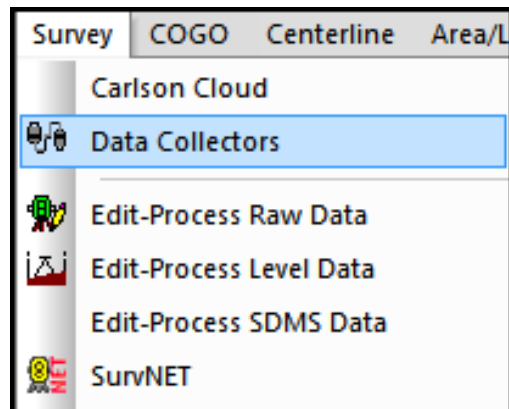
5. In WMDC, click on Connect without setting up your device. Then, minimize the program

### Part 3: Downloading Your Data To Carlson Desktop Software

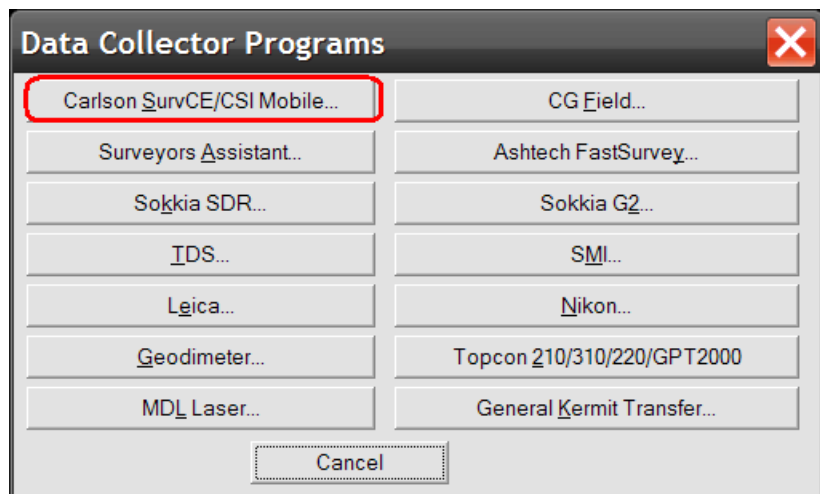
1. Open your Carlson desktop software program, and exit the Startup Drawing Wizard (if it launches).



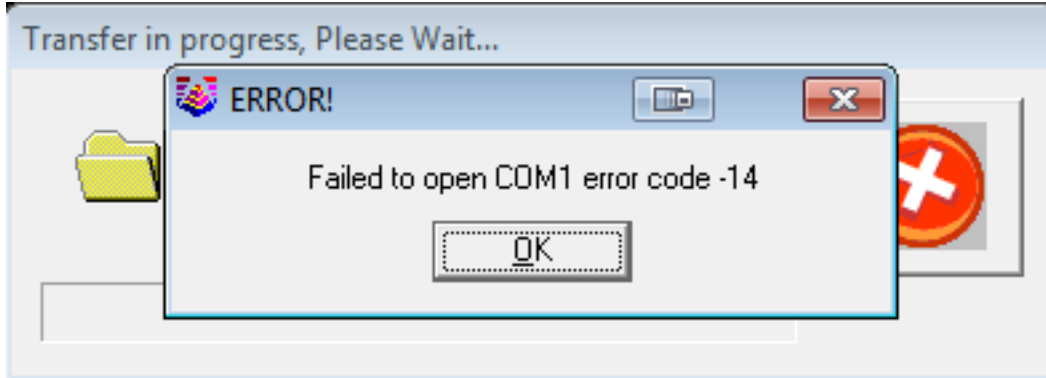
2. Click on the Survey drop-down and select Data Collectors.



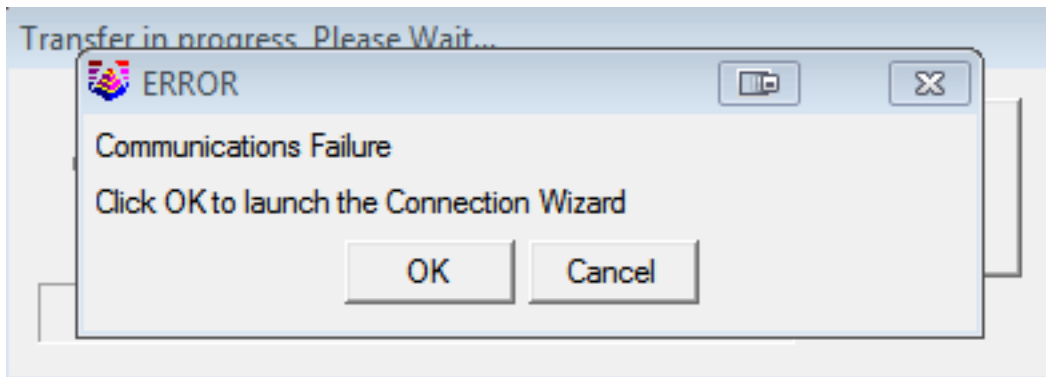
3. Select “Carlson SurvCE/CSI Mobile” as your data collector connection.



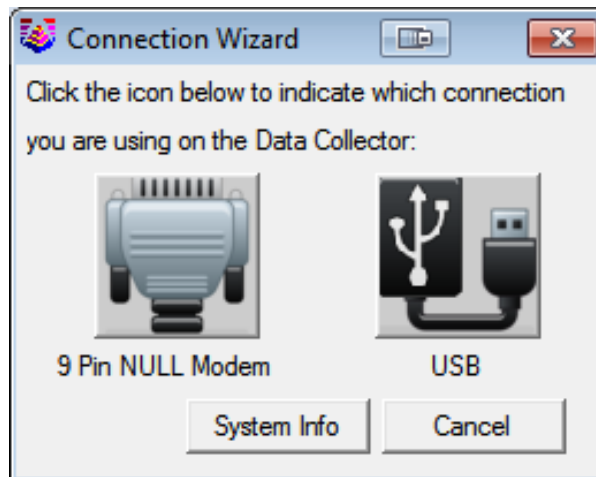
4. You may receive a communication failure message, initially. Click, OK to continue.



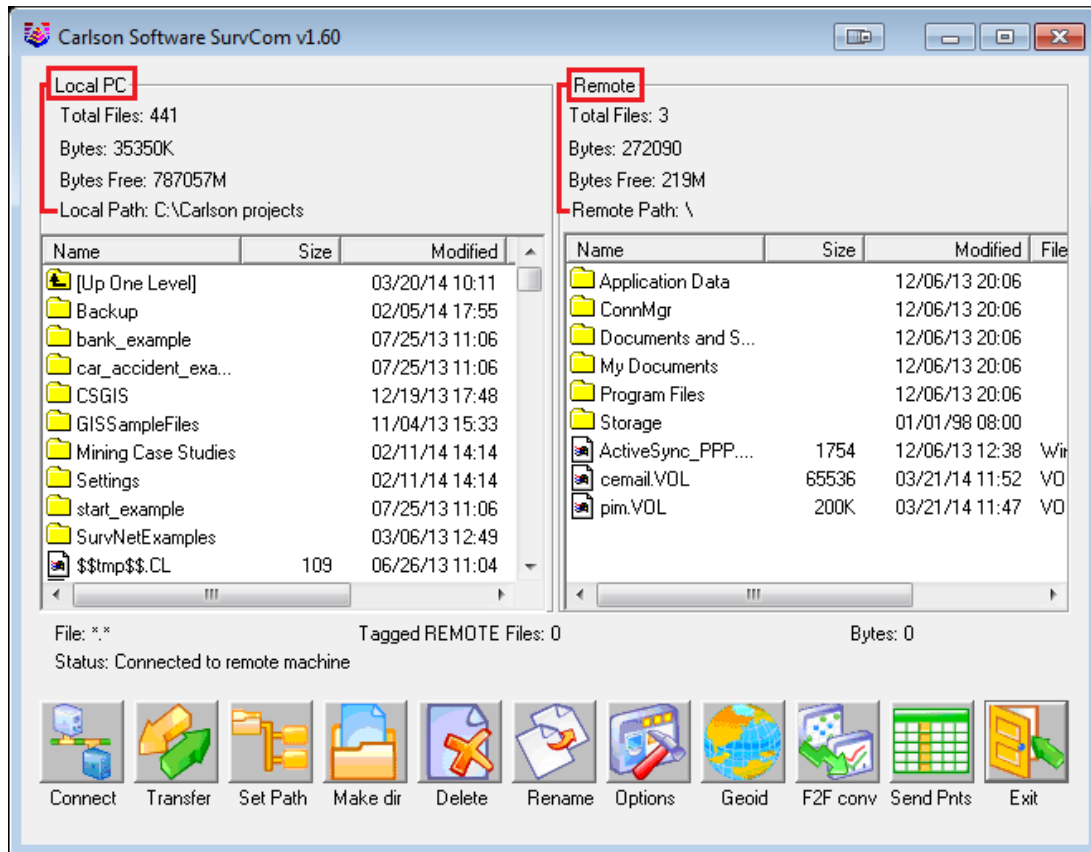
5. You will be prompted to “launch the Connection Wizard.” Please, click OK.






6. Click on the USB icon to allow the Connection Wizard to connect to your device.



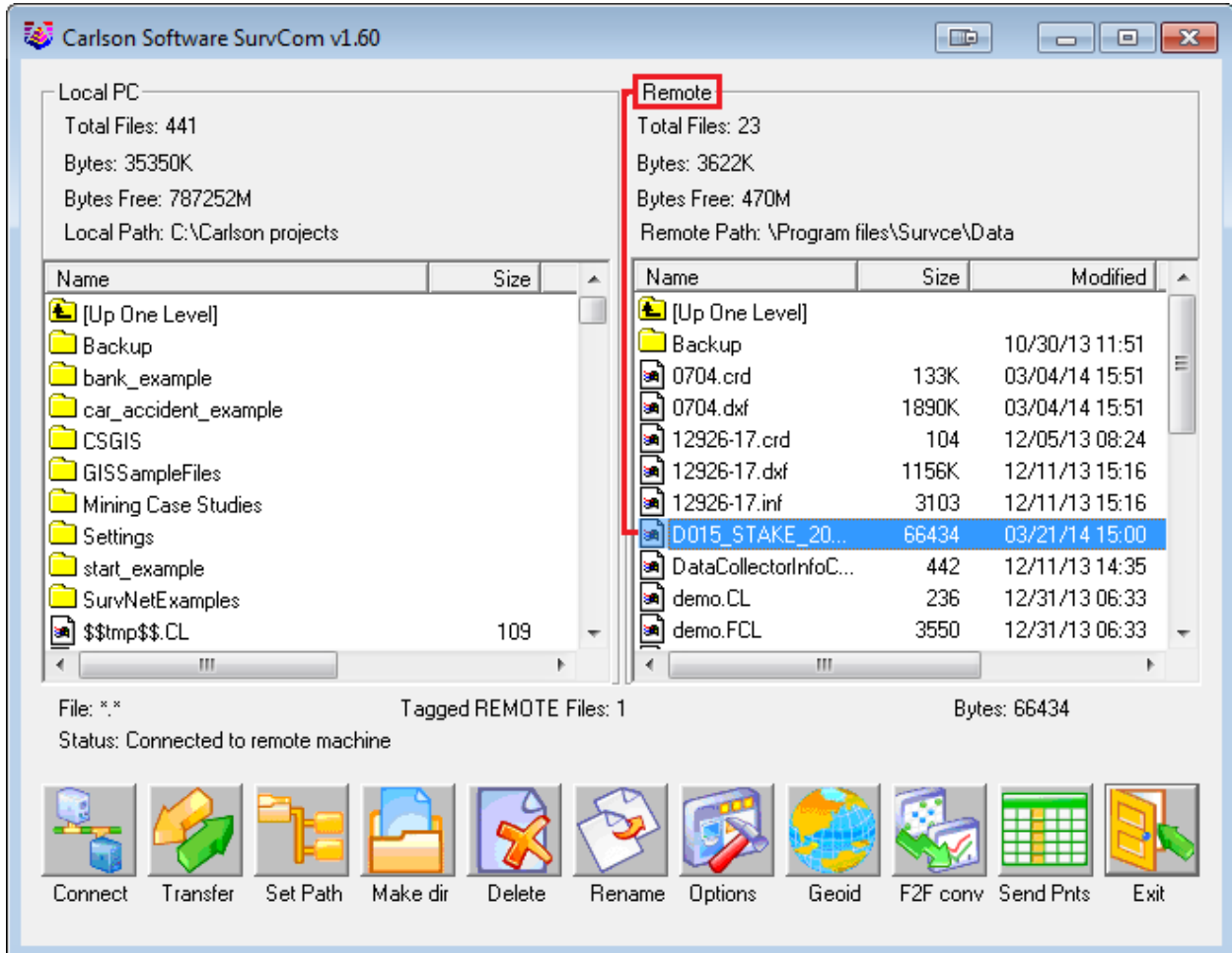
7. The SurvCom window is divided into two panes. Each window pane shows where the program is currently looking at data. This is referred to as the Data Path. The Local Path displays the data on your PC on the left-hand side. The Remote Path displays data in your data collector on the right-hand side. The Remote path should always be set to the DATA folder, of your data collector.



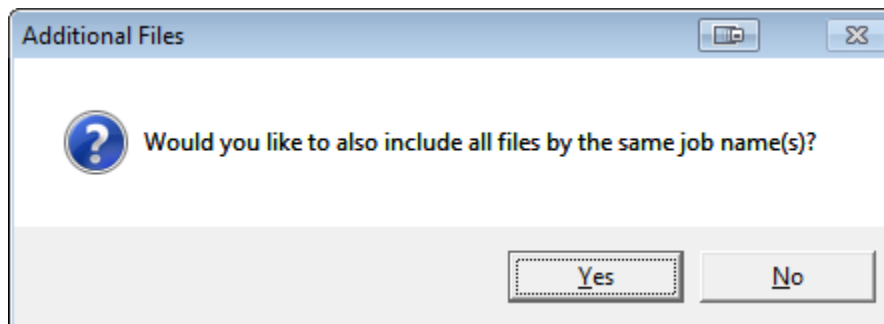
To set the path to the data folder:

- First, double-click on  Program Files
- Then, double-click on  SurvCE
- Then, double-click on  Data

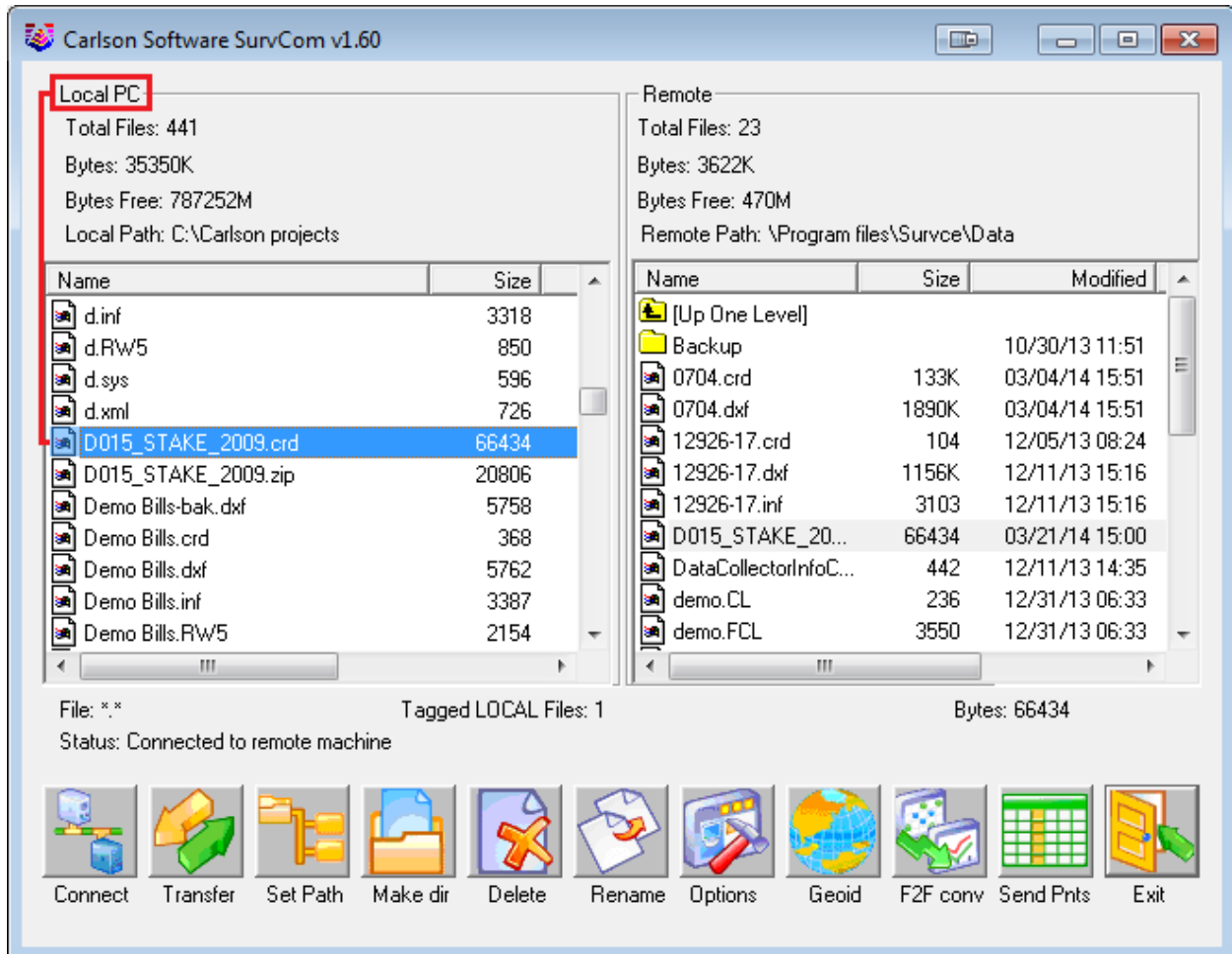
- Browse to the data file, that you wish to transfer. Then, double-click on the file name to transfer the file.



You will be asked if you would like to transfer all files by the same job name. This is advised; so as to keep a backup of your field data, on your PC.

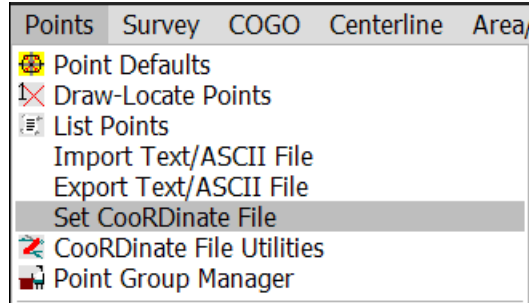


The file(S) will automatically transfer to the path (folder) specified under the heading of Local Path, on the left-hand side.

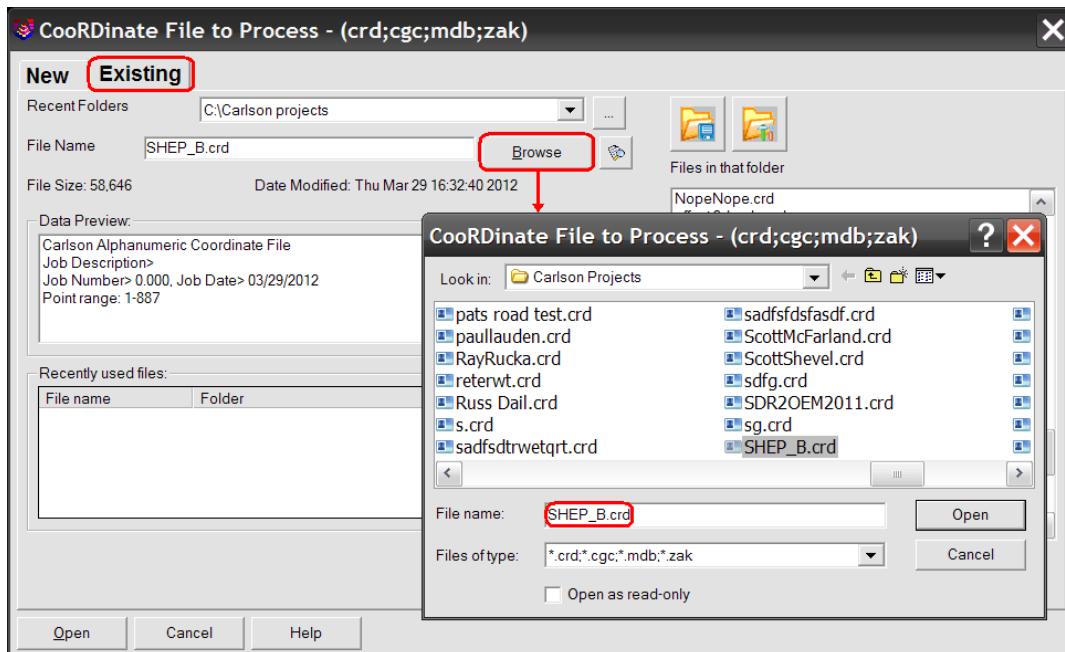


## Part 4: Drawing Your Collected Points

1. First, set your coordinate file as active, by clicking on the Points drop-down and selecting “Set Coordinate File”.



2. Click on the EXISTING tab, browse to your the CRD , and then click Open.



3. To draw the points from coordinate file, Click on the Points drop-down. Select “Draw-Locate Points.” Then, click on the “Draw All” button at the middle-bottom of the screen.

