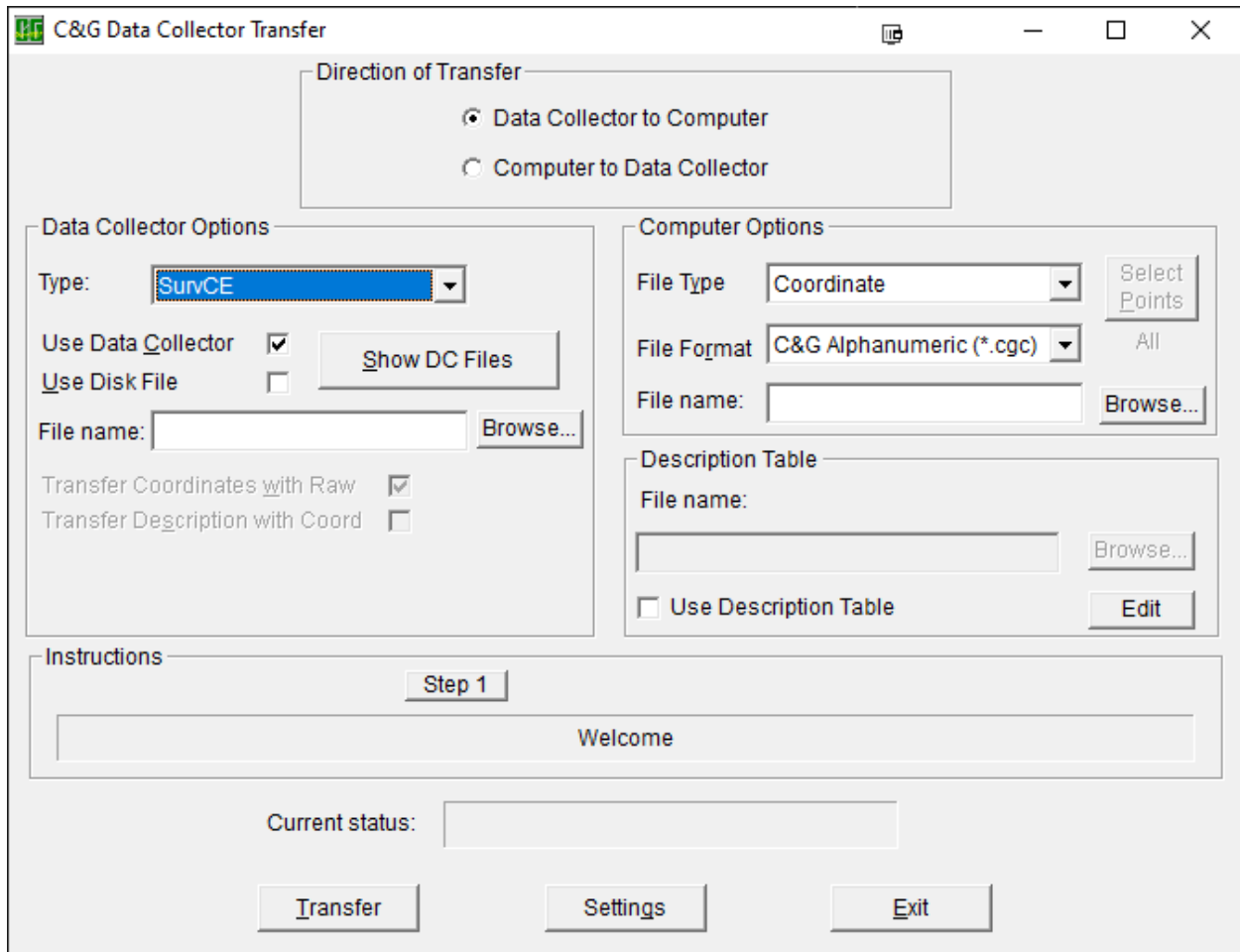


Direction of Transfer - Data Collector to Computer

C&G DATA COLLECTOR TRANSFER

1. Set your Data Collector Options Type to **SURVCE**
2. Click on the **Settings** button

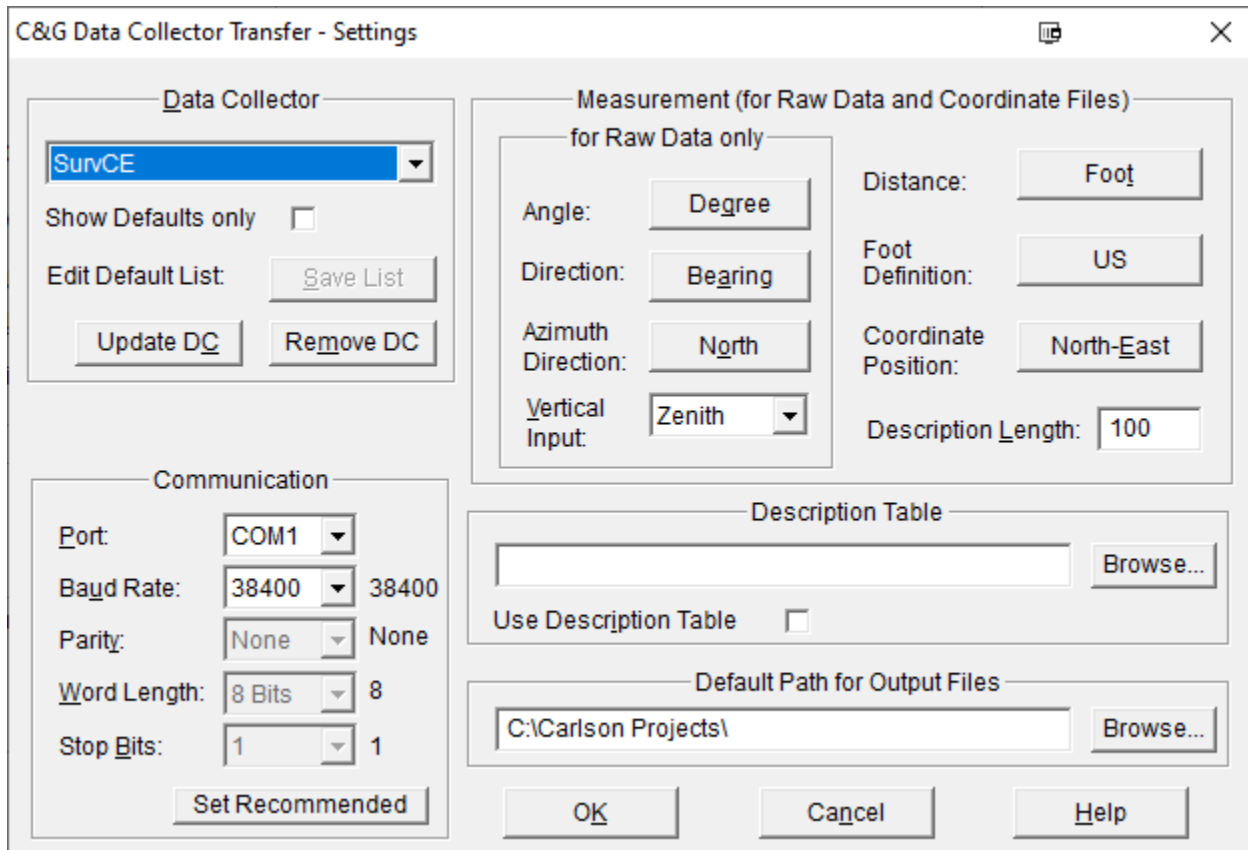


The screenshot shows the 'C&G Data Collector Transfer' dialog box. It is divided into several sections:

- Direction of Transfer:** Two radio buttons are present. 'Data Collector to Computer' is selected, while 'Computer to Data Collector' is unselected.
- Data Collector Options:** Includes a 'Type' dropdown menu set to 'SurvCE', a 'Use Data Collector' checkbox (checked), a 'Use Disk File' checkbox (unchecked), a 'File name' field with a 'Browse...' button, and two checkboxes: 'Transfer Coordinates with Raw' (checked) and 'Transfer Description with Coord' (unchecked). A 'Show DC Files' button is also present.
- Computer Options:** Includes a 'File Type' dropdown menu set to 'Coordinate', a 'File Format' dropdown menu set to 'C&G Alphanumeric (*.cgc)', a 'File name' field with a 'Browse...' button, and a 'Select Points' button.
- Description Table:** Includes a 'File name' field with a 'Browse...' button and a 'Use Description Table' checkbox (unchecked) with an 'Edit' button.
- Instructions:** A section with a 'Step 1' button and a text area containing the word 'Welcome'.
- Current status:** A text field.
- Buttons:** 'Transfer', 'Settings', and 'Exit' buttons are located at the bottom.

C&G DATA COLLECTOR TRANSFER - SETTINGS

3. Data Collector should be set to **SURVCE**
4. Ensure that your Port is set to the proper Com Port. This may be defined by a USB-Serial Adapter
5. Click on **Set Recommended**. Then, Click OK.



Data Collector

SurvCE

Show Defaults only

Edit Default List:

Measurement (for Raw Data and Coordinate Files)

for Raw Data only

Angle: Distance:

Direction: Foot Definition:

Azimuth Direction: Coordinate Position:

Vertical Input: Description Length:

Communication

Port: 38400

Baud Rate: 38400

Parity: None

Word Length: 8

Stop Bits: 1

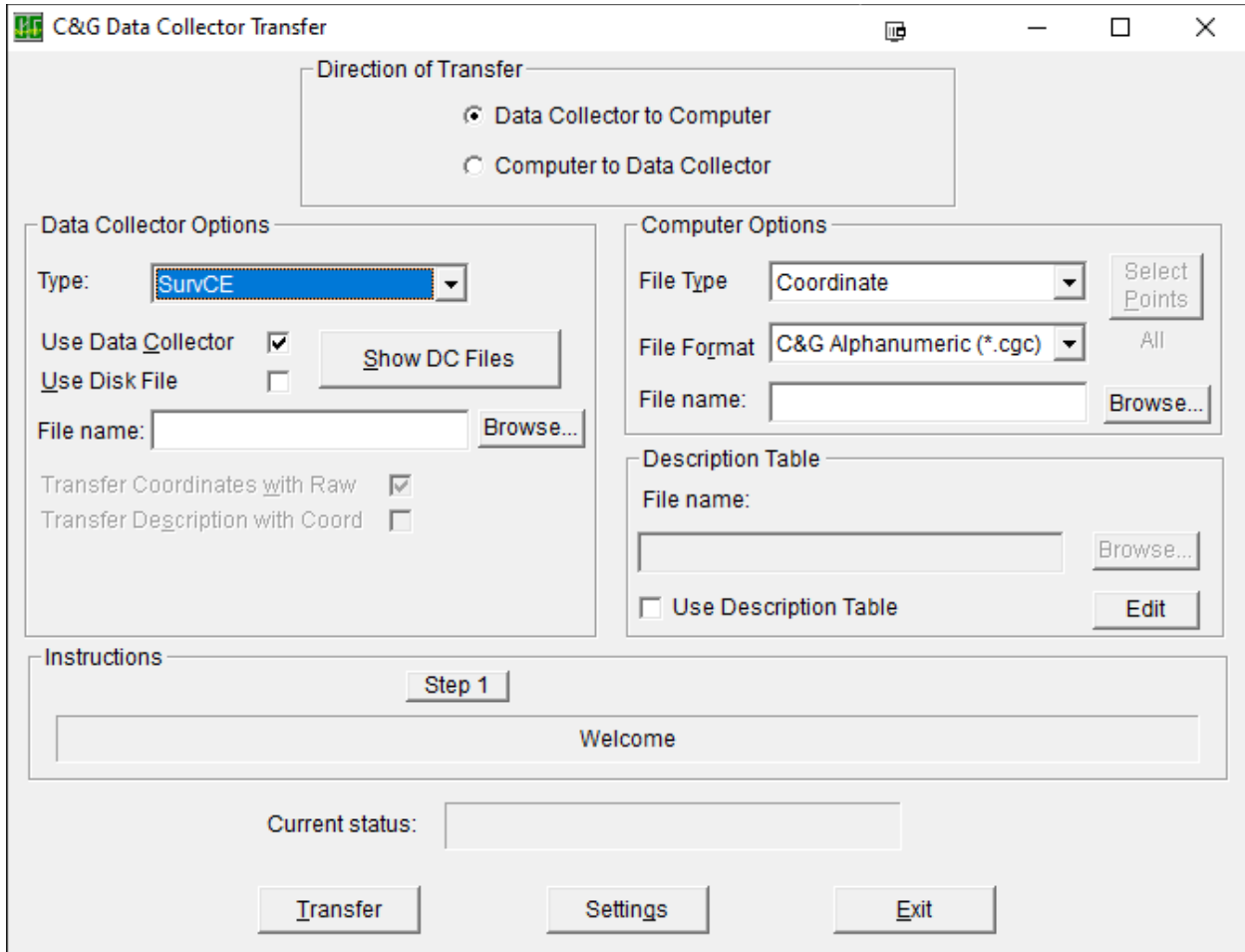
Description Table

Use Description Table

Default Path for Output Files

RETURN TO C&G DATA COLLECTOR TRANSFER

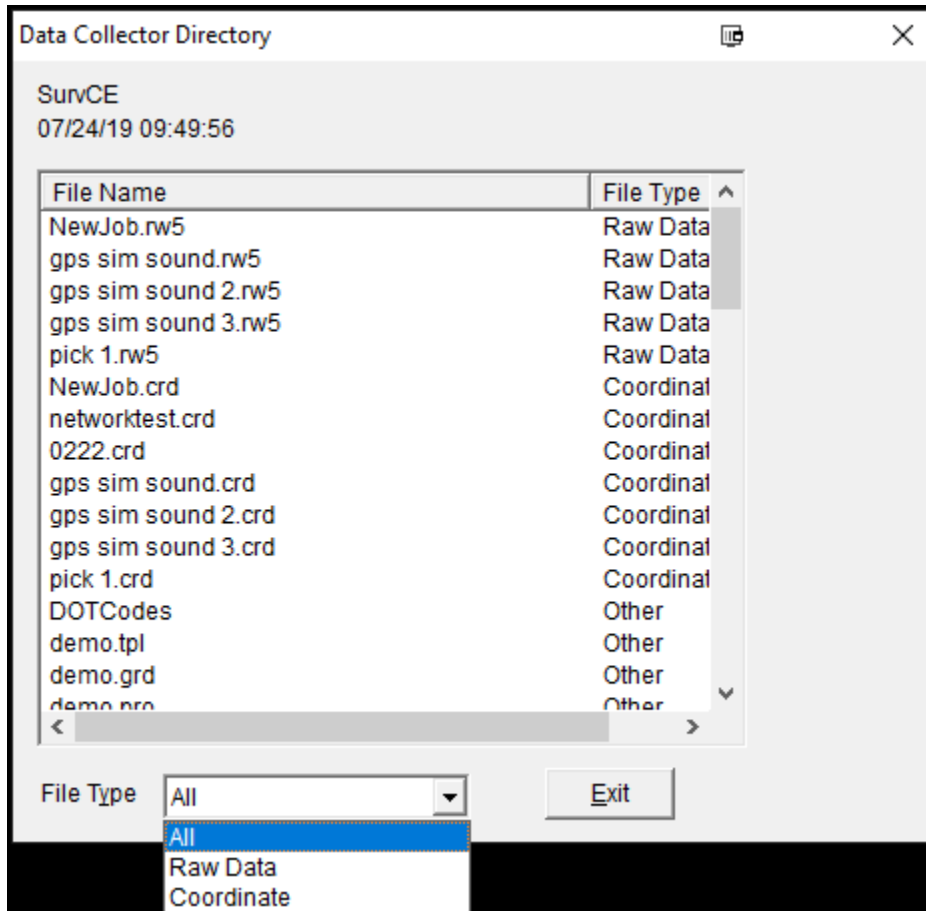
6. Under **Computer Options**: set the File Type with which you will be working
7. Under **Data Collector Options**: Click on **Browse** to view the files on the data collector



The screenshot shows the 'C&G Data Collector Transfer' application window. At the top, there are window control buttons (minimize, maximize, close). Below the title bar, the 'Direction of Transfer' section has two radio buttons: 'Data Collector to Computer' (selected) and 'Computer to Data Collector'. The main area is divided into two columns. The left column, 'Data Collector Options', includes a 'Type' dropdown menu set to 'SurvCE', checkboxes for 'Use Data Collector' (checked) and 'Use Disk File' (unchecked), a 'File name' field with a 'Browse...' button, and checkboxes for 'Transfer Coordinates with Raw' (checked) and 'Transfer Description with Coord' (unchecked). A 'Show DC Files' button is also present. The right column, 'Computer Options', includes a 'File Type' dropdown set to 'Coordinate', a 'File Format' dropdown set to 'C&G Alphanumeric (*.cgc)', a 'File name' field with a 'Browse...' button, and a 'Description Table' section with a 'File name' field and a 'Browse...' button. There is also a 'Use Description Table' checkbox and an 'Edit' button. At the bottom, there is an 'Instructions' section with a 'Step 1' button and a 'Welcome' message box. Below that is a 'Current status:' field. At the very bottom are three buttons: 'Transfer', 'Settings', and 'Exit'.

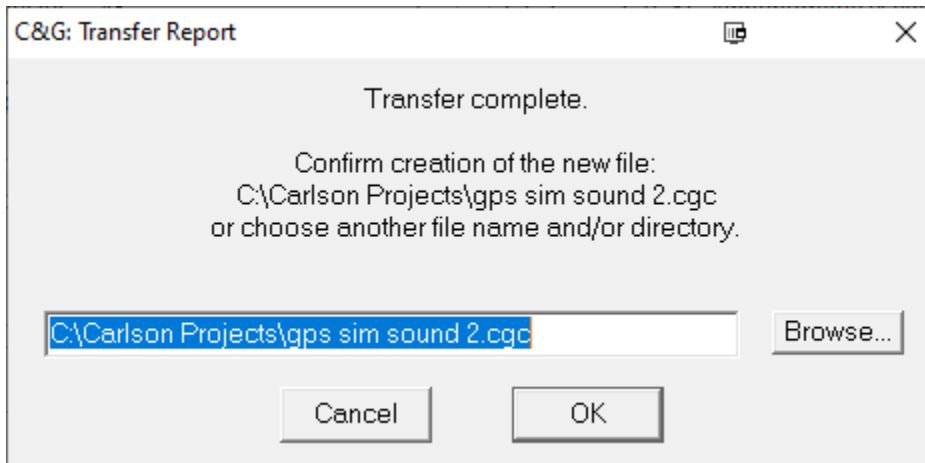
DATA COLLECTOR DIRECTORY

8. Highlight the file which you wish to transfer to your Computer. Then, Click OK.

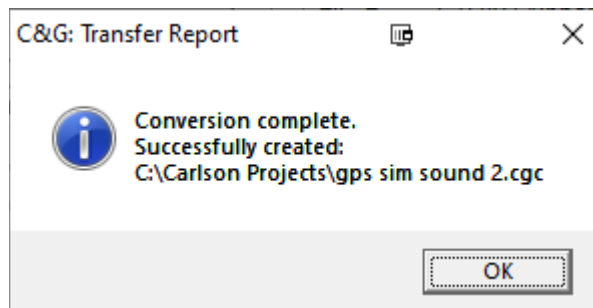


RETURN TO C&G DATA COLLECTOR TRANSFER

9. Click **Transfer**. When the transfer is complete, you will see the following message. Please take note of the data path where the file is to be saved, and make any changes you wish. Then, Click **OK**



10. The program will convert your Carlson .CRD into a C&G .CRD*



*C&G .CRD files require a .CGI file to work with. Carlson .CRD does not