

This is in regards to using SurvCE 6.02 or higher with a Carlson BRx6+ to log raw static when you are not sending UHF corrections from your Base to your Rover and you are just logging raw static with no RTK base corrections.

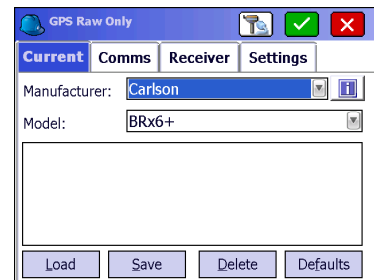
Here is the instructions for logging raw static to the memory of a BRx6+:

1) Power on your BRx6+ and then tap Equip / **GPS Raw Only**



2) Set it for "Manufacturer: **Carlson**" and "Model: **BRx6+**"

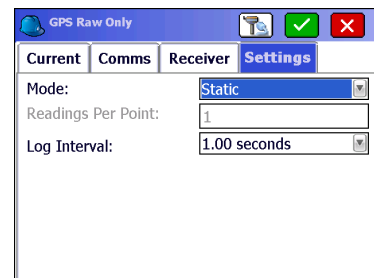
3) Then tap the "Comms" tab and set it for "Type: Bluetooth" and "BT Type: Windows Mobile". If you have already connected to this BRx6+ by Bluetooth then you can set the "Device:" to the serial number of your BRx6+



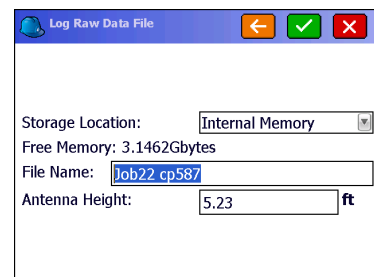
**** If your BRx6+ serial number is not shown in the "Device:" list then you will need to tap the "wrenches" icon to the right. Tap "Find Device" and follow the prompts to select the serial number of your BRx6+ base then tap the Bluetooth plug icon in the top middle*

4) Then tap the Receiver tab and tap next to "**Slant**" and measure up to the line where the top Blue cap meets the bottom Grey housing and type this in for your Antenna height

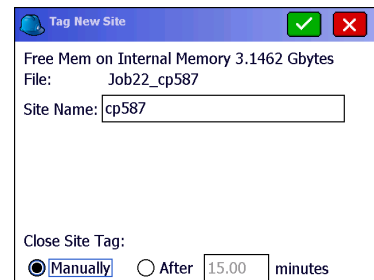
5) Tap the Settings tab and set it for "Mode: **Static**" and set it to "Log Interval: **1.00 seconds**" then tap the Green Check in the top right to connect to your BRx6+



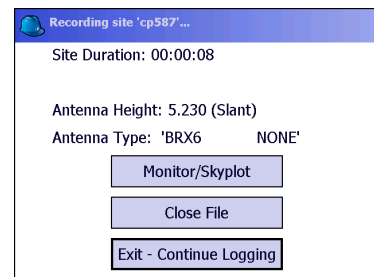
6) Set it to "Storage Location: **Internal Memory**" and type in a File Name that corresponds to the Job you are on and the Point you are currently setup over such as "Job22 cp587" without quotes then tap the Green Check



7) Type in your control point number again for the Site Name such as “cp587” without quotes. Then tap next to “**Manually**” in the bottom left to Set it for “Close Site Tag: Manually” then tap the Green Check.



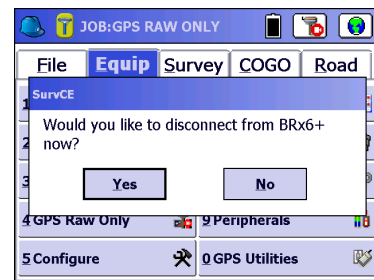
8) On the next screen tap “**Exit – Continue Logging**”



9) Then tap “**Yes**” when prompted to disconnect from your BRx6+

10) The Bluetooth light on your BRx6+ will go off but the *Green Light in the bottom right corner will flash once a second* indicating **it is recording Raw Static data to the internal memory** of the BRx6+

*** *At this point - you can power off your data collector and let the BRx6+ record the static data to its internal memory*



11) **After your BRx6+ has recorded the static data** for the length of time required (**such as 30 minutes or 2 hours**) you can turn your data collector back on and walk back over next to your BRx6+

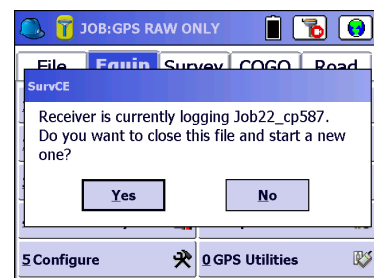


12) Tap Equip / **GPS Raw Only** and tap the Green Check in the top right to connect by Bluetooth.

13) You will be prompted “Receiver is currently logging... Do you want to close this file and start a new one?”

14) Tap “**Yes**” to close the static file and stop recording

15) Then tap the red “**x**” in the top right to cancel back out to the main menu. Now you can **power off** your BRx6+ receiver



16) The link below has instructions for **converting the file to RINEX**:

http://www.carlsonsw.com/support/knowledge-base/?action=display_topic&topic_id=1070