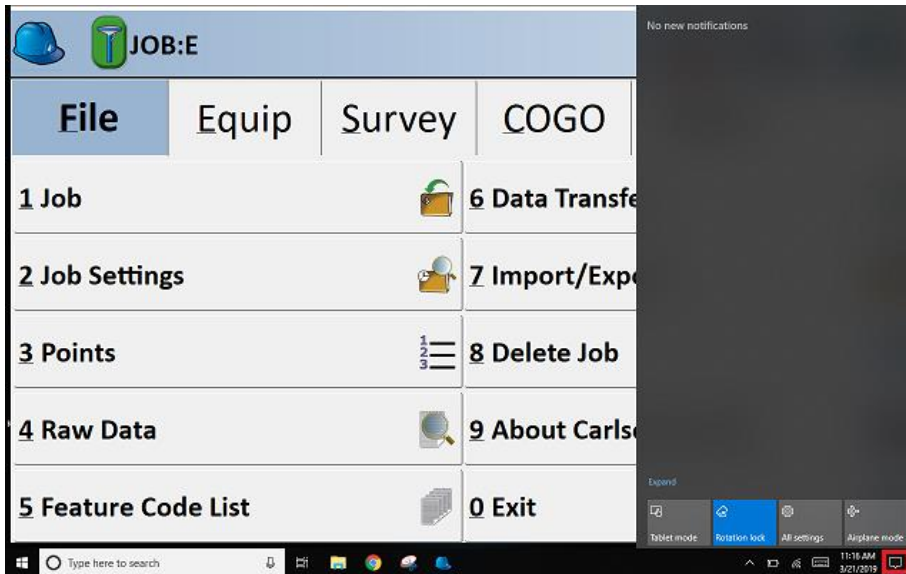
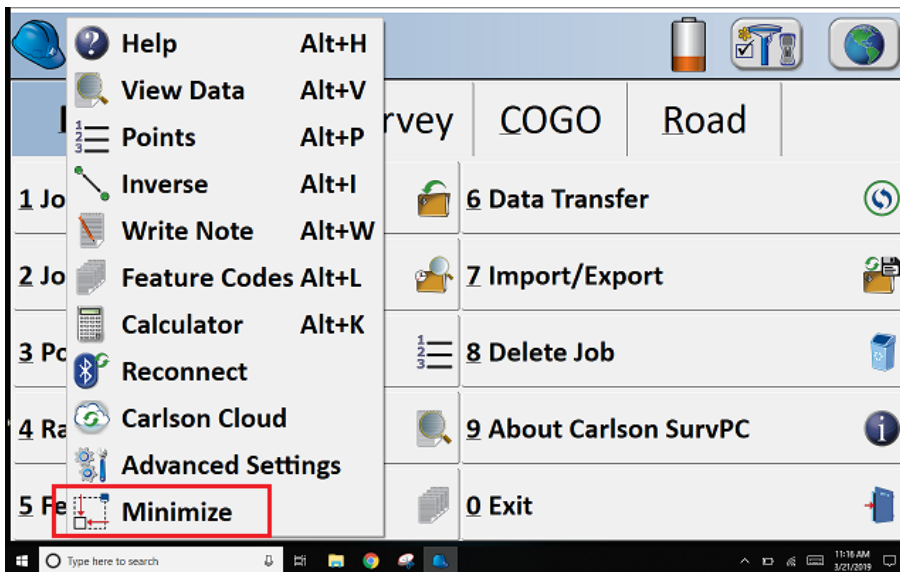


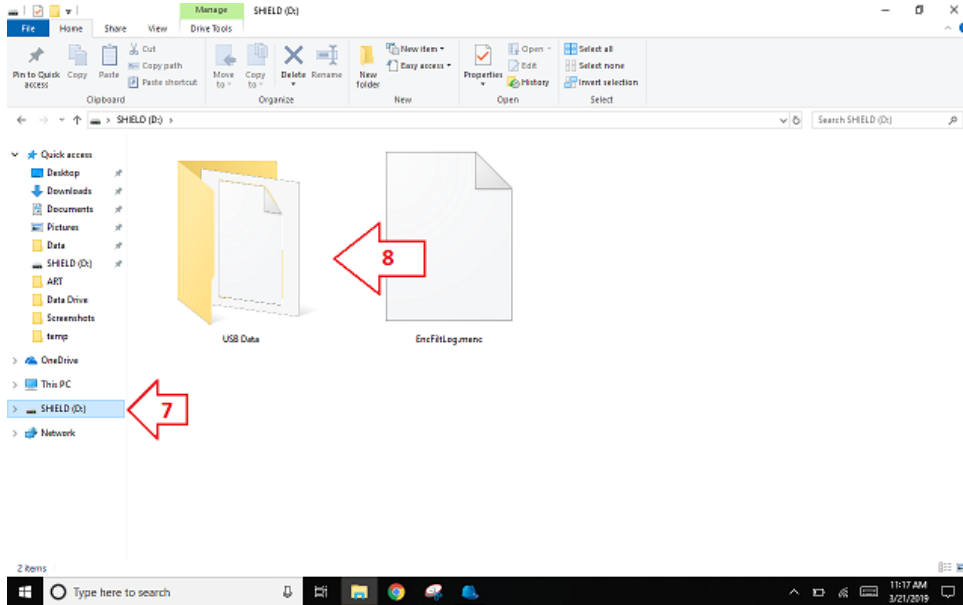
1. Create and name a folder in your USB Flash Memory drive, such as USB Data, while its connected to your computer.
2. Copy your drawing file to the USB Data folder.
3. Now, plug the thumbdrive into your tablet.
4. Tap on the Action Center box, on the bottom, right-hand corner or the screen. Then, tap on Tablet mode to turn it off. It will turn gray.



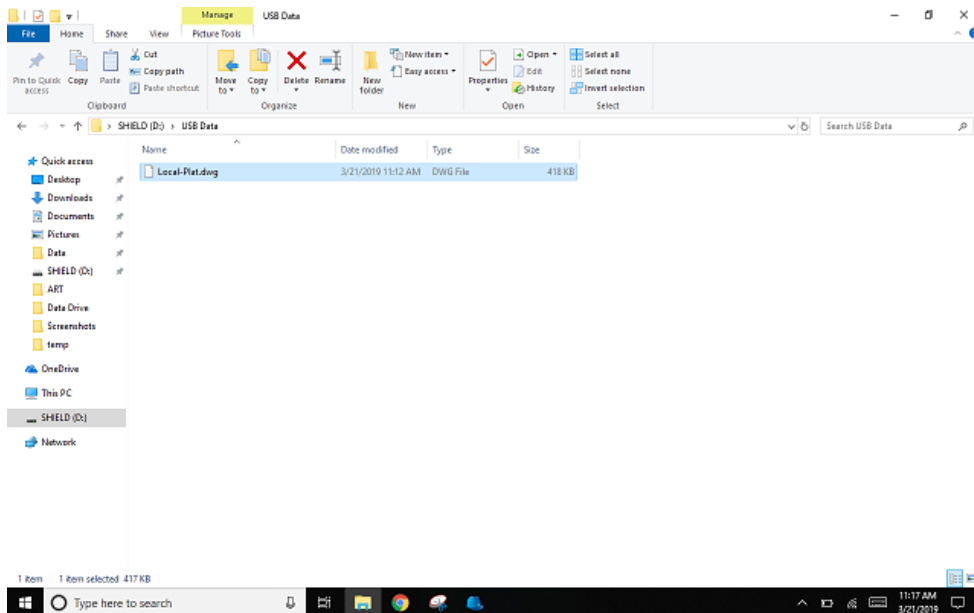
5. In SurvPC, tap on the Hardhat, on the top, left-hand corner of the screen. Then, select Minimize.



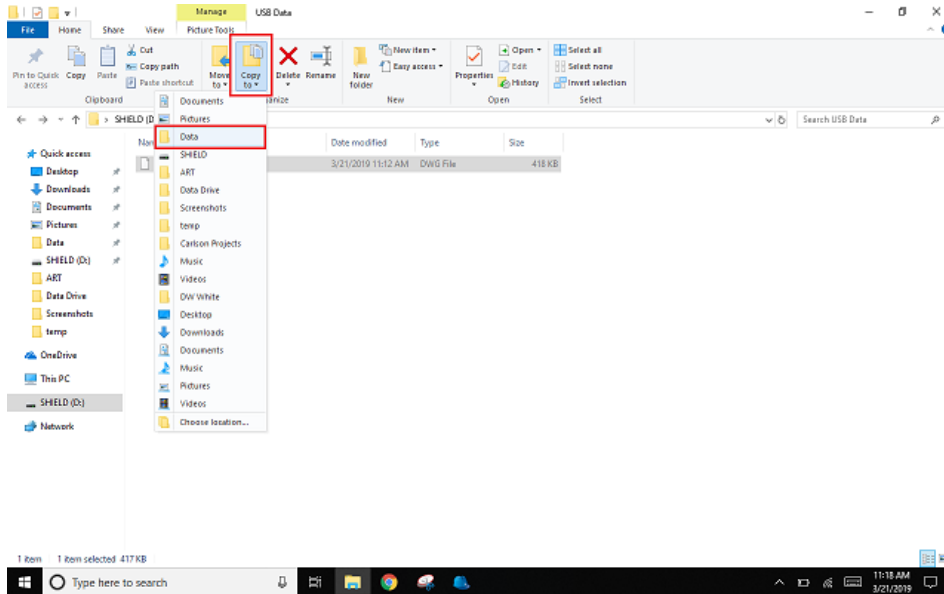
6. Tap on the Windows Explorer icon, on your taskbar.
7. Tap on your USB flash drive, which should be shown on the left-hand side.
8. Tap on your USB Data folder.



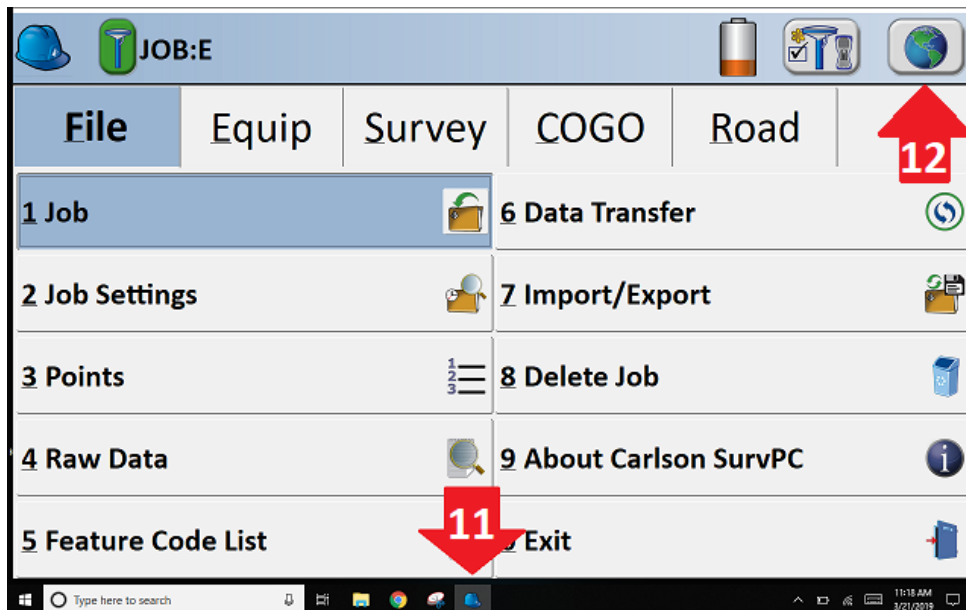
9. Tap on your drawing file, only once, to highlight it.



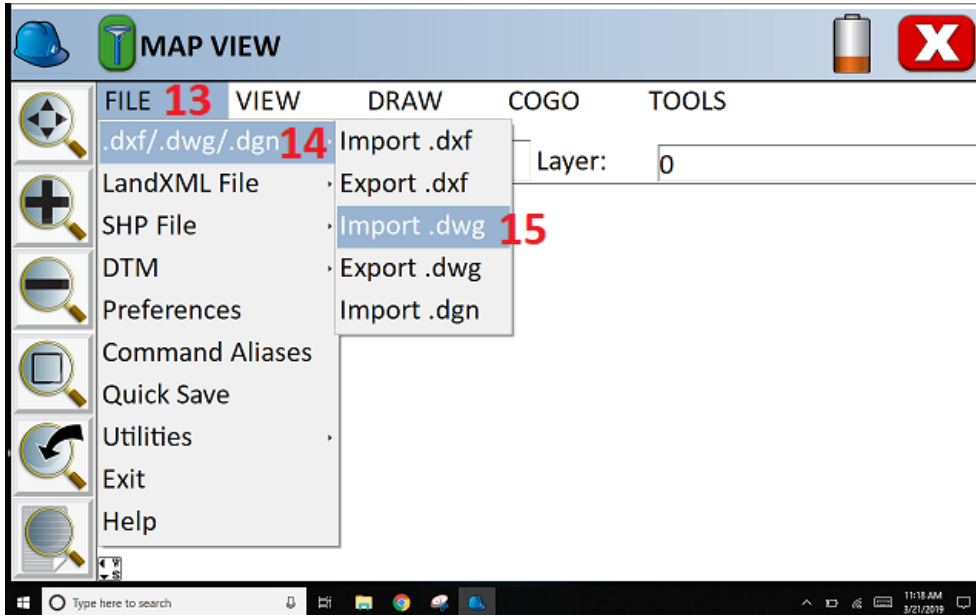
10. Tap on the Copy To option, at the top of the screen. Then, select the Data folder on your tablet. This is the default location for SurvPC to create your jobs.



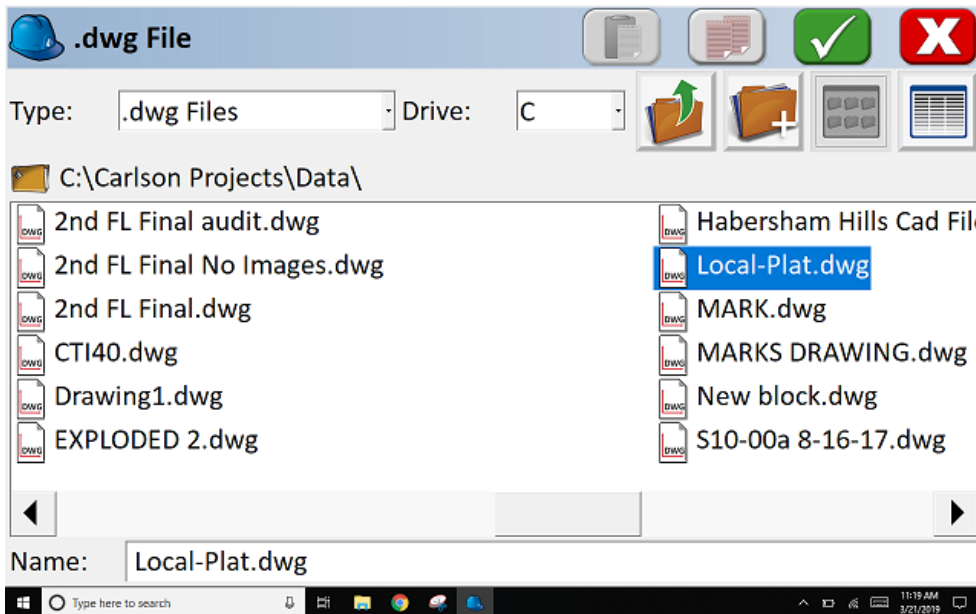
11. Tap on the SurvPC icon, on the taskbar, to go back to the program.
12. Tap on the Globe icon, on the top, right-hand corner of the program. This will open the MAP VIEW screen.



13. Tap on the File drop-down in Map View.
14. Tap on .dxf/.dwg/.dgn.
15. Tap on Import .dwg.



16. Browse to your drawing file. It should have been saved in C:\Carlson Projects\Data\. Highlight it. Then, tap the Green Checkmark to load the drawing.



17. When the program has finished loading your drawing, it will be visible on the screen.

