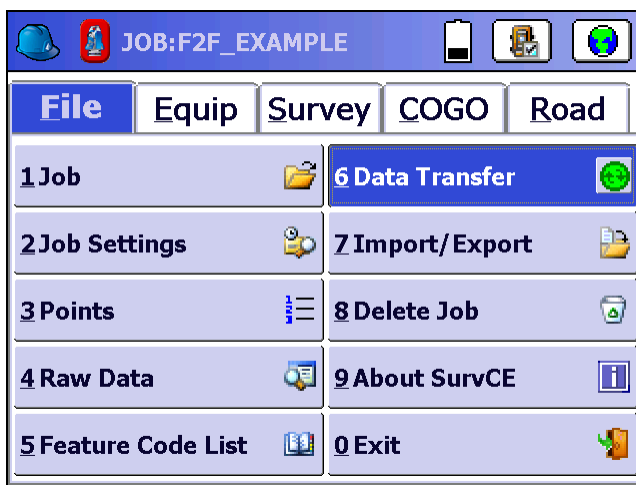
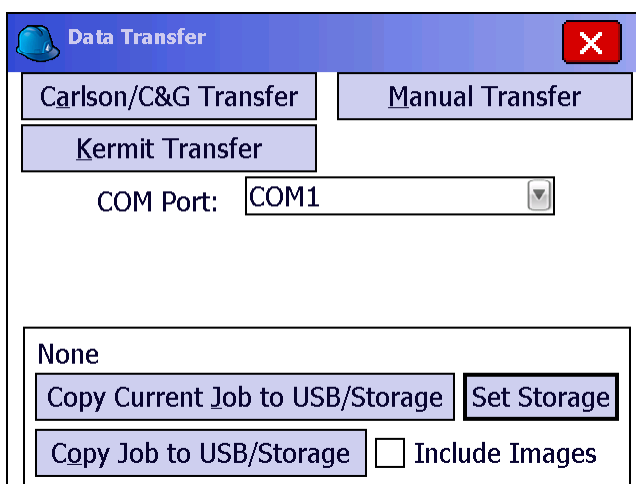


How To Transfer Data from SurvCE Onboard To A USB Thumb Drive

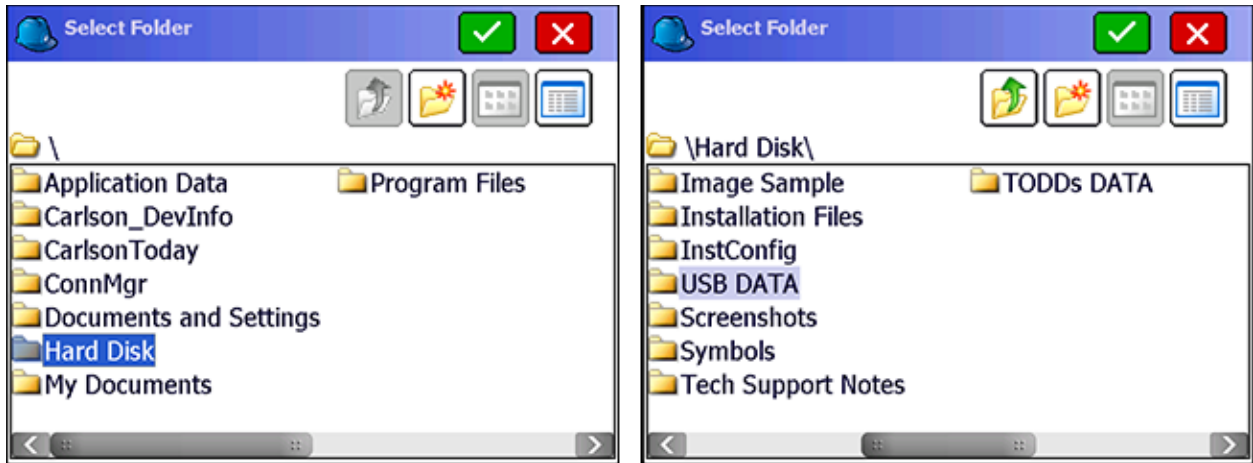
1. Create a folder in your USB Flash Memory drive such as “USB DATA”, while its connected to your computer
2. Insert the USB thumbdrive into the Surveyor data collector
3. Open the Job that you are working on in SurvCE
4. Tap File / Data Transfer



5. Tap “Set Storage”



6. Double-tap on Hard Disk. Then, double tap on the “USB DATA” folder you had created.



7. Tap the Green Check to set this as your destination folder
8. Now you can tap “Copy Current job to Folder” and it will transfer all the necessary CRD / RW5 and all other job files to the USB thumb drive

