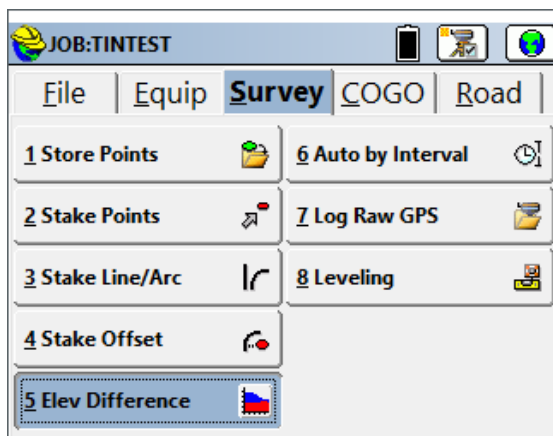


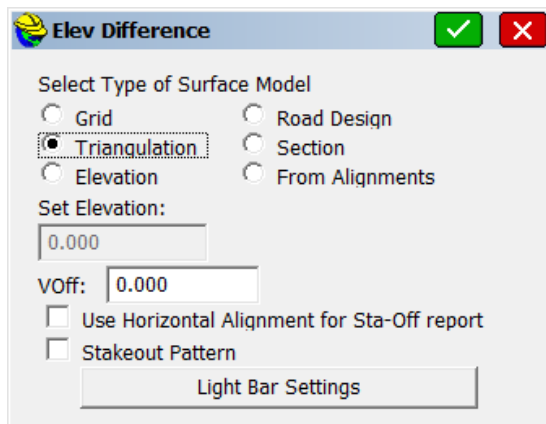
### How to Stake to A Surface in SurvCE

To stake a surface in SurvCE, you will want to use the Elevation Difference routine. This routine will report a cut/fill in comparison to a design surface at any location within a project. The Elevation Difference command will save cutsheet data if cutsheet files are named and made active within Job Settings, Stake tab. For any surface where a centerline is defined (Road Design and Section, or Grid/Triangulation/Elevation with centerline defined), the routine will not only report, but optionally store cuts, fills and centerline position data into an alignment-style cutsheet file. With no centerline defined, the Road, Grid and Elevation methods will store cut and fill data into a point-style cutsheet file.

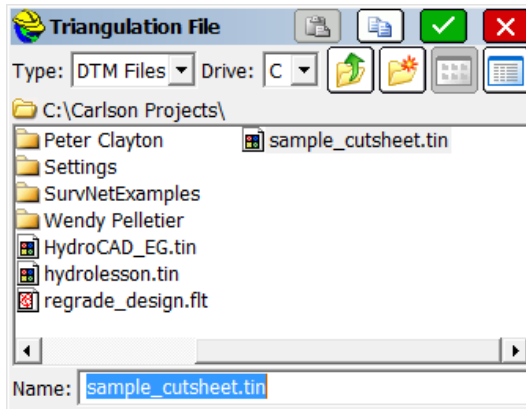
- 1 Go to the Survey tab and select #5, Elevation Difference.



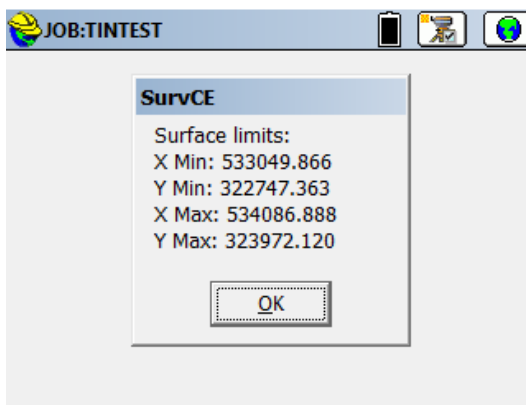
- 2 Select the Type of Surface Model that you will be using. Then, tap the Green Check Mark.



- 3 Browse to the Digital Terrain Model of your choice. Then, tap the Green Check Mark.



- 4 You will be shown the Surface limits of your DTM. Tap OK to continue.



- 5 The map screen will now show your location, as well as the Cut/Fill information based on the surface model.

