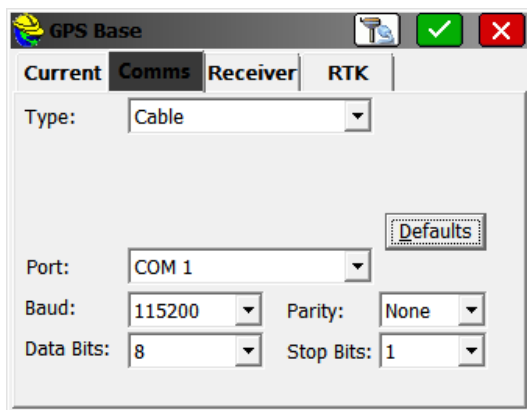
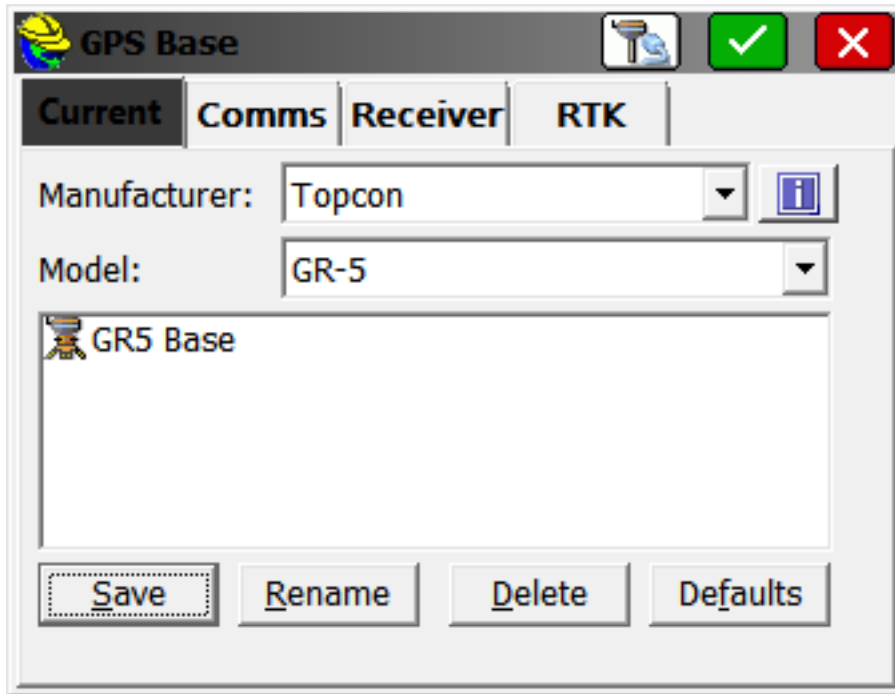
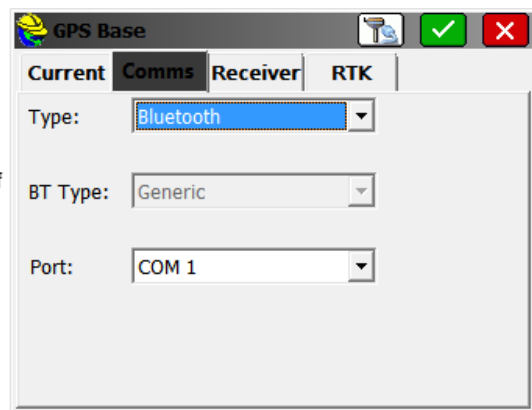


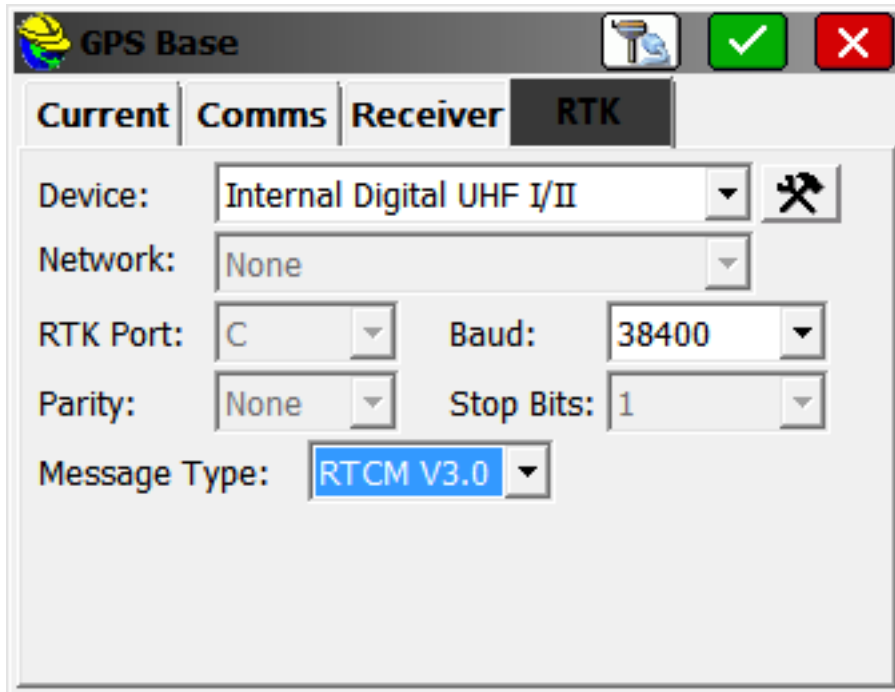
GR5 Base and Rover with Internal Digital UHF I/II

Base



When using a cable, Allow SurvCE to search for correct Baud, if 115200 is not correct





GPS Base [✓] [✗]

Current | Comms | Receiver | **RTK**

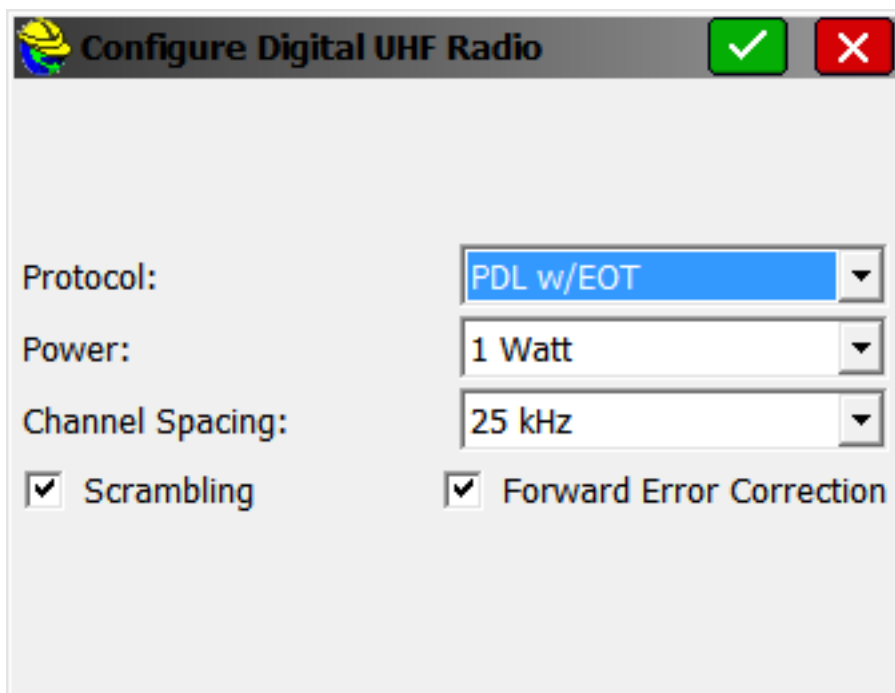
Device: Internal Digital UHF I/II [✎]

Network: None [v]

RTK Port: C [v] Baud: 38400 [v]

Parity: None [v] Stop Bits: 1 [v]

Message Type: RTCM V3.0 [v]



Configure Digital UHF Radio [✓] [✗]

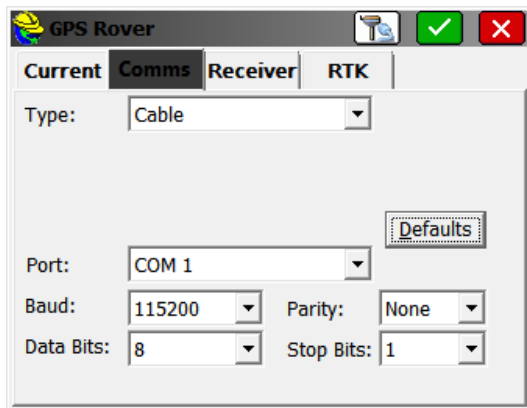
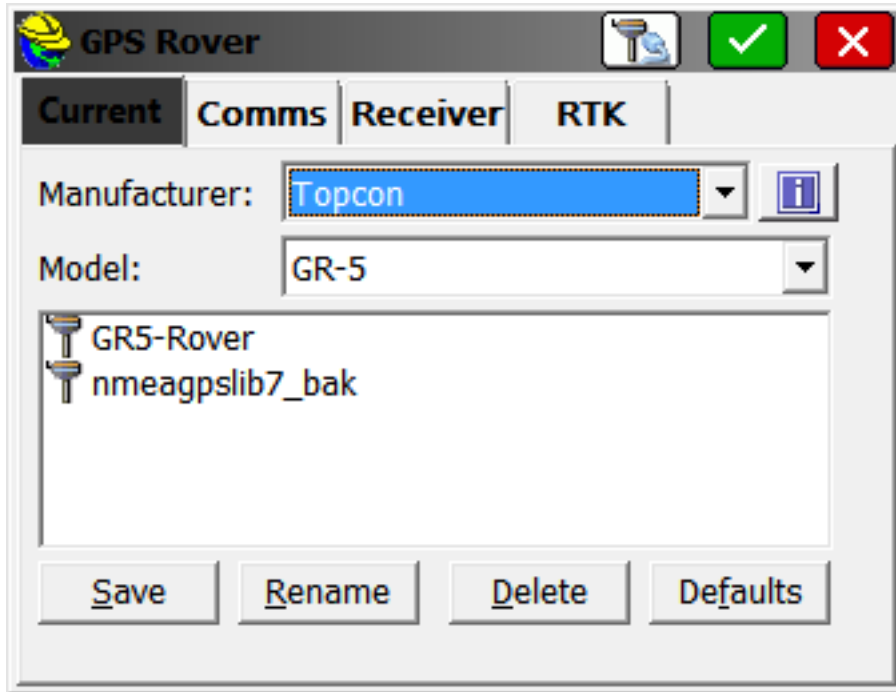
Protocol: PDL w/EOT [v]

Power: 1 Watt [v]

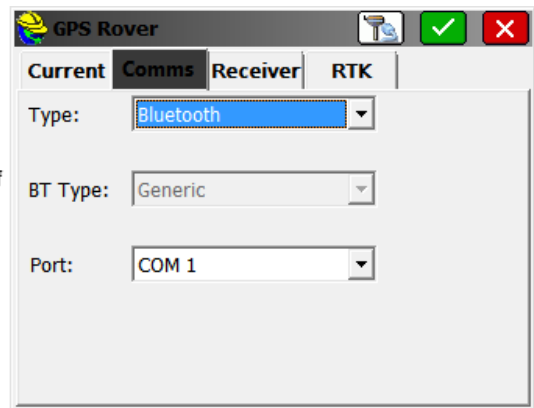
Channel Spacing: 25 kHz [v]

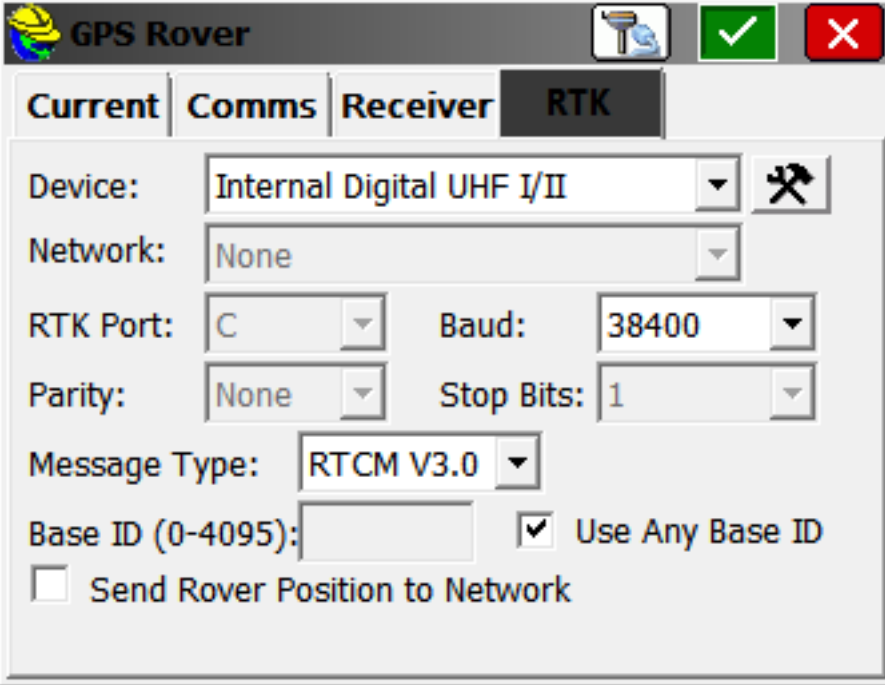
Scrambling Forward Error Correction

Rover



When using a cable, Allow SurvCE to search for correct Baud, if 115200 is not correct





GPS Rover

Current Comms Receiver **RTK**

Device: Internal Digital UHF I/II

Network: None

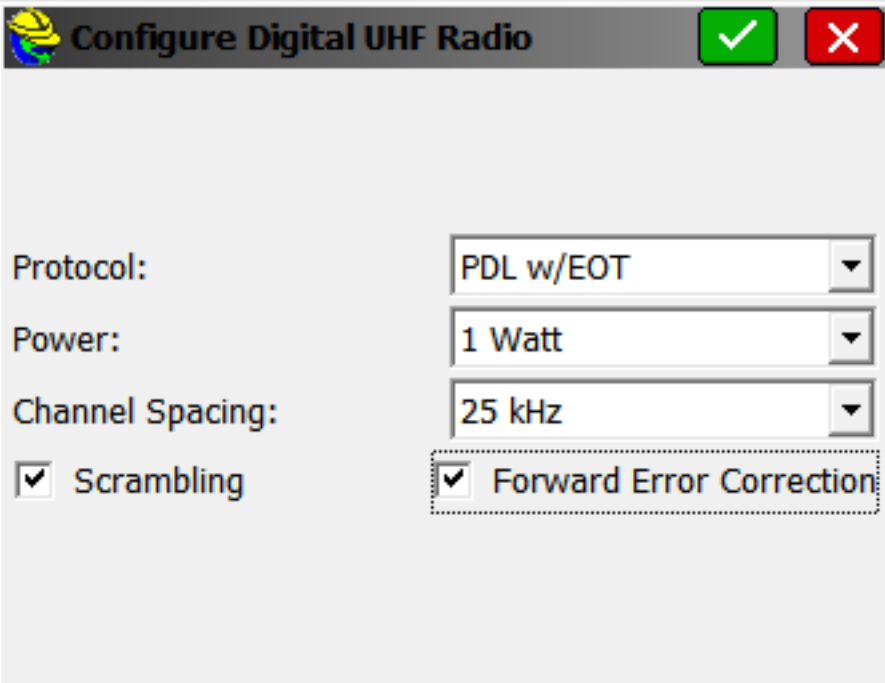
RTK Port: C Baud: 38400

Parity: None Stop Bits: 1

Message Type: RTCM V3.0

Base ID (0-4095): Use Any Base ID

Send Rover Position to Network



Configure Digital UHF Radio

Protocol: PDL w/EOT

Power: 1 Watt

Channel Spacing: 25 kHz

Scrambling Forward Error Correction