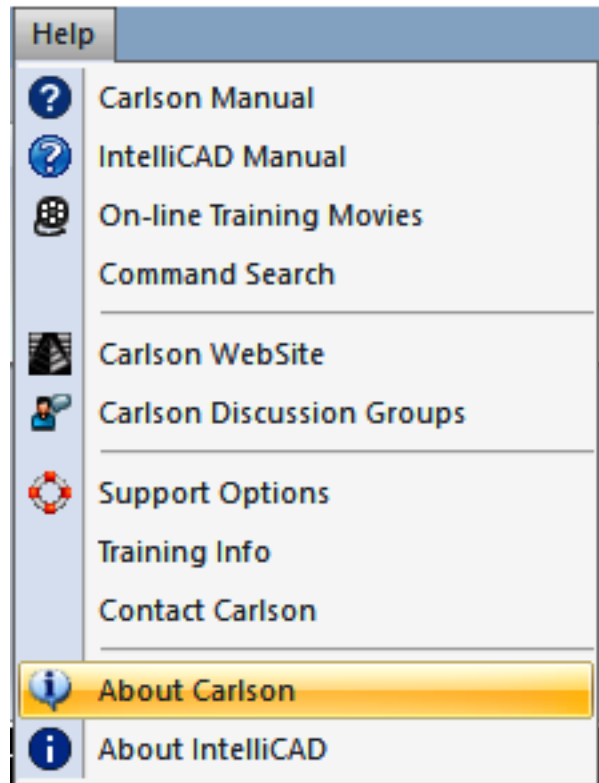


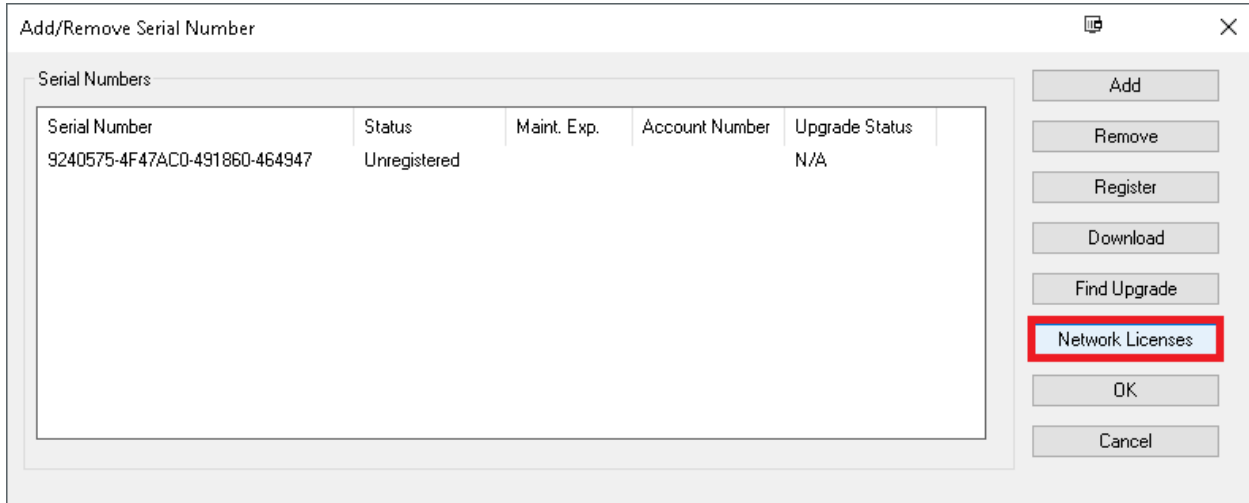
1. Click on the Help drop-down. Then, select **About Carlson**.



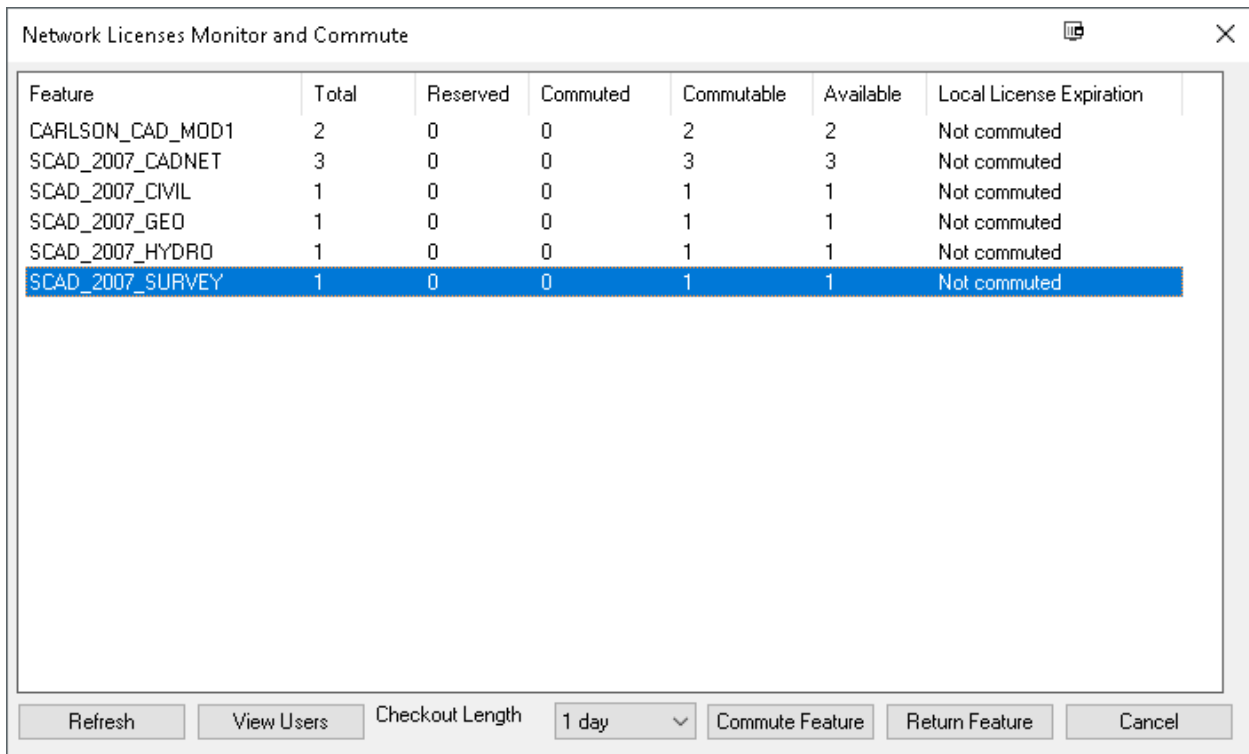
2. Click on the **Registration** button.



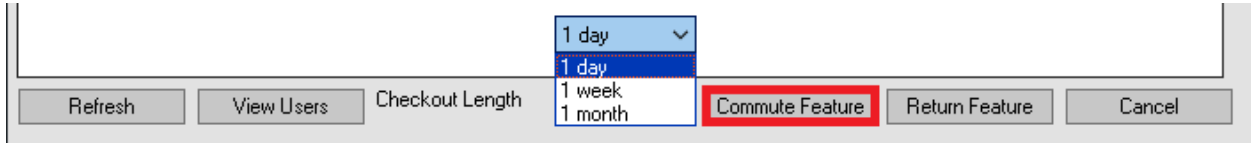
3. Click on the **Network Licenses** button.



4. The **Network Licenses Monitor and Commute** utility shows which licenses are available, as well as, which licenses are in use.



- Highlight the Module which you intend to “check out”. Though the module names show 2007, they are forward compatible. Meaning, that they work with the latest versions of Carlson’s software.
- Use the **Checkout Length** drop-down to set the number of days for the commuted license. Then, click on **Commute Feature**. You may commute the license for 1 day, a week (7 days), or a month (30 days).

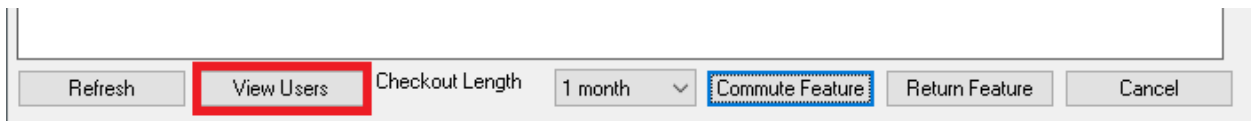


- Once your license check out has been successful, the Monitor be updated, accordingly.

Network Licenses Monitor and Commute

Feature	Total	Reserved	Commuted	Commutable	Available	Local License Expiration
CARLSON_CAD_MDD1	2	0	0	2	2	Not commuted
SCAD_2007_CADNET	3	0	0	3	3	Not commuted
SCAD_2007_CIVIL	1	0	0	1	1	Not commuted
SCAD_2007_GEO	1	0	0	1	1	Not commuted
SCAD_2007_HYDRO	1	0	1	0	0	2/24/2018
SCAD_2007_SURVEY	1	0	1	0	0	2/24/2018

You may see which user is currently working with a network license, by clicking on the **View Users** button.



Current Users of License SCAD\_2007\_SURVEY

User	Workstation	Count	Start Time	Commuted	End Time
Hammer PC	Hammer-PC	1	Thu Jan 25 14:08:29...	Yes	Sat Feb 24 23:59:59...