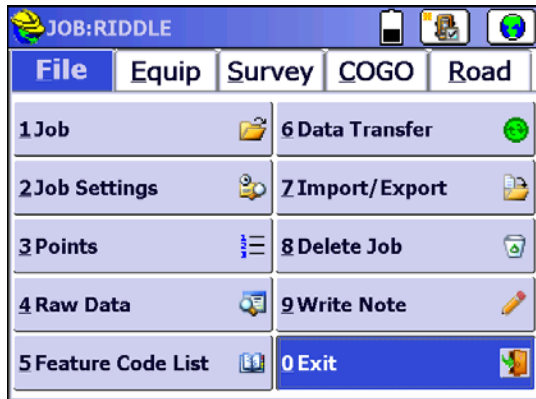


Part 1: Disabling Advanced Network Functionality on the DC

1. Exit SurvCE, by tapping on the File tab. Then, select Exit (menu option #0).



2. Tap Settings.



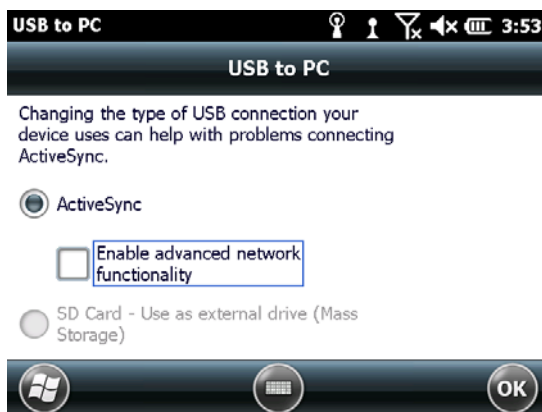
3. Tap Connections.



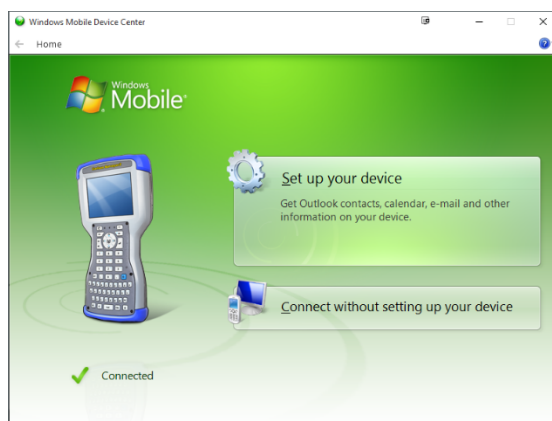
4. Tap USB to PC.



5. UNCHECK the box for Advanced Network Functionality.



You PC should show a message (down by the clock) that it is “loading drivers” for the device. Then, you will be prompted to set up a partnership. Please select, Connect without Setting Up A Partnership.



Part 2: Synchronizing Your Data Collector with Your PC

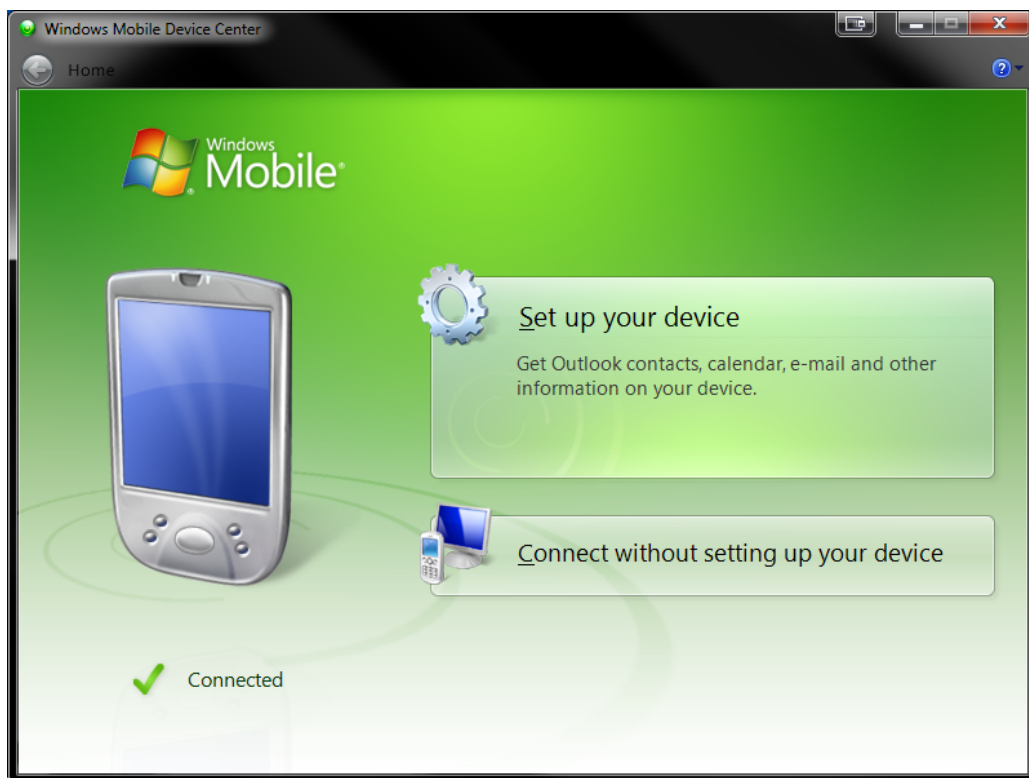
To synchronize a data collector to Windows Vista, Windows 7, or Windows 8, you cannot use Microsoft ActiveSync. You will need to download Windows Mobile Device Center. This program is, essentially, Activesync for the newer versions of Windows.

To find out which the version of Windows your computer is running click on the Start menu, right-click Computer, and select Properties. The version is listed after System Type.

1. Plug in your Data Collector then click the link below to download the Mobile Device Center software and install it.

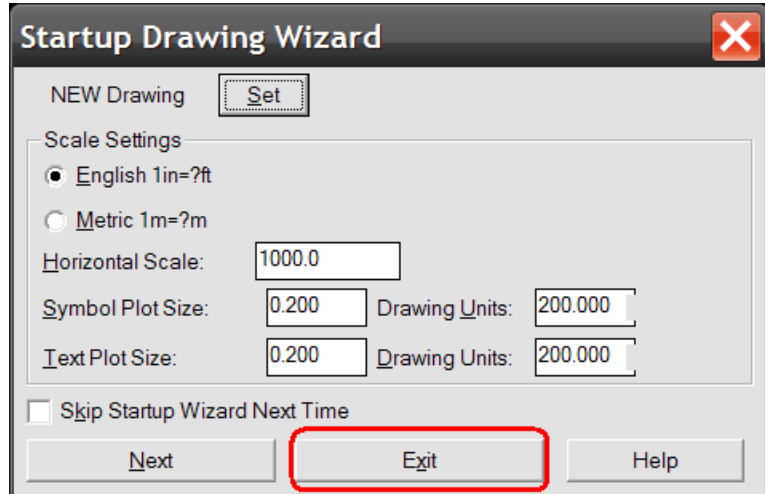
[Windows Mobile Device Center](#)

2. Once your computer has acknowledged the data collector, Windows Mobile Device Center will as if you would like to set up a partnership. Please select "Connect without setting up your device." This will set the connection as a "Guest", and allow you to transfer data.

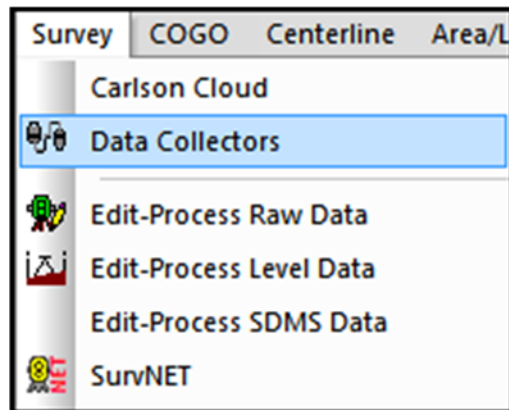


Part 3: Downloading Your Data To Carlson Desktop Software

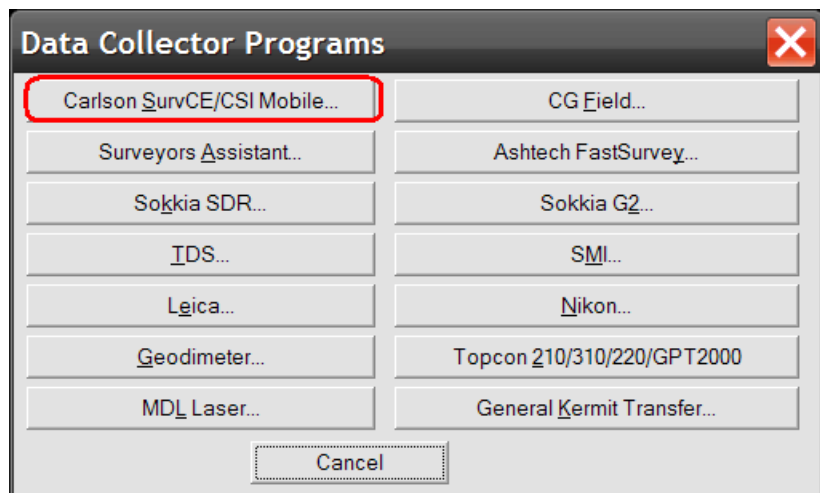
1. Open your Carlson desktop software program, and exit the Startup Drawing Wizard (if it launches).



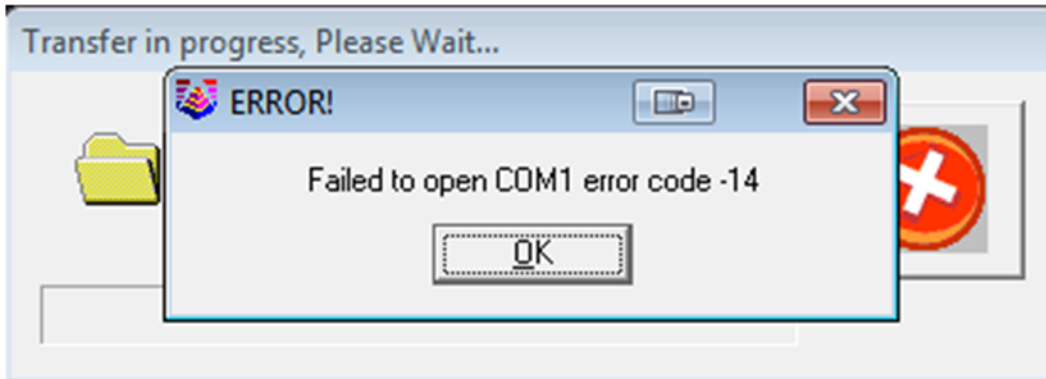
2. Click on the Survey drop-down and select Data Collectors.



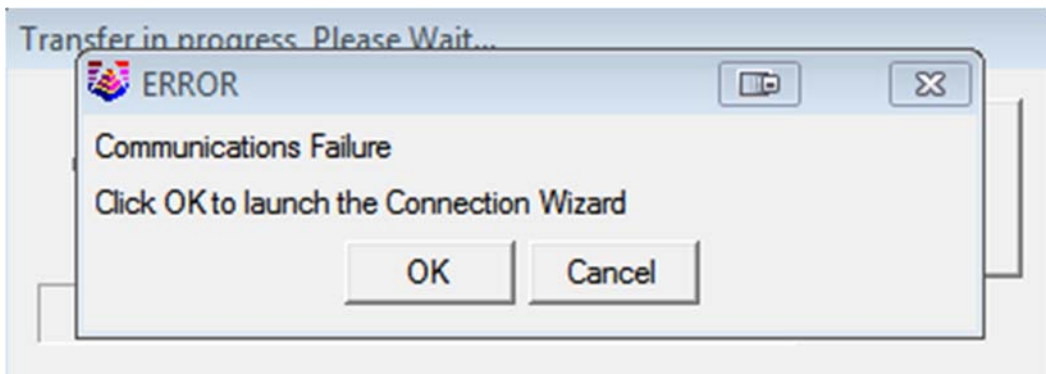
3. Select "Carlson SurvCE/CSI Mobile" as your data collector connection.



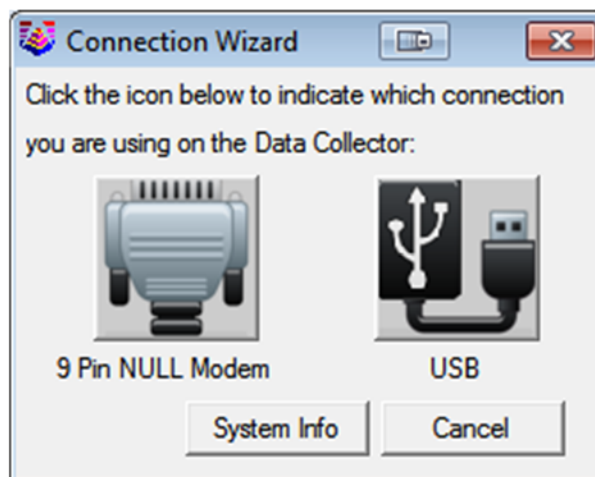
4. You may receive a communication failure message, initially. Click, OK to continue.



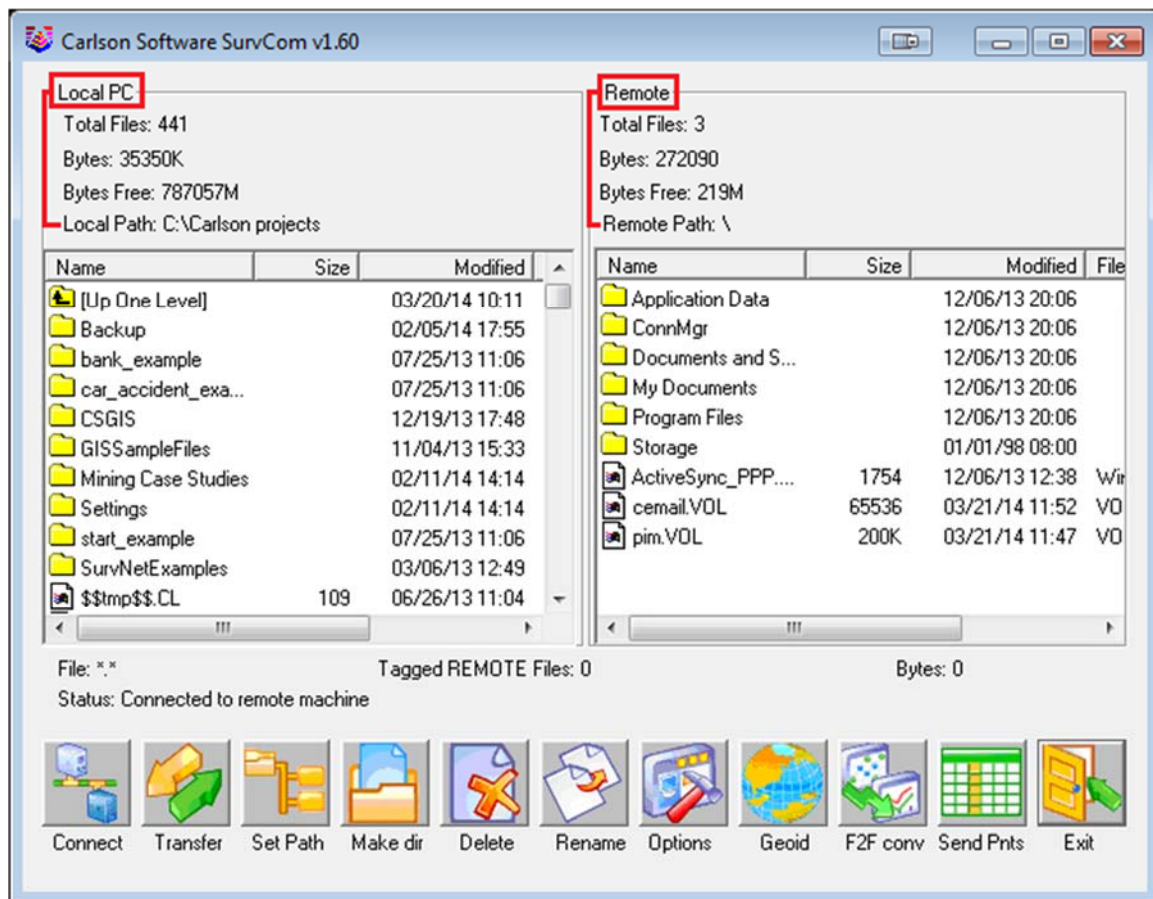
5. You will be prompted to "launch the Connection Wizard." Please, click OK.






6. Click on the USB icon to allow the Connection Wizard to connect to your device.

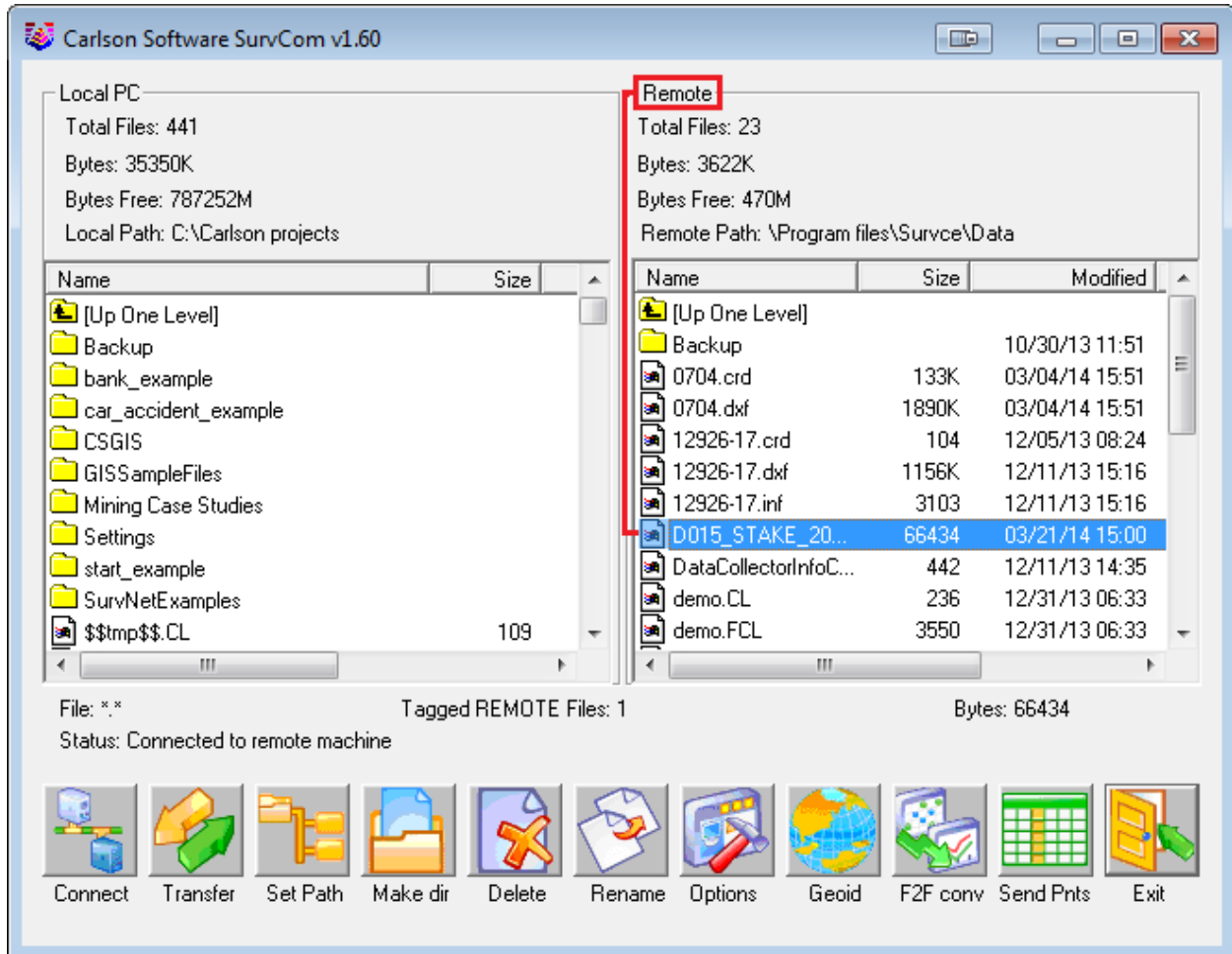


7. The SurvCom window is divided into two panes. Each window pane shows where the program is currently looking at data. This is referred to as the Data Path. The Local Path displays the data on your PC on the left-hand side. The Remote Path displays data in your data collector on the right-hand side. The Remote path should always be set to the DATA folder, of your data collector.

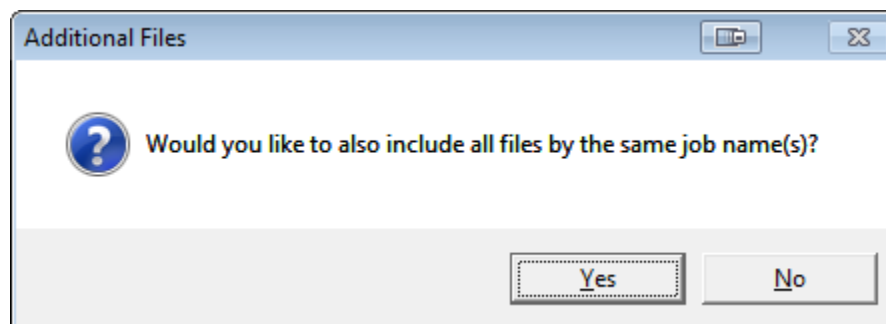


To set the path to the data folder: First, double-click on  Program Files
Then, double-click on  SurvCE
Then, double-click on  Data

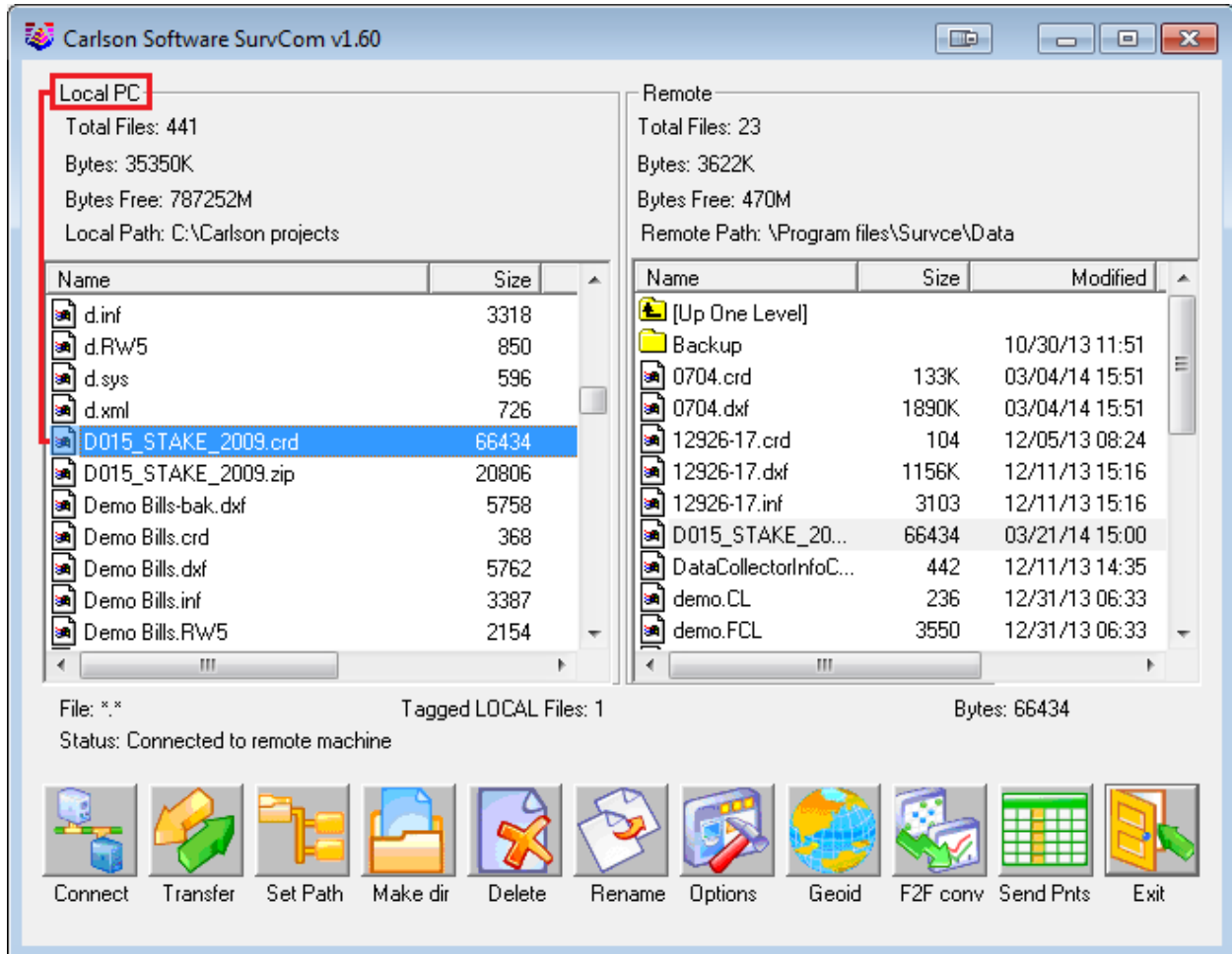
- Browse to the data file, that you wish to transfer. Then, double-click on the file name to transfer the file.



You will be asked if you would like to transfer all files by the same job name. This is advised; so as to keep a backup of your field data, on your PC.

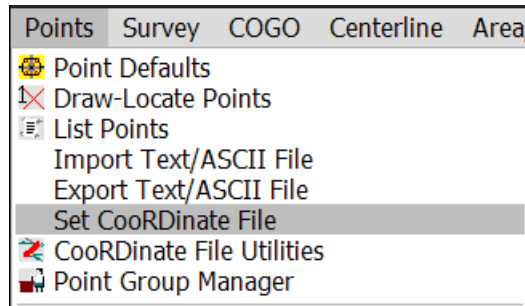


The file(S) will automatically transfer to the path (folder) specified under the heading of Local Path, on the left-hand side.

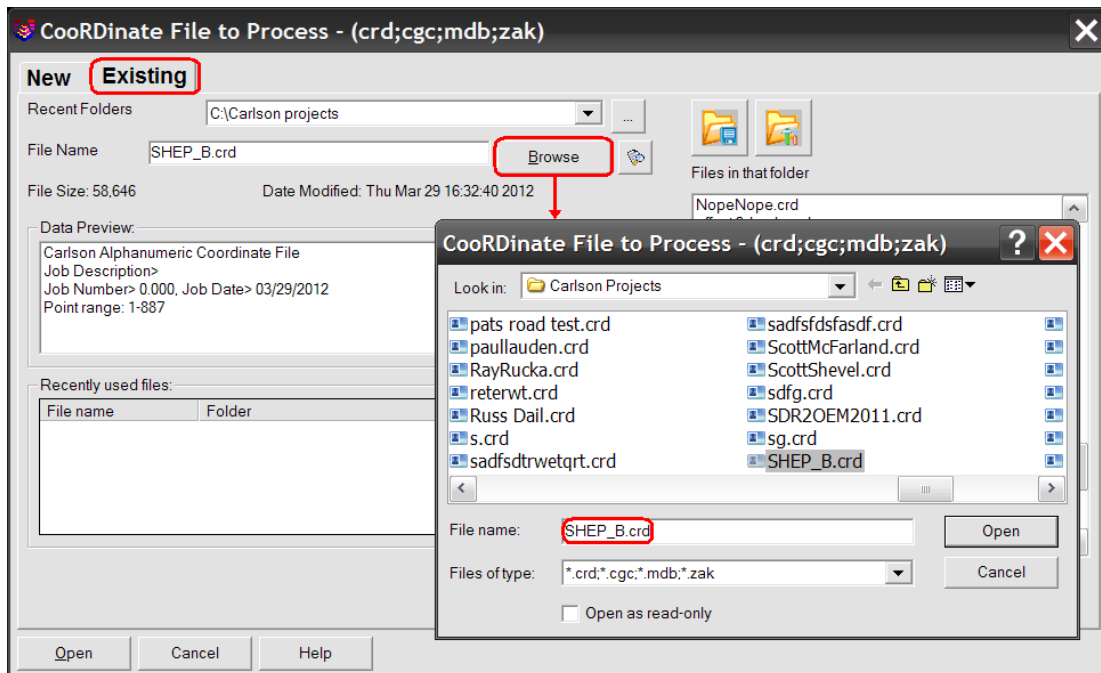


Part 4: Drawing Your Collected Points

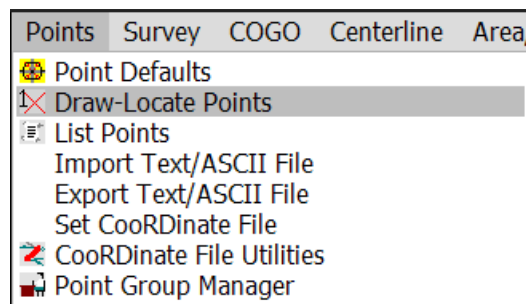
1. First, set your coordinate file as active, by clicking on the Points drop-down and selecting “Set Coordinate File”.



2. Click on the EXISTING tab, browse to your the CRD , and then click Open.



3. To draw the points from coordinate file, on the Points drop-down and select “Draw-Locate Points.” Then, click on the All” button at the middle-bottom of the screen.



click
“Draw