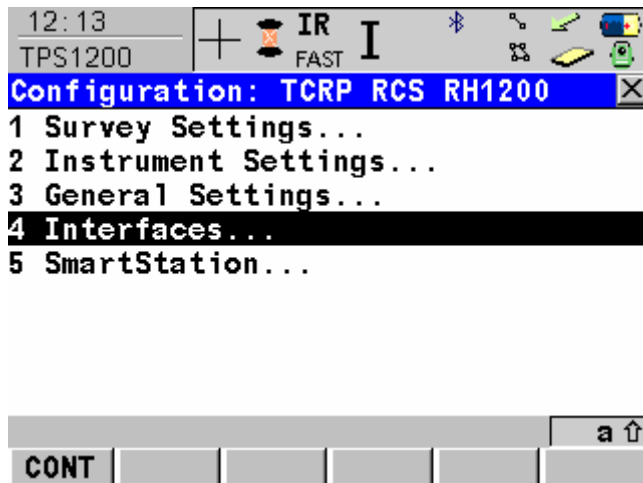


## Configuring the Leica Total Station for Bluetooth

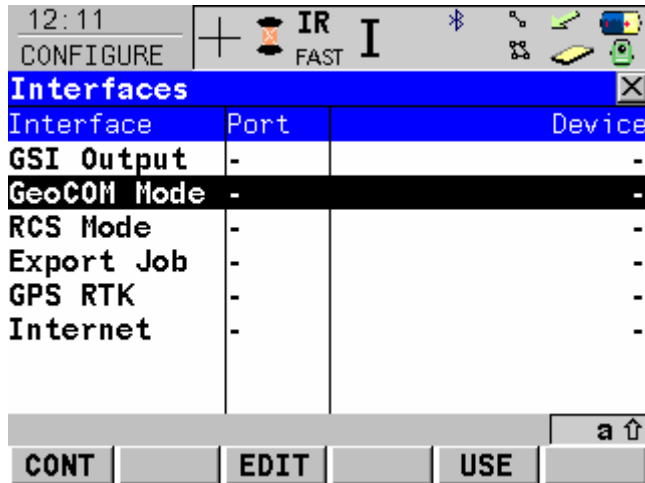
1. On the total station, go to the main menu. This is the screen with six large icons. You may need to press “Esc” a few times to get to it.
2. Choose Config....



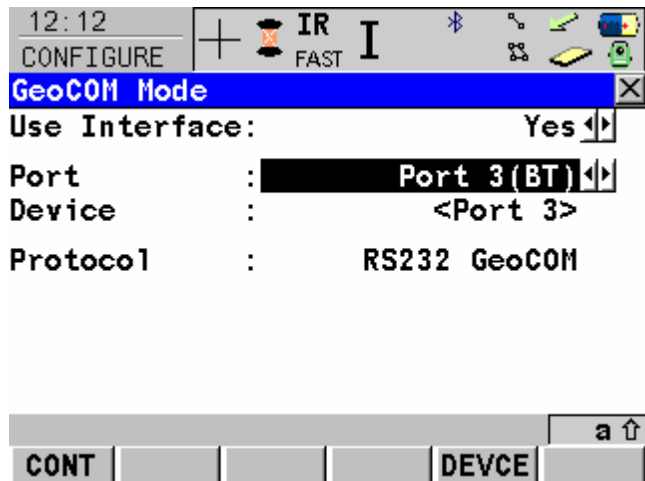
3. Choose Interfaces.



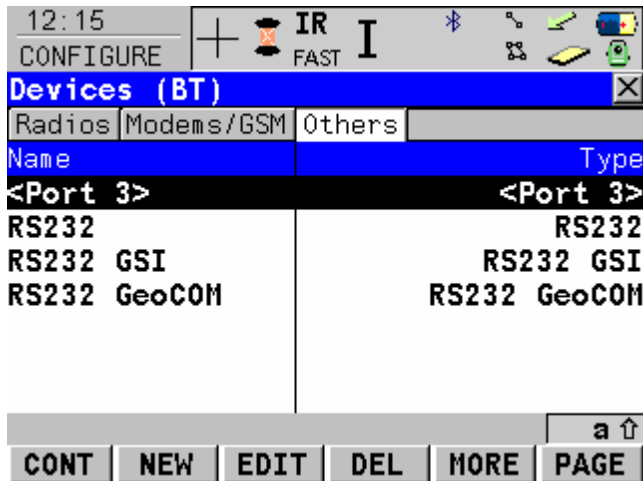
4. Press the down arrow to highlight “GeoCOM Mode”, and then press F3 for Edit.



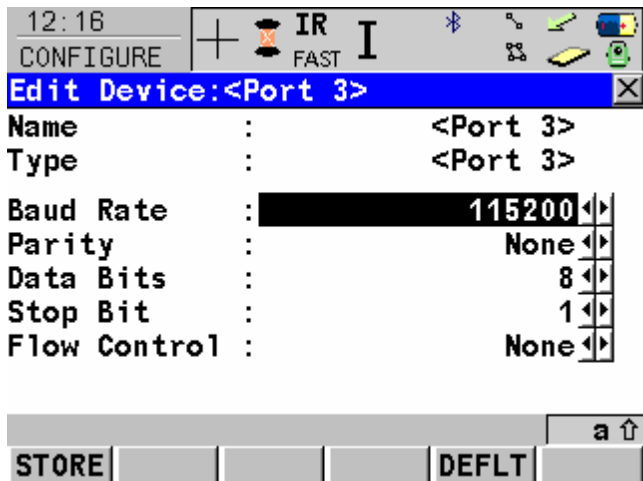
5. From the GeoCOM Mode screen verify that Use Interface is set to Yes. Change the Port setting to Port 3 (BT) . Press F5 for DEVCE.



6. On the Devices screen, select <Port3> from the Others tab.



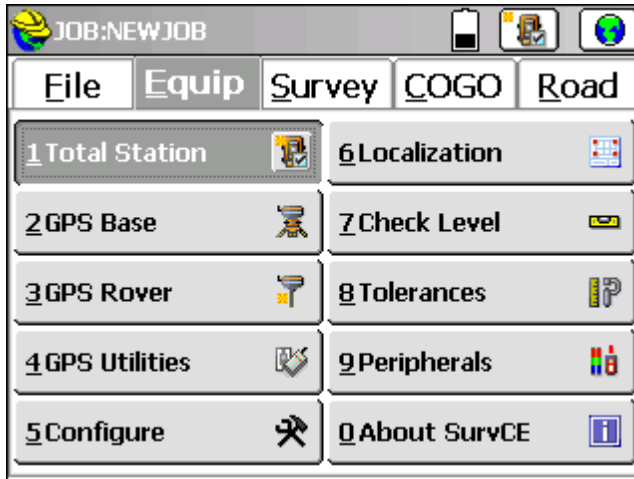
7. Press F3 for edit. Use the arrow keys to set the communication parameters to match the image below.



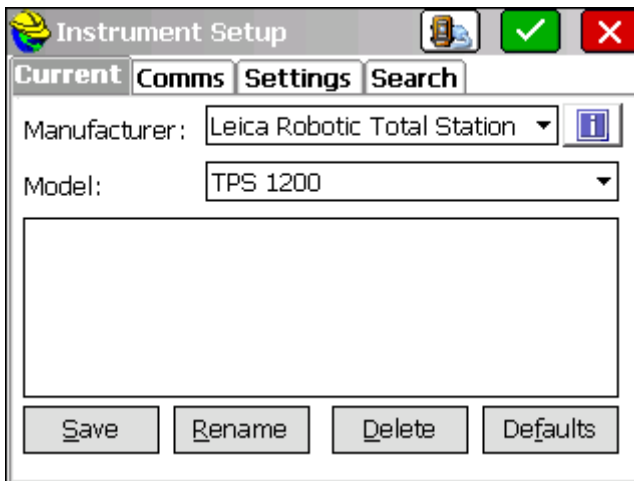
8. Press F1 for store, and then F1 for continue until you are back at the main menu.

## Configuring SurvCE

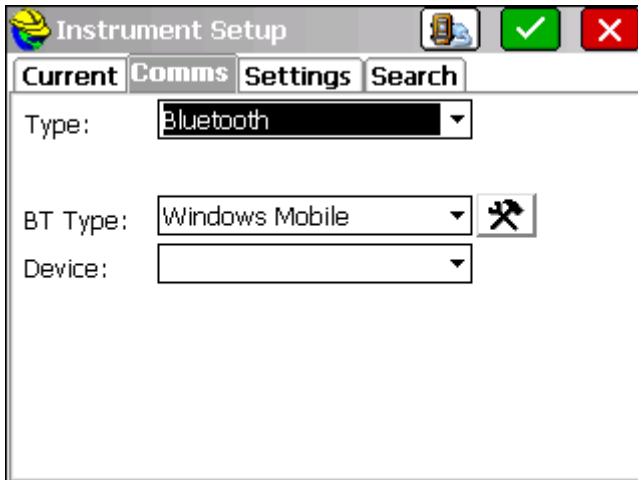
1. From the Main menu, tap the Equip tab then tap “Total Station”.



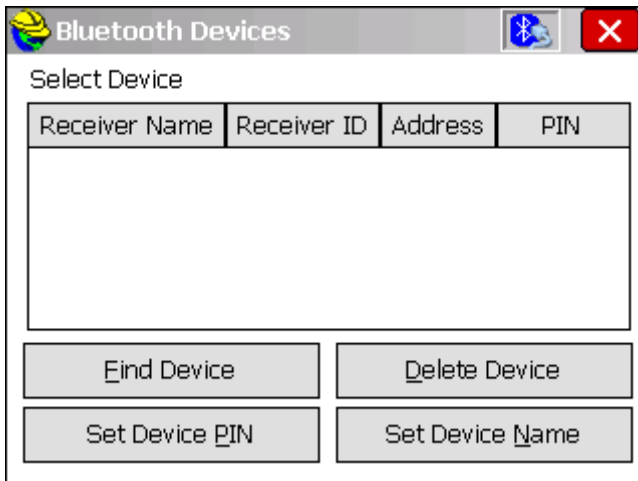
2. On the Current tab, choose Carlson from the Manufacture dropdown list.



3. On the Comms tab, set the Type to Bluetooth and set the BT Type to Windows Mobile. Then, tap on the “Tools” icon, beside Windows Mobile, to access the Bluetooth Manager.



4. Tap Find Device to search for the total station.



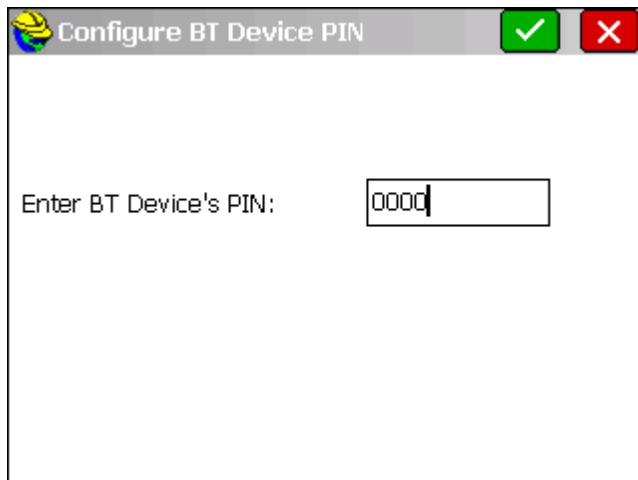
5. Select your Total Station from the list of devices.



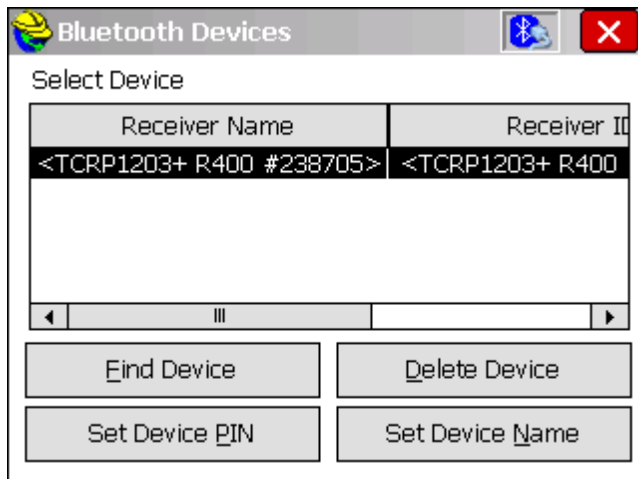
6. When prompted, add your instrument to the list.



7. Tap “Set Device Pin” to enter: 0000



8. Tap on the “Bluetooth Plug” button to bond with the Instrument.



9. Once you have completed all of the information in Instrument Setup, Tap on the “Instrument Plug” icon to confirm that you have communication between the two devices.