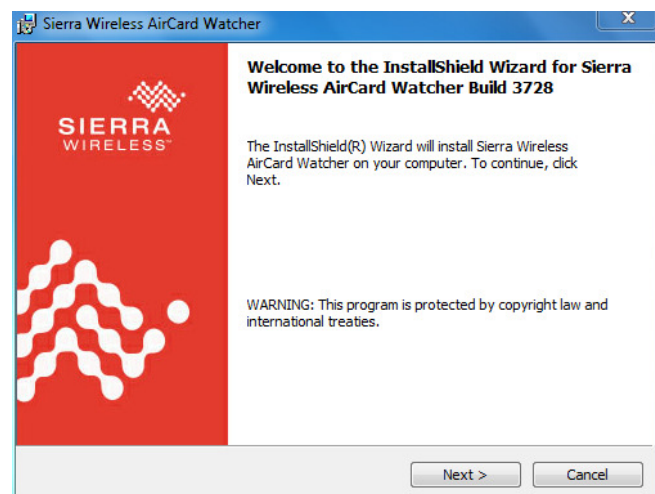


This is in regards to using a Carlson Supervisor tablet with a back case that is all Black in regards to using the Internal Modem to connect to a GSM or CDMA cellphone data network.

Step #1) Tap the “MENU” button on the keypad in the upper right 4 or 5 times and make sure the “WWAN” box is Checked on as shown below:



Step #2) Double-tap the “Aircard Watcher” icon on the desktop and follow the prompts to install Sierra Wireless Aircard Watcher software.



Step #3) If you are using a Sim Chip from a GSM cellphone provider such as AT&T or Tmobile you will need to tap Start / Shut Down to shut down Windows then open the back of the Supervisor and install the Sim Chip. Screw the back cover back on and hold the POWER button to turn it on and load Windows.

If you are using a CDMA cellphone provider such as Verizon you can skip to Step #4

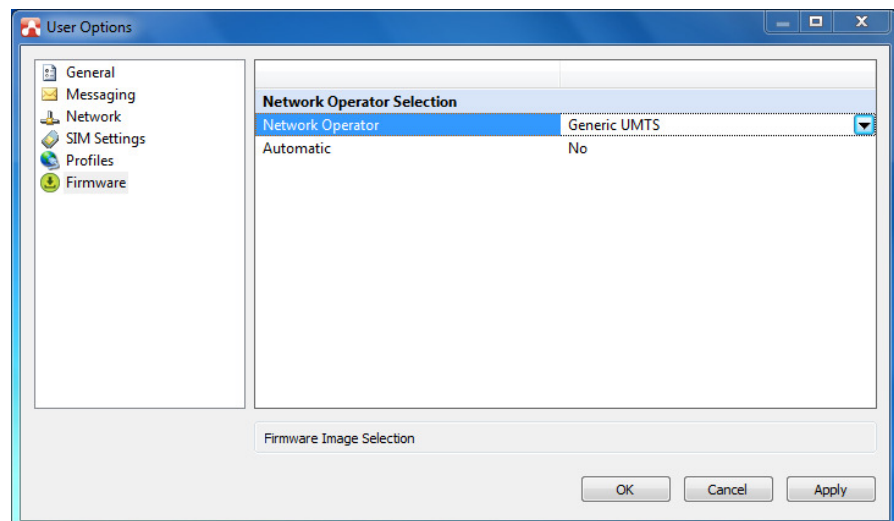
Step #4) Double-tap the “Aircard Watcher” shortcut icon to open up the Sierra Wireless utility



Step #5) Tap the “wrench” icon to open the “User Options” then tap on “Network”

Set the Network Operator to the appropriate Cellphone Provider such as AT&T, Verizon, etc

Then tap “Apply” and tap OK



Step #6) For a GSM account with a Sim Chip you can tap the “Connect” icon in the upper right to connect to the Internet. *If you want to setup a Verizon account please refer to Step #7 below*

The icon will change to “Disconnect” and show a Green status symbol.

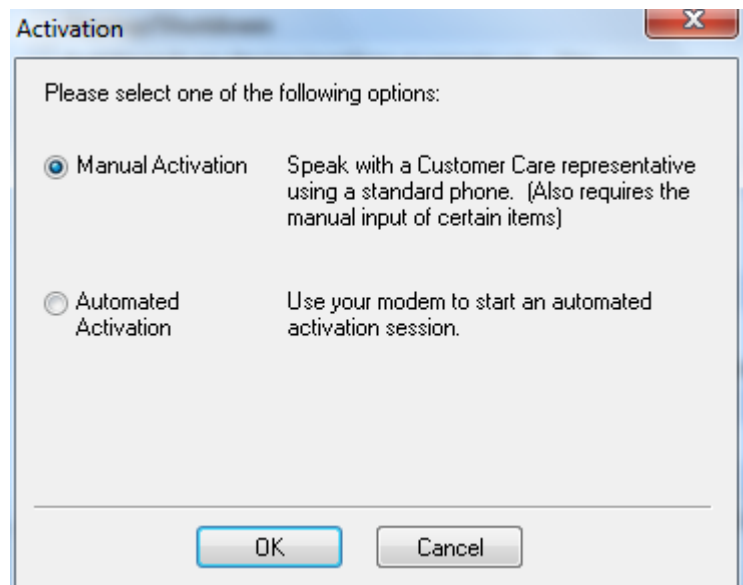
You can tap the “_” minimize button and begin using your Internet Connection.

When your finished using the Internet you can open Aircard Watcher and tap “Disconnect” to close the connection.



Verizon Step #7) For a **Verizon** account you will can select “Manual Activation” and tap OK to display the MEID code then contact Verizon Wireless to activate your account.

After your account is Activated you can refer back to Step #6 to connect to the Internet.



Activation

Please select one of the following options:

Manual Activation Speak with a Customer Care representative using a standard phone. [Also requires the manual input of certain items]

Automated Activation Use your modem to start an automated activation session.

OK Cancel



Activation

When the service representative asks for the Electronic Serial Number (ESN/MEID), please provide the following number.

When the service representative provides you with the activation code, please enter the number below:

Mobile directory number:

OK Cancel