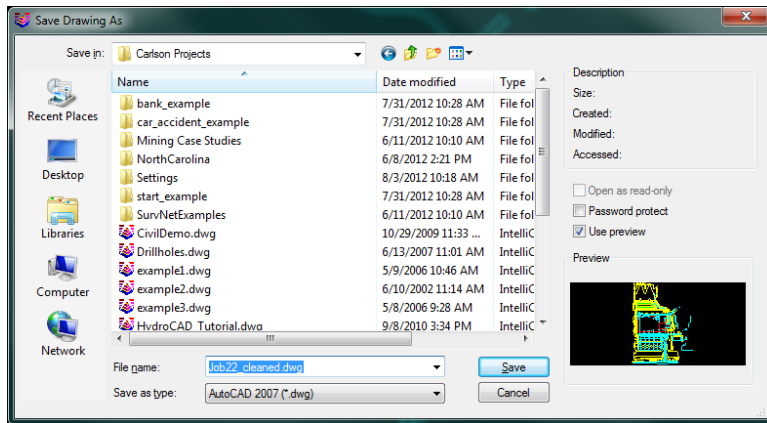


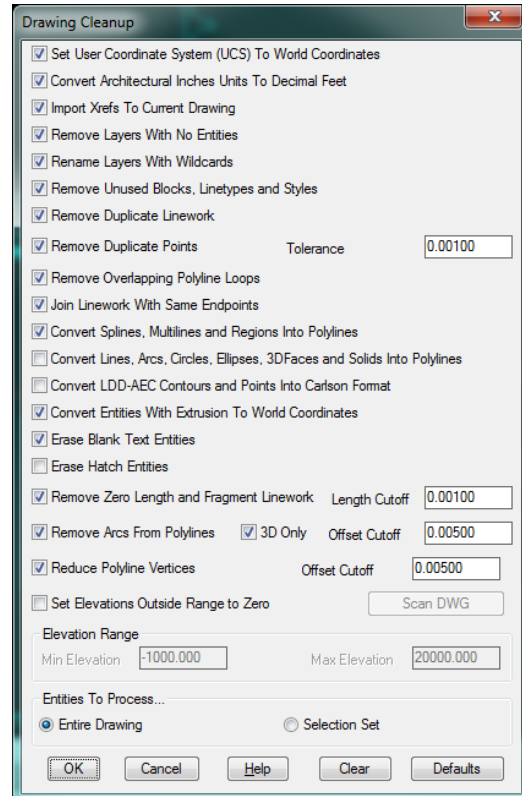
This is in regards to importing linework from a DWG drawing in the office into Carlson SurvCE/PC on a data collector.

1) **Open the the drawing** you want to use in the data collector in Carlson Survey or Carlson Civil office software {or another CAD software like AutoCad, Civil 3D, Land Desktop, etc}.

2) Click **File / Save As** and save it as a new unique DWG name to prevent any changes to the original office copy of the drawing. For example, if the original drawing is Job22.dwg then you can name the new file "Job22\_cleaned.dwg"



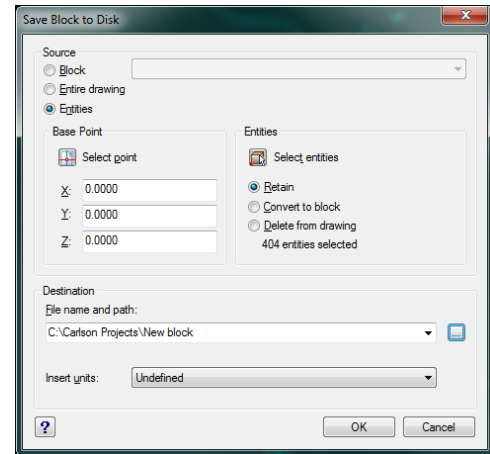
3) Then click **File / Drawing Cleanup** and click OK with all the default settings. You can save the summary report for your records then exit the report.



4) Click **View / Isolate Layer** and left click the layers you want to use in the field. This isolates just the layers you want to use in SurvCE/PC. You can also use View / Freeze Layer by pick to freeze unwanted layers.

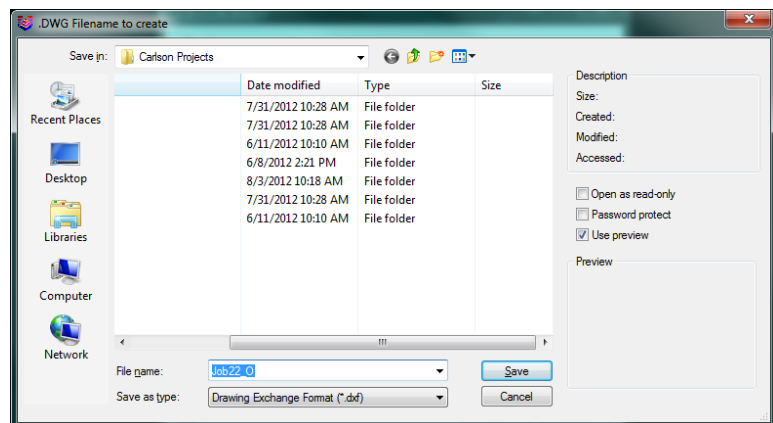
5) After you've isolated just the linework layers you want to use in SurvCE/PC click the Draw pulldown then click "Write Block"

6) Click the "Select Entities" icon then type "ALL" without the quotes and hit ENTER then hit ENTER again to return to the write block options



7) Click the icon with the "..." on the bottom right corner of the screen to the right of the Destination File name and path

8) Click the "Save as Type" pulldown in the bottom middle and change it to "Drawing Exchange Format \*.dxf" or select "AutoCad 2007 DXF \*.dxf"



9) Click in the **File Name box** and change the drawing name to add the letter "O" behind the jobname to signify that it's from the office. For example, if the original DWG drawing is Job22.dwg you would type "Job22\_O" without the quotes in the file name box then click SAVE

10) Now click **OK** to create the new AutoCad 2007 DXF file on your computer

11) **Copy this new DXF file** to your Data folder on your Data Collector where your jobs are stored

12) **Run SurvCE/PC** on the data collector and open job22.crd for example

13) Tap the **Map Icon** in the upper right and go into File / .dxf / **Import .dxf** and select the "job22\_O.dxf" file you copied from the office. Tap the **Green Check** to import the linework and display it in the map.