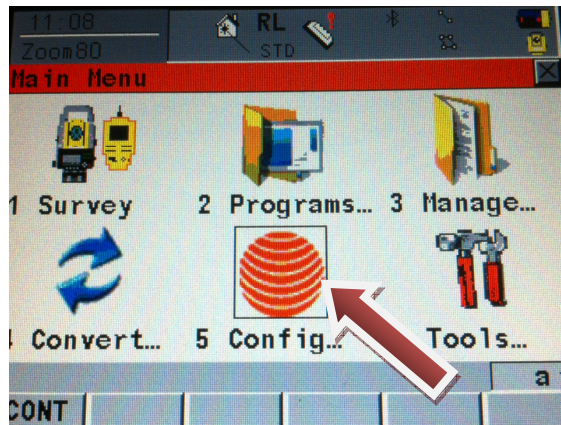


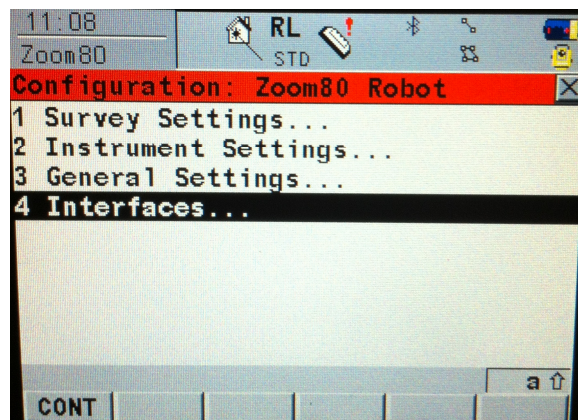
## Carlson Robot – CR 2 & CR5

Checking the Link Number on Carlson Robot and how to change it

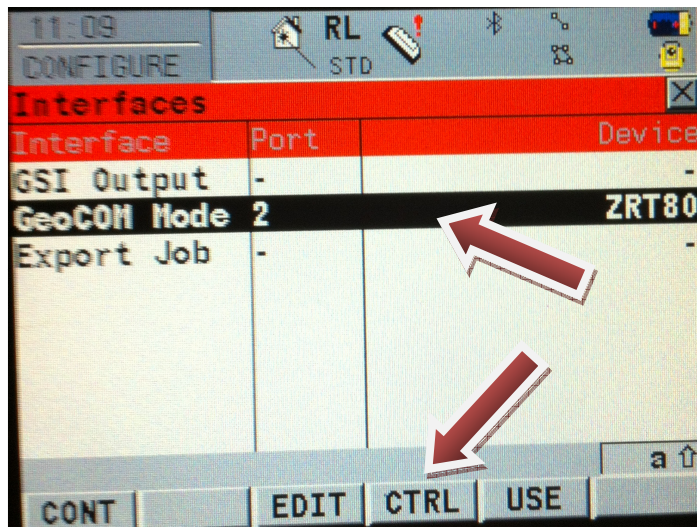
On the main screen, select #5 – Configure option



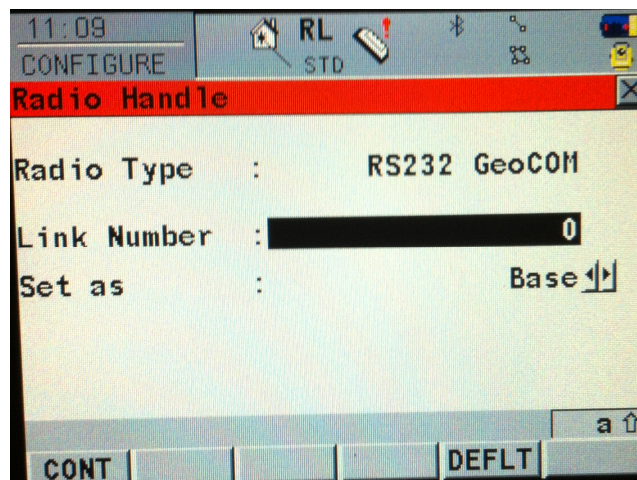
In the configuration screen, select #4 – Interfaces



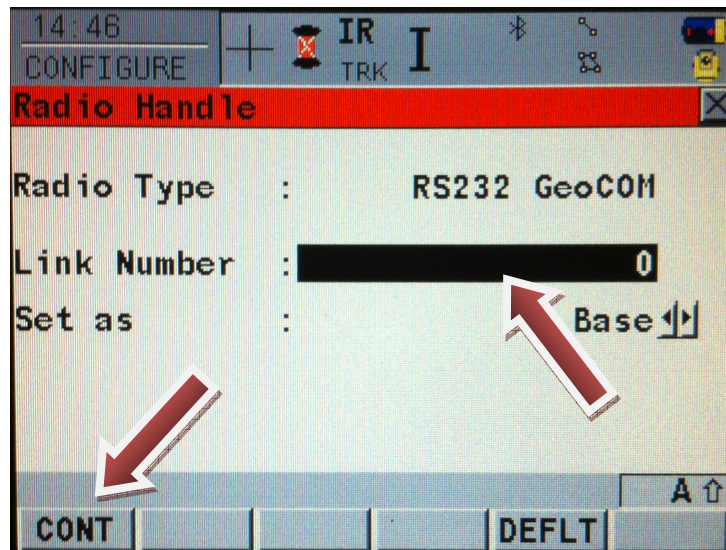
Highlight the GeoCOM Mode with a port assigned to the instrument and select the “CTRL” button at the bottom



The next screen will show you the “Link Number” between the Robot and the Data Controller (which need to match).



To change this link number, all you have to do is make sure the “Link Number” is highlighted and click on a number between 0 – 7 on the keypad.



Next click on the ‘CONT’ button at the bottom and you should see a message flash across the bottom saying it has been changed. Now you can click the ‘esc’ button to get back to the main page.