

## **Part 1: Connecting your Data Collector to your PC**

To synchronize a data collector to Windows Vista, Windows 7, or Windows 8, you cannot use Microsoft ActiveSync. You will need to download Windows Mobile Device Center. This program is, essentially, ActiveSync for the newer versions of Windows.

To find out which the version of Windows your computer is running click on the Start menu, right-click Computer, and select Properties. The version is listed after System Type.

1. Plug in your Data Collector then click the link below to download the Mobile Device Center software and install it.

### [Windows Mobile Device Center](#)

2. Once your computer has acknowledged the data collector, Windows Mobile Device Center will ask you if you would like to set up a partnership. Please select “Connect without setting up your device.” This will set the connection as a “Guest”, and allow you to transfer data.



## **Part 2: Copying Your Manual to Your Data Collector**

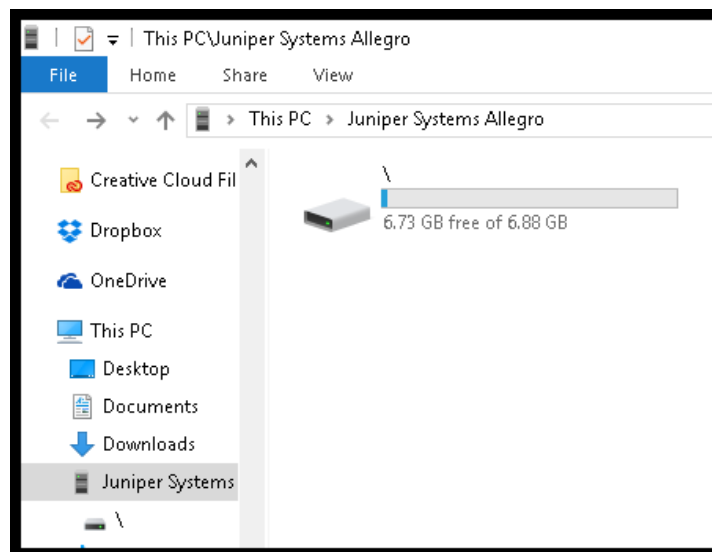
Now, that you have connected your data collector to your PC, you may copy the SurvCE manual to the data collector.

Locate the Carlson SurvCE manual, which you have saved to your PC. Right-click on the file and select **COPY**. **DO NOT EVER SELECT CUT**, because you may lose your data.

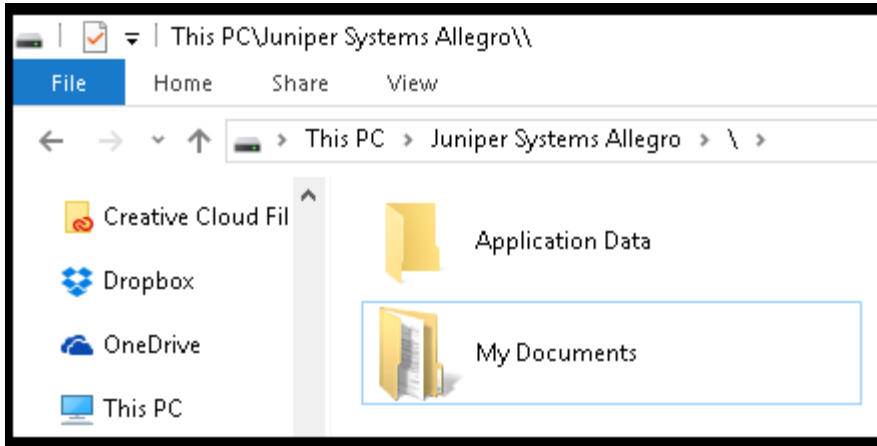
1. Go back to Windows Mobile Device Center. Click on **File Management**, then **“Browse the contents of your device.”**



2. Double-click on “/” folder.



3. Then, double-click on the **My Documents** folder.

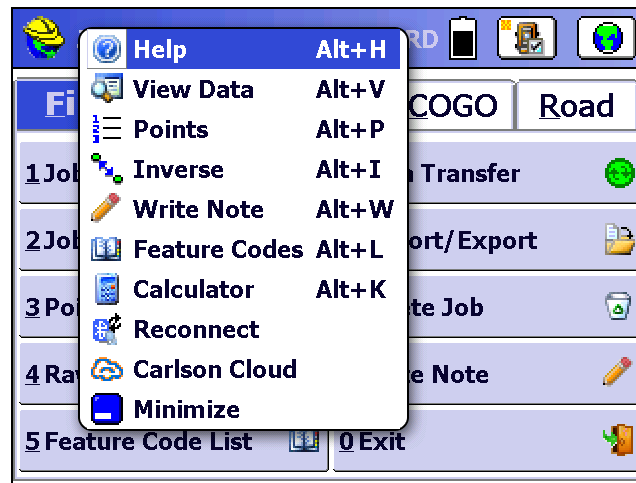


5. Right-click on an empty space on the screen. Then, select **PASTE**.

You have now, successfully transferred a file from your desktop computer to your data collector.

### **Part 3: Accessing the SurvCE Manual On Your Data Collector**

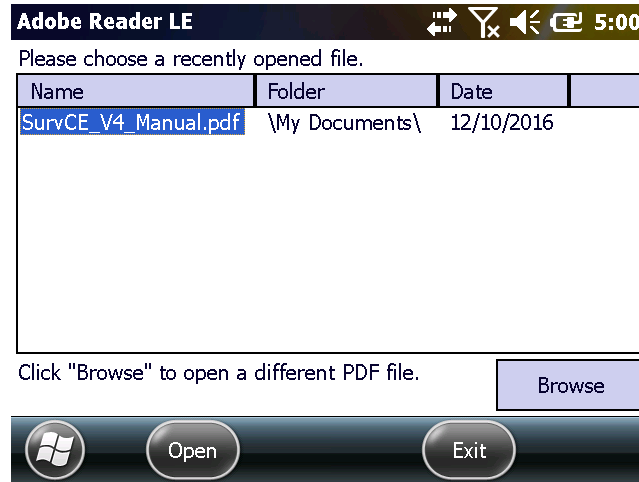
1. In order to view the SurvCE manual, you will need to minimize the SurvCE program. This is done by tapping on the “hardhat” icon on the upper left-hand side of the SurvCE program. Then, tapping on Minimize.



2. Once on the main screen of the data collector, Tap on the Windows icon on the bottom left-hand corner of the screen, to access the Windows Start menu.
3. Browse to, and select, the Adobe Reader program.



4. The Adobe Reader program will allow you to select your SurvCE Manual.pdf. Highlight it. Then, Tap Open.



The manual may appear smaller than you might like. However, you can adjust the size of the manual through the use of buttons at the bottom of the screen.

